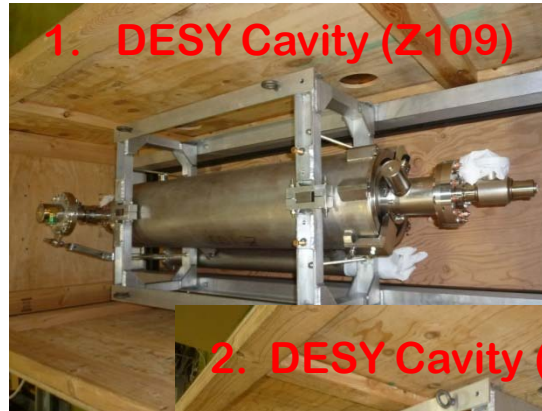

Status of STF-QB Cryomodule

Shipping S1-G cavities to DESY and FNAL

Transportation Boxes to DESY/FNAL

Flight in Jan. 24th, 2012



1. DESY Cavity (Z109)



2. DESY Cavity (Z108)



1. FNAL Cavity (ACC011)



2. FNAL Cavity (AES004)



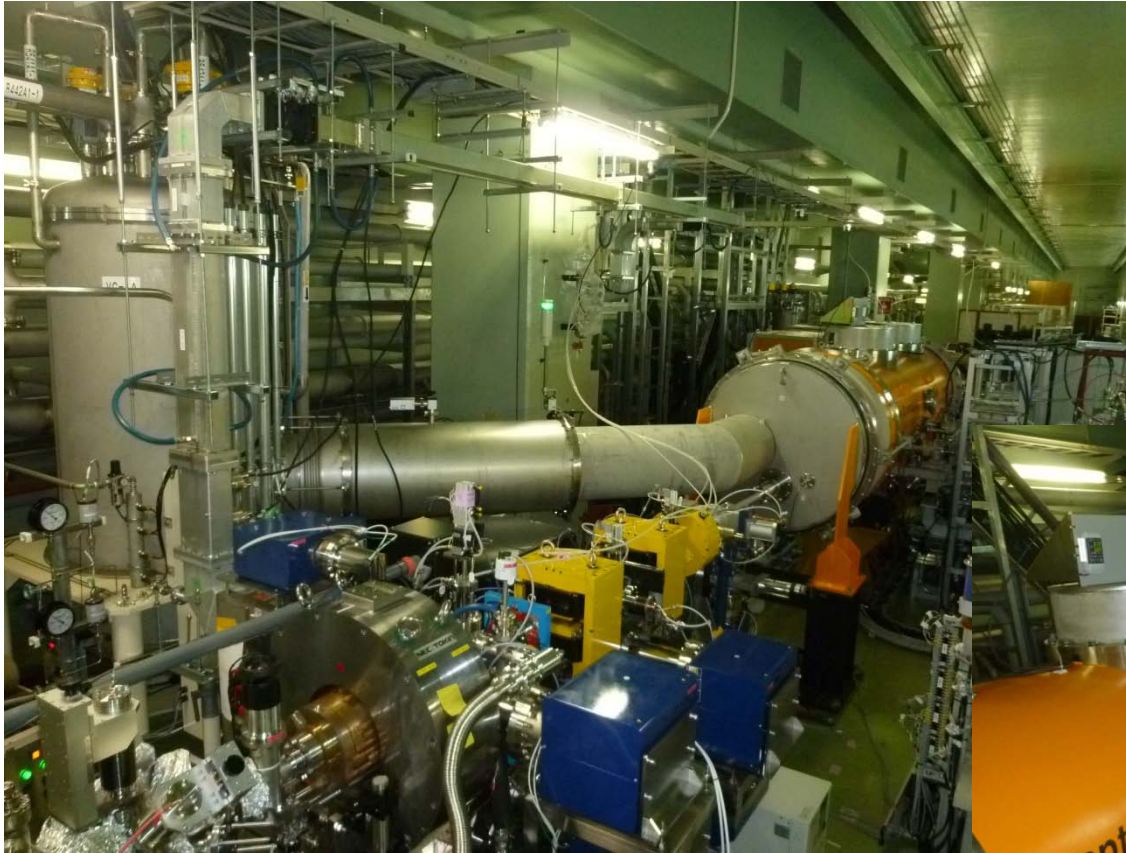
3. FNAL Parts Box



3. DESY Parts Box

“ Did you (Axel & Tug) receive these boxes ? “

Status of QB Cryomodule in STF tunnel (1)



February 25th, 2012

Cool-down of the cryomodule
was started in February 20th, 2012.



Status of QB Cryomodule in STF tunnel (2)



February 25th, 2012



Two 9-cell cavities, MHI-12 and MHI-13,
are
driven by a 800 kW pulsed klystron.

Status of STF-QB Cryomodule

January, 2012

SUN	MON	TUE	WED	THU	FRI	SAT
1	2	3	4	5	6	7
8	9	10	11	12	13	14
15	16	17	18	19	20	21
		Preparation (High power RF Source)				
22	23	24	25	26	27	28
		Preparation (High power RF Source)				
29	30	31				
		Coupler processing at RT				

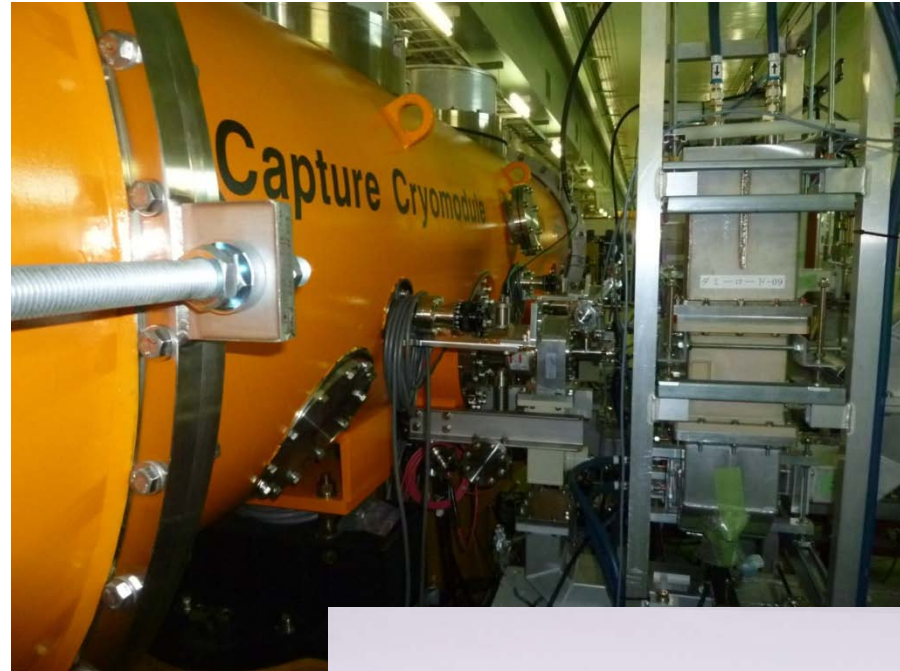
February, 2012

TUE	WED	THU	FRI	SAT
	1	2	3	4
5	6	7	8 HPG check	9 Coupler processing at RT
10	11	12	13	14
		Coupler processing at RT		
15	16	17	18	19
20 Cool-down Start	21	22	23	24
25	26	27	28	29
				cool-down to 2 K

Today, two cavities reached to superconducting state.



RF Processing of Input couplers at RT (1)



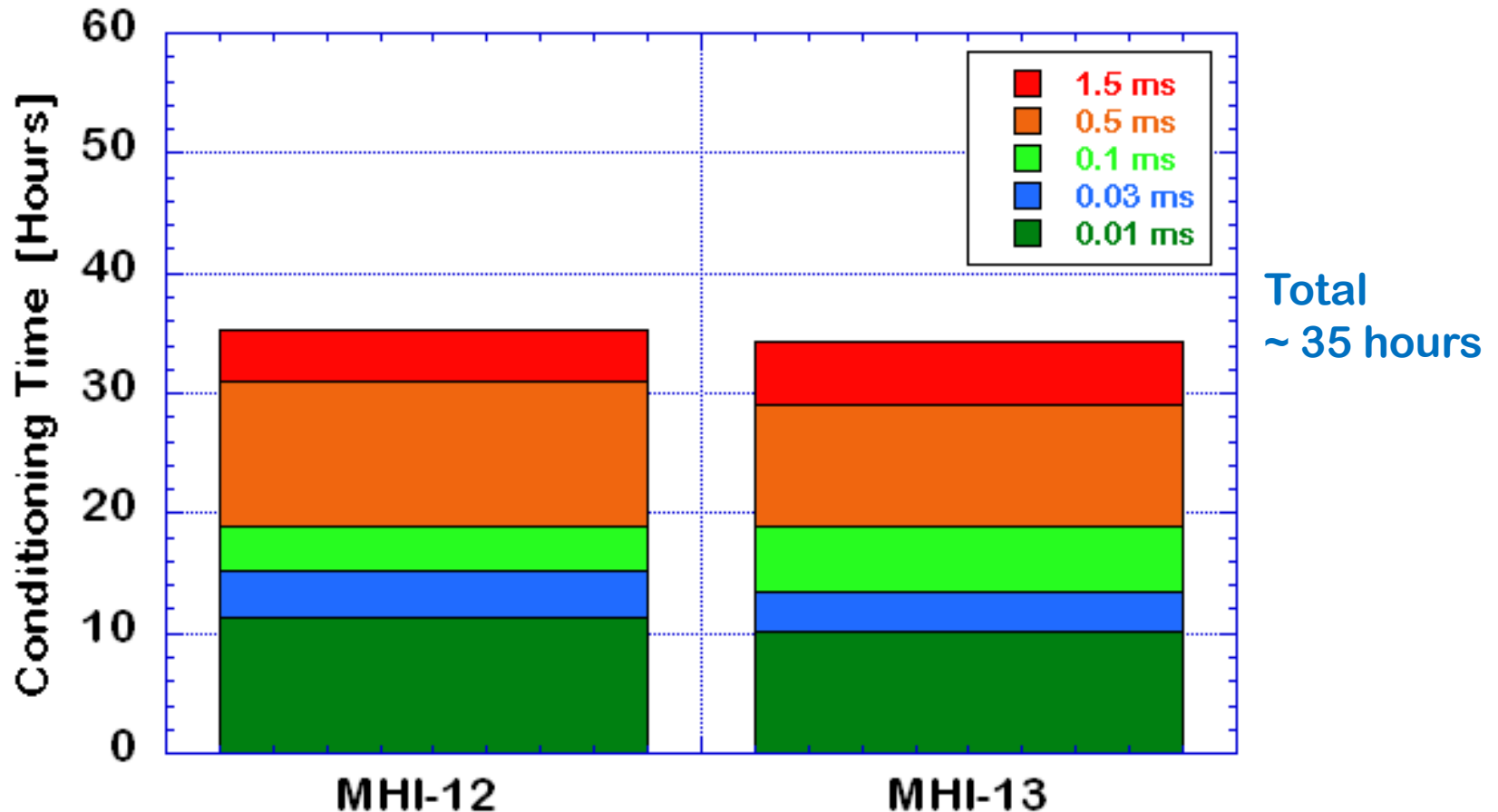
February 25th, 2012

Two STF-2 input couplers were installed in the QB cryomodule.

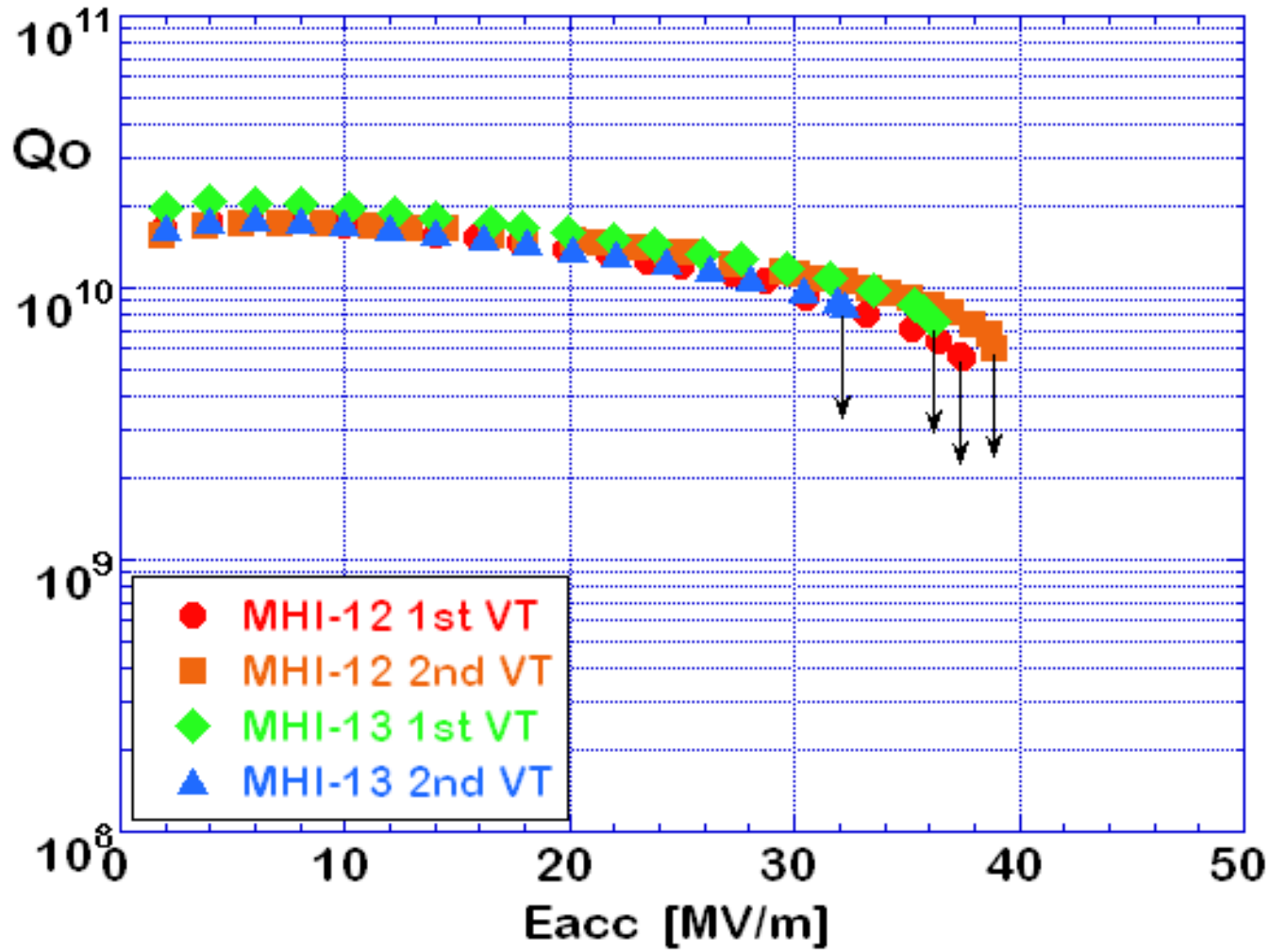


RF Processing of Input couplers at RT (2)

Conditioning : 10 μ s, 30 μ s, 100 μ s, 500 μ s \rightarrow Prf = 400 kW
1.5 ms \rightarrow Prf = 260 kW



VT Results of MHI-12 and MHI-13



Schedule of QB Cryomodule Tests

March, 2012

SUN	MON	TUE	WED	THU	FRI	SAT
				1	2	3
4	5	6 Low power RF measurements at 2 K (tuner stroke, piezo stroke, QL stroke, Qext)	7	8	9	10
11	12	13 Low power RF measurements at 2 K (Qhom, piezo response, vibration modes)	14	15	16	17
18	19	20	21	22 MHI-12 High Power Process	23	24
25	26	27 MHI-13 High Power Process	28	29 MHI-12, Piezo Dynamic loss	30	31

April, 2012

TUE	WED	THU	FRI	SAT
3 MHI-13, Piezo Dynamic loss	4	5 MHI-(12+13)/LLRF Dynamic Loss	6	7
8	9	10 G.V. open	11	12
15	16	17	18	19
22	23	24	25	26
29	30 G.W. Holidays			

beam operation

beam operation

beam operation

Low power RF tests for 2 weeks,
High power RF tests for 2.5 weeks.

Thank you for your attentions !!