

# ILC-CFS activities in Tohoku University

Tomo SANUKI

# 東北大学ILC推進会議

The Tohoku University Council for the Promotion of the ILC

[Home](#)[News](#)[About the Council](#)[Members](#)[Subcommittee](#)[Meetings](#)[Activities](#)[Links](#)[Contact](#)

## The Tohoku University Council for the Promotion of the ILC

The Tohoku University Council for the Promotion of the ILC is promoting the International Linear Collider to one of the candidate sites **Kitakami Mountain** ranging from Miyagi through Iwate to Aomori prefectures in Tohoku district.

### LANGUAGE

- 日本語
- English

### RECENT POSTS

- [Tohoku University Science Cafe Special "Higgs boson and Evening for Tea Ceremony"](#)
- [Announcement of the public lecture on Higgs and the ILC](#)
- [Establishment of the Tohoku University Council for the Promotion of the ILC](#)

# Members

---

◎Sadayoshi Itoh	Trustee (Research, Environmental Safety)
Hiroshi Kazui	Trustee (Partnership between Industry and Academia)
Nobuyoshi Hara	Trustee (Earthquake Disaster Reconstruction)
Toshio Miyata	Special-Assistant to the President (Research)
Motoko Kotani	Special-Assistant to the President (Research) , Director of the WPI-AIMR
Seiichi Ohtaki	Dean, Faculty of Economics
Yushi Fukumura	Dean, Faculty of Science
Hiroshi Kanei	Dean, Faculty of Technology
Mitsuo Niinomi	Director of the IMR
Junichi Kawamura	Director of the IMRAM
Hajime Shimizu	Director of the RCEPS
Satoshi Masuda	Professor, Faculty of Economics
Hitoshi Yamamoto	Professor, Faculty of Science
Takashi Kyotani	Professor, Faculty of Technology

---

+ Subcommittee/  
WG members

# The Tohoku University Council for the Promotion of the ILC

Committee for Site Studies/  
Tohoku Grand Design

Urban Design WG

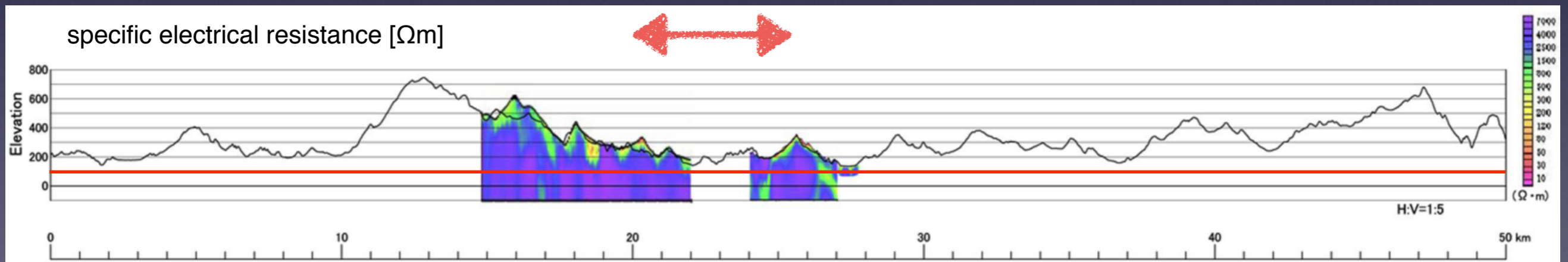
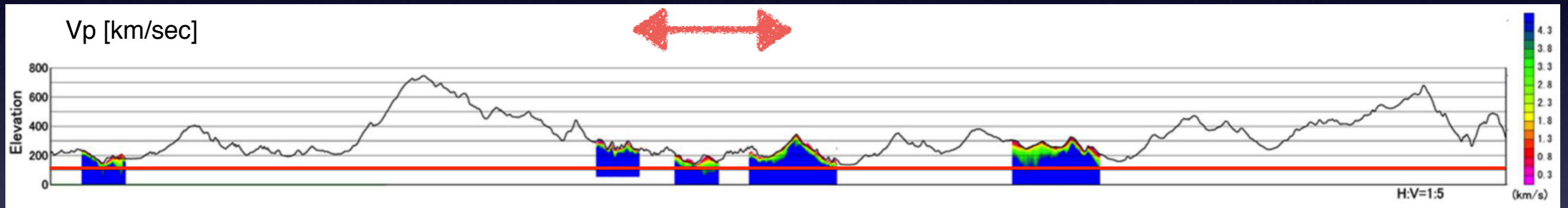
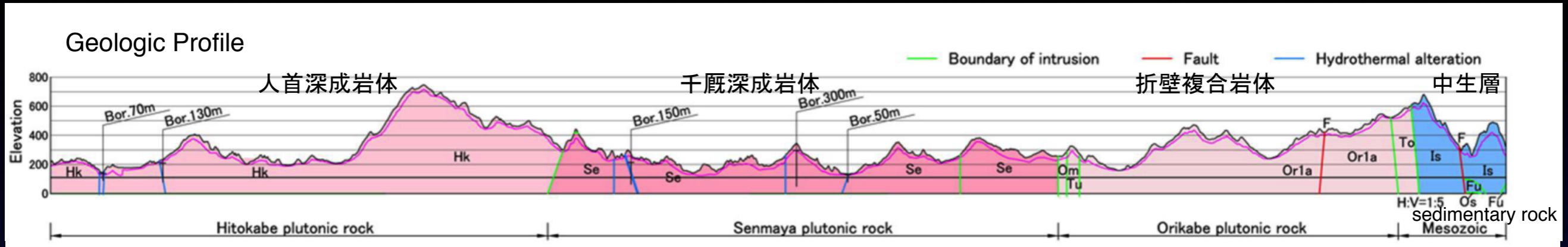
Transportation  
WG

Committee for Conferences,  
Public Lectures, Science Cafes

# Geological Survey

North

South

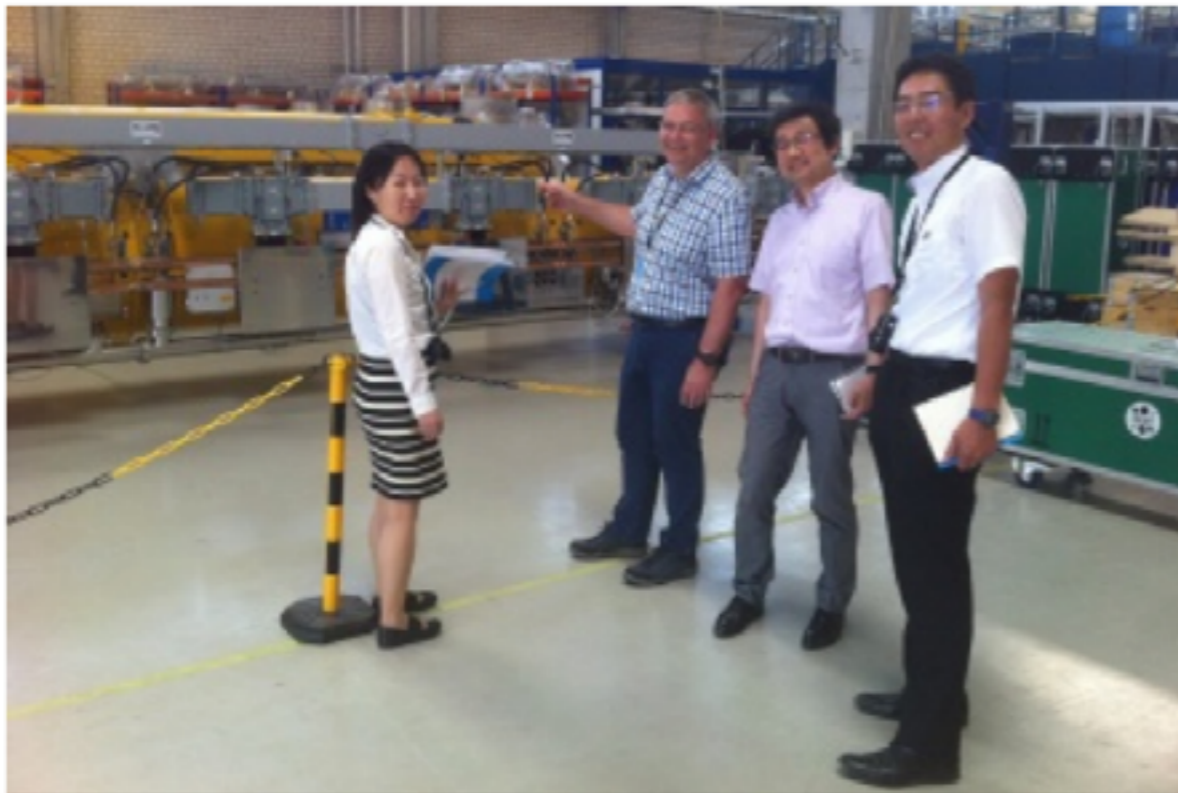


➔ more detailed survey

## FEATURE

### Learn from the experience of others – Tohoku University campus planning group visits DESY

by Ricarda Laasch



DESY welcomed the group of three who are studying the size and needs of a possible ILC campus in Tohoku.

## DIRECTOR'S CORNER

### Two Linear Collider events in Whistler, Canada this autumn

by Steinar Stapnes

**LCWS2015** | International Workshop on Future Linear Colliders

The workshop will be devoted to the study of the physics cases for future high energy linear electron positron colliders, taking into account the recent results from LHC, and to review the progress in the detector and accelerator design for both the ILC and CLIC projects.

1. Introduction	11. Physics of the ILC	21. Summary and Outlook
2. The Linear Collider	12. Physics of the CLIC	22. Summary and Outlook
3. The ILC/CLIC Accelerator	13. Physics of the ILC/CLIC	23. Summary and Outlook
4. The ILC/CLIC Detector	14. Physics of the ILC/CLIC	24. Summary and Outlook
5. The ILC/CLIC Physics	15. Physics of the ILC/CLIC	25. Summary and Outlook
6. The ILC/CLIC Technology	16. Physics of the ILC/CLIC	26. Summary and Outlook
7. The ILC/CLIC Construction	17. Physics of the ILC/CLIC	27. Summary and Outlook
8. The ILC/CLIC Operation	18. Physics of the ILC/CLIC	28. Summary and Outlook
9. The ILC/CLIC Maintenance	19. Physics of the ILC/CLIC	29. Summary and Outlook
10. The ILC/CLIC Safety	20. Physics of the ILC/CLIC	30. Summary and Outlook

**TRIUMF**

**November 2-6, 2015**  
Whistler BC Canada  
[lcws15.triumf.ca](http://lcws15.triumf.ca) | [lcws15@triumf.ca](mailto:lcws15@triumf.ca)

As the summer conferences are kicking off, providing more and more complete LHC 8 TeV results and the very first glimpses of 13 TeV data, it is also time to start thinking about the autumn linear collider programme. The LCWS15 and the International Linear Collider School will be held in Whistler, BC, Canada.