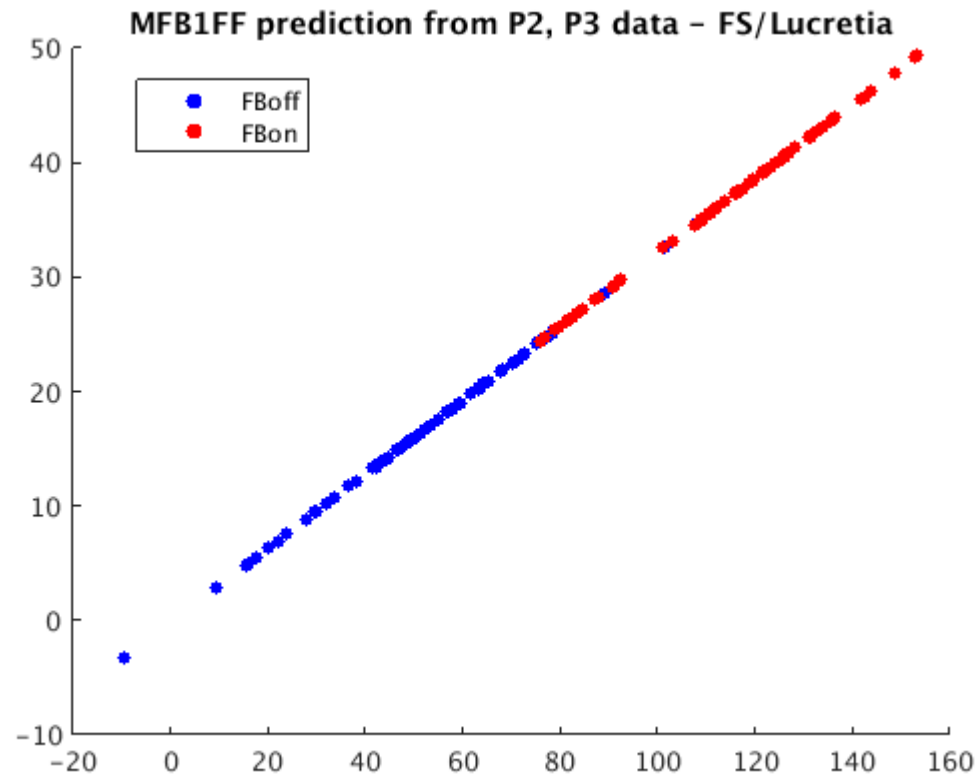
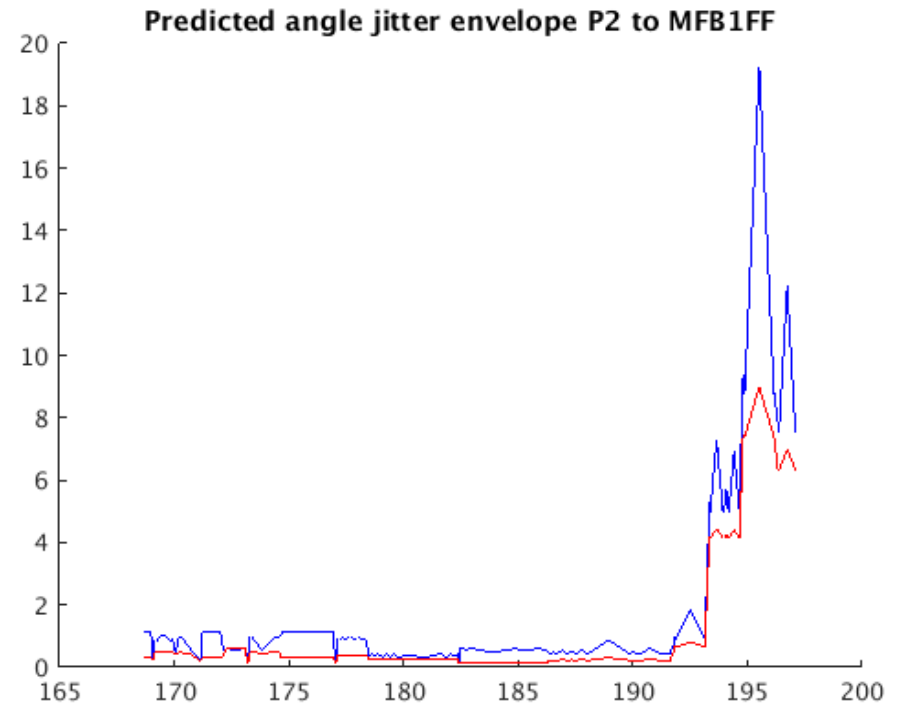
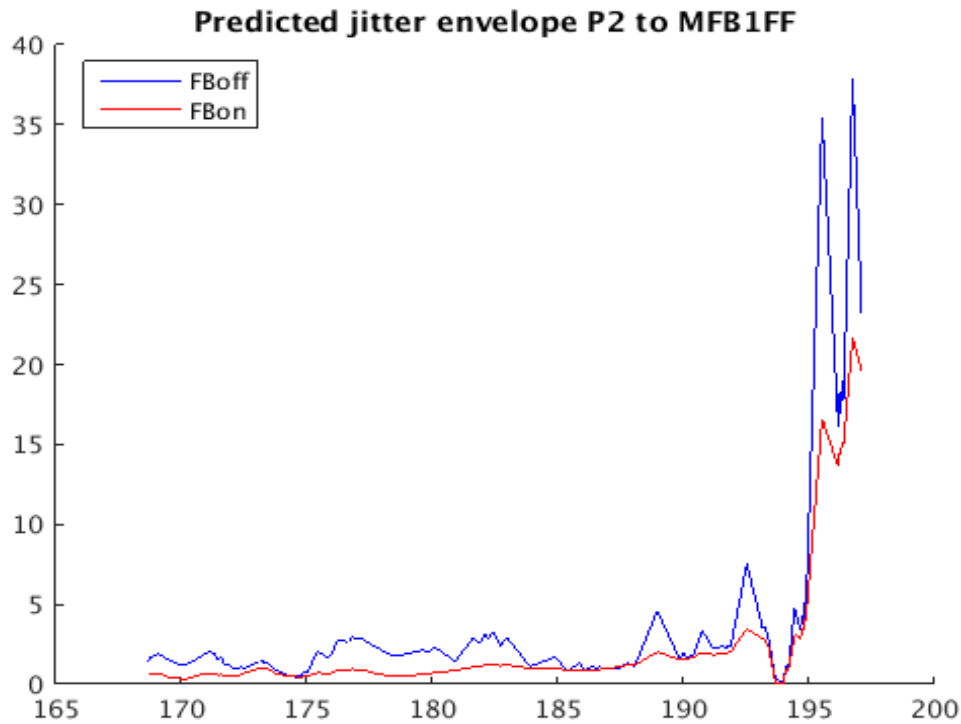


Further MFB1FF studies

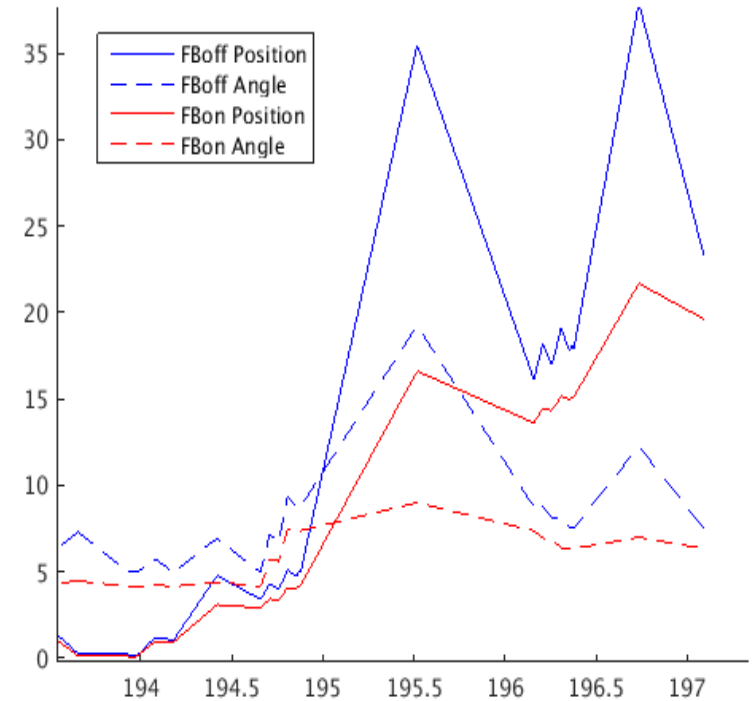
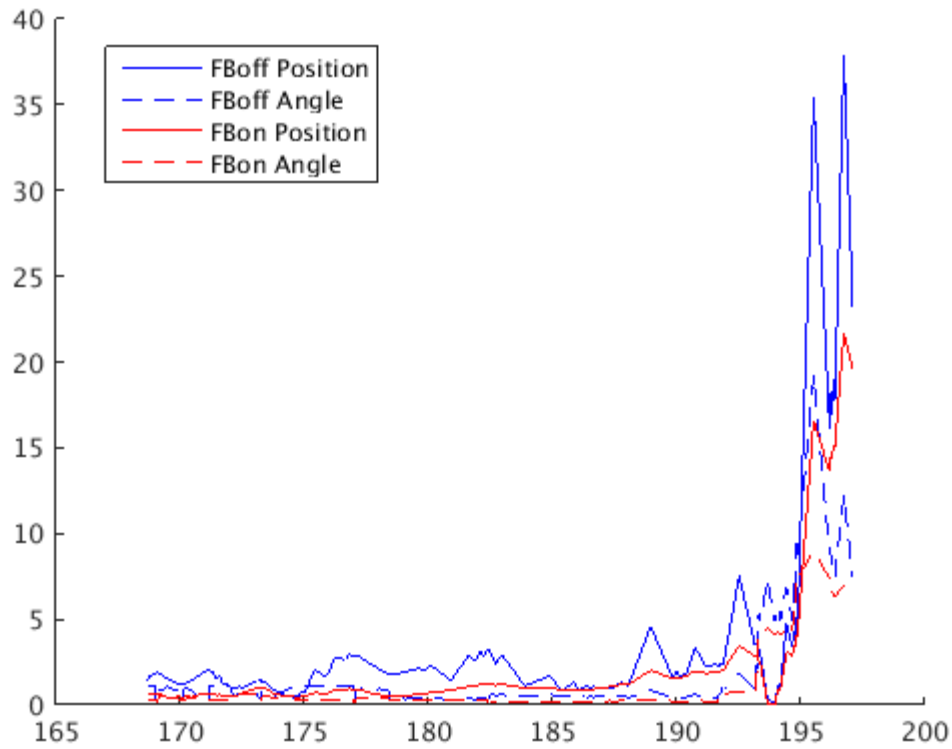
16/12/2015 dataset



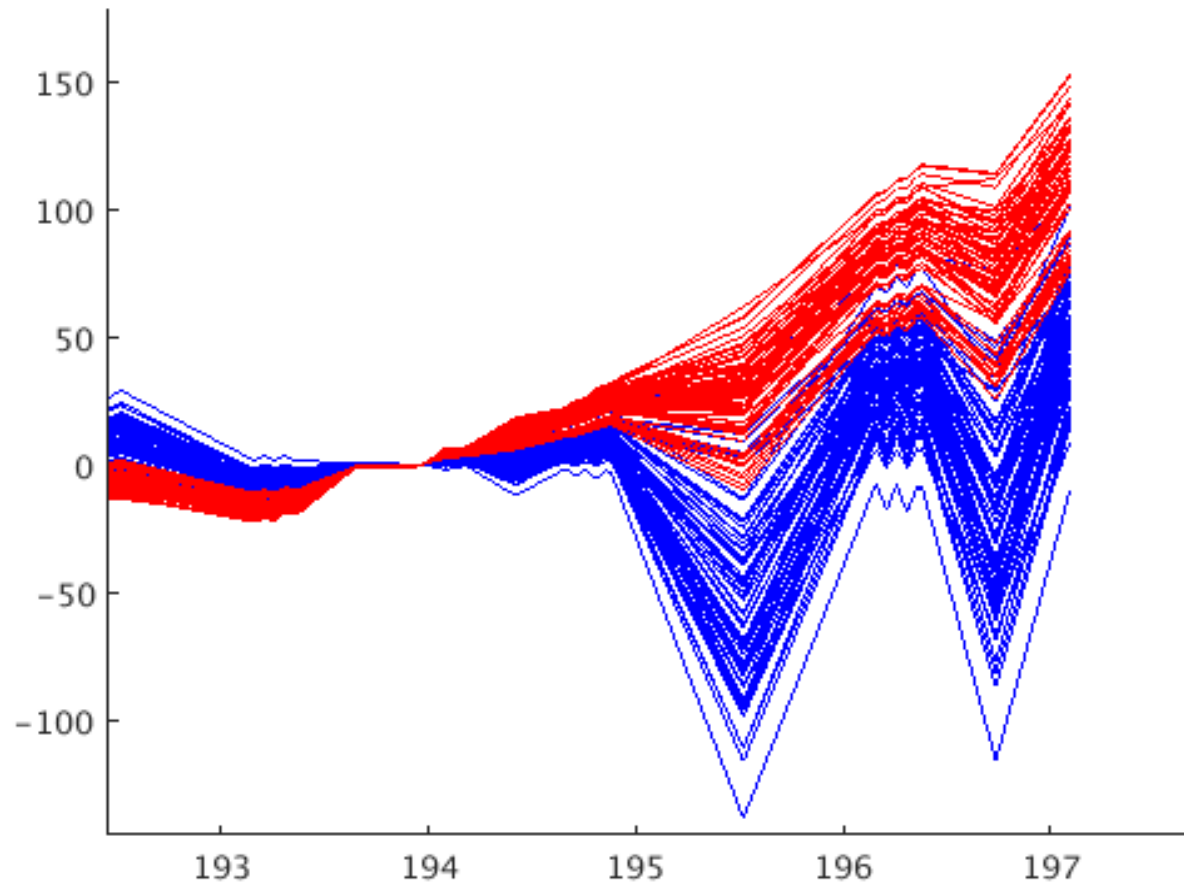
Position/Angle jitter envelopes



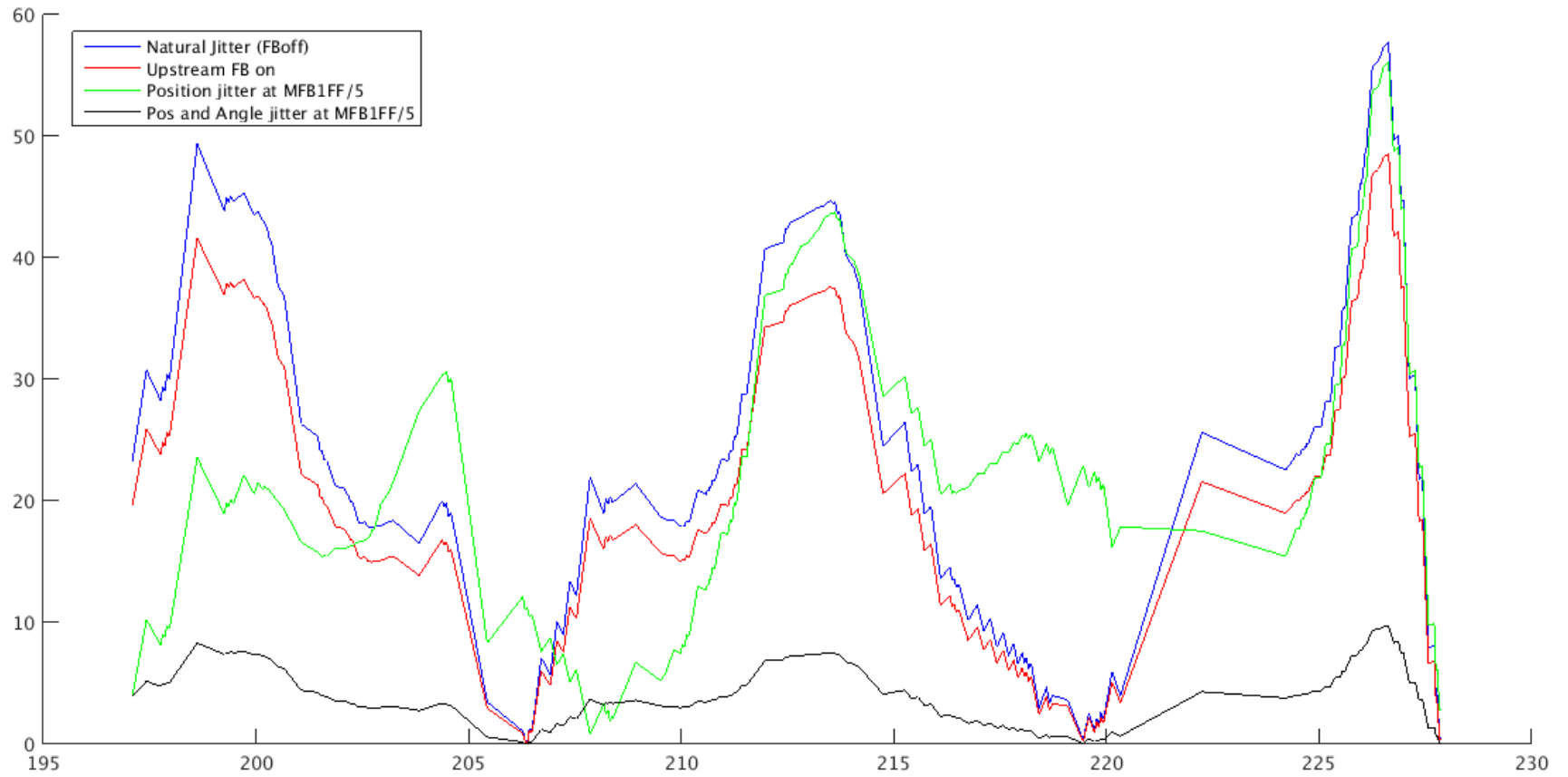
Pos/Ang envelopes (2)



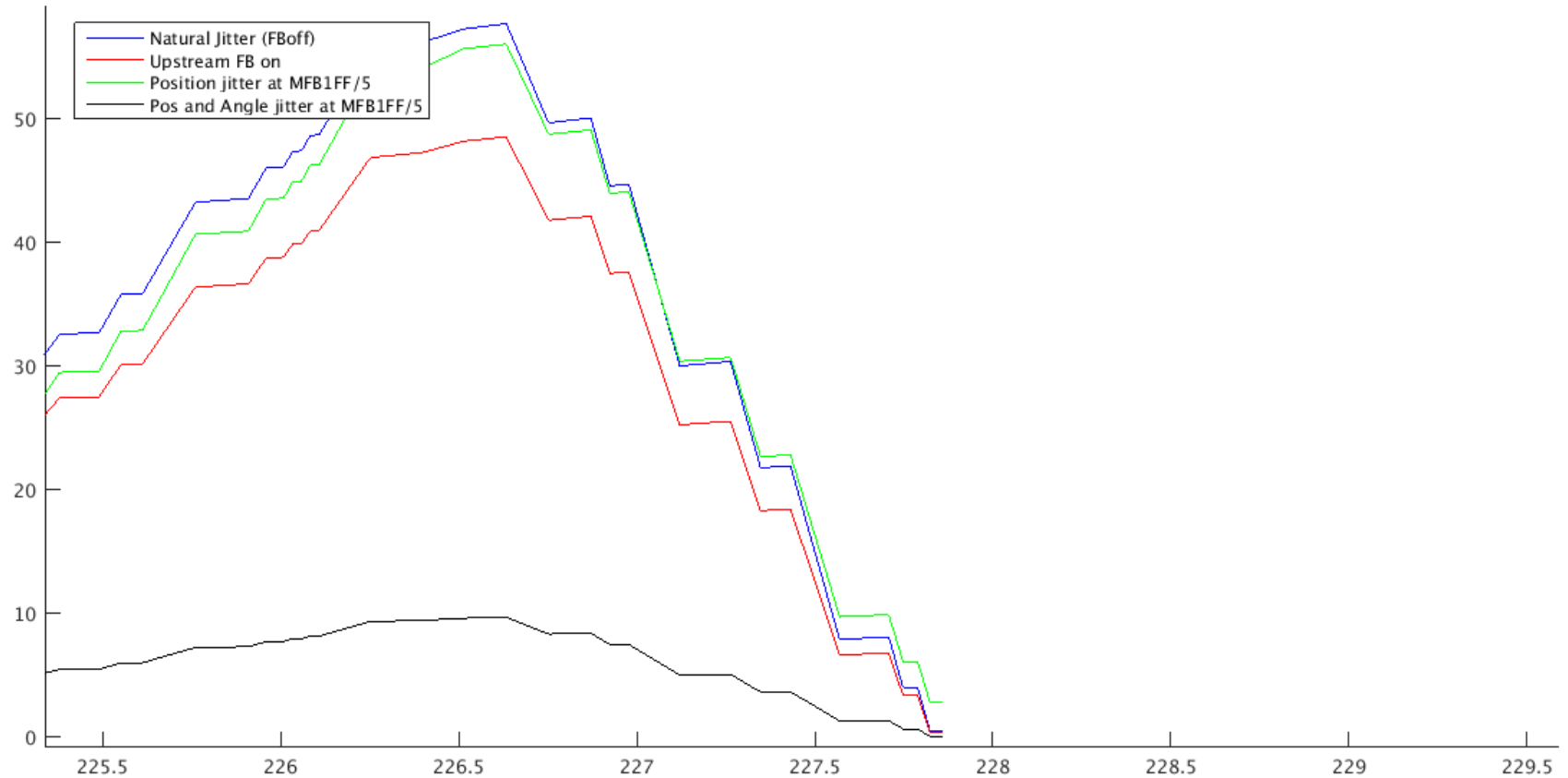
Trajectories – shot-by-shot



MFB1FF to IP



MFB1FF to IP zoom



19/02/16 data (fbRun7)

Bunch RMS positions:

Feedback Off

	Bunch1	Bunch2	
FONTP2	1.78739	1.84598	um
FONTP3	2.26344	2.41572	um
MFB1FF	16.6951	15.7512	um

Feedback On

	Bunch1	Bunch2	
FONTP2	1.79214	0.849114	um
FONTP3	2.09454	0.797185	um
MFB1FF	16.7929	7.57146	um

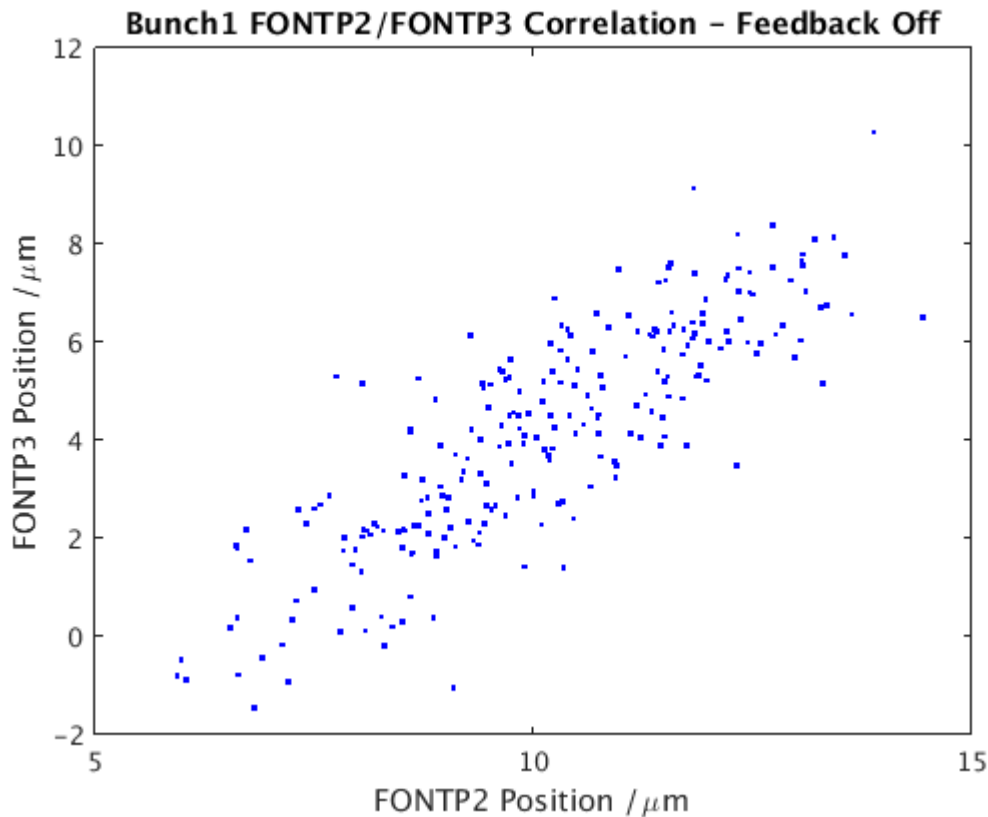
Geometrical calculation method:

	Bunch1	Bunch2	
FONTP2	0.925	1.0469	um
FONTP3	0.925	1.0469	um
MFB1FF	0.925	1.0469	um

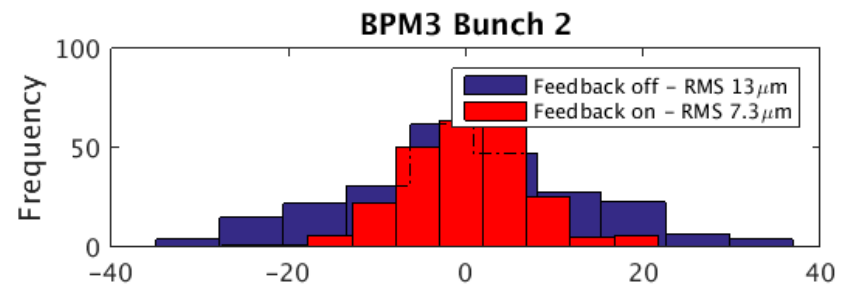
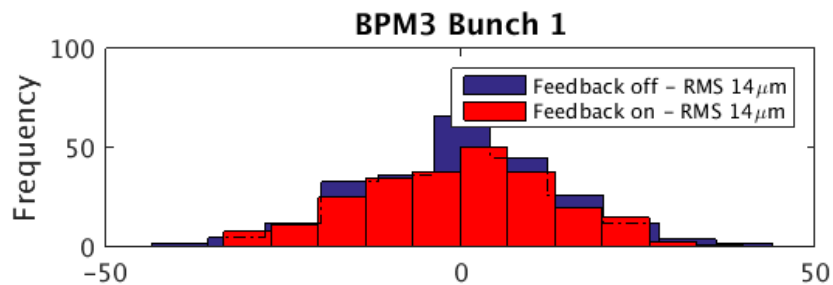
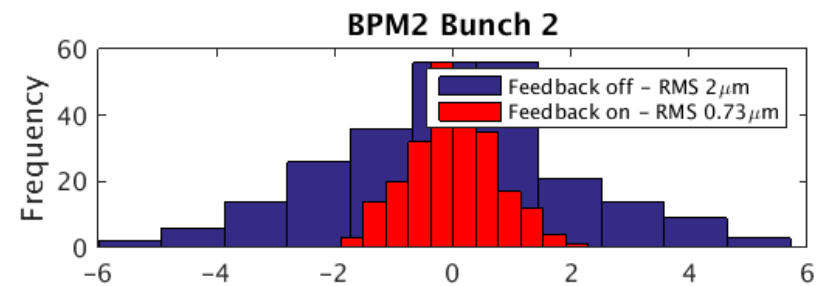
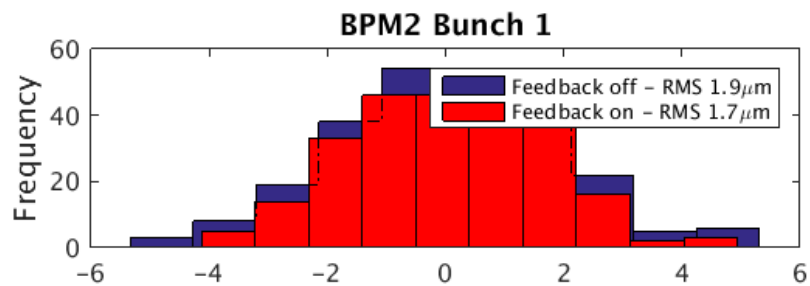
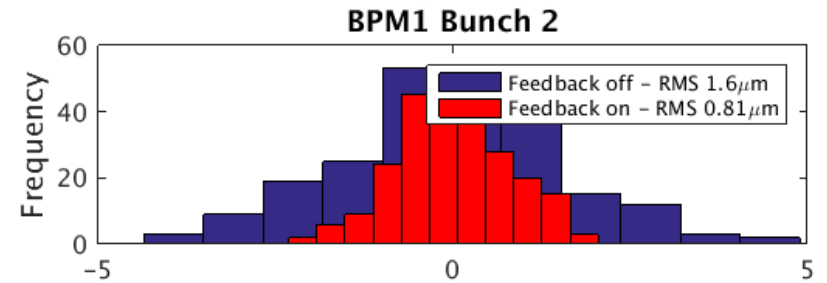
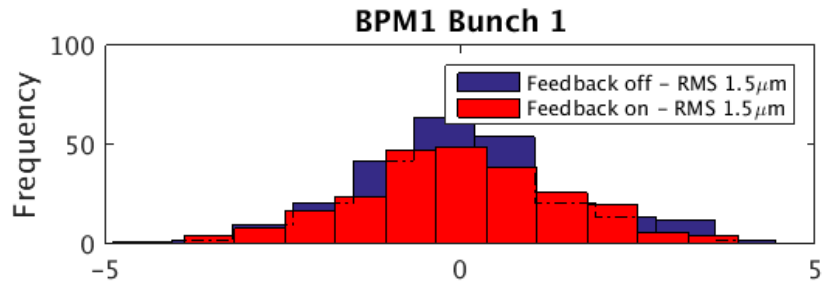
BPM-to-BPM correlations

Correlation coefficient - Feedback Off :

	Corr12	Corr13	Corr23
Bunch1	0.83885	-0.8949	-0.8942
2	0.92266	-0.90175	-0.87011



Feedback Histograms



Phase space at P2

