

LDC

Things to discuss

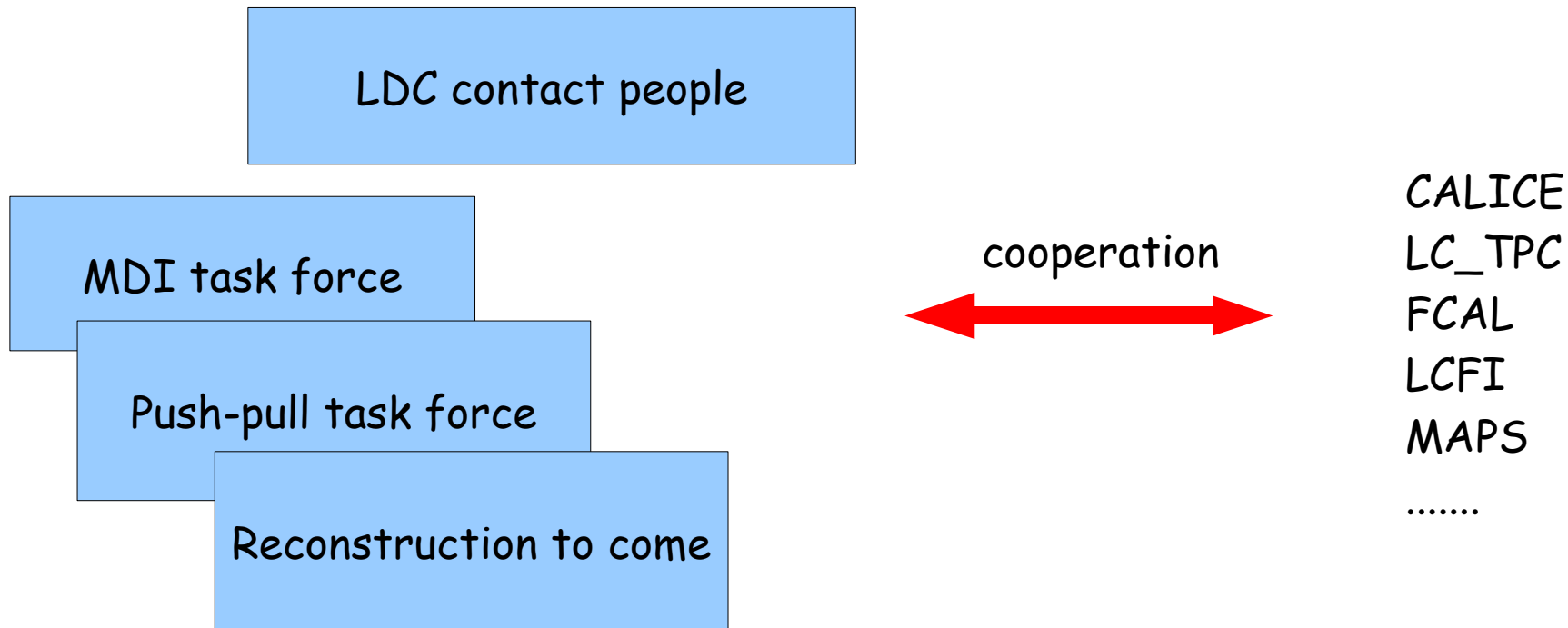
- LDC organisation
- LDC optimization (see also Henris presentation)
- LDC and the detector roadmap
- Next meeting(s)

Organization

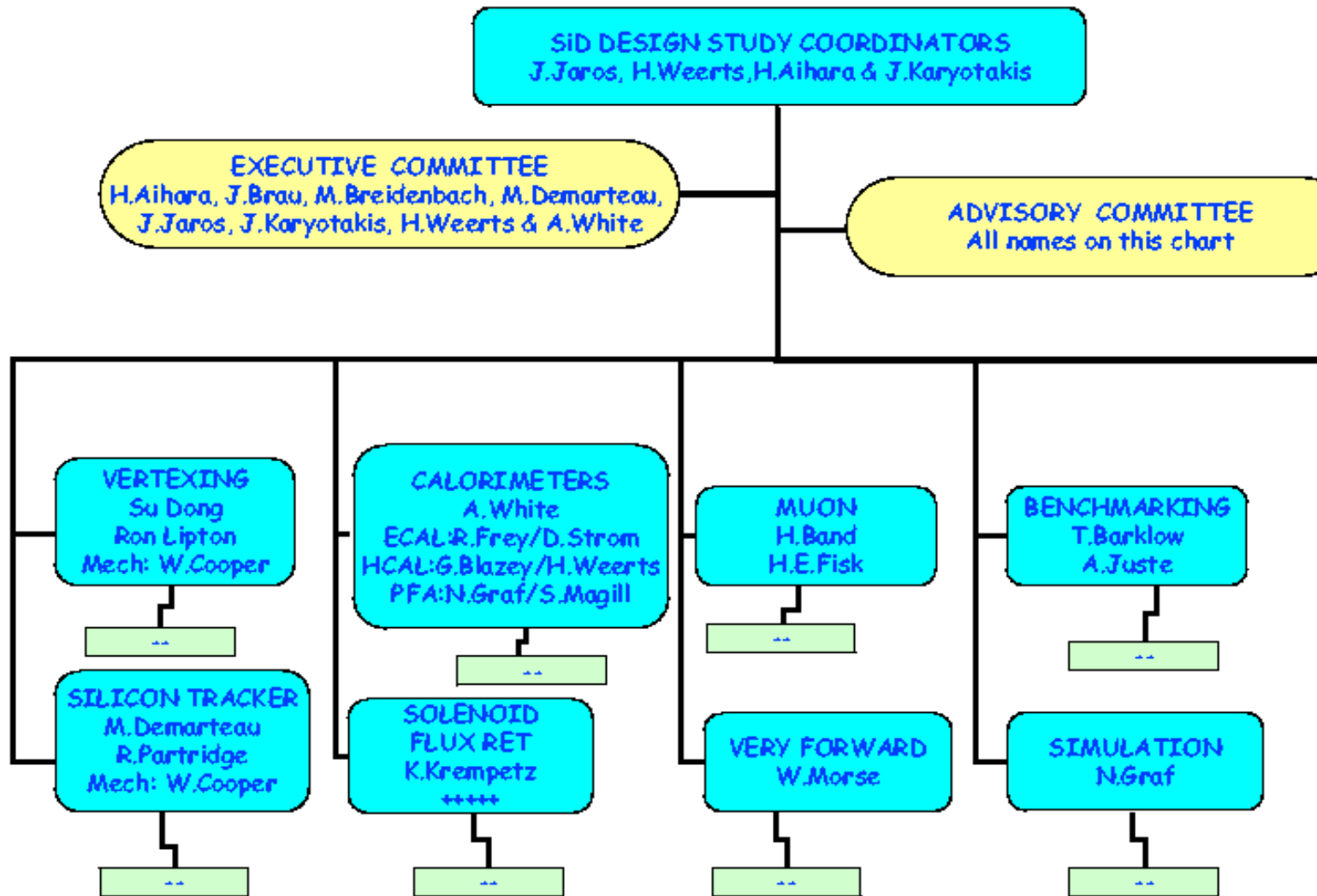
LDC organisation is very light-weight at the moment

LDC relies heavily on the R&D collaborations

LDC tries to minimise the number of additional committees etc



SiD organization and subgroups



LDC optimization

We need to re-visit the detector parameters

- use the much improved tools
- do a real physics driven optimization
- utilise the results from the R&D for a real scientific optimization

This will be a lengthy process, I do not think this will be finished within a few months

We probably need a better organisation of the software support for LDC:

- need more manpower on core tools
- need clearly defined responsibilities for subdetector support (e.g., we need a responsible for the HCAL MOKKA model, etc)

Role of the Event reconstruction working group?

Detector Roadmap

Discussion on roadmap started at Vancouver/ Valencia meeting,
continued at Beijing ACFA meeting

- Match the accelerator time line
 - "RDR" (DCR) in 2007
 - EDR in 2010/ 2011

EDR means some serious engineering (what level of detail?)

How do we get to the EDR stage?

There is a strong pressure from the top to reduce the number of concepts

“Constraints”

External constraints:

- Person power: we are very much limited by person resources, this is getting worse as LHC ramps up
- We are very short on engineering resources, there is no significant improvement visible at the moment (maybe some if LHC resources become available, but sLHC is already casting its shadow ..)
- We need to remain open to new collaborators once the project gets closer to approval (we should not restrict choices or options at this point, except where technically driven)
- We do a lot of R&D: we should use the results, not political reasons to make decisions

Current Proposal

Discussion is under way, everything is preliminary and might change

Someone (WWS, ILCSC?) calls for "letter of intents" (LOI) in ~2008

Everyone can submit such a letter, not restricted to
current concepts
but concepts of course are natural candidates

Based on the letter of intent, a number (2? >2?) of groups are invited
to prepare an EDR

Who invites?

Is this really a closed group?

What, if e.g. A new strong group comes in too late for the selection?

LOI for LDC

We need to understand the meaning of the LOI,
if the community goes in this direction

Cooperation with other concepts

There are already close cooperation with other concepts (SiD, GLD)

There is a natural closeness to GLD, due to the similar nature of the two concepts

We have started a discussion how we can come to a close cooperation between LDC and GLD, which has started on a very positive note

- common meetings (first planned before LCWS)
- common notes where appropriate
- regular common phone meetings between the contacts, to keep in close contact

Maybe go for a common LOI for LDC/ GLD?

Next meeting

LDC meeting before LCWS 2007:

May 29th (Tuesday) 9-12:30 am

Common LDC/ GLD meeting

May 29th (Tuesday) 13:30 - 16:30

After LCWS? Still open.