

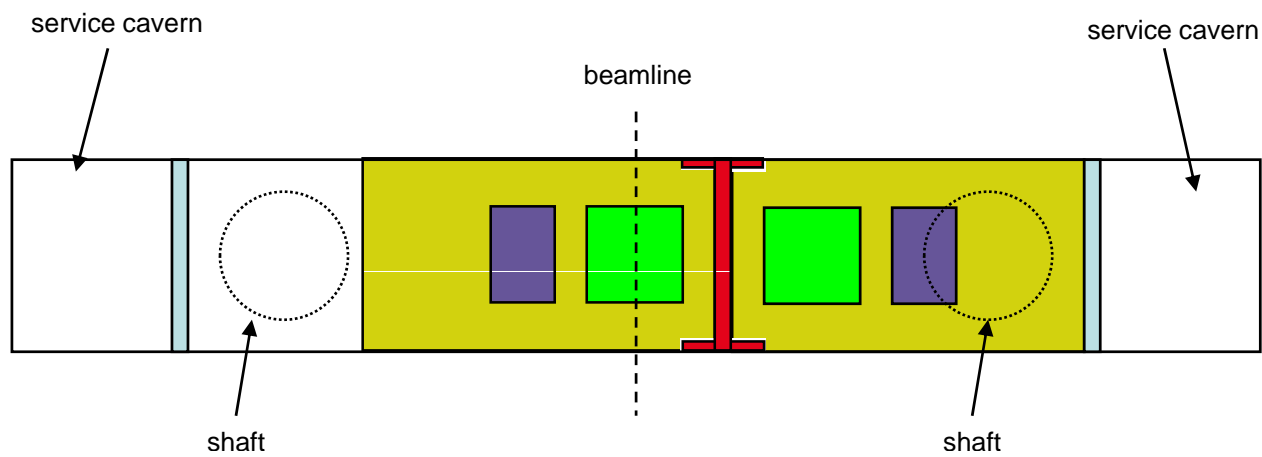
# Experimental Hall For Push-pull

Hitoshi Yamamoto  
in consultation with J.L. Baldy  
5- Jul-2007

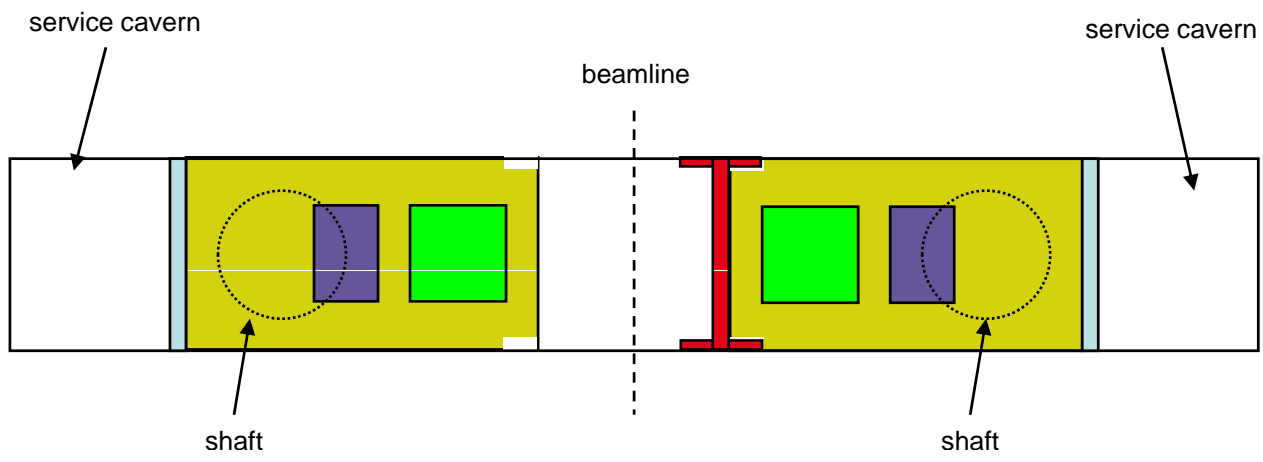
# Push-pull

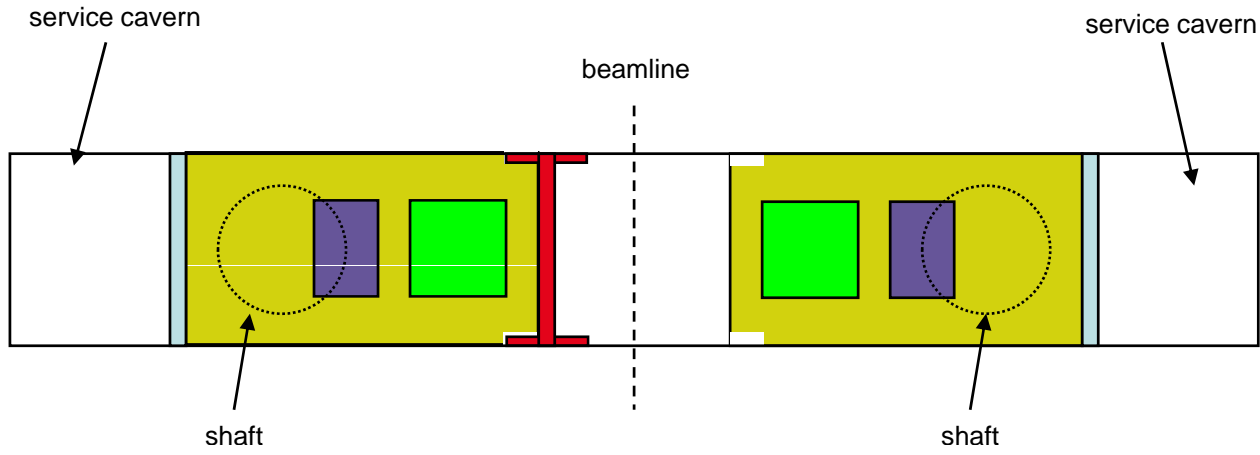
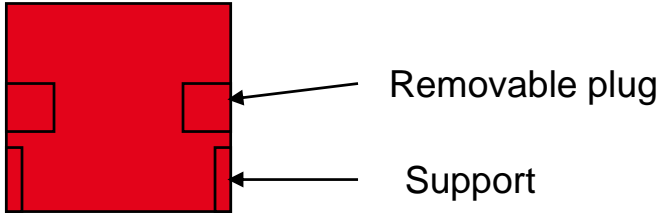
- Experts seem to agree that, for a quick switch, detector, E-hut, and cryogenic system should be on a single platform.
- Detector needs space to move things (end caps, loading place to platform, etc.) around.
- Minimum disconnections in order for 'commissioning/calibration' to move in.
- Service caverns are needed for each detector.

## Left detector on beamline

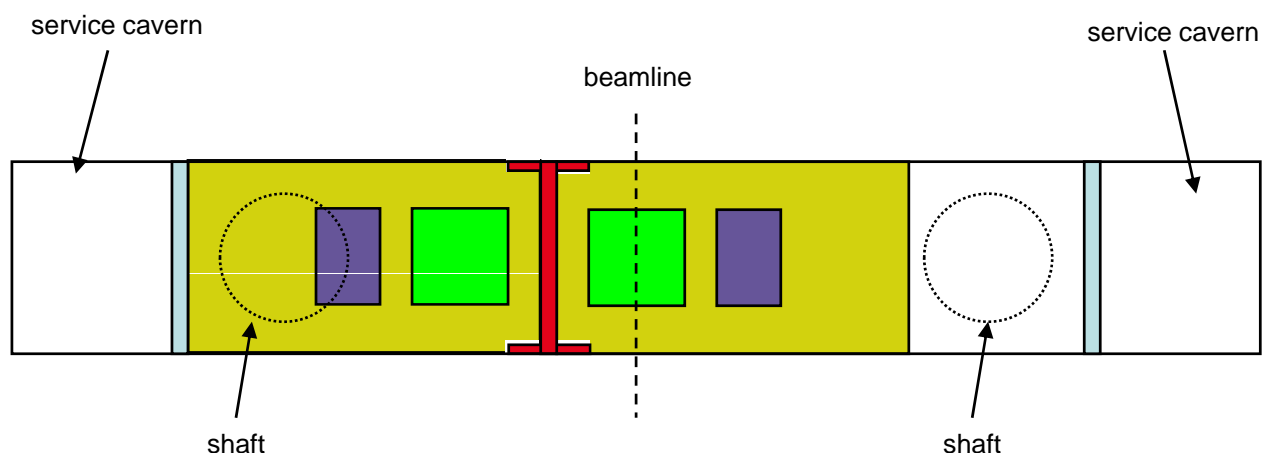


Right detector is assembled as if non-pushpull

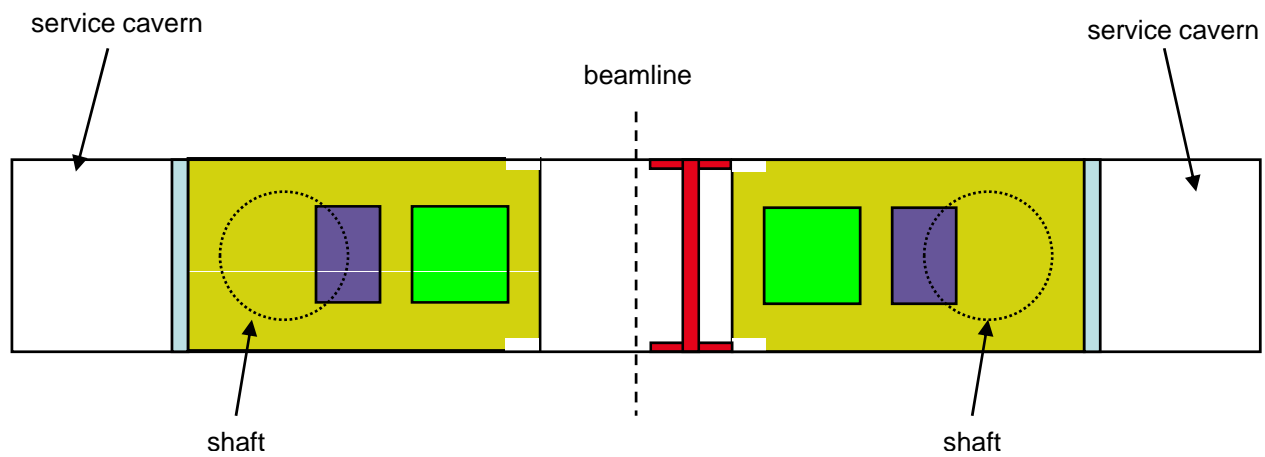




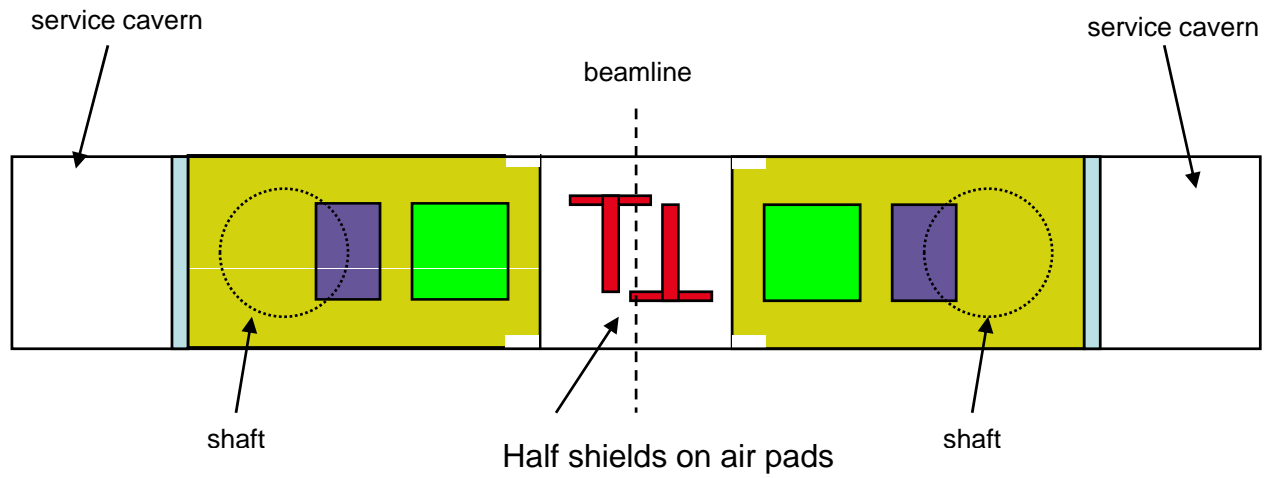
# Right detector on beamline



# Both detectors being serviced



## Another possibility for the shield design





# Expensive design

