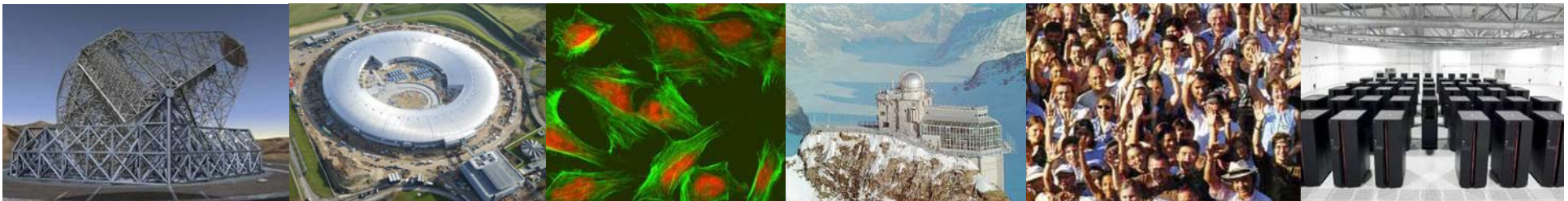


Research Infrastructures in FP7

Gerburg Larsen
European Commission, DG Research, RTD-B3

EUDET Annual Meeting
Palaiseau/FR, 09 October 2007



F	A	R	I	C	R	D	L	S	H	I	G	D	A	V	V	I	L	D	V	E	Q	L	G	I	P	E	Q	E	Y	S	C	V	V	K	M	P	S	G	E	F	A	R	I	C	R	D	L	S	H	I	G	D	A	V	V	I	HsPCNA
F	A	R	I	C	R	D	L	A	Q	F	S	E	S	V	V	I	L	D	Q	E	H	L	G	I	P	E	T	D	F	S	C	V	V	R	M	P	A	M	E	F	A	R	I	C	R	D	L	A	Q	F	S	E	S	V	V	I	DmPCNA
F	S	K	I	V	R	D	L	S	Q	L	S	D	S	I	N	I	I	D	A	D	F	L	K	I	E	E	L	Q	Y	D	S	T	L	S	L	P	S	S	E	F	S	K	I	V	R	D	L	S	Q	L	S	D	S	I	N	I	ScPCNA



EUROPEAN
COMMISSION

Community research

Content

- **FP6 I 3 projects - overview**
- **Research Infrastructures in FP7**
- **Integrating Activities in FP7**
- **FP7 call 3 outline**

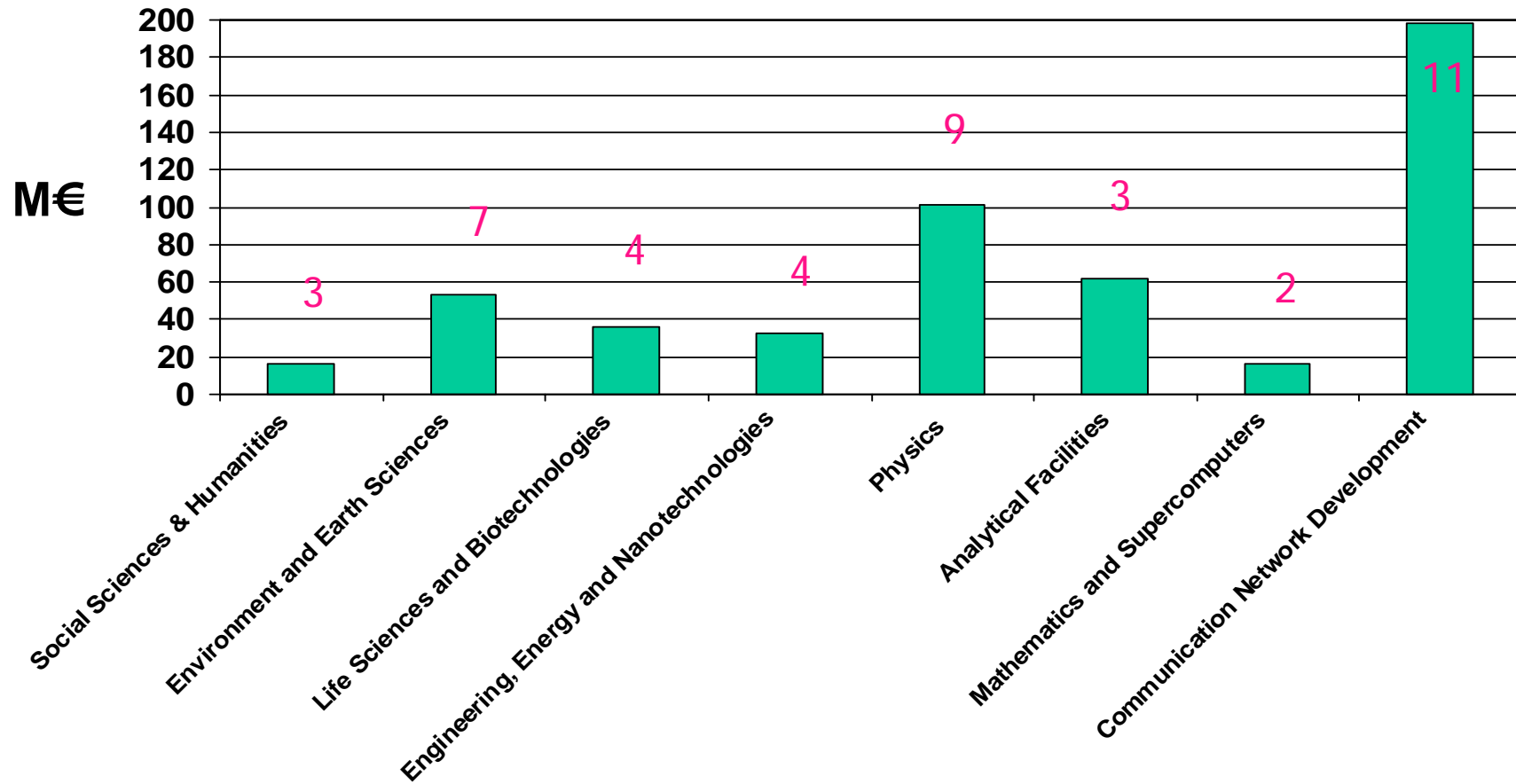




EUROPEAN
COMMISSION

Community research

EC funding for I3 by area (total budget within FP6: 517 M€)



43 funded projects





EUROPEAN
COMMISSION

Community research

FP6 I3 global figures (DG RTD)

318 M€ for **32** contracts

623 contractors (~**400** independent contractors)

- Research centres: 50%
- Higher education organisations: 43%
- Industries: 3%
- Other: 4%

260 research infrastructures, with **346** facilities offering access

Number of expected users:

- In person ("hands on"): **17 500**
- Electronic, freely accessible: **Several tens of thousands**
- Remote scientific services: **300**
- Electronic, with login: **8 000**





EUROPEAN
COMMISSION

Community research

Main characteristics of an average FP6 I3

- **Average number of contractors:**
19 of which **7** are offering access
- **Average EC contribution: 10 M€**
 - Management: **6%**
 - Networking activities: **20%**
 - Transnational Access activities: **29%**
 - Joint Research activities: **45%**

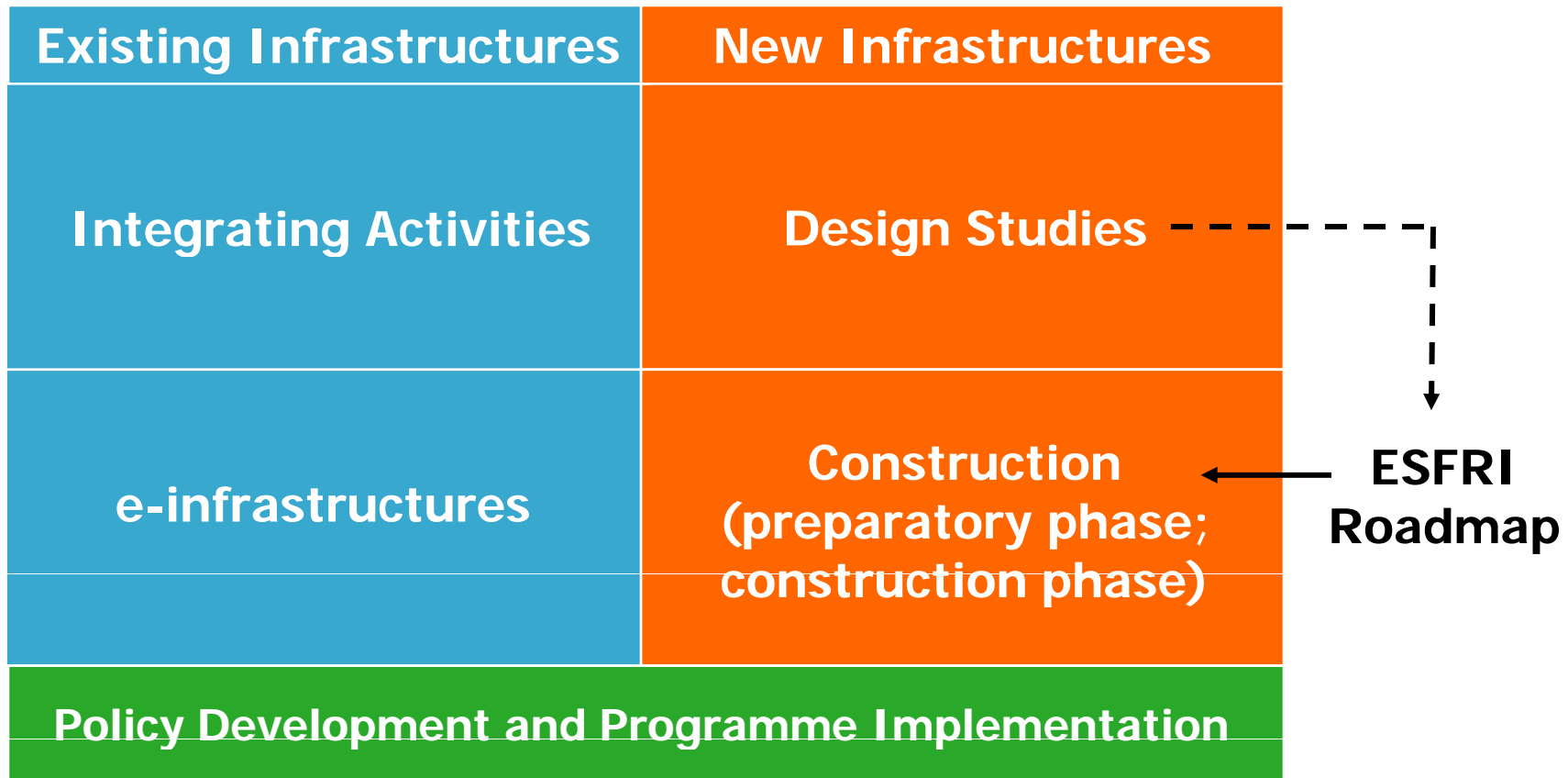




EUROPEAN
COMMISSION

Community research

FP7 Research Infrastructures in brief





EUROPEAN
COMMISSION

Community research

Support to existing Research Infrastructures

- **Integrating Activities** to promote the coherence and use and development of Research Infrastructures in a given field, *implemented through:*
 - A **bottom-up** approach for proposals open to all fields of science
 - A **targeted** approach with topics defined in cooperation with the FP7 thematic areas
- *[ICT based e-infrastructures in support of research]*

580 M€
2007-2013
Calls 3, 6, 7

420 M€ 2007-
2013
calls 1, 2, 4, 5,
6,7





EUROPEAN
COMMISSION

Community research

Policy development and Programme implementation

65 M€ 2007-2013
Calls 1, 2, 3, 5,
6,7

- ERA-NETs for Research Infrastructures
- Studies, conferences and co-ordination actions for policy development, including international co-operation
- Co-ordination actions to support emerging needs
- Network of National Contact Points (NCP)
- Other support actions, as appropriate





EUROPEAN
COMMISSION

Community research

Integrating Activities in FP7

- Collaboration of **existing Research Infrastructures** in a given field of science
 - Normally all major RI in Europe in the field
 - At least 3 MS or AS
- Based on the continuation of the successful FP6 instrument "**I3**"
- 3 types of activities obligatory for each project:
 - Networking activities
 - Transnational Access activities
 - Joint Research activities
- Project type: *combination of* collaborative project + co-ordination and support actions





EUROPEAN
COMMISSION

Community research

Networking Activities

- To foster a culture of **co-operation** between the Research Infrastructures and the related scientific communities
- Types of activities:
 - Towards a common **long-term strategy**: foresight...
 - Towards **good practice**: exchange of personnel and visits, standards and quality...
 - Towards **users**: training, feedback, coordination...
 - Towards **virtual research communities**: Web sites, common software, databases, data management...
 - **Technical workshops**, forums, working groups and studies...





EUROPEAN
COMMISSION

Community research

Transnational Access and/or Service activities (1)

- Provide **Transnational Access** to researchers or research teams to one or more infrastructures among those operated by the participants
 - “Hands-on” access
 - **Remote** access: provision of reference material, sample analysis...
 - Remote access to distributed infrastructures: “transnationality” will not apply*
- Provide RI-related **services** to the scientific community
 - Access to scientific services freely available **through communication networks**, e.g. databases available on the web



Transnational Access and/or Service activities (2)

- Specific provisions for **transnational access** activities are defined in Annex III to the Grant Agreement
 - **Access costs = unit cost** x quantity of access provided
 - **An estimated** unit cost will be specified in Annex I
 - EC financial contribution will be adjusted in the final financial statement (Form C) based on the **real unit costs** (will not exceed 20% of costs of providing total access to the installation over the duration of the project)
- Specific provisions for **access to services** freely available through communication networks are defined in Special Clause 17
 - EC financial contribution for **access costs** will not exceed 20% of operating costs incurred



EUROPEAN
COMMISSION

Community research

Joint Research Activities

- Explore new fundamental technologies or techniques underpinning the efficient and joint use of the participating Research Infrastructures
To improve the services provided by the infrastructures (in quality and/or quantity)
- Forms of activities:
 - Instrumentation prototype development
 - Development of methods, protocols, standards...
 - Development of software, middleware, algorithms, database creation, upgrade, curation...
 - Development and curation of samples





EUROPEAN
COMMISSION

Community research

New approach for Integrating Activities in FP7

- **Bottom-up approach** for all fields of science (as in FP6)
- **New: targeted approach** to respond to identified strategic needs:
 - creating synergies and ensuring consistency with other parts of the Framework Programme,
 - in important fields currently not well covered





EUROPEAN
COMMISSION

Community research

Priority topics under the targeted approach

- Health (6)
- Food, Agriculture and Biotechnology (4)
- Information and Communication Technologies (3)
- Nanosciences, Nanotechnologies and Materials (2)
- Energy (5)
- Environment (4)
- Transport (2)
- Socio-economic Sciences and Humanities (3)

→ 29 priority topics for RI in 8 fields of R&D





EUROPEAN
COMMISSION

Community research

FP7 Call 3 outline (1)

- For **Integrating Activities** and **Support to policy development and programme implementation**
- **Publication: 15 November 2007**
- **Closure: 15 February 2008**
- **Indicative budget for Integrating Activities: 84.5 M€ (+ 192 M€ from the 2009 budget)**
 - For both **bottom-up** and **targeted approach**
- **Indicative budget for Policy development: 5 M€**
- **Results within 4 months after closure date**
- **First contracts expected to come into force before the end of 2008**





EUROPEAN
COMMISSION

Community research

FP7 Call 3 outline (2)

- **Procedure for evaluation**
 - remote + panel evaluation
 - **1 Panel organised in 5 thematic sub-panels***
 - Social Sciences, Humanities
 - Environmental Sciences, Non-nuclear Energy
 - Biomedical and Life Sciences
 - Material Sciences, Analytical Facilities, Computer-related Sciences
 - Physics, Astronomy, Nuclear and Particle Physics, incl. Nuclear Energy
- * Computer and data treatment experts in each sub-panel*
- **2 priority lists**





EUROPEAN
COMMISSION

Community research

Evaluation Criteria

- **All FP7 proposals will be assessed according to 3 criteria:**
 - **Scientific and/or technological excellence** (threshold 3/5)
 - **Quality and efficiency of the implementation and the management** (threshold 3/5)
 - **Impact** (threshold 3/5)
- **Overall threshold 10/15**
- **These criteria will be further specified in the revised Work Programme and in the respective guides for applicants**





EUROPEAN
COMMISSION

Community research

Expected size of an Integrating Activity under FP7

- **Duration: 4 years max**
- **Number of contractors: 20 (FP6 average)**
 - Experience shows that projects with more than 20 contractors are difficult to manage
 - *Not all partners need to be contractors*
- **EC contribution:**
 - *Indicative at this stage: We expect most of the projects to be well below 10 M€; in justified cases (e.g. facilities serving exceptionally broad user communities) up to 15 M€*

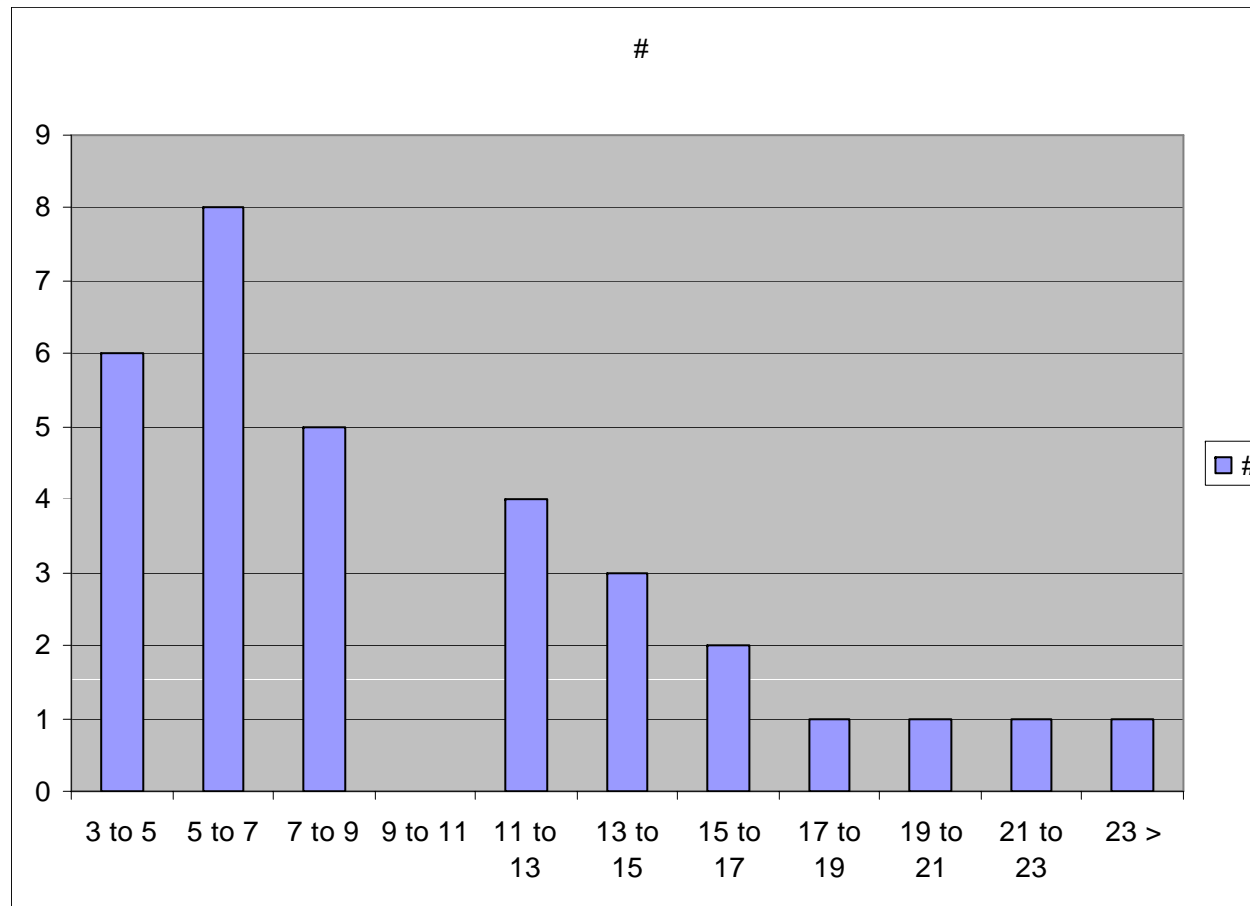




EUROPEAN
COMMISSION

Community research

I3 analysis FP6



60% of I3s are between 3 and 9 M€ with an average of 5,8 M€

40 % are between 11 and 27 M€ with an average of 15,9 M€





EUROPEAN
COMMISSION

Community research

Useful links

- **FP7, Capacities Specific Programme, RI part**
http://cordis.europa.eu/fp7/home_en.html
http://cordis.europa.eu/fp7/capacities/home_en.html
http://cordis.europa.eu/fp7/capacities/research-infrastructures_en.html
- **Research Infrastructures on CORDIS (FP6)**
<http://cordis.europa.eu/infrastructures/>
- **Research Infrastructures in Europa**
<http://ec.europa.eu/research/infrastructures>
- **Model Grant Agreement**
http://cordis.europa.eu/fp7/calls-grant-agreement_en.html#standard_ga



Planning of calls and indicative budget

Total operational budget 1665 M€	<i>Call 1 2007</i>	<i>Call 2 2007</i>	<i>Call 3 2008</i>	<i>Call 4 2008</i>	<i>Call 5 2009</i>	<i>Call 6 2010</i>	<i>Call 7 2012</i>
Integrating activities			277			x	x
e-Infrastructures	42	50		113	x		x
Design studies	31					x	
Construction – Support to the Preparatory Phase	147					x	
Construction – Support to the Implementation Phase	RSFF (200 M€) + 130 M€						
Policy Development and Programme Implementation	8	14	5		x	x	x
Total per call (M€)	228	64	282	113			

Planning of calls for integrating activities

