

Agenda for 4th ICB meeting (from 8:30 to 10:00 in Chicago, IL)

Open Session

08:30 Introduction to ICB Session: Report on ATF International Collaboration, and Organization 2008-2011 (10')

Junji Urakawa (*KEK*)

08:40 Report of 5th and 6th Meetings of the ATF Technical Board (30') Andrzej Wolski (*Cockcroft Institute and University of Liverpool*)

09:10 Present Status of ATF/ATF2 (15')

Nobuhiro Terunuma (*KEK*)

09:25 ATF2 Commissioning Plan (15') Toshiaki Tauchi (*KEK*)

Closed Session

09:40 ICB Business (20') Ewan Paterson (*SLAC*)

ATF International Collaboration

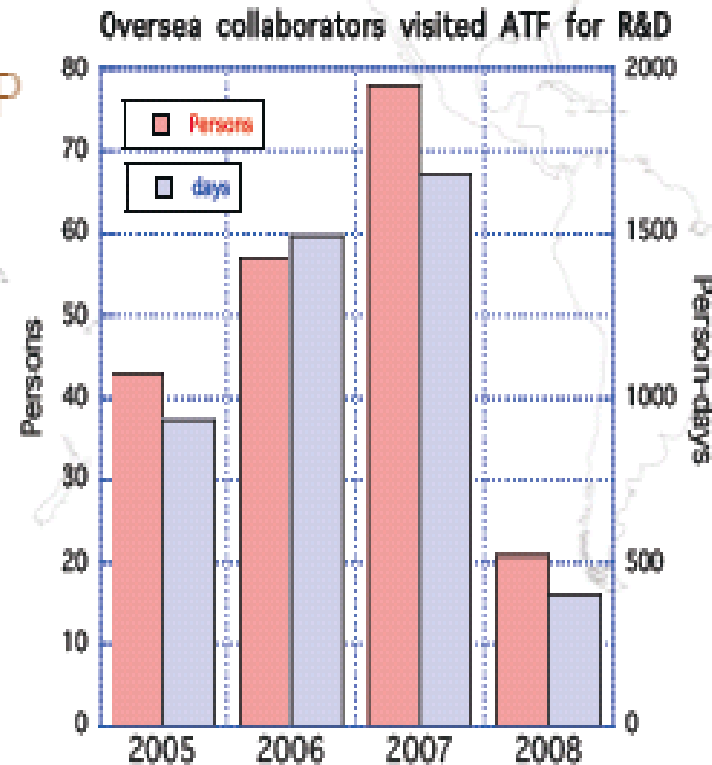
CERN
DESY
LAL, Orsay
Tomsk Polytechnic Univ.
INFN, Frascati
University College London
Oxford Univ.
Royal Holloway Univ.

KEK
Waseda U.
Nagoya U.
Tokyo U.
Kyoto U.
Hiroshima U.
PAL
IHEP

SLAC
LBNL
FNAL
Cornell Univ.

**Overseas collaborators
visited for R&D at ATF**

**23 Institutes,
~60 peoples,
~1500 people-days**



Organization 2008-2011

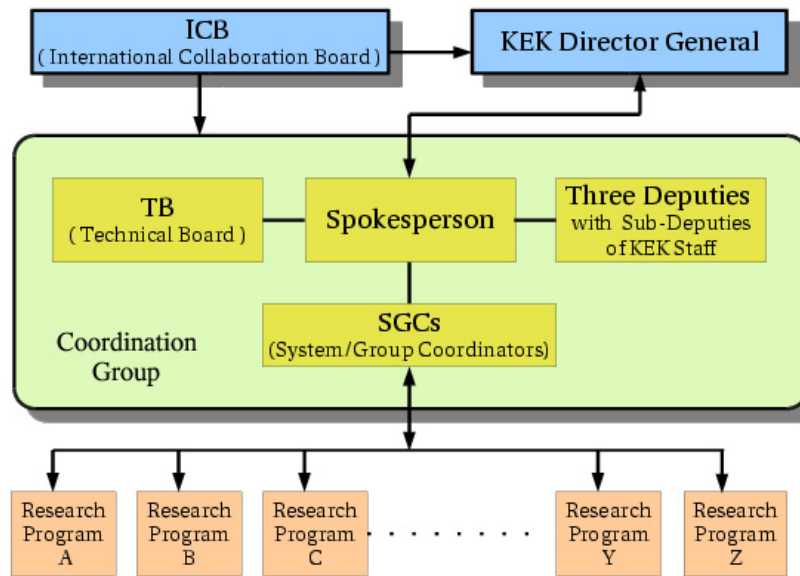
ICB: decision making body for executive matters related to the ATF collaboration (chair: Ewan Paterson, SLAC)



TB: assist the Spokesperson in formulating the ATF Annual Activity Plan, including the budget and beam-time allocation and assist the ICB in assessing the scientific progress (co-chairs: A.Wolski, CI, E.Elsen, DESY)



ATF International Collaboration



Spokesperson: direct and coordinate the work required at ATF/ATF2 in accordance with the ATF Annual Activity Plan, report the progress to ICB and the progress and the matters related to KEK budget to director of KEK (Junji Urakawa, KEK):



LCWS08

Deputies of Spokesperson: carry out tasks in the areas of

- Beam operation (Shigeru Kuroda, KEK)



- Hardware maintenance (Nobuhiro Terunuma, KEK)



- Design, construction and commissioning of ATF2 (Andrei Seryi, SLAC)



1. Coordination for each Institute : If personal proposal from researcher will be given to SP, SP should ask related member of SGC and has to ask the intention of his institute. If each institute approves his proposal, the institute must support him.

2. Usually schedule of ATF machine operation is divided to **two blocks** of operating time per year with about four months summer long shutdown. One block is from **mid. of Oct. to Dec.**, and the other is from **mid. of Jan. to mid. of June**. Since there are many collaborators, we propose two meetings of TB per year in Dec. and May, **(or Mid. of June by WebEx)** for review and recommendation of the research programs at ATF.

3. Requests to new proposal : Purpose, Research method, Period of the research, Manpower, Budget plan etc. should be reviewed for the approval.

4. Member of ATF operation group : Shift leader is responsible for the safety and should be KEK staff. Since ATF operation group **(including remote participation group or member)** is responsible for beam tuning, making a good beam and required beam by R&D group, ATF operation group can involve many foreign physicists and engineers.

ICB members

jmp@slac.stanford.edu, mcrec@fnal.gov, Harrison@bnl.gov,
jncorlett@lbl.gov, b.foster1@physics.ox.ac.uk, djm@hep.ucl.ac.uk,
Jean-Pierre.Delahaye@cern.ch, sasao@scphys.kyoto-u.ac.jp,
sachio@icepp.s.u-tokyo.ac.jp, nakanisi@spin.phys.nagoya-u.ac.jp,
washiom@waseda.jp, jchoi@postech.ac.kr, eckhard.elsen@desy.de,
eskim1@mail.knu.ac.kr, Kaoru.Yokoya@kek.jp, gaoj@ihep.ac.cn,
rem@lepp.cornell.edu, p.burrows1@physics.ox.ac.uk,

TB and SGC members

tor@slac.stanford.edu, eckhard.elsen@desy.de,
nobu.toge@kek.jp, Hans.Weise@desy.de, Frank.Zimmermann@cern.ch,
blair@pp.rhul.ac.uk, rem@lepp.cornell.edu, a.wolski@dl.ac.uk,
eskim1@mail.knu.ac.kr, Kiyoshi.Kubo@kek.jp,
ryuhei.sugahara@kek.jp, sanuki@phys.s.u-tokyo.ac.jp, Shigeru.Kuroda@kek.jp,
toshiyuki.okugi@kek.jp, Nobuhiro.Terunuma@kek.jp, mkuriki@hiroshima-u.ac.jp,
seryi@slac.stanford.edu, Toshiaki.Tauchi@kek.jp, jnelson@slac.stanford.edu,
manfred@fnal.gov,

John Corlett	LBNL jncorlett@lbl.gov
Jinhyuk Choi	PAL jchoi@postech.ac.kr ---> eskim1@mail.knu.ac.kr
J.P. Delahaye	CERN Jean-Pierre.Delahaye@cern.ch
Ewan Paterson	(chair) SLAC jmp@slac.stanford.edu
Brian Foster	Oxford b.foster1@physics.ox.ac.uk
Jai Gao	IHEP gaoj@ihep.ac.cn
Michael Harrison	BNL harrison@bnl.gov
Sachio Komamiya	University of Tokyo sachio@icepp.s.u-tokyo.ac.jp
David Miller	UCL djm@hep.ucl.ac.uk -----> sboogert@pp.rhul.ac.uk
Tsutomu Nakanisi	Nagoya University nakanisi@spin.phys.nagoya-u.ac.jp
Mitsuaki Nozaki	KEK mitsuaki.nozaki@kek.jp ---> Kaoru.Yokoya@kek.jp
Marc Ross	FNAL mcrec@fnal.gov
Nobaru Sasao	Kyoto University sasao@scphys.kyoto-u.ac.jp
Masakazu Washio	Waseda University washiom@waseda.jp
Kaoru Yokoya	KEK Kaoru.Yokoya@kek.jp
Philip Burrows	JAI p.burrows1@physics.ox.ac.uk
Eckhard Elsen	DESY eckhard.elsen@desy.de
B.Meller(M.Tigner)	Cornell rem@lepp.cornell.edu (mt52@cornell.edu)

ATF collaboration & ATF2 facility

- ATF2 will prototype ILC-FF,
- help development tuning methods, instrumentation (laser wires, fast feedback, submicron resolution BPMs),
- help to learn achieving small size & stability reliably,
- potentially able to test stability of FD magnetic center.



- ATF2 is one of central elements of BDS EDR work, as it will address a large fraction of BDS technical cost risk.
- **Constructed as ILC model, with in-kind contribution from partners and host country providing civil construction**
- ATF2 commissioning will start in Autumn of 2008