

# Stray field of GLDc

Yasuhiro Sugimoto

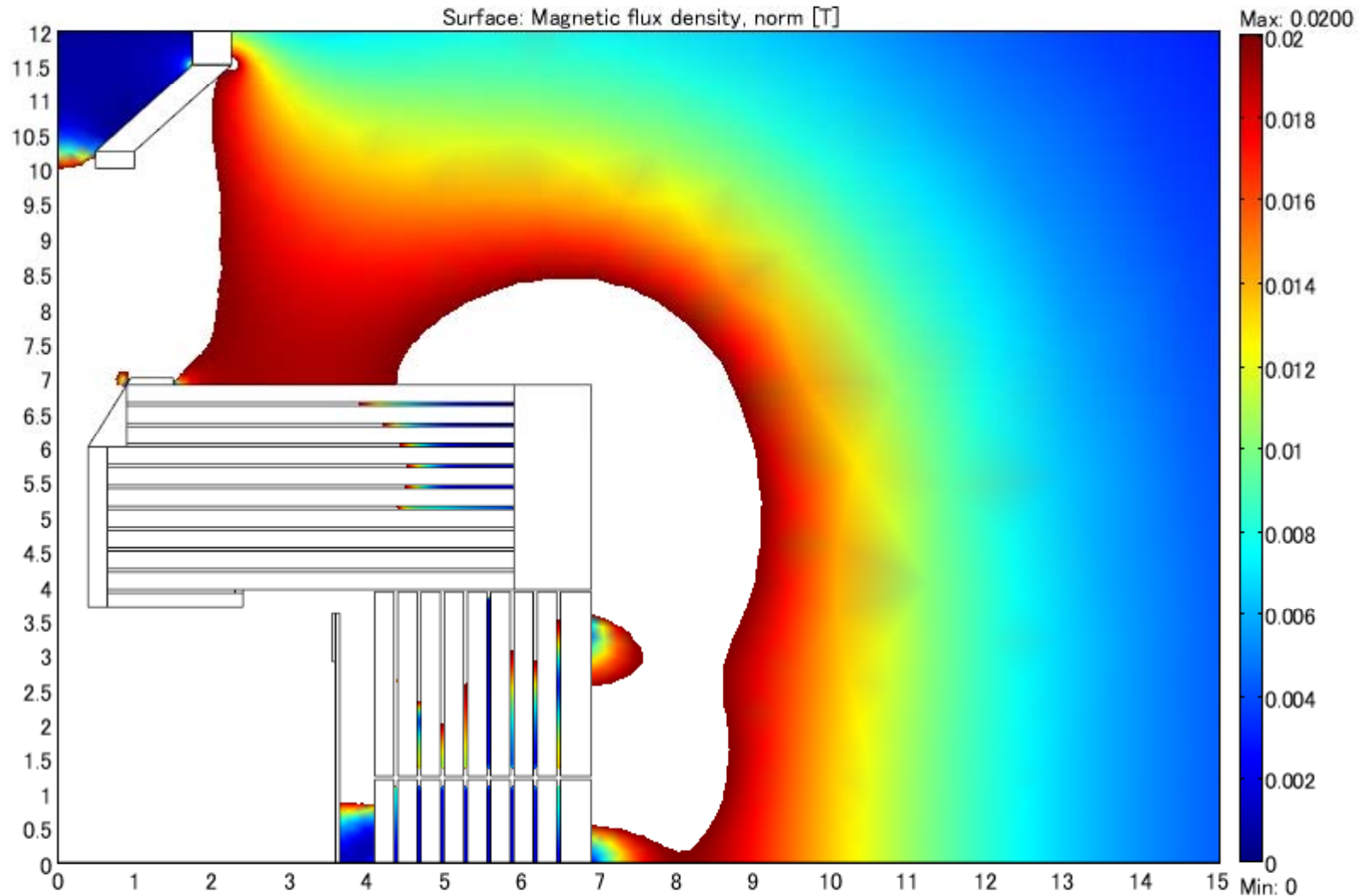
2008.5.23

# Agreement after TILC08

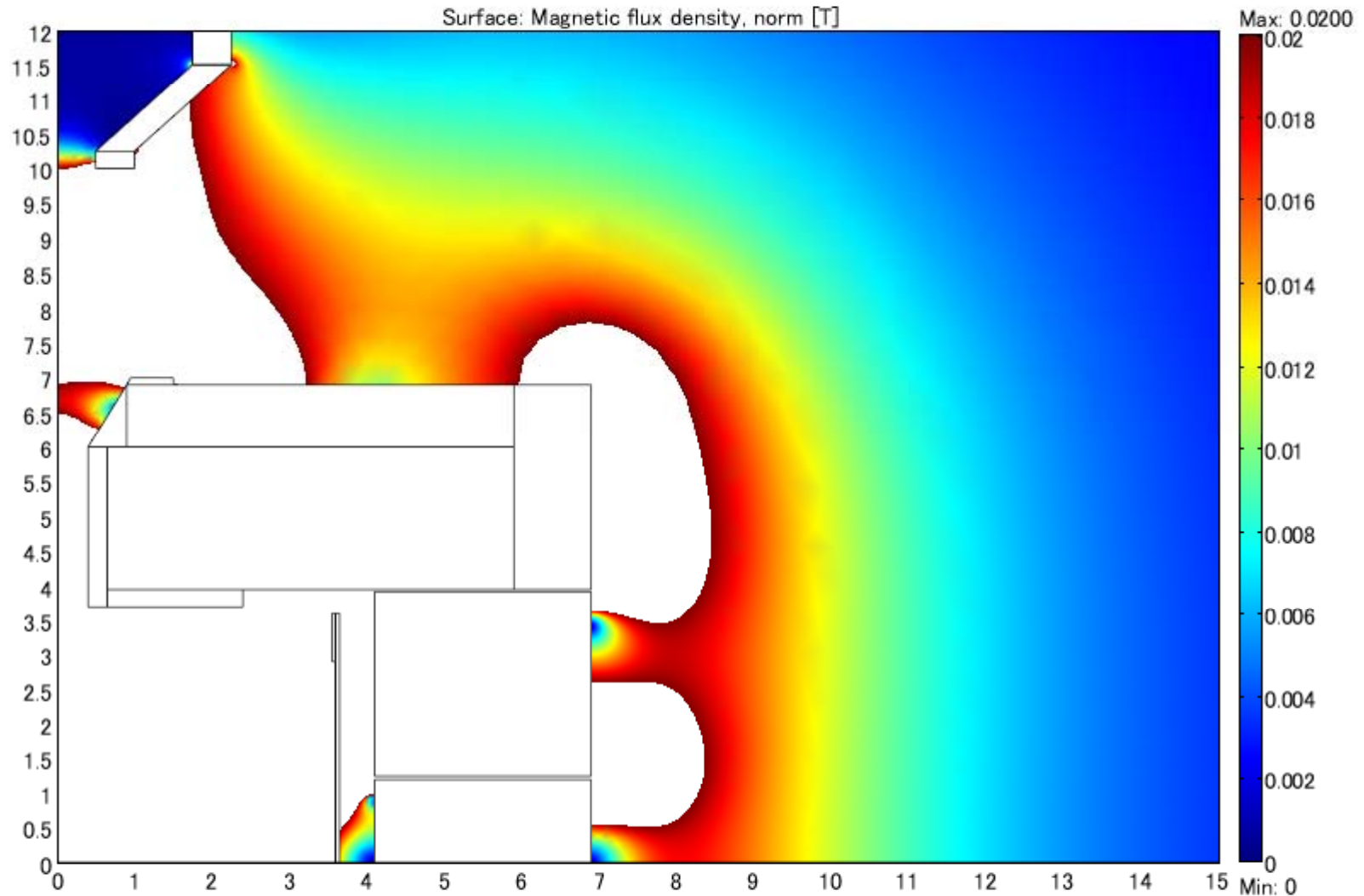
- A maximum stray field of 200 G at 10 m in Z and yoke outer radius + 50 cm

Can we achieve it ?

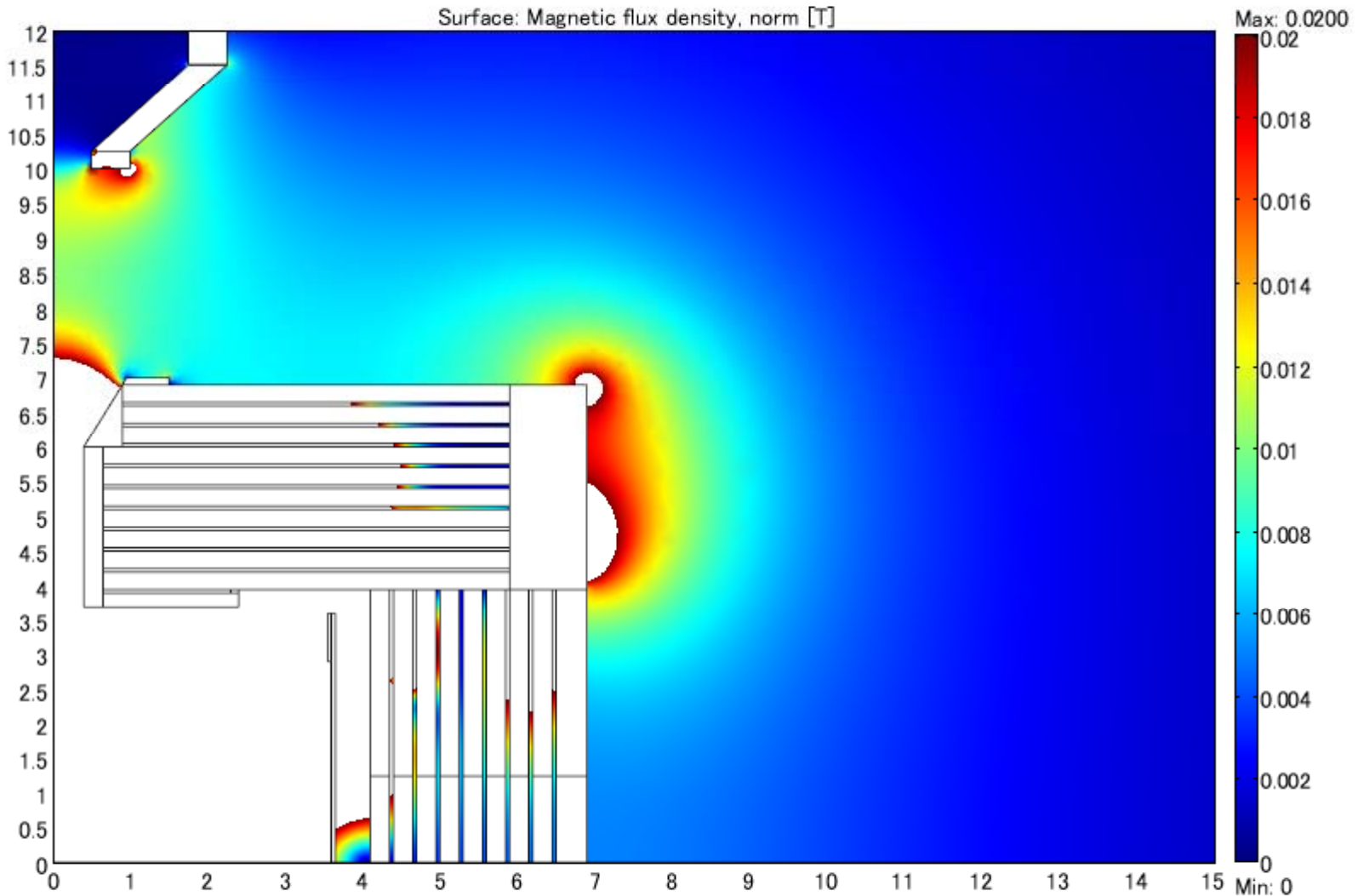
# GLDc



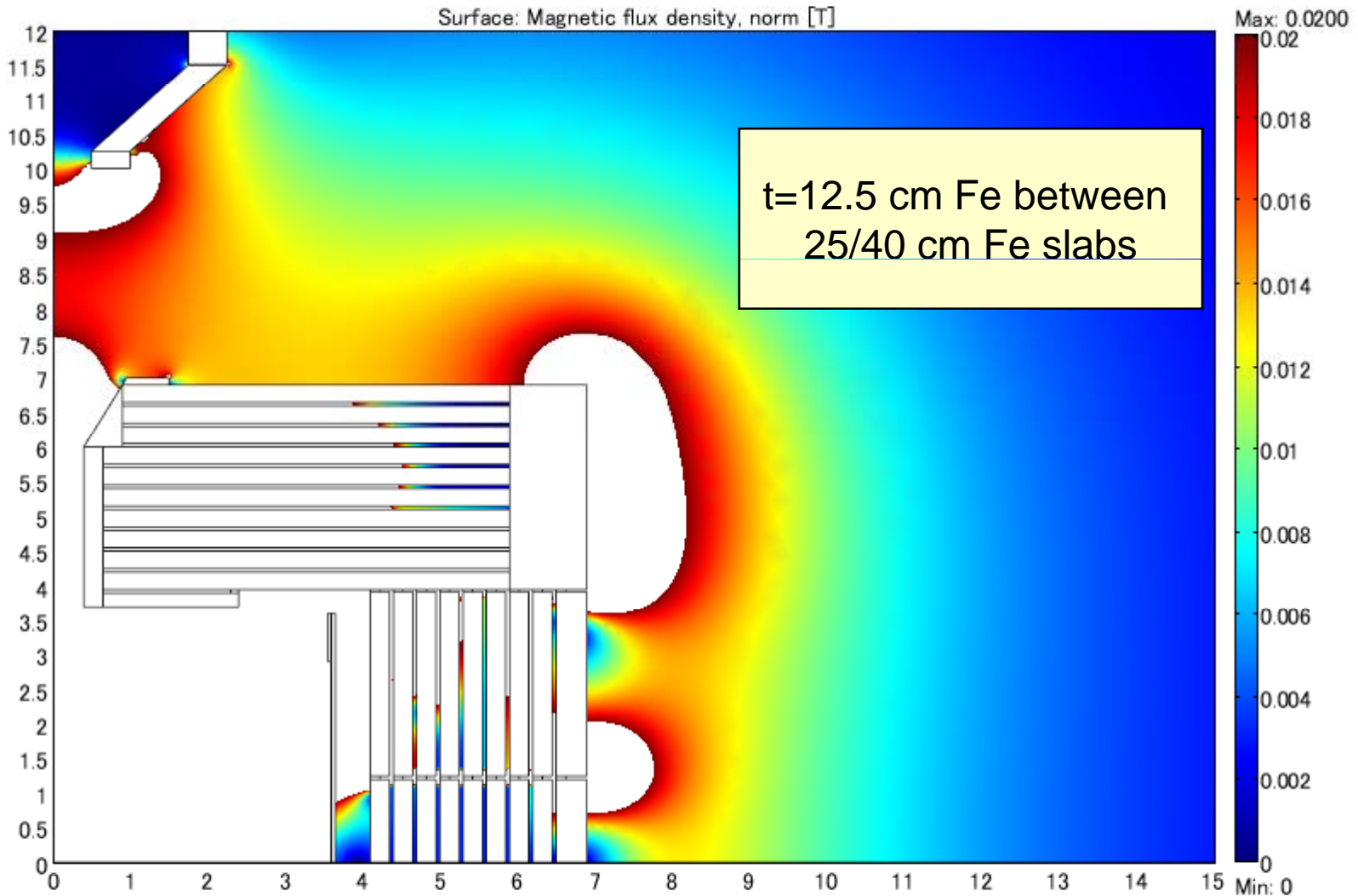
# Without MUO gap



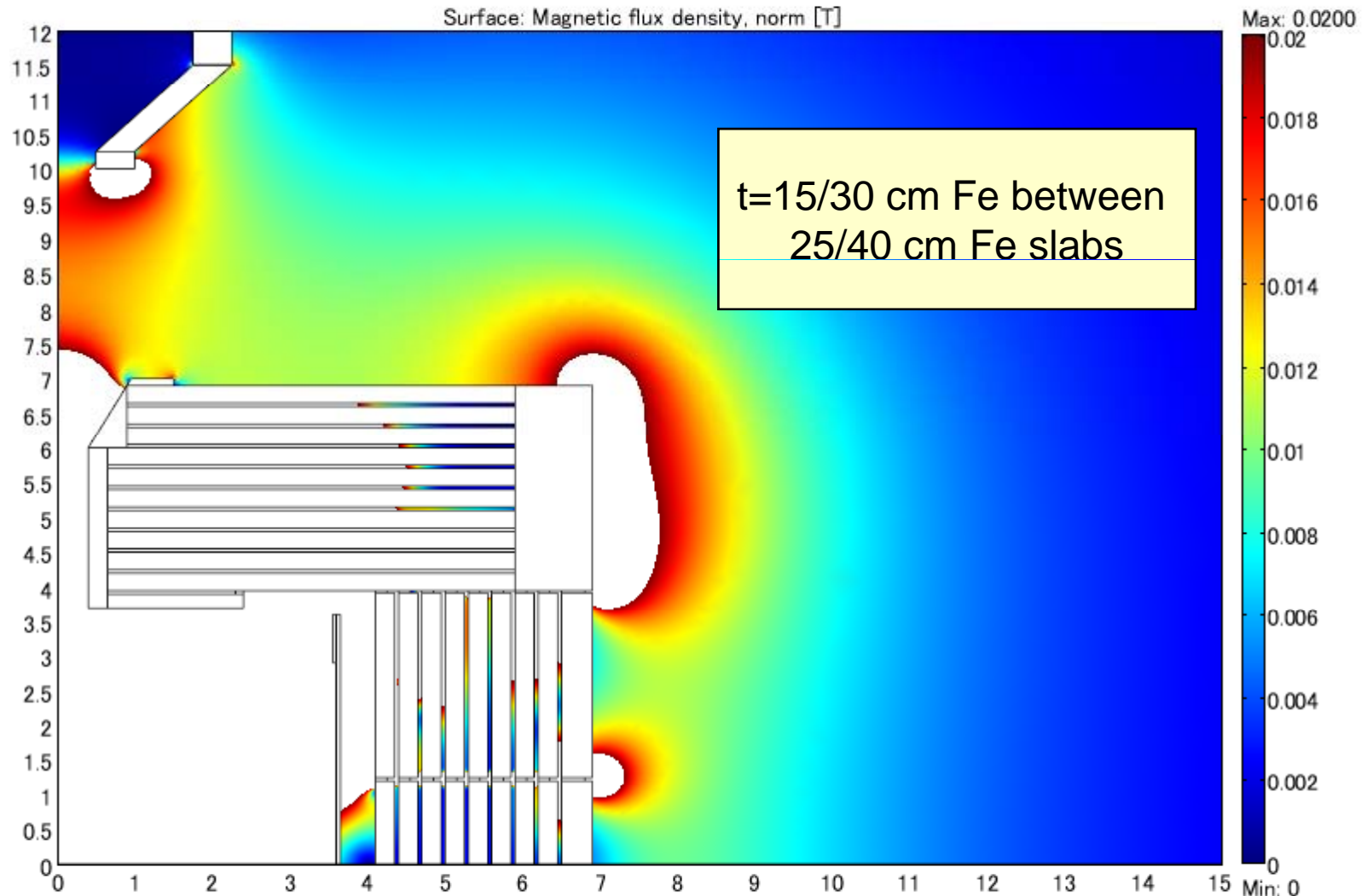
# With no gap between rings



# Gap partially filled with Fe



# Gap partially filled with Fe



# Conclusion

- In order to achieve the requirement for the stray field of  $<200 \text{ G}$  at  $R > R_{\text{det}} + 0.5\text{m}$ ,
  - Much more Fe should be usedor
  - Gaps between rings should be partially ( $>50\%$ ) filled with Fe