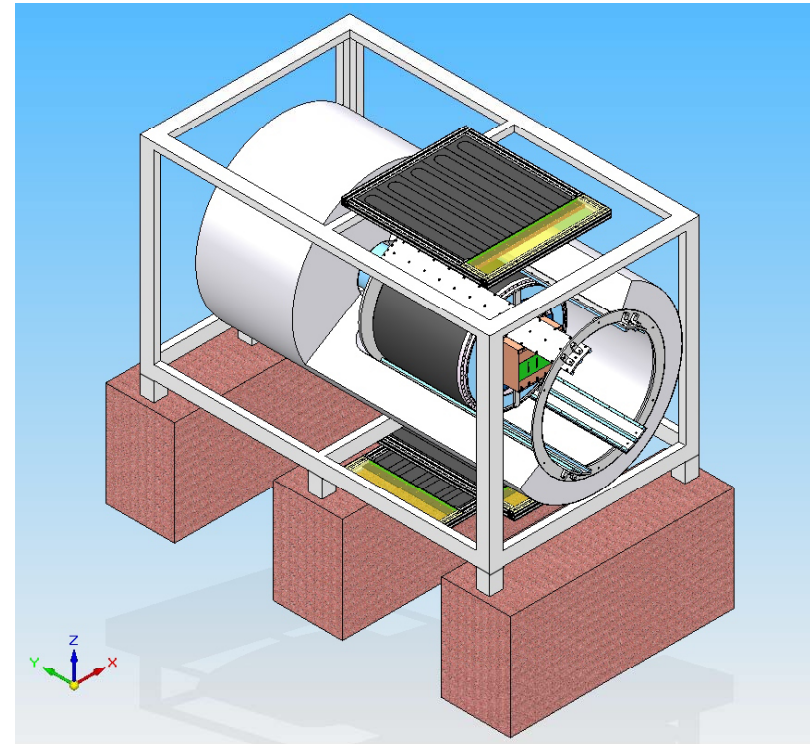




LP cosmic Trigger

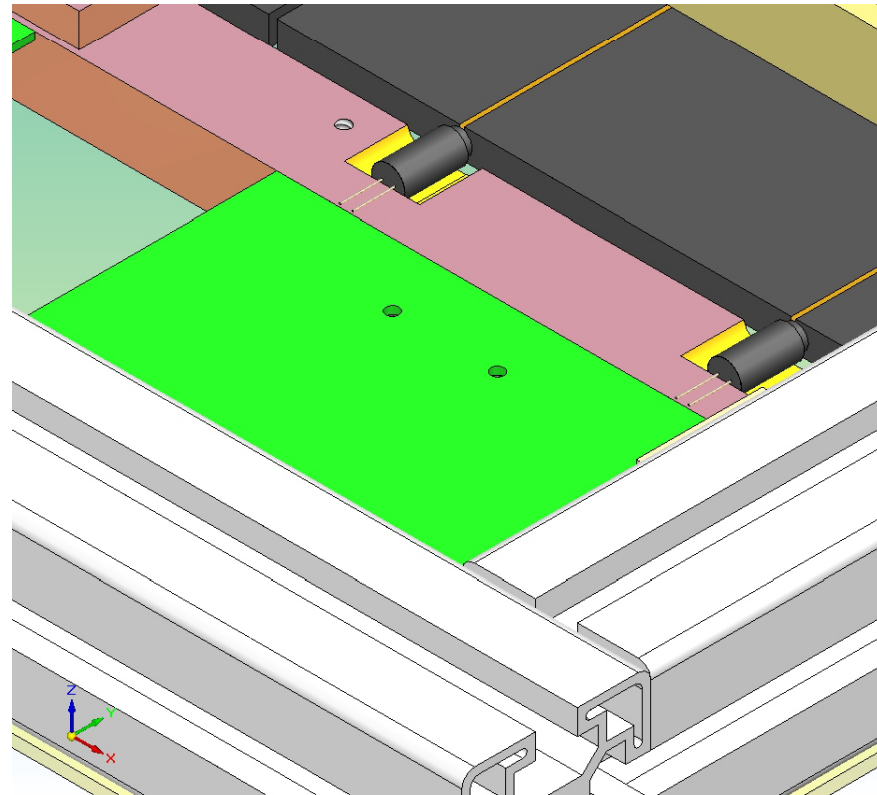
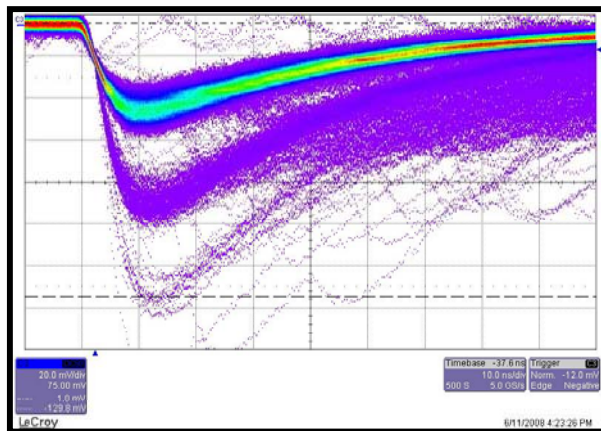
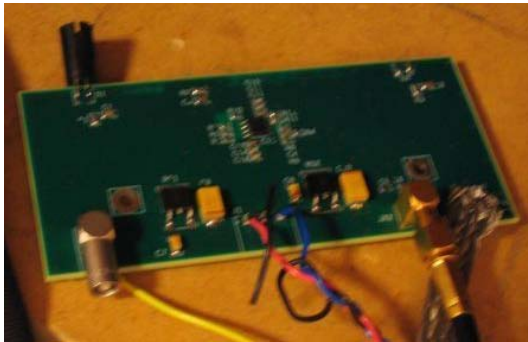


Th. Chaminade, P. Colas, K. Dehmelt, M. Karolak, G. De
Lentdecker, S. Hervé, X. Janssen, D. Jourde, Y. Kato, H.
Kuroiwa, Y. Kudenko, T. Matsuda, F. Pierre, J.M. Reymond,
M. Riallot, F. Senée, S. Turnbull

List of all missing items ready (F. Senée). Last round of orders these days, if necessary. (includes thermo-control cards)

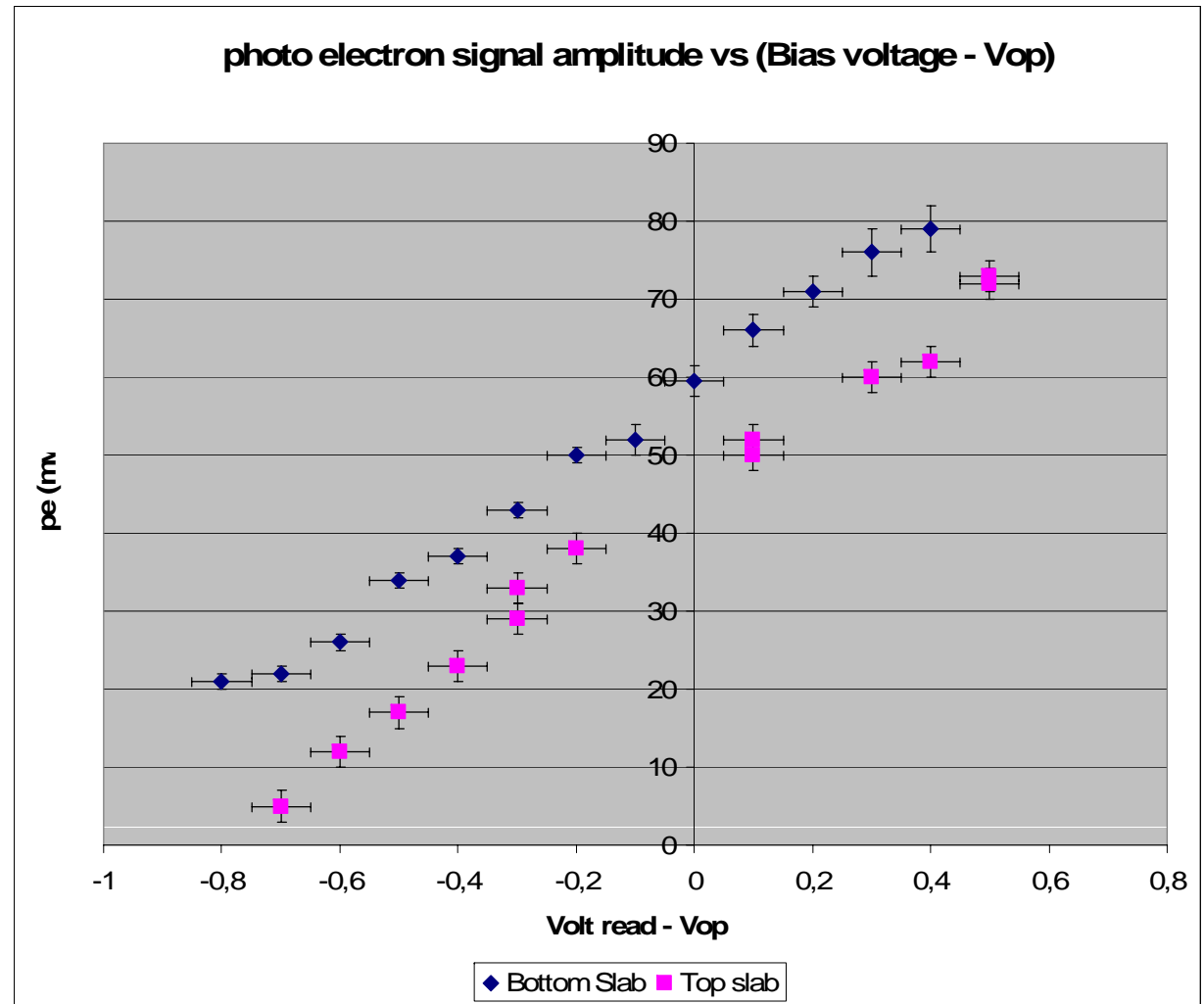
Mechanics delivery due to June 24 (advanced by 2 days to help meeting realistic deadlines).

All 15 amplifier cards received. 2 tested.

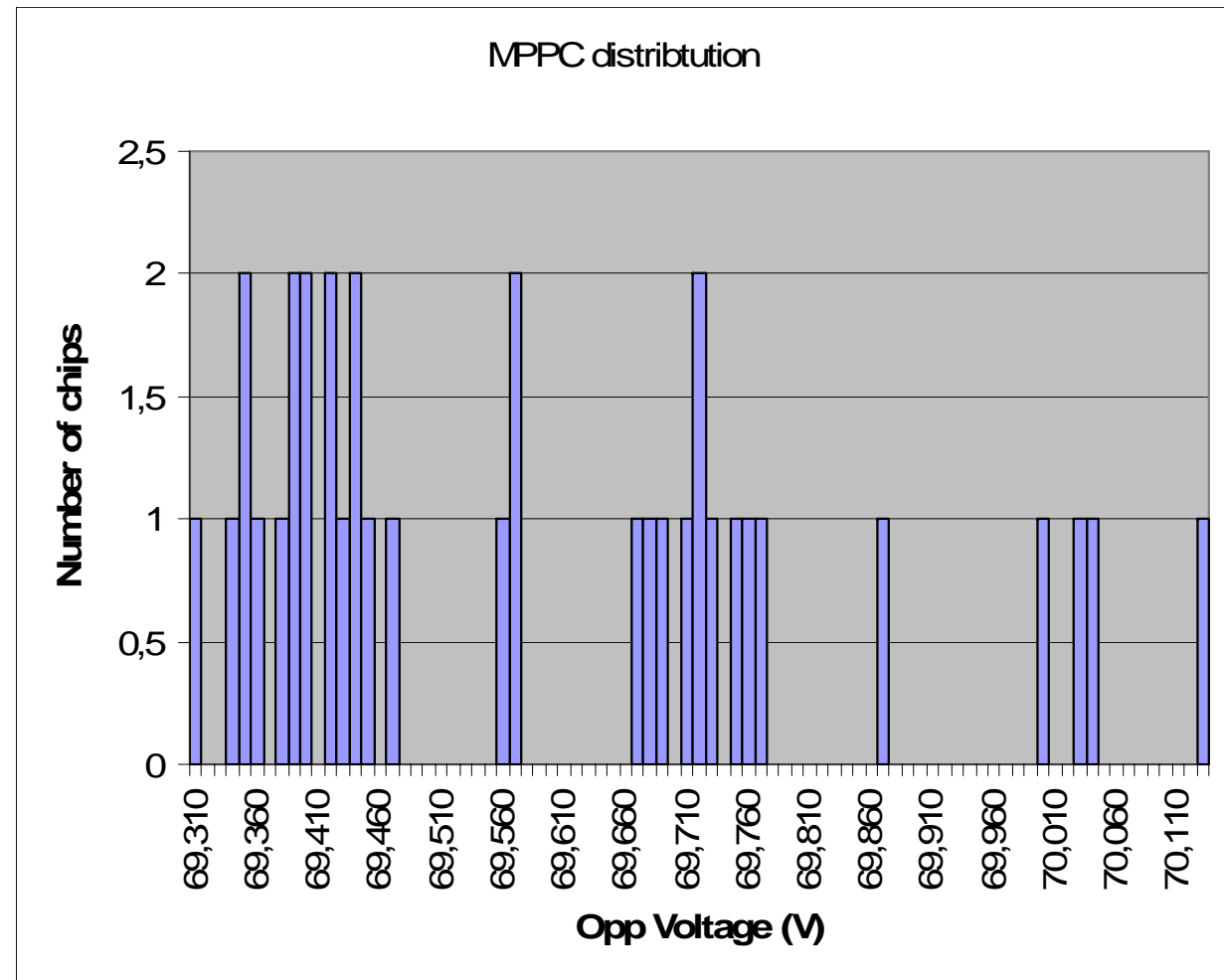


Characterisation and tests in progress

(T. Chaminade, PC, M. Karolak, S. Turnbull)



We will have to sort the MPPCs in 3 batches with similar operation voltage, as we have one supply per slot



Look at coincidences of 2 superimposed slabs.

Rate of random coincidences small.

Trigger rate 22±1Hz

Expect $87 \times 16 / 60 = 23.2$ Hz (taking 1/cm²/min)

-> IT WORKS!!!

