

# Influence of Magnetizable Material on PCMAG: a First Calculation

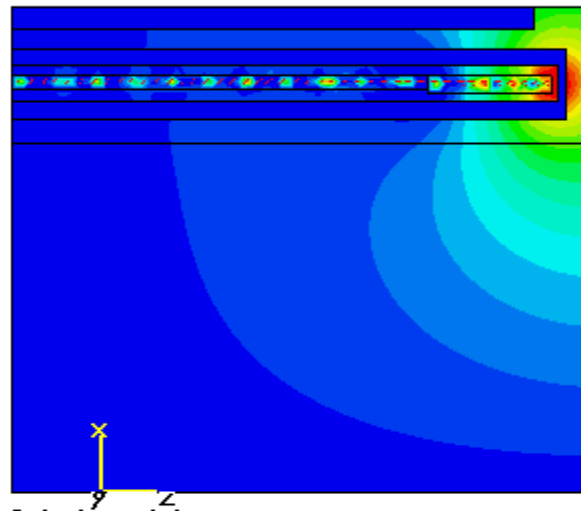
Klaus Zenker

WP-Meeting #63

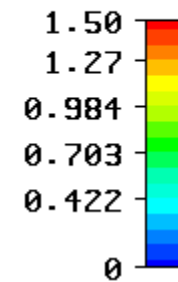
30-July-2008

# $B_x$ -Field of PCMAG

Clamp to range: (Min: 0 / Max: 1.5)



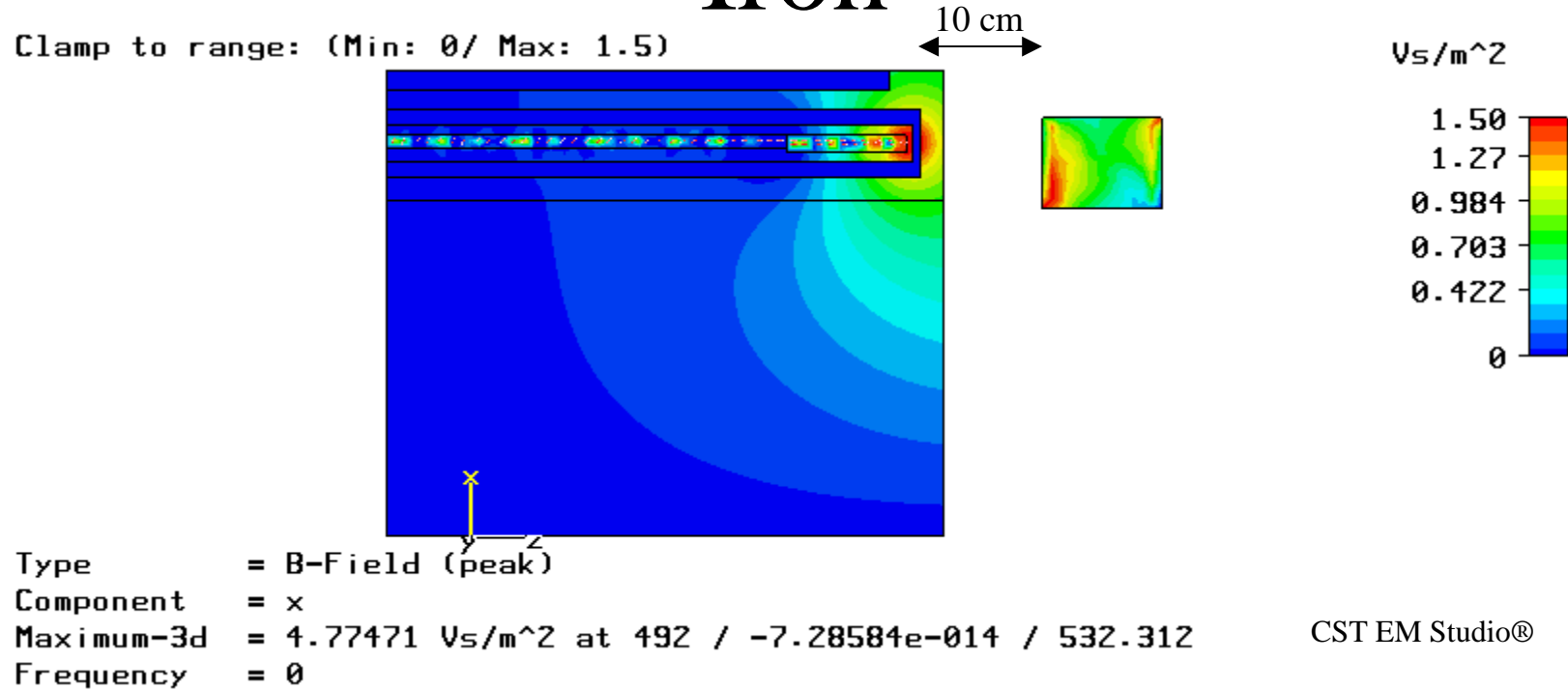
$Vs/m^2$



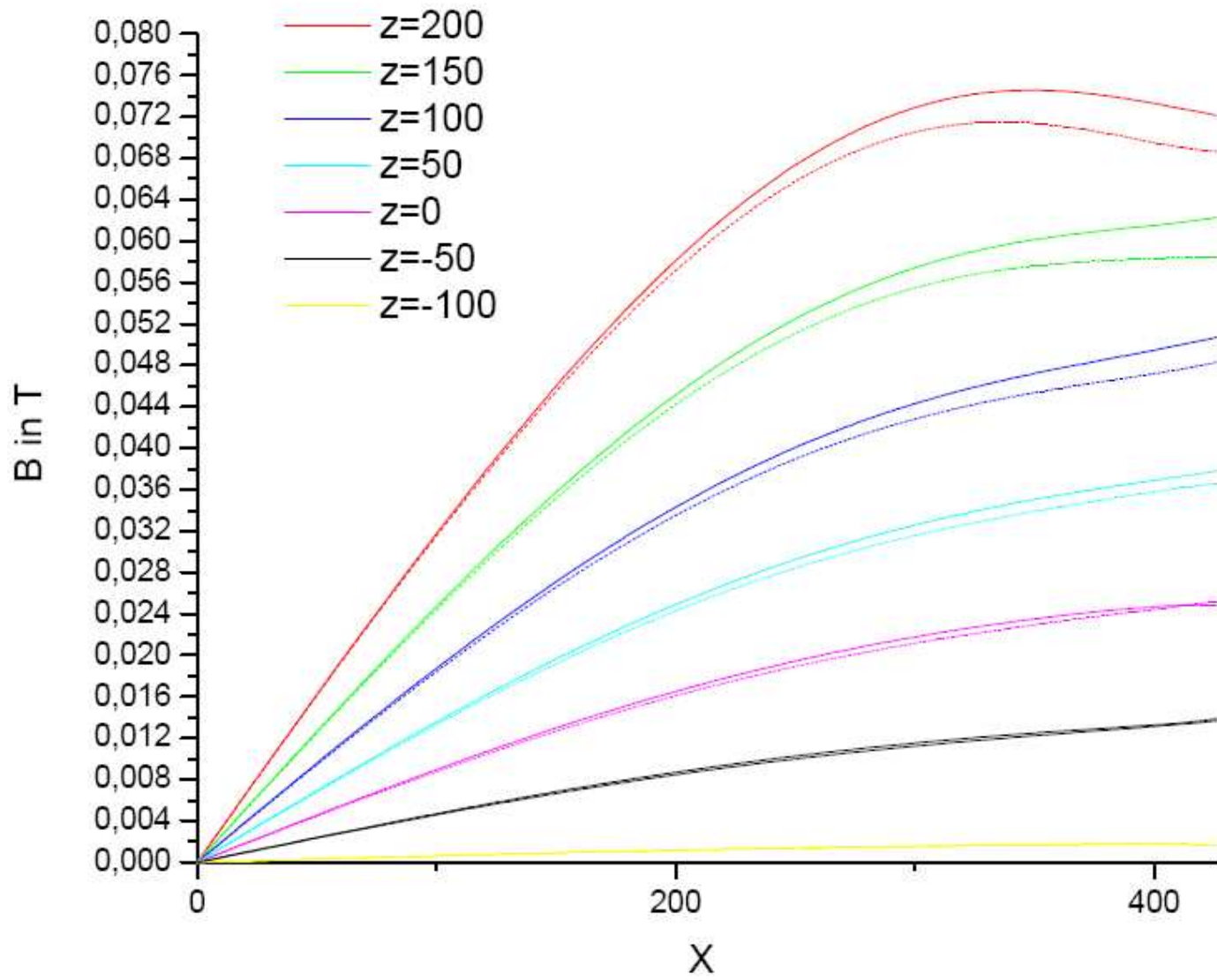
Type = B-Field (peak)  
Component = x  
Maximum-3d = 4.97739  $Vs/m^2$  at 492 /  $-7.28584e-014$  / 531.949  
Frequency = 0

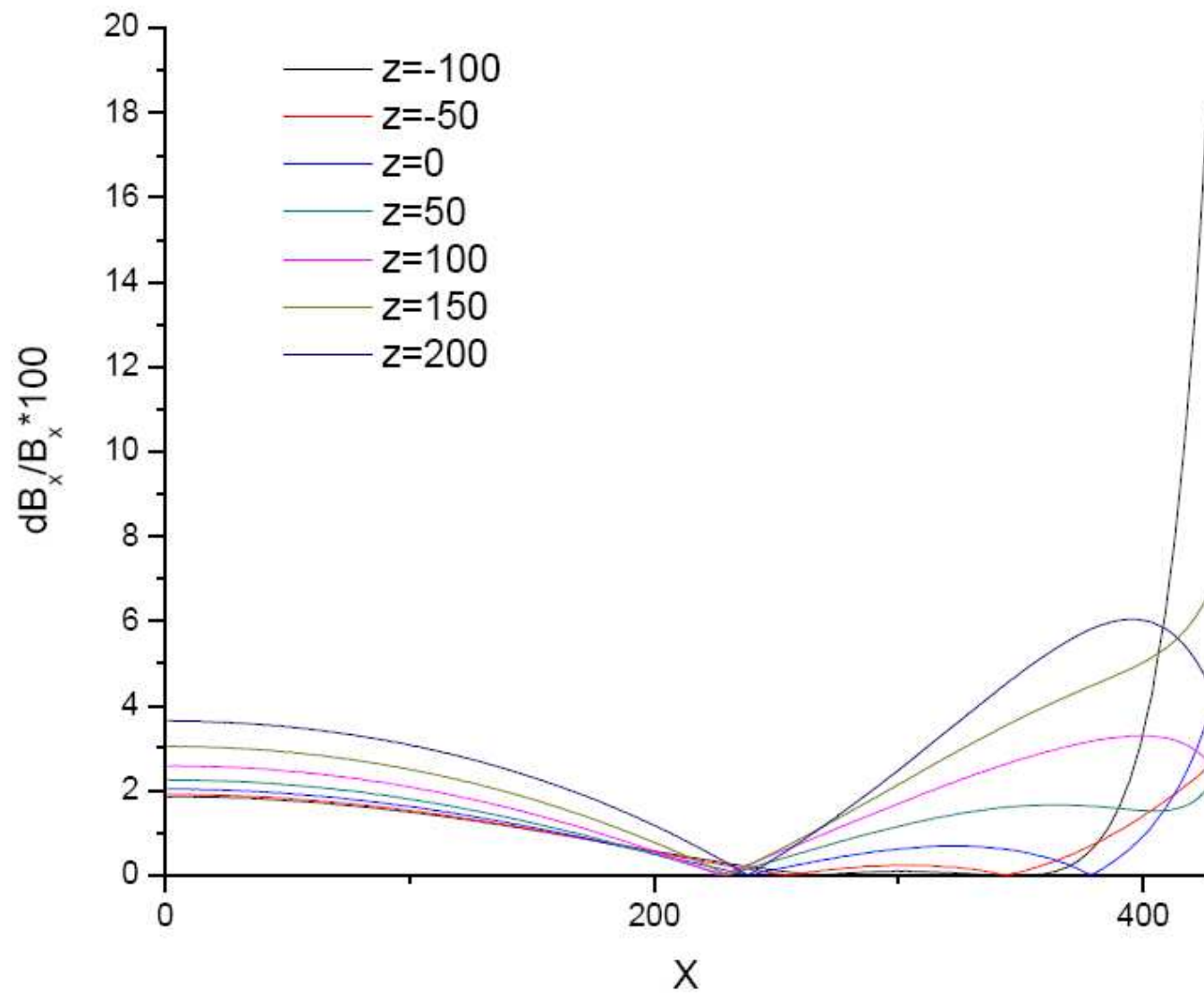
CST EM Studio®

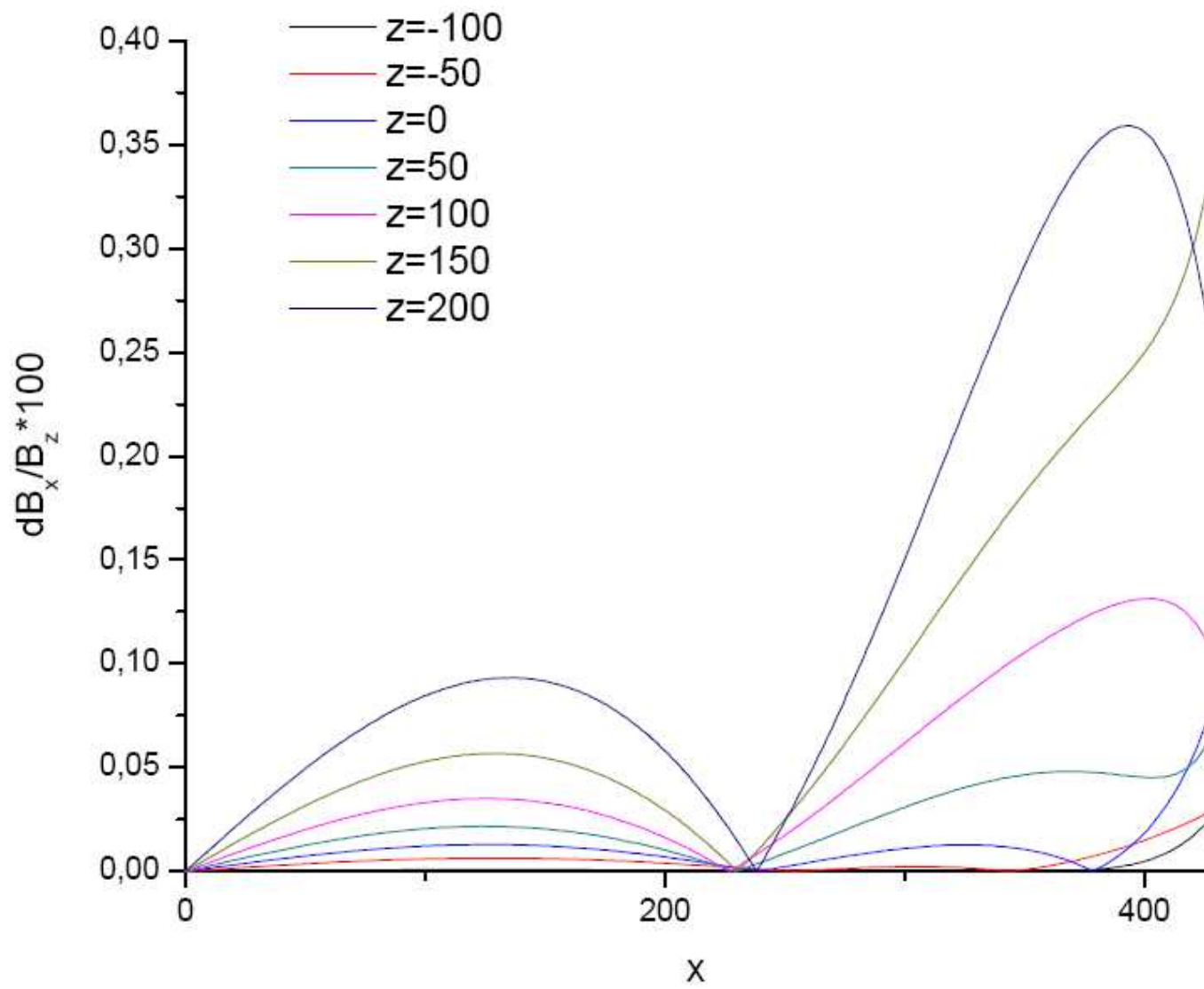
# $B_x$ -Field of PCMAG + Massive Iron



$B_x$

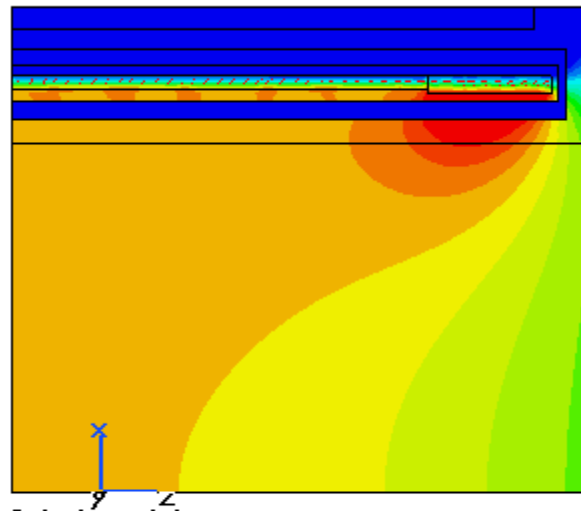




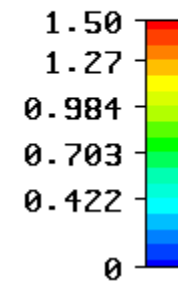


# B<sub>z</sub>-Field of PCMAG

Clamp to range: (Min: 0 / Max: 1.5)



Vs/m<sup>2</sup>

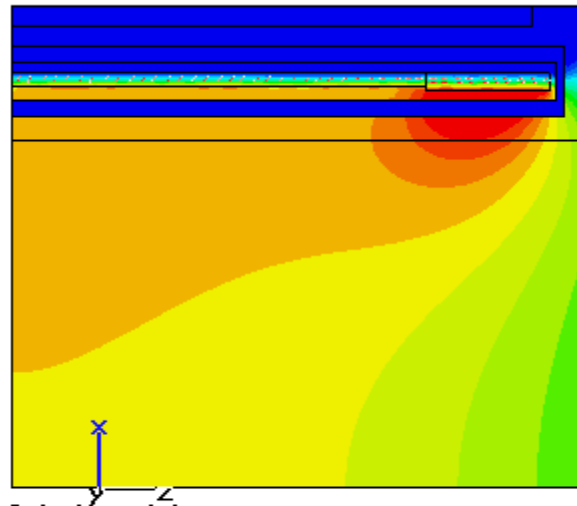


Type = B-Field (peak)  
Component = z  
Maximum-3d = 4.97739 Vs/m<sup>2</sup> at 492 / -7.28584e-014 / 531.949  
Frequency = 0

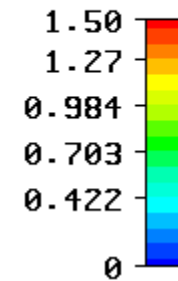
CST EM Studio®

# $B_z$ -Field of PCMAG + Massive Iron

Clamp to range: (Min: 0 / Max: 1.5)



$V_s/m^2$



Type = B-Field (peak)  
Component = z  
Maximum-3d = 4.77471  $V_s/m^2$  at 492 /  $-7.28584e-014$  / 532.312  
Frequency = 0

CST EM Studio®



$B_z$

