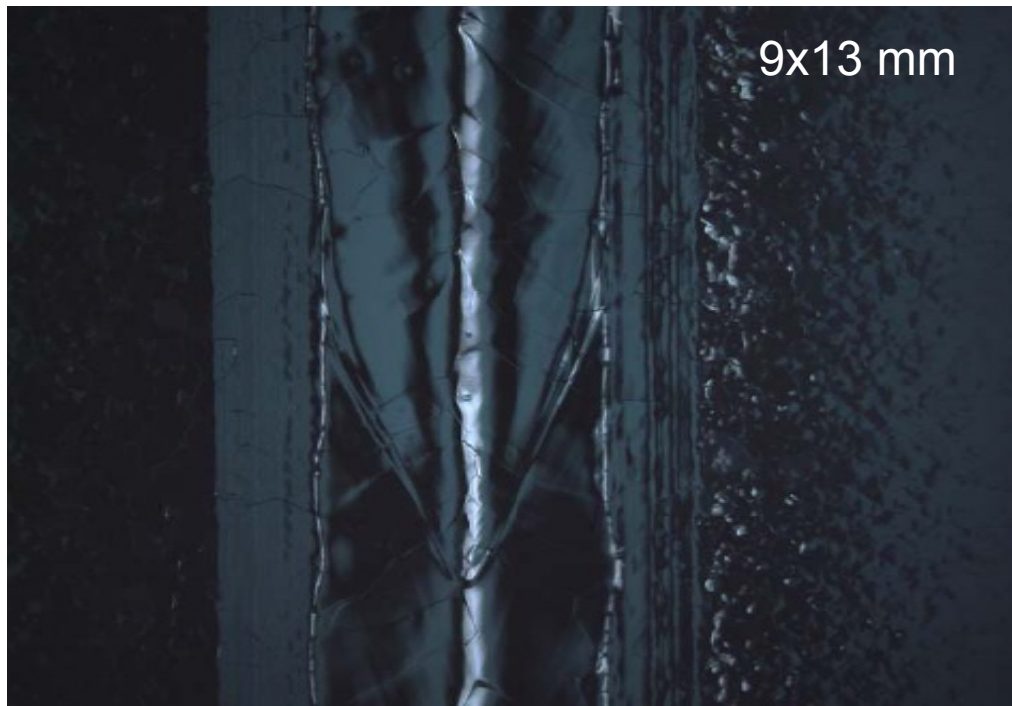


Optical Inspection at DESY

- Received Kyoto-camera from KEK 3 weeks ago
- Set-up of new camera with old handling system
- Construction of new support structure for inspection of cavities with and without tank

Optical Inspection at DESY

Welding transition at equator in cell #2 of Z111



KEK: picture at 43 deg

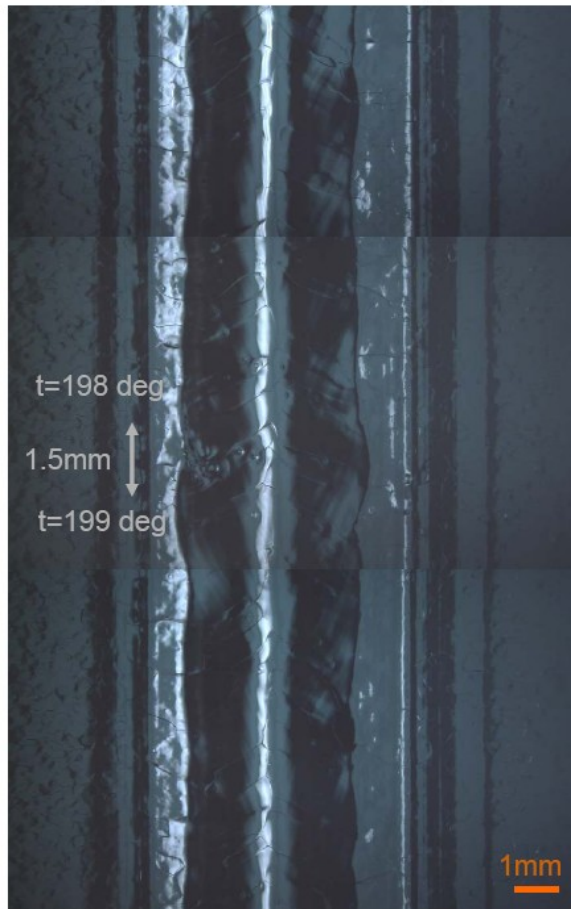


DESY: picture at 42 deg

Optical inspection at DESY

Z111: Quench-position found
by T-map in cell #6

#6 equator, $t=193 \sim 204$ deg



KEK

2008/09/16



DESY
marking at
198 deg

ILC S0 telephone meeting

Optical Inspection at DESY

- Take opportunity of numerous cavities around due to preparation for XFEL and improved resolution of Kyoto-camera
- Compare optical inspection with results from vertical test and t-map