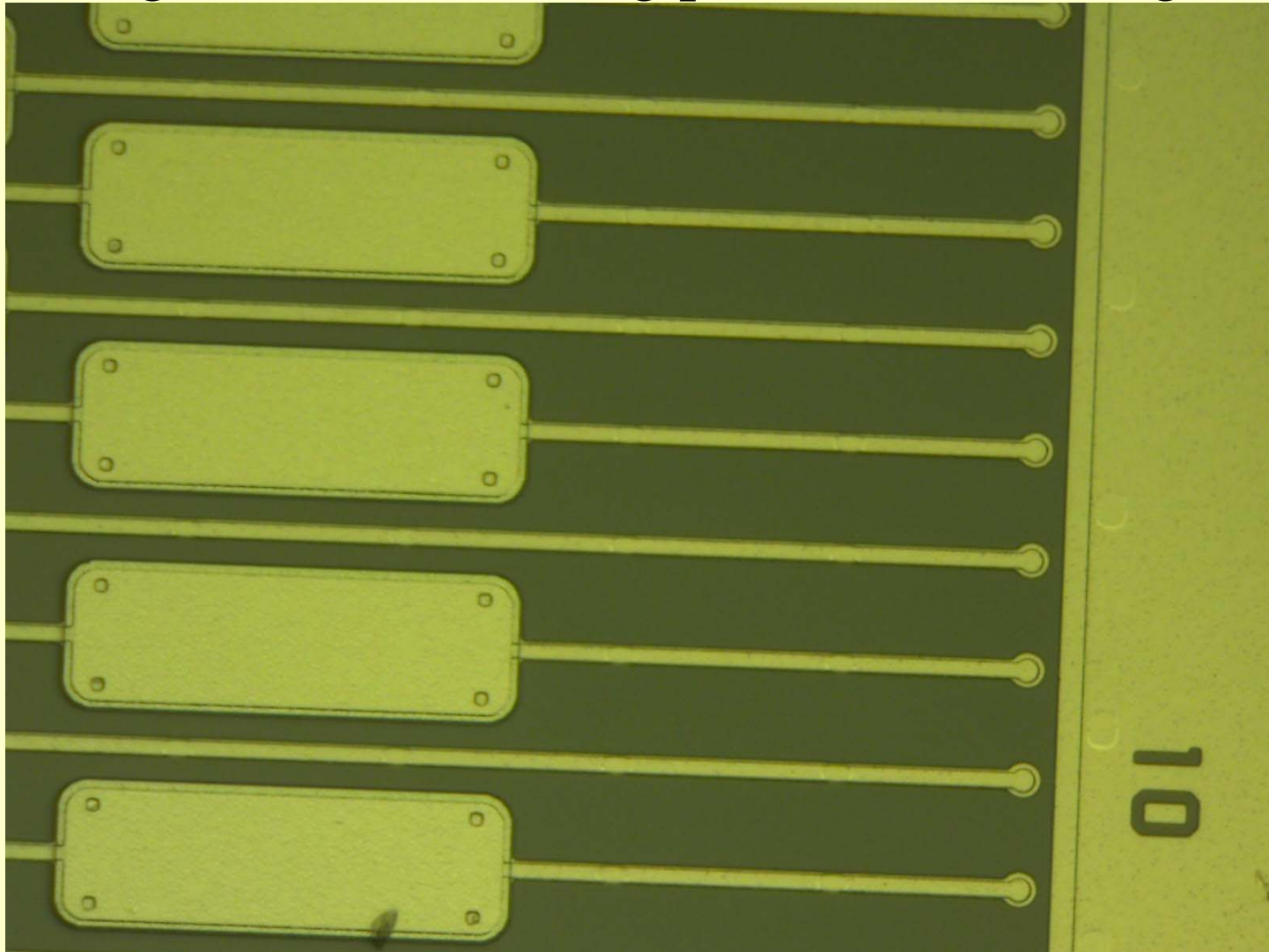
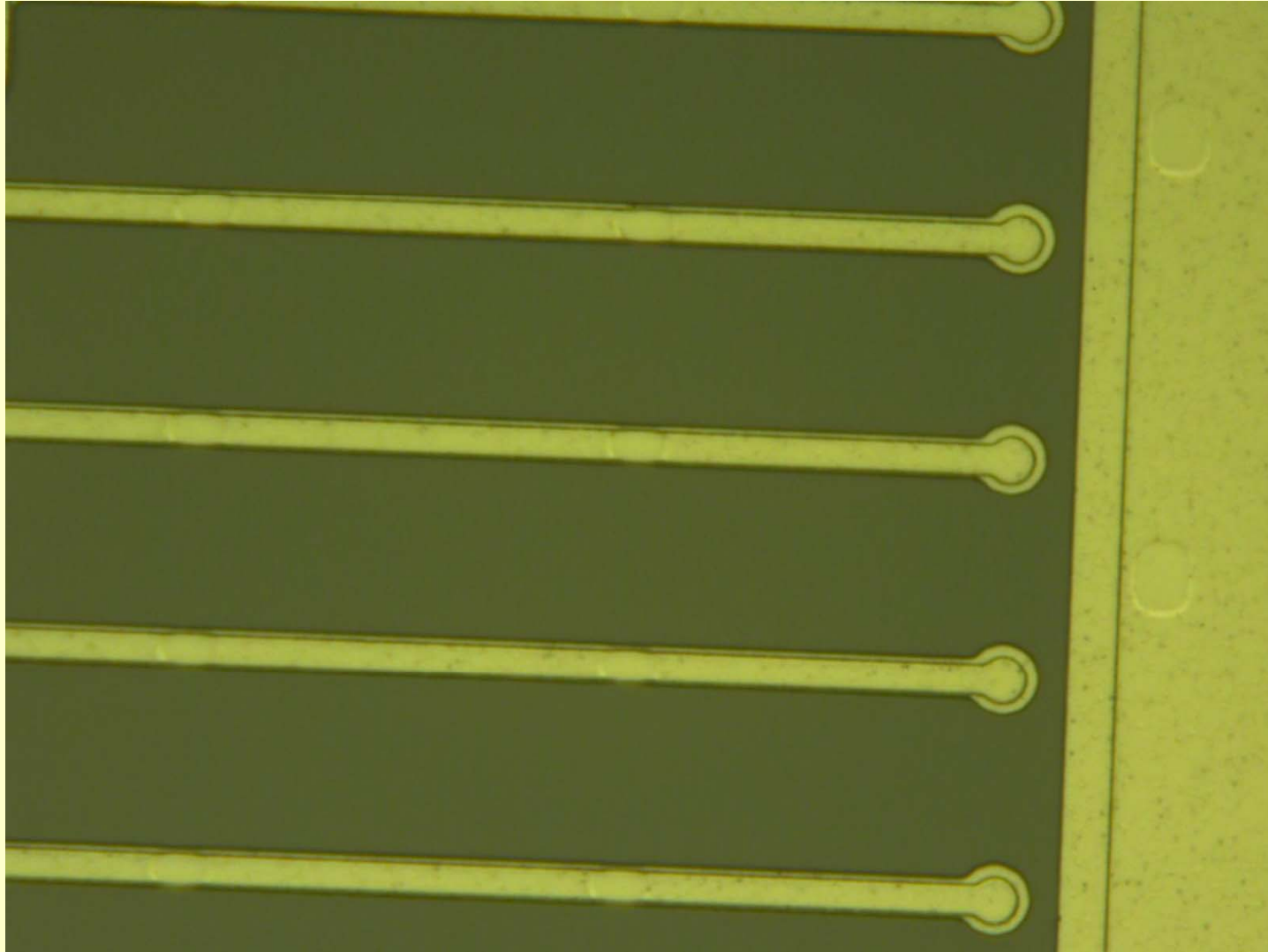


First Look at SiD Charge Division Sensors at SCIPP

Magnification showing pads and “bias ring”



Higher Magnification showing apparent “vias” at regular intervals along length of strip



September 2, 2008

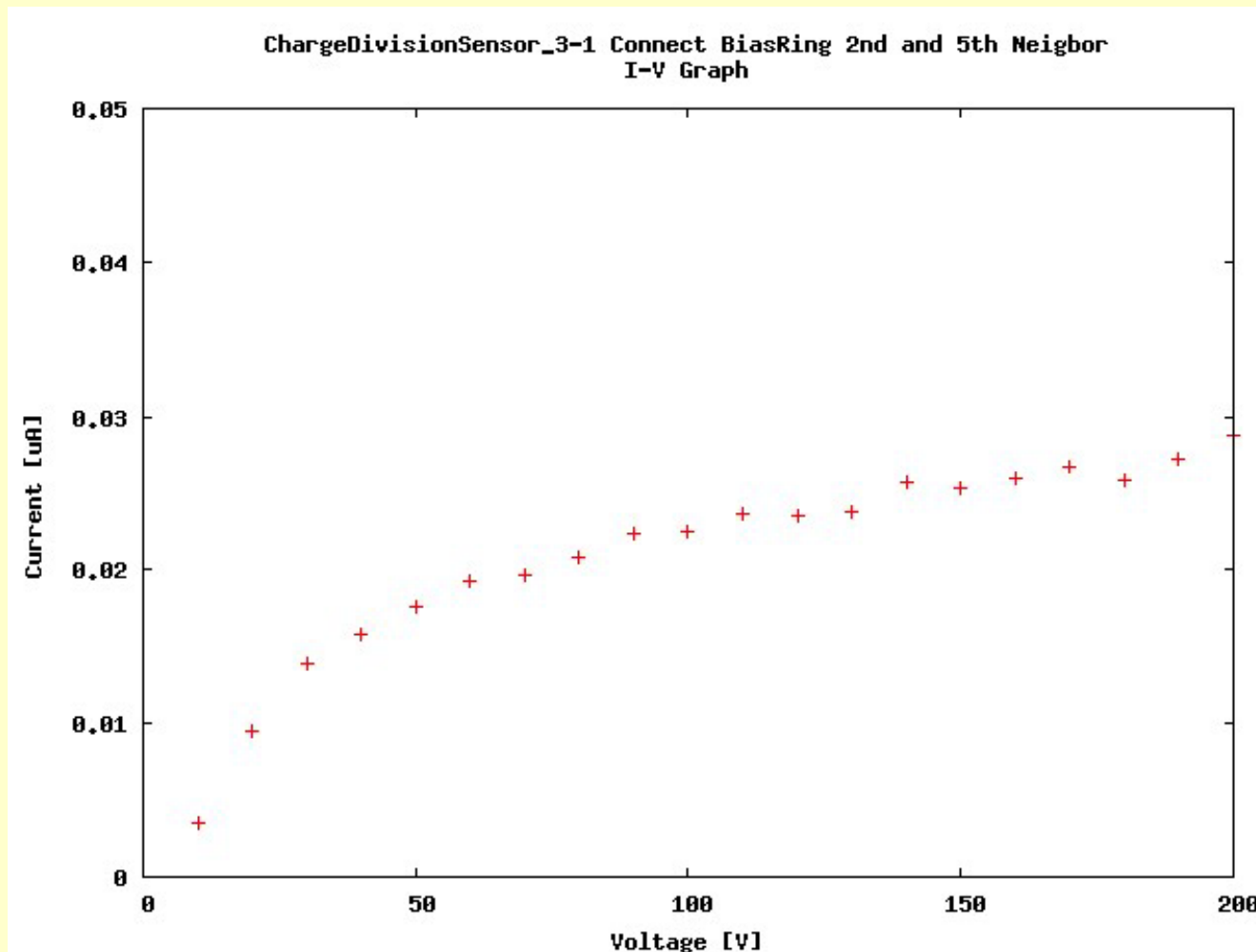
IV and CV curves on Charge Division Sensors

Setup:

-Backside H.V. (High Pot)

-GND (Low Pot) on strip zero, next to bias and guard ring

-GND (Low Pot) on Bias Ring, and Strip's 2nd and 5th Neighbor

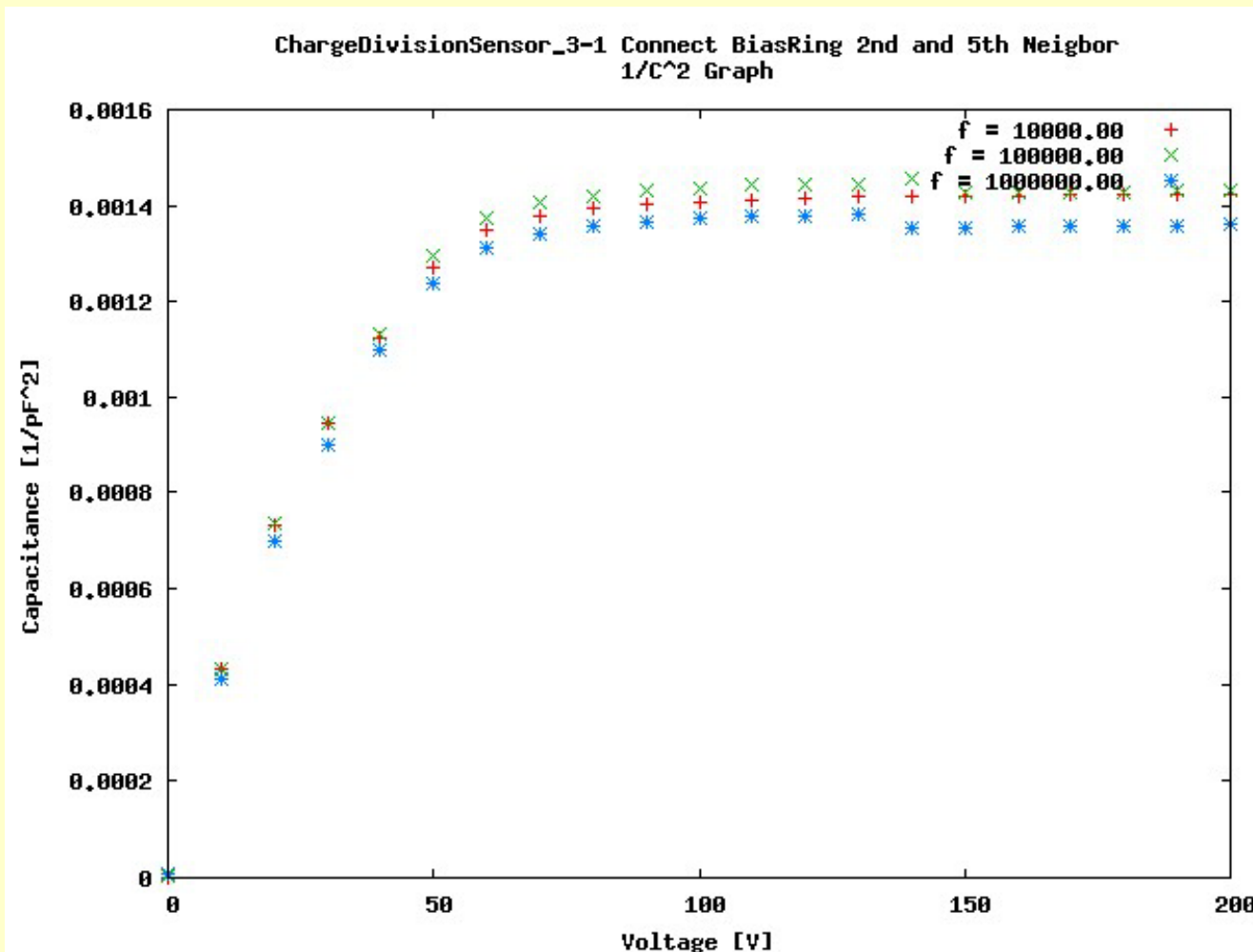


September 2, 2008

IV and CV curves on Charge Division Sensors

Setup:

- Backside H.V. (High Pot)
- GND (Low Pot) on strip zero, next to bias and guard ring
- GND (Low Pot) on Bias Ring, and Strip's 2nd and 5th Neighbor**

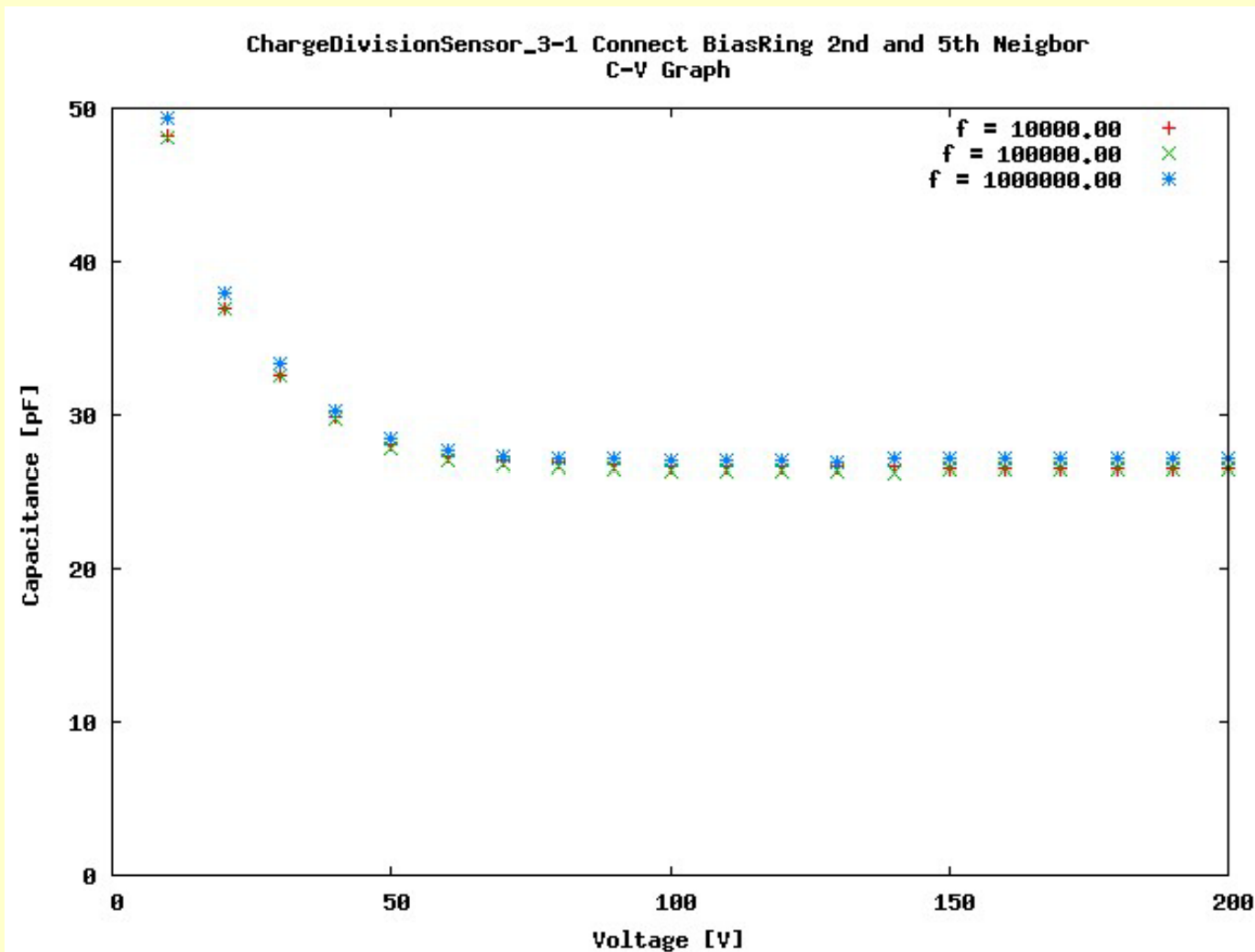


September 2, 2008

IV and CV curves on Charge Division Sensors

Setup:

- Backside H.V. (High Pot)
- GND (Low Pot) on strip zero, next to bias and guard ring
- GND (Low Pot) on Bias Ring, and Strip's 2nd and 5th Neighbor**

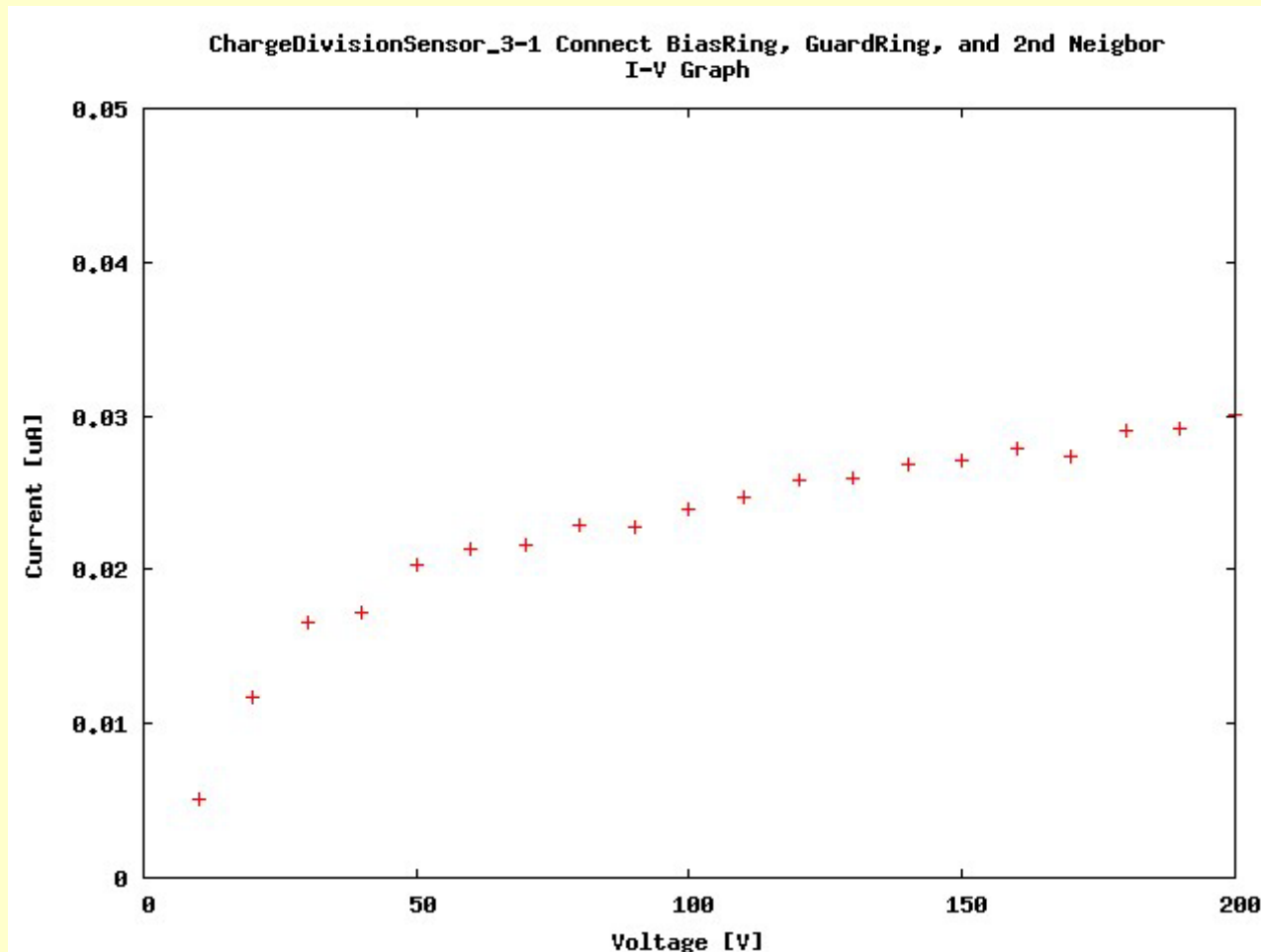


September 2, 2008

IV and CV curves on Charge Division Sensors

Setup:

- Backside H.V. (High Pot)
- GND (Low Pot) on strip zero, next to bias and guard ring
- GND (Low Pot) on Bias Ring, Guard Ring, and 2nd Neighbor**

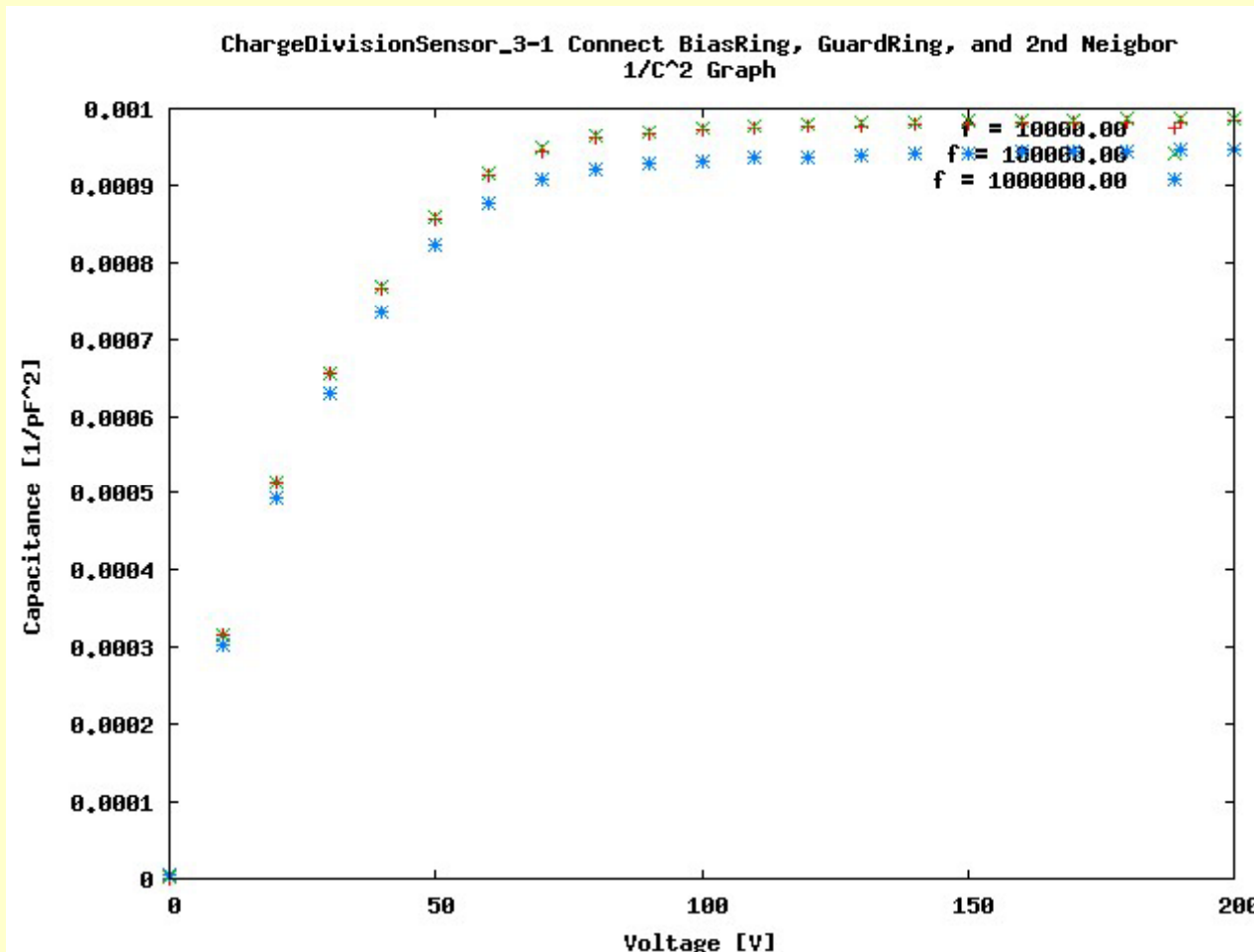


September 2, 2008

IV and CV curves on Charge Division Sensors

Setup:

- Backside H.V. (High Pot)
- GND (Low Pot) on strip zero, next to bias and guard ring
- GND (Low Pot) on Bias Ring, Guard Ring, and 2nd Neighbor

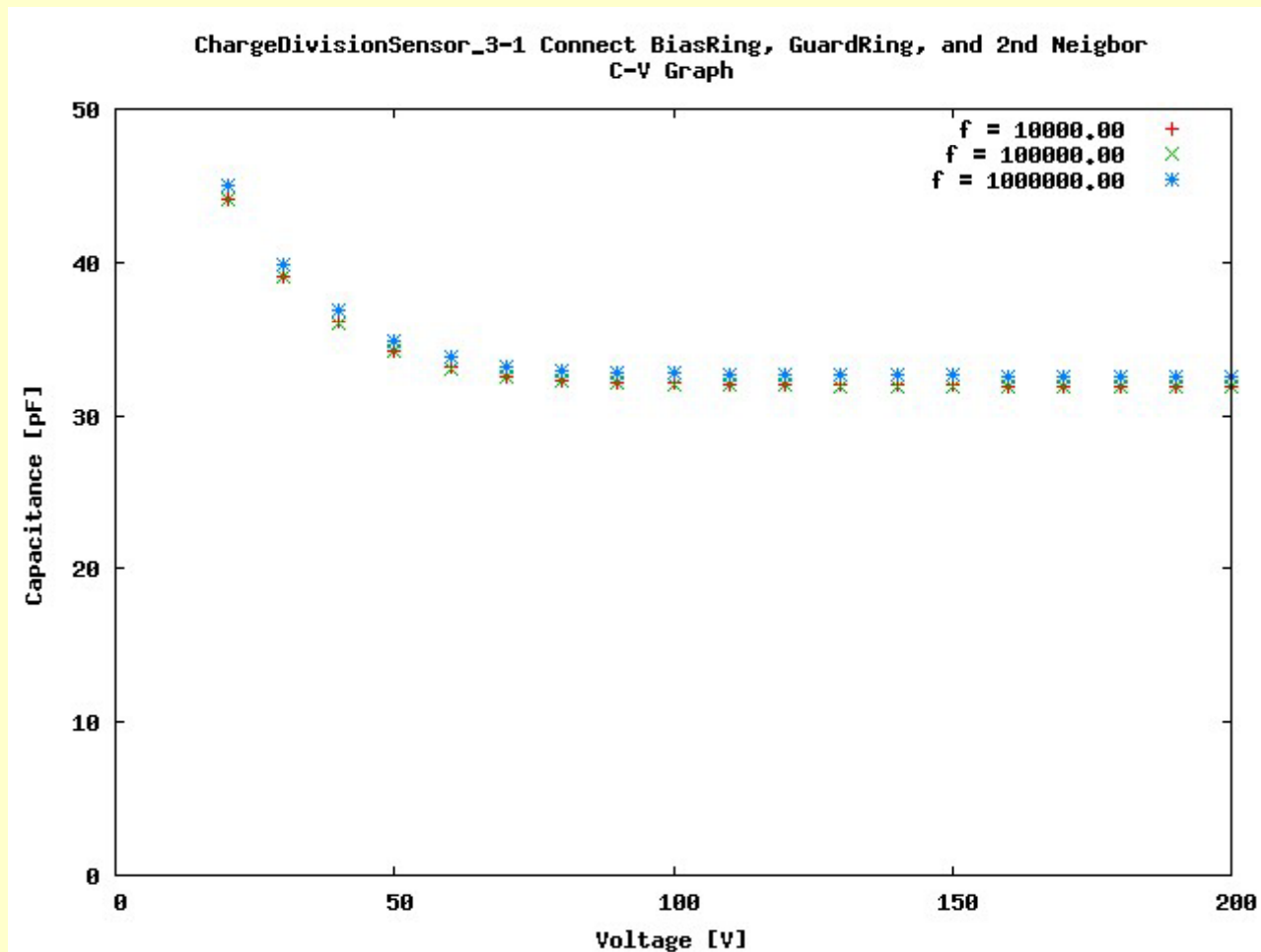


September 2, 2008

IV and CV curves on Charge Division Sensors

Setup:

- Backside H.V. (High Pot)
- GND (Low Pot) on strip zero, next to bias and guard ring
- GND (Low Pot) on Bias Ring, Guard Ring, and 2nd Neighbor**



September 2, 2008

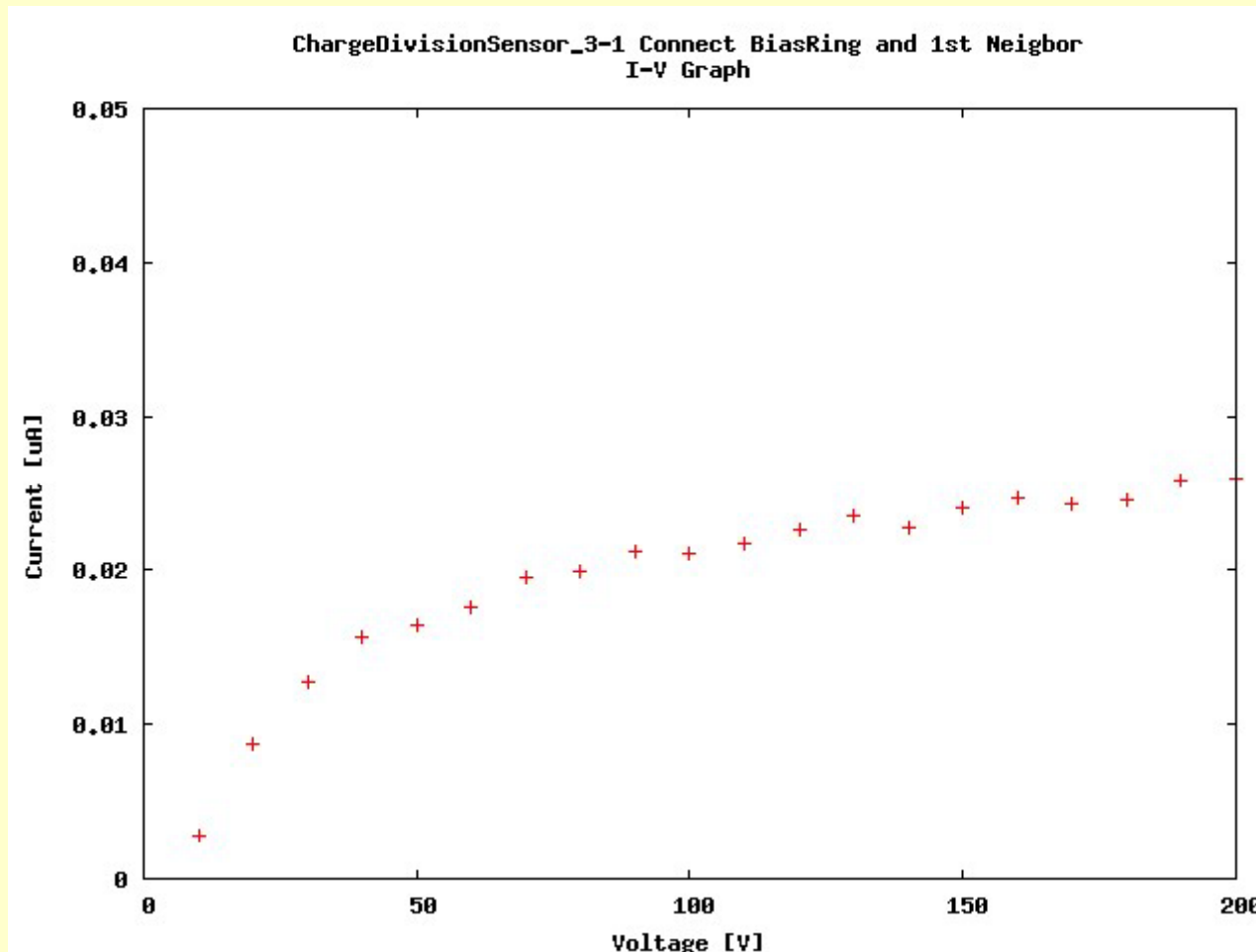
IV and CV curves on Charge Division Sensors

Setup:

-Backside H.V. (High Pot)

-GND (Low Pot) on strip zero, next to bias and guard ring

-GND (Low Pot) on Bias Ring, and Strip's 1st Neighbor

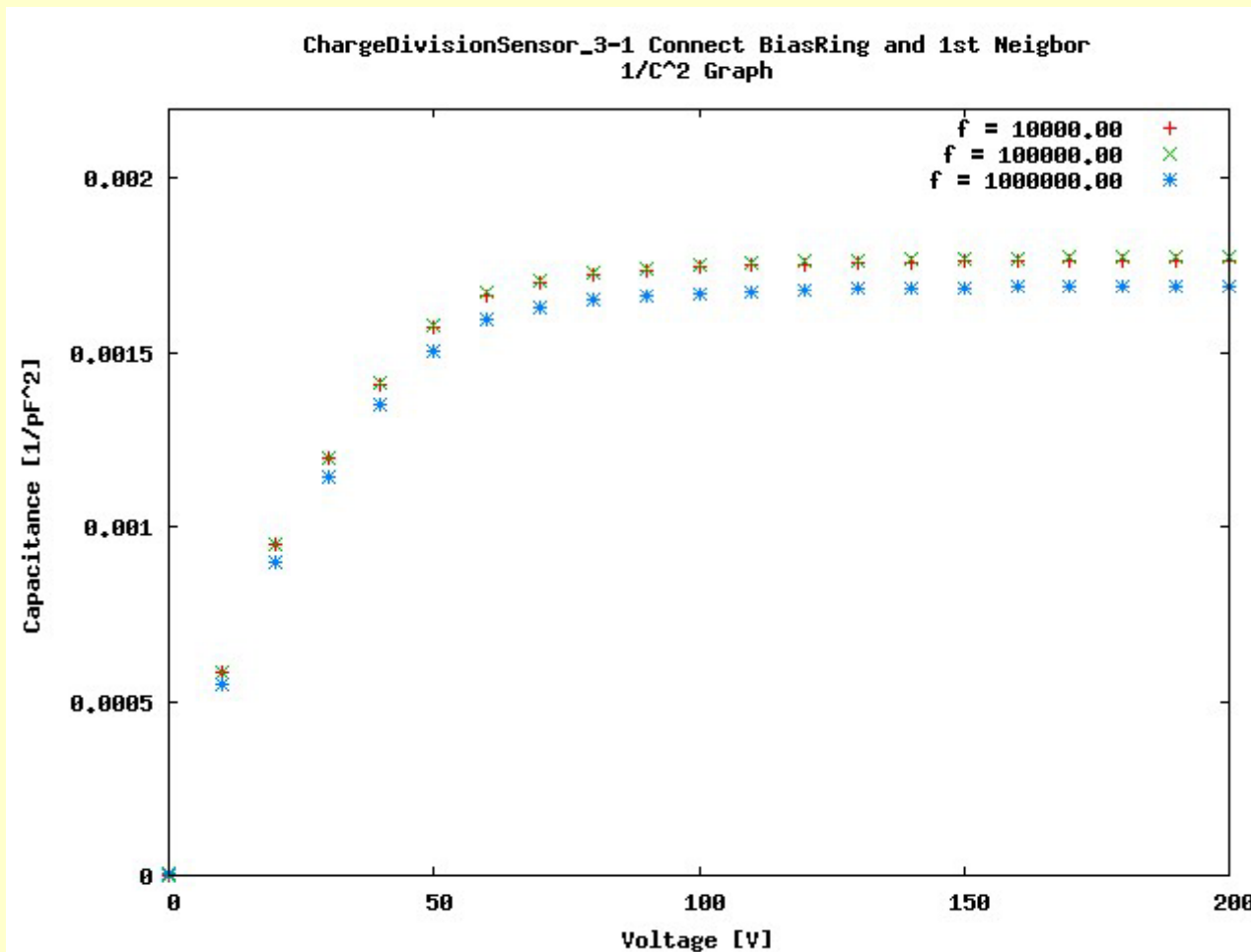


September 2, 2008

IV and CV curves on Charge Division Sensors

Setup:

- Backside H.V. (High Pot)
- GND (Low Pot) on strip zero, next to bias and guard ring
- GND (Low Pot) on Bias Ring, and Strip's 1st Neighbor



September 2, 2008

IV and CV curves on Charge Division Sensors

Setup:

- Backside H.V. (High Pot)
- GND (Low Pot) on strip zero, next to bias and guard ring
- GND (Low Pot) on Bias Ring, and Strip's 1st Neighbor**

