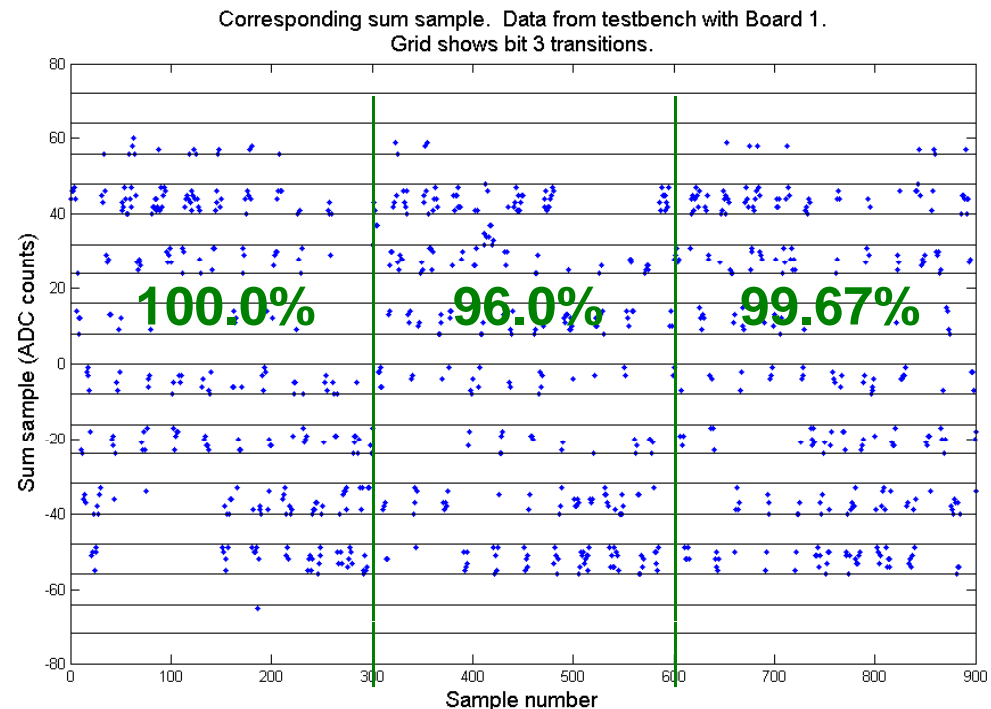


Digital board bench tests

- Using C code to monitor fraction of samples with set bit 3 over RS232
- Sets of 20 contiguous triggers (10 Hz) monitored and used to calculate a percentage
- Each percentage is then from 300 samples taken over 2 seconds

C code test data with board 1:

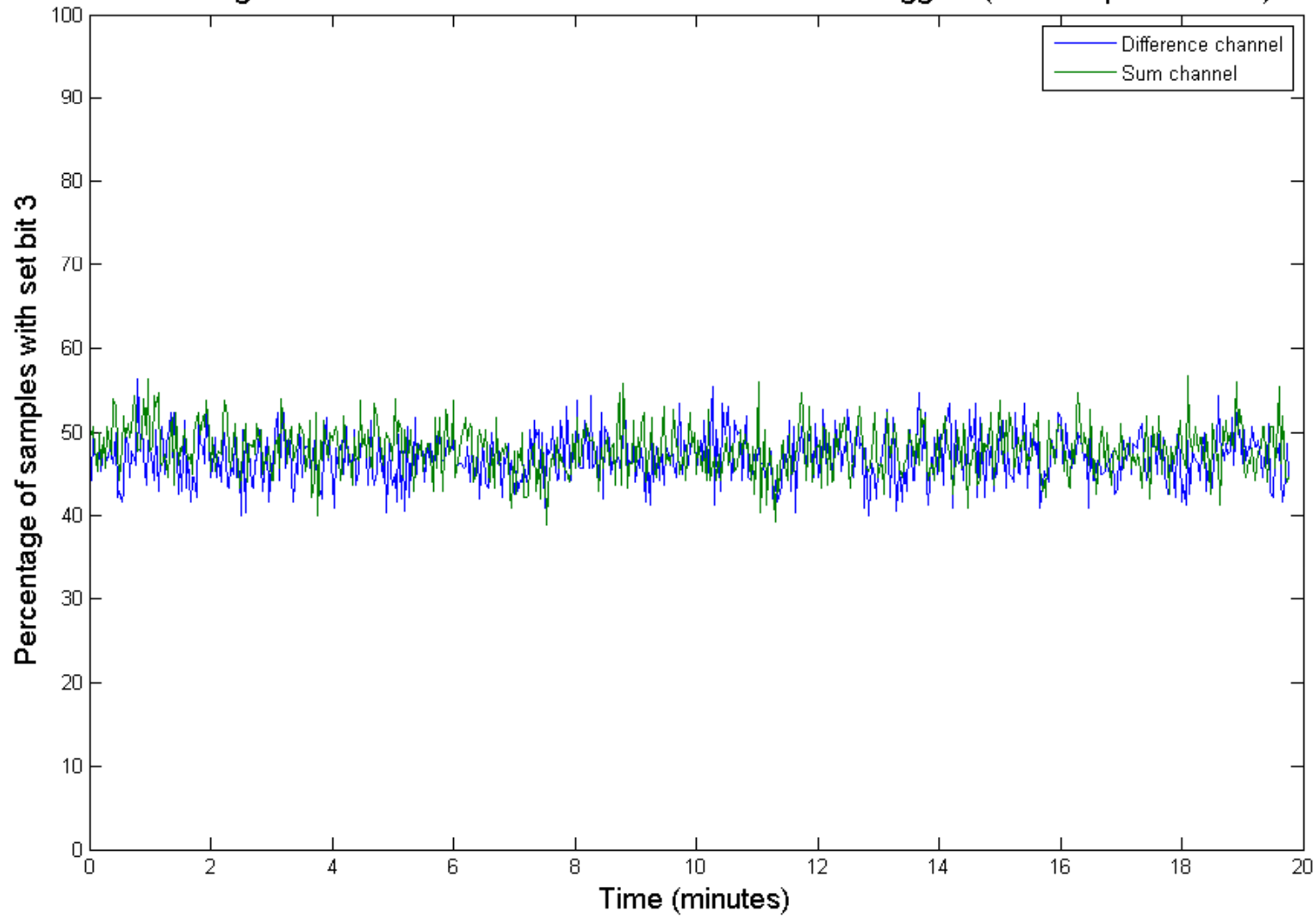
- Percentages confirmed by hand



Board 3

Fraction of samples with bit 3 set. Board 3.

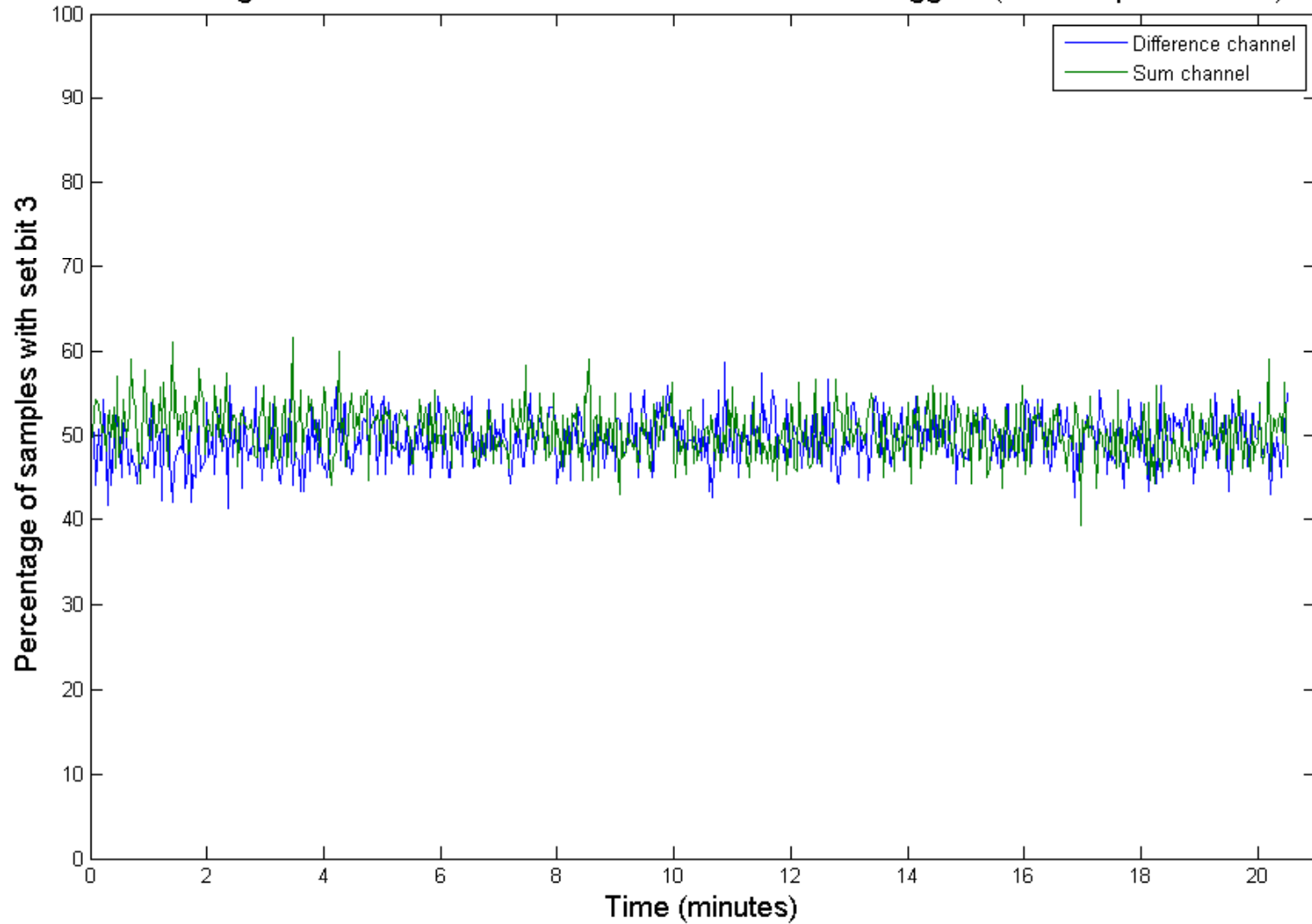
Percentages calculated from sets of 20 consecutive 10 Hz triggers (300 samples over 2s)



Board 4

Fraction of samples with bit 3 set. Board 4.

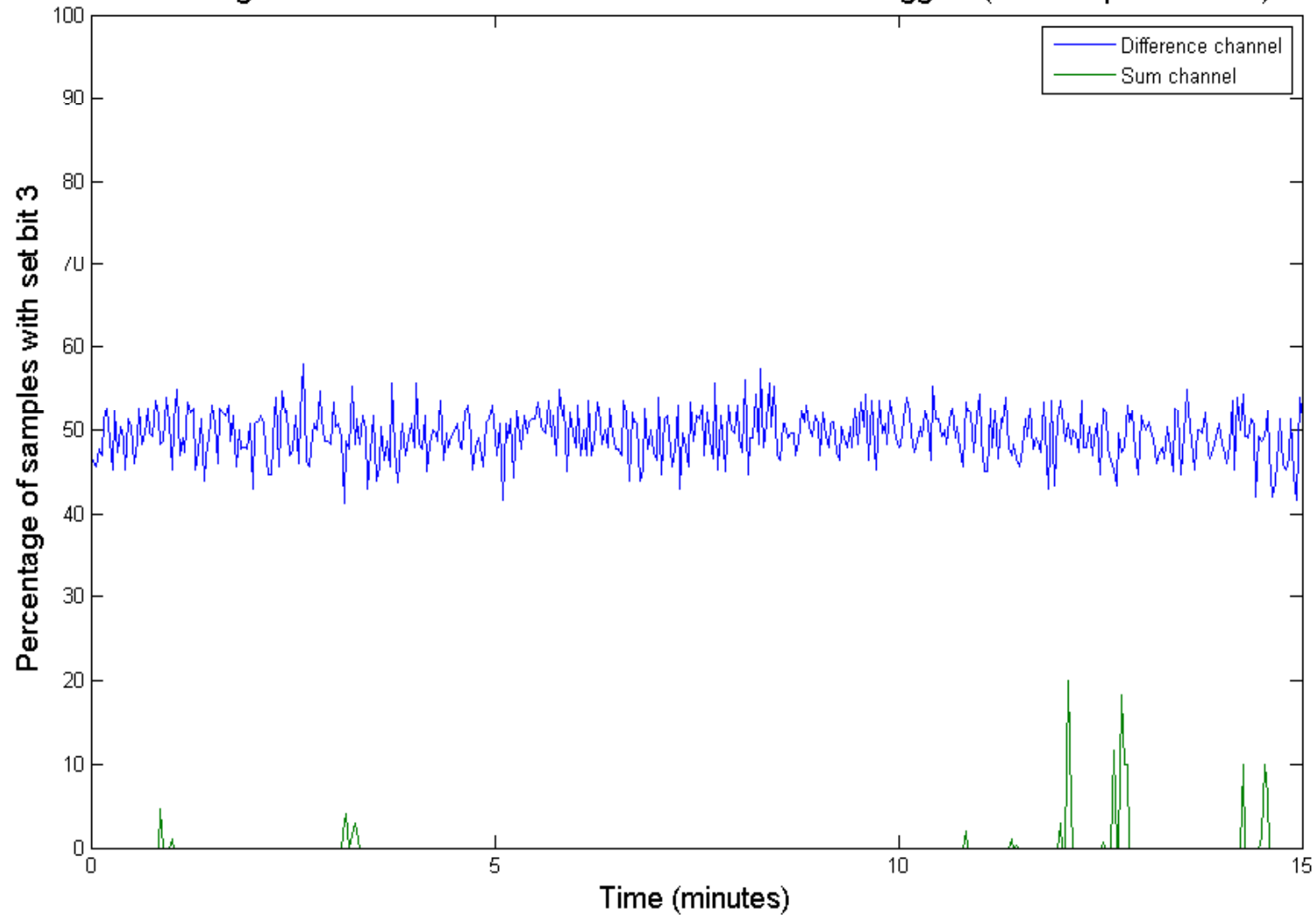
Percentages calculated from sets of 20 consecutive 10 Hz triggers (300 samples over 2s)



Board 1 (1)

Fraction of samples with bit 3 set. Board 1.

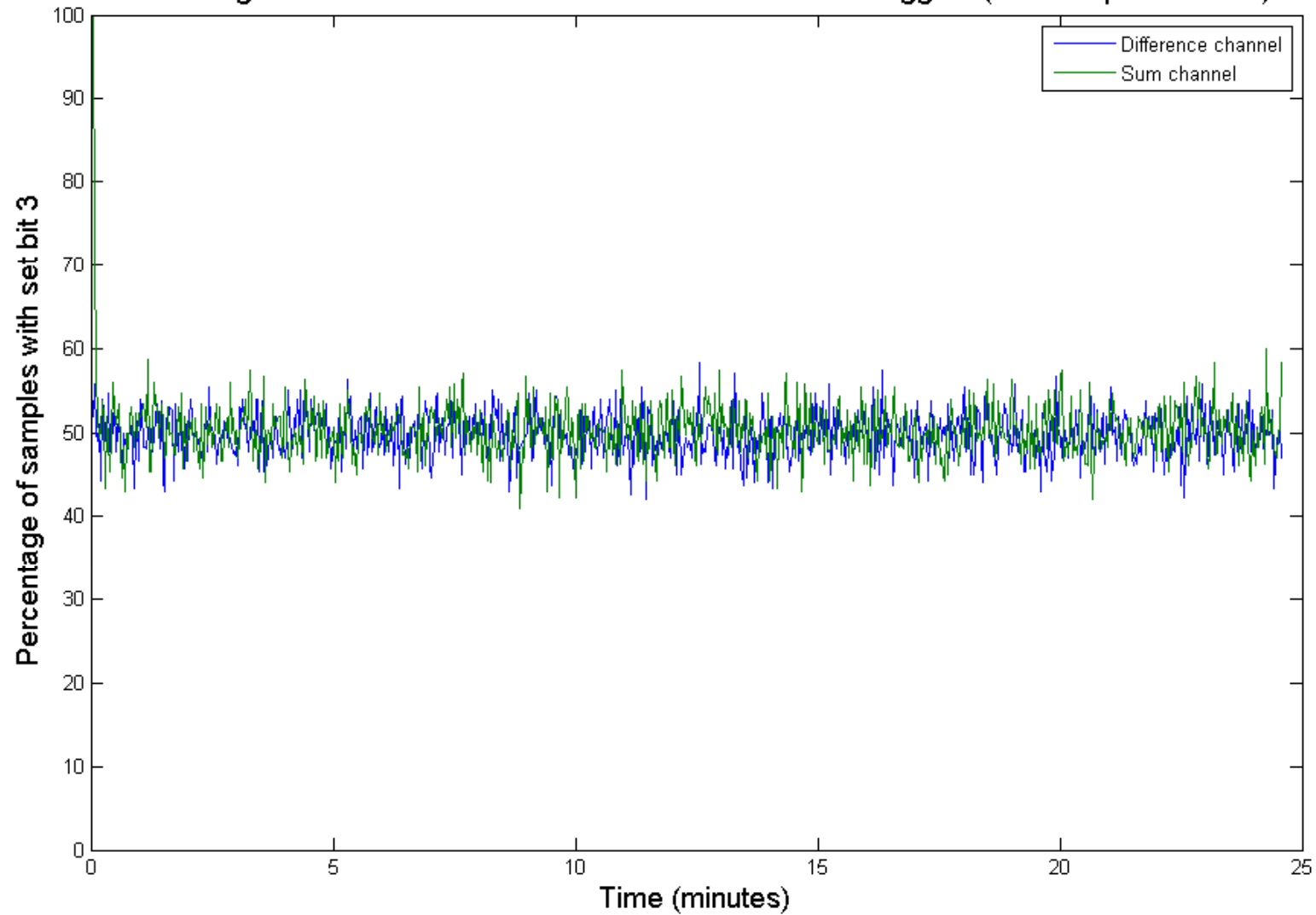
Percentages calculated from sets of 20 consecutive 10 Hz triggers (300 samples over 2s)



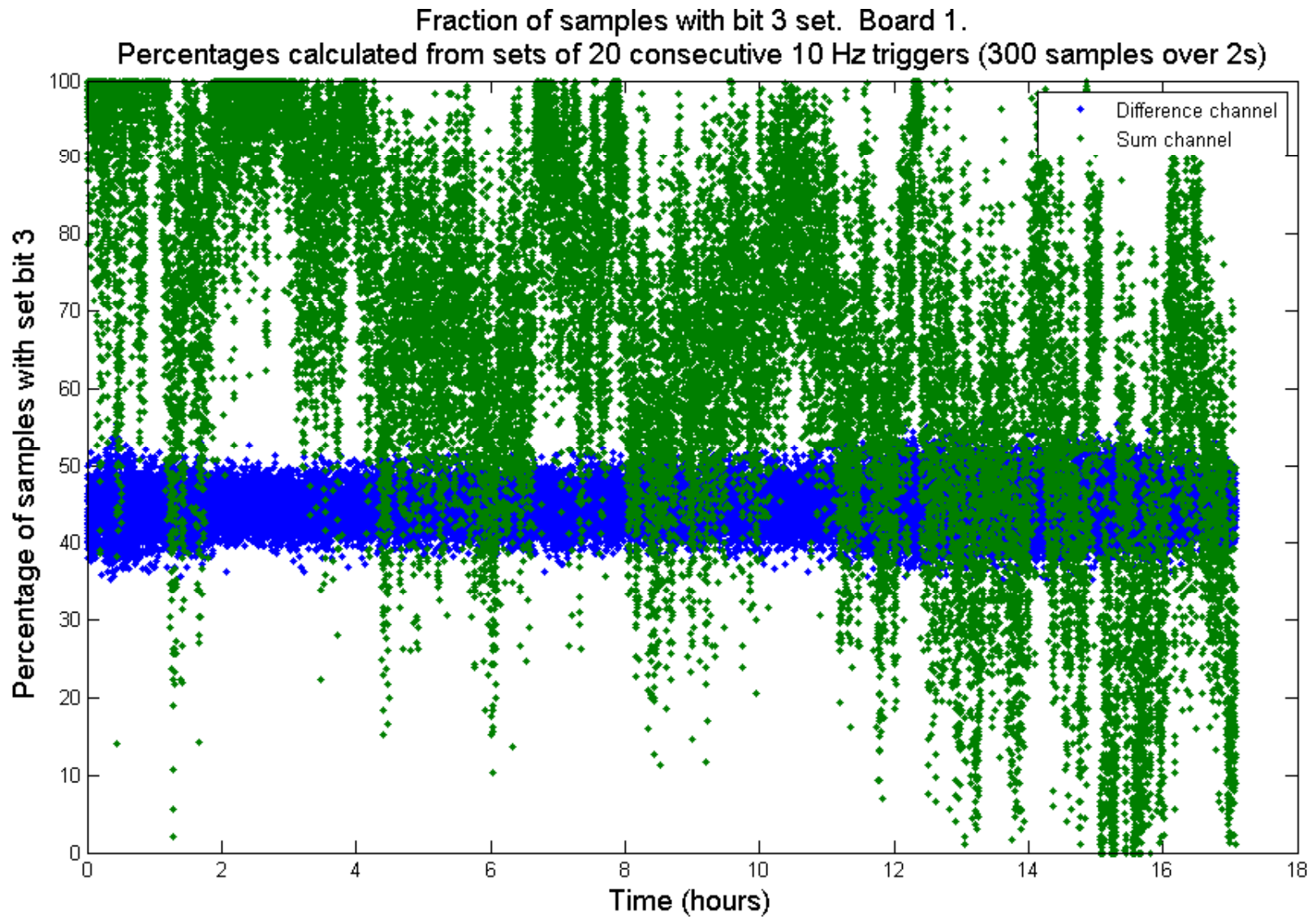
Board 1 (2)

Fraction of samples with bit 3 set. Board 1.

Percentages calculated from sets of 20 consecutive 10 Hz triggers (300 samples over 2s)



Board 1 overnight run



Board 1 overnight run - expanded

