

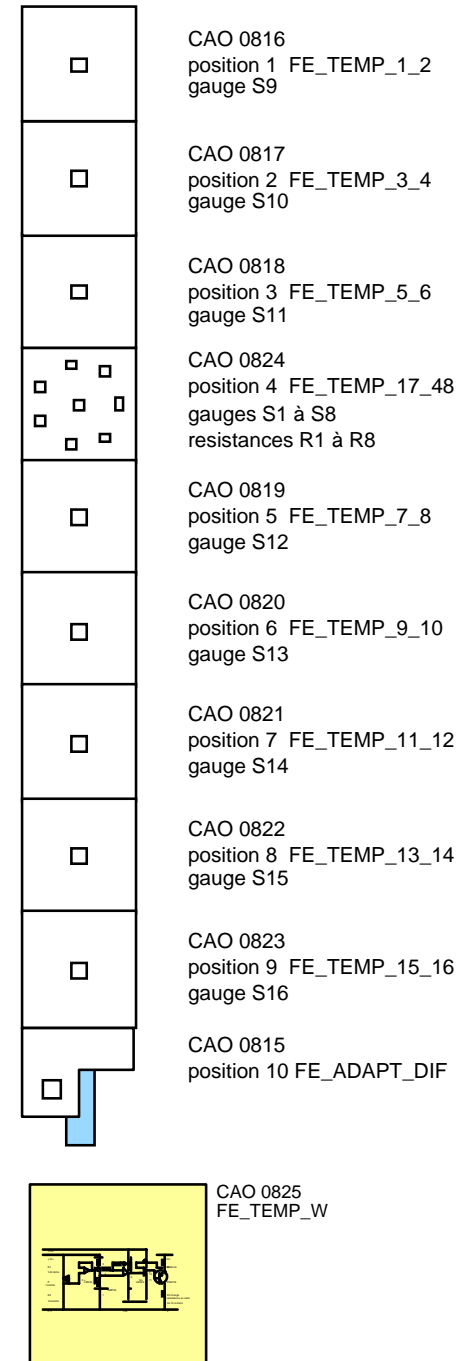
# PCBs STATUS IN 30/10/2008

## PCBs delivery by manufacture

2/2 FE\_TEMP\_1\_2 CAO 0816  
2/2 FE\_TEMP\_3\_4 CAO 0817  
2/2 FE\_TEMP\_5\_6 CAO 0818  
2/2 FE\_TEMP\_7\_8 CAO 0819  
2/2 FE\_TEMP\_9\_10 CAO 0820  
2/2 FE\_TEMP\_11\_12 CAO 0821  
2/2 FE\_TEMP\_13\_14 CAO 0822  
3/4 FE\_ADAPT\_DIFF CAO 0815

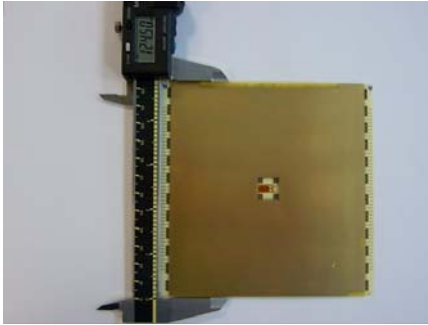
## PCBs Pending

2/2 FE\_TEMP\_15\_16 CAO 0823  
4/4 FE\_TEMP\_17\_48 CAO 0824  
1/4 FE\_ADAPT\_DIFF CAO 0815  
3/3 FE\_TEMP\_W CAO 0825

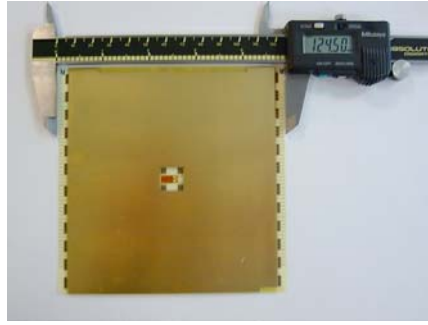


## PCB FEV\_TEMP

Width expected 124.5 mm  
Width made 124.5 mm



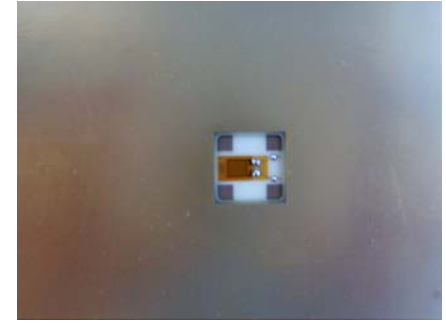
Length expected 124.5 mm  
Length made 124.5 mm



Thickness expected 0.8 mm  
Thickness made 0.81 mm

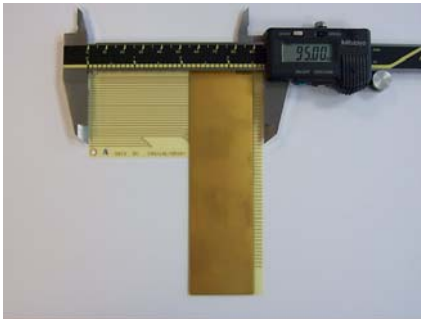


The gauge are now glued  
and cabling inside the PCB

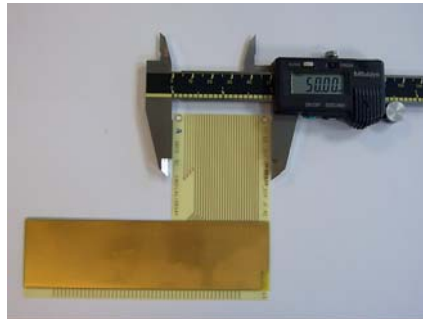


## PCB FEV\_ADAPT\_DIFF

Width 95 mm



Length 50 mm



Thickness 0.9 mm



Width 0.9 mm

