

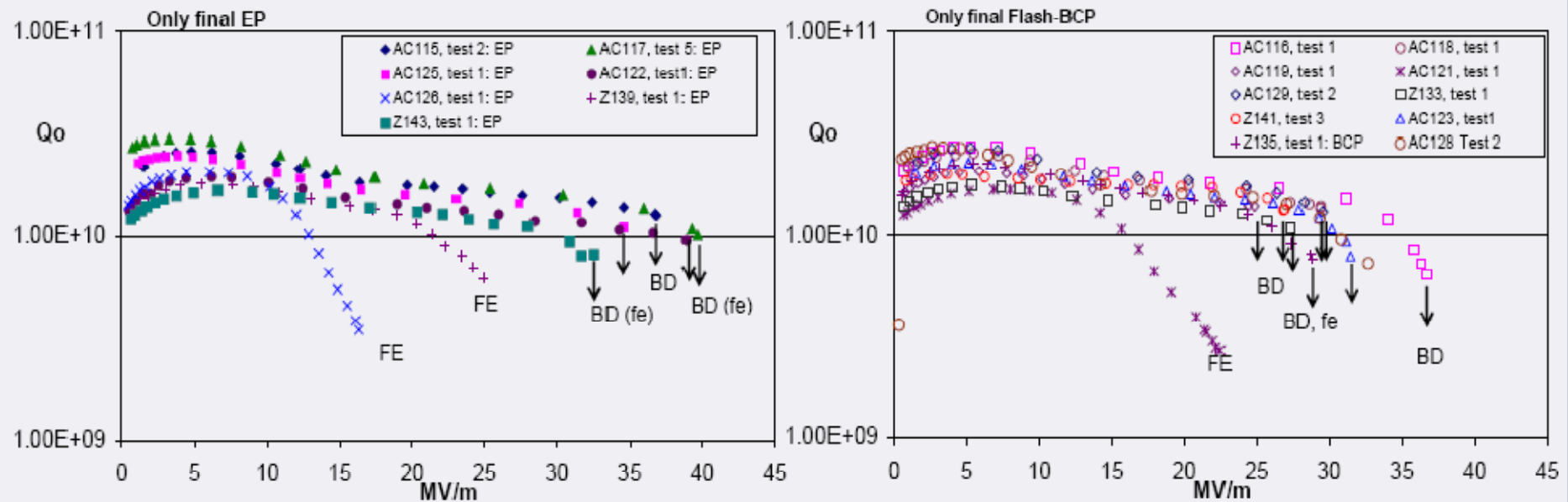


EU Status

- Continued testing of BCP and EP final preparation
 - **Results shown at TTC (D. Reschke)**
- KEK/Kyoto-type optical inspection system is being put into operation
 - **Two cavities from 6th production run taken out of helium vessel, test with T-map**
 - **Dissection of one of these cavities planned soon**
- Module
 - **Transport test to Saclay on the way**

6th cavity production: Results

- Available data: 7 (of 10) final EP cavities; 10 final short BCP cavities

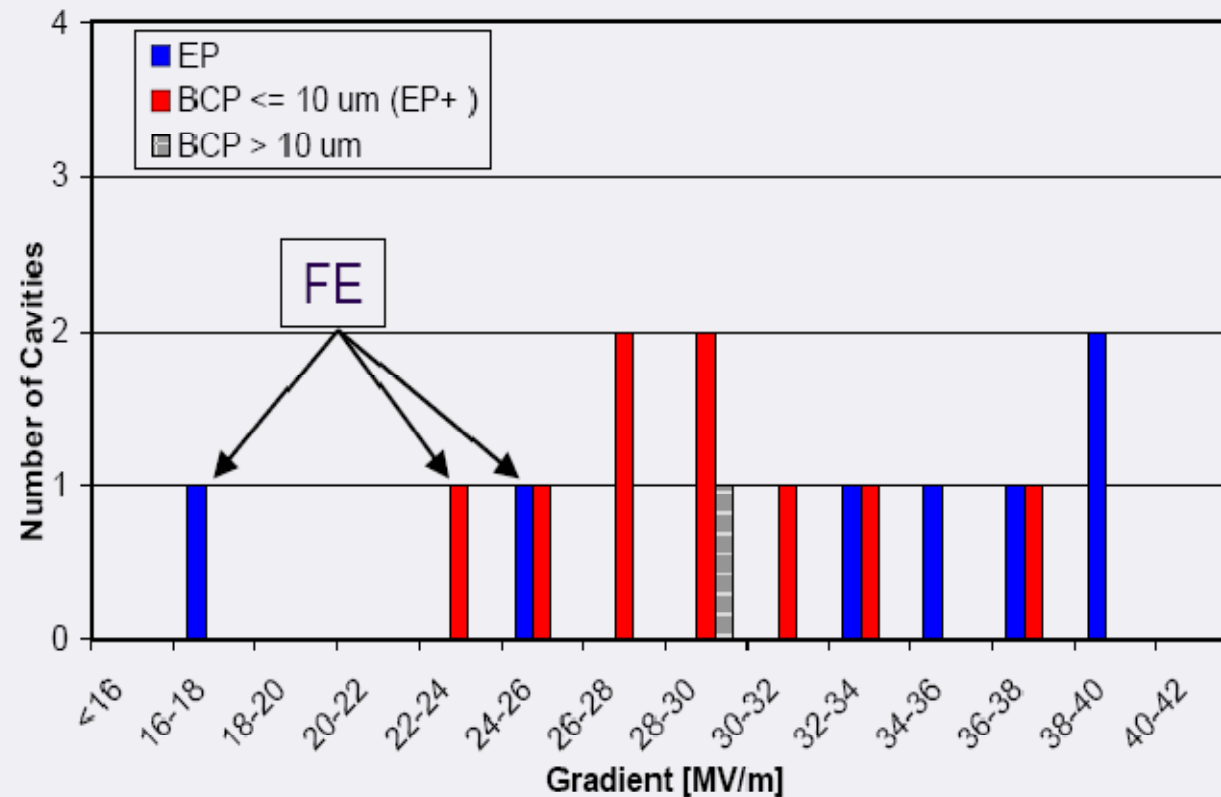


=> Flash BCP shows some Q-slope after bake

=> FE is still a problem !!

- FE loaded cavities will be HPR re-rinsed => in preparation
- 3 more EP cavities follow soon

6th cavity production: Results II



=> test series + final results to be completed in the next weeks

Module Transport Frame



- The Frame is equipped with two **Data Loggers EnDal Curve 1111**
- INFN equipped the Frame and the Module with **additional sensors** and uses **3 geophones** inside of the module (2 on the magnet and 1 on the coldmass' center)
- The INFN electronic will also **readout the vacuum gages** on the beam pipe and coupler pump line and the is permanently checking all RF main input couplers with respect to a short circuit.

More during this TTC meeting / WG2 by Rolf Lange

- **DESY – CEA Saclay – DESY transport scheduled for week 45**
- **re-test at CMTB in end of November '08**



Module Transport test to Saclay



4.11.2008 ILC S0 telephone meeting

Global Design Effort

5