



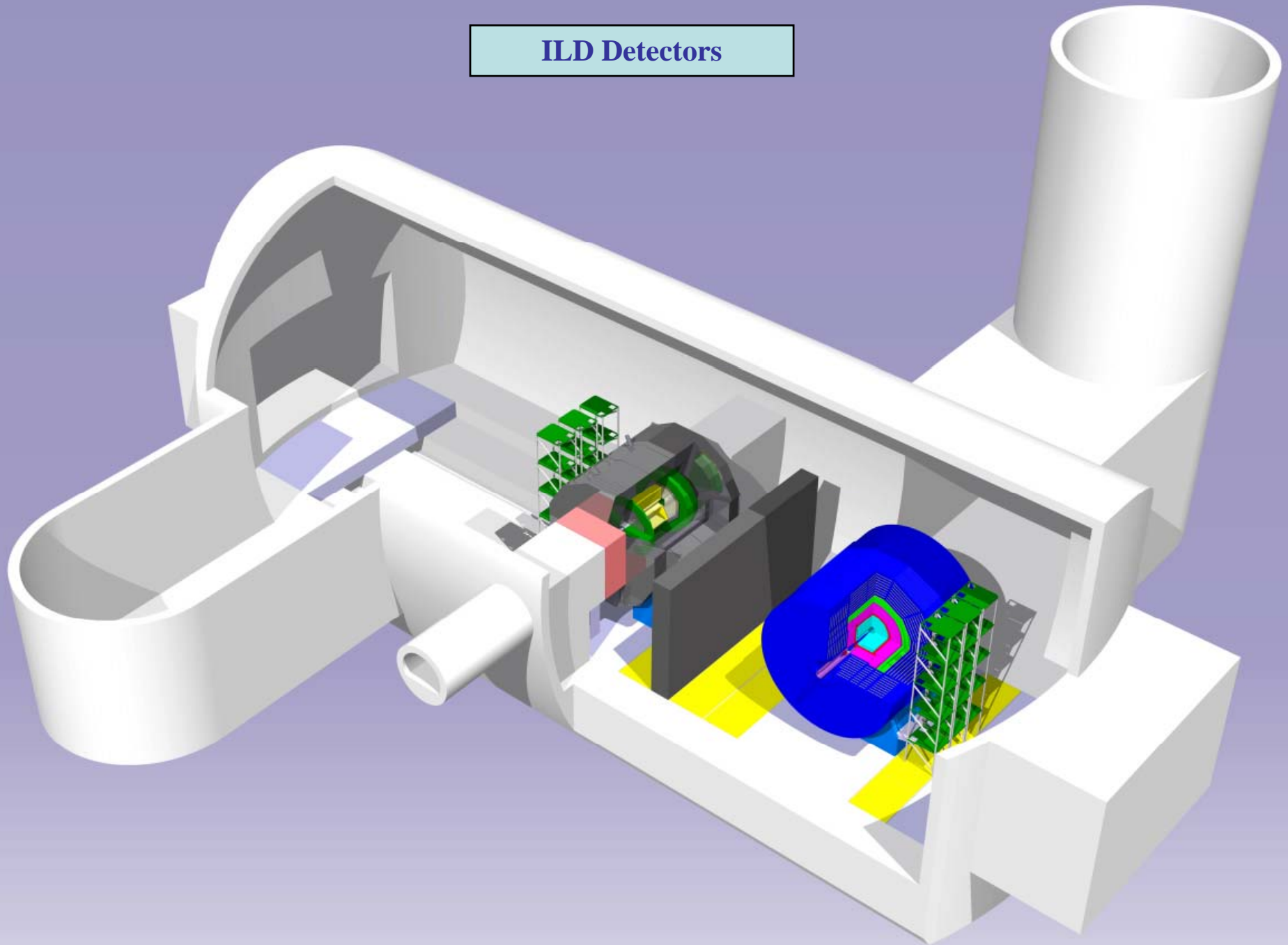
ILD-Workshop 21 January 2009



Push-Pull Considerations

A. Hervé / ETHZ@CERN

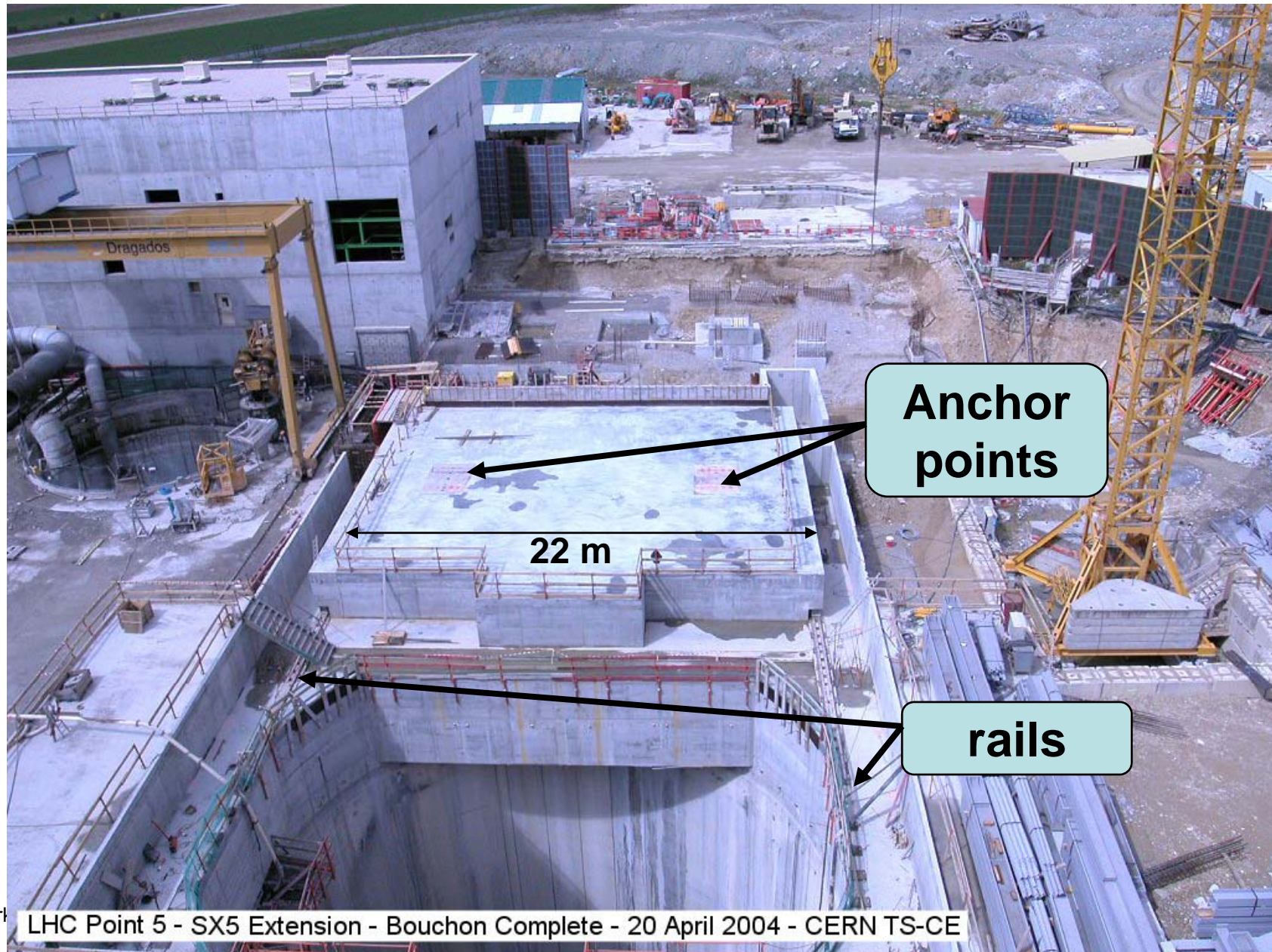
ILD Detectors



Design N.S. ETH-Z, January 2009.

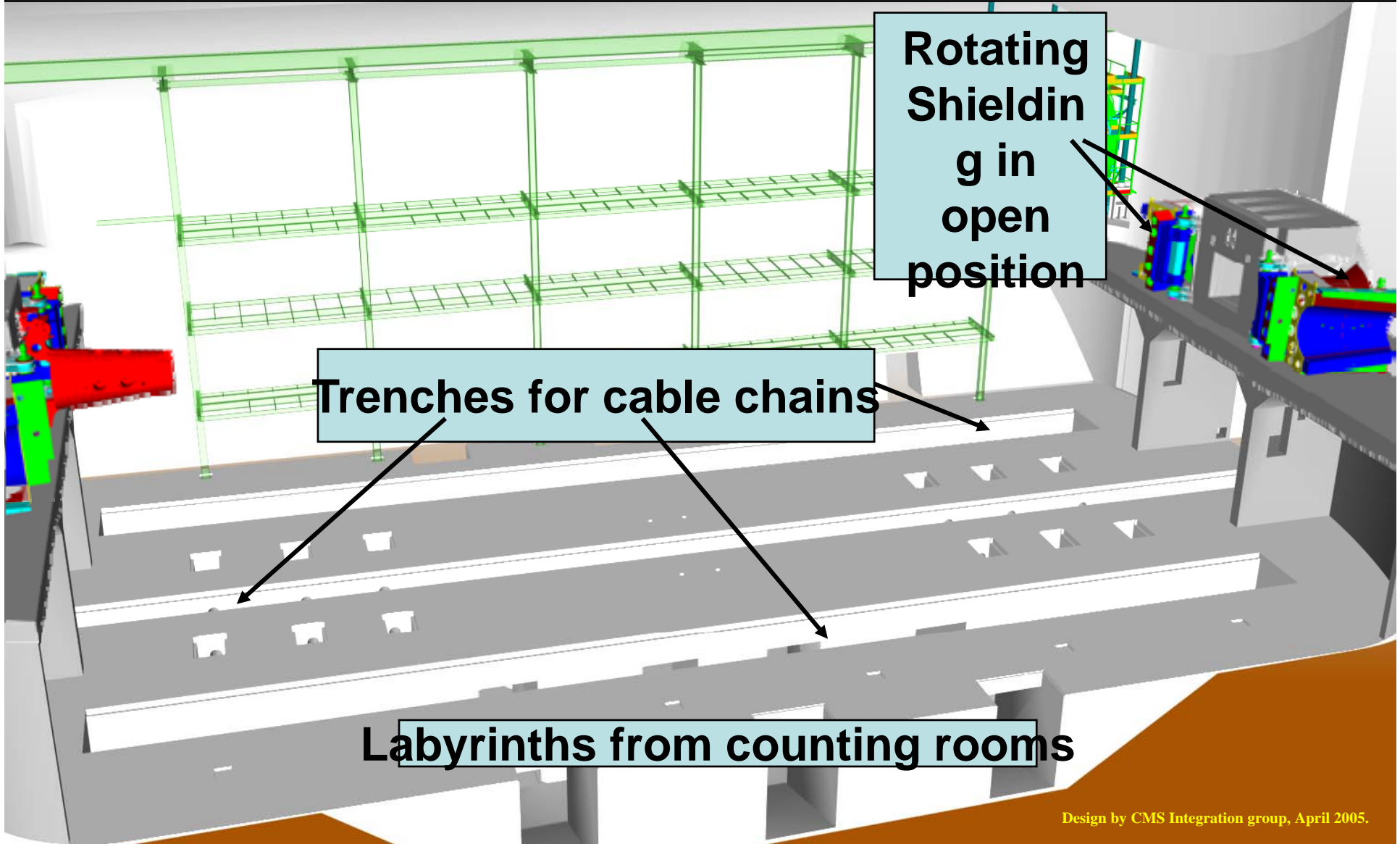


Construction of Main Plug on side of Shaft Apr. 04 Used as radiation protection and lifting platform



UX5 before receiving Elements

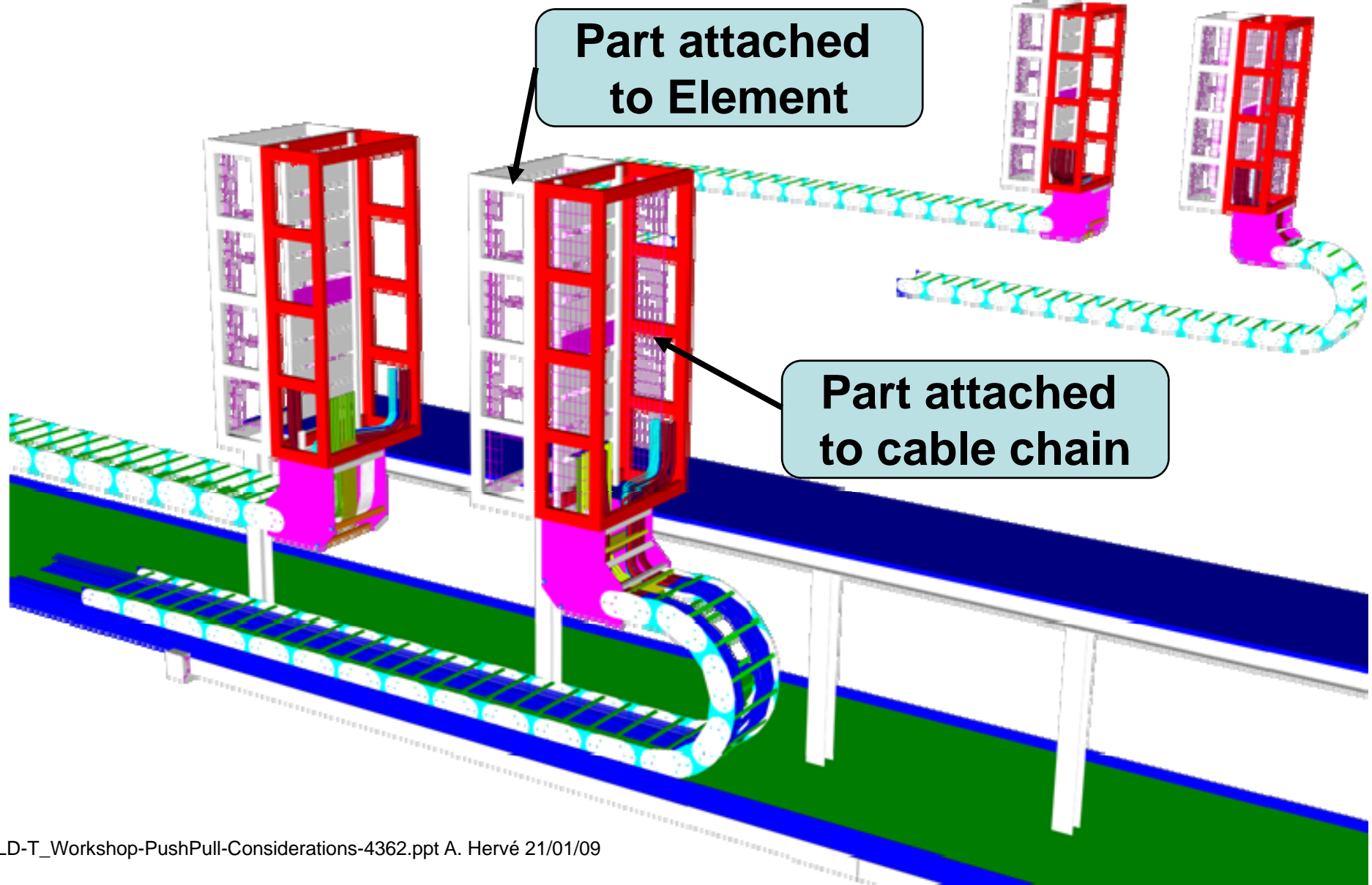
The cave below is used as dispatching center for cables

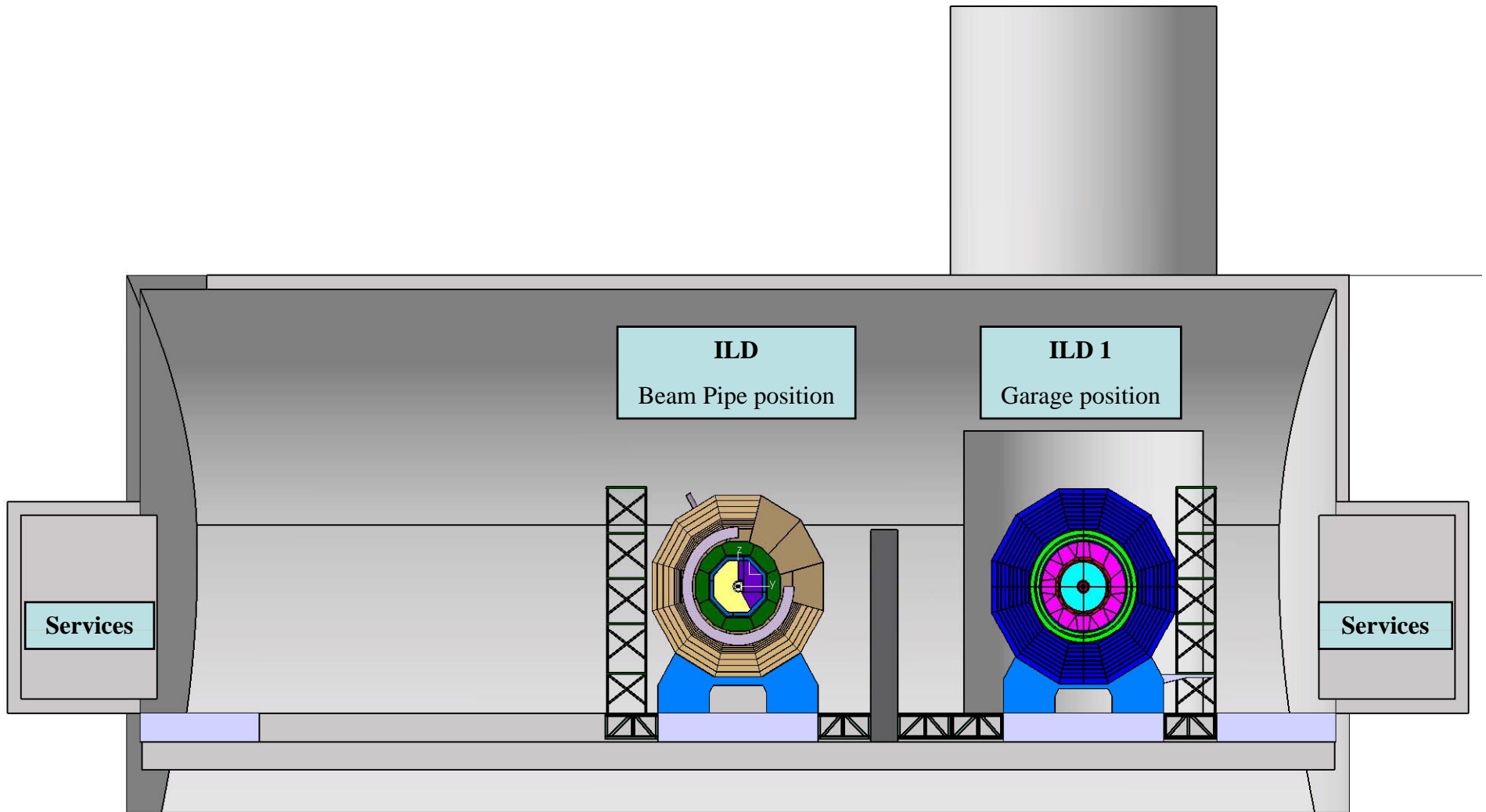


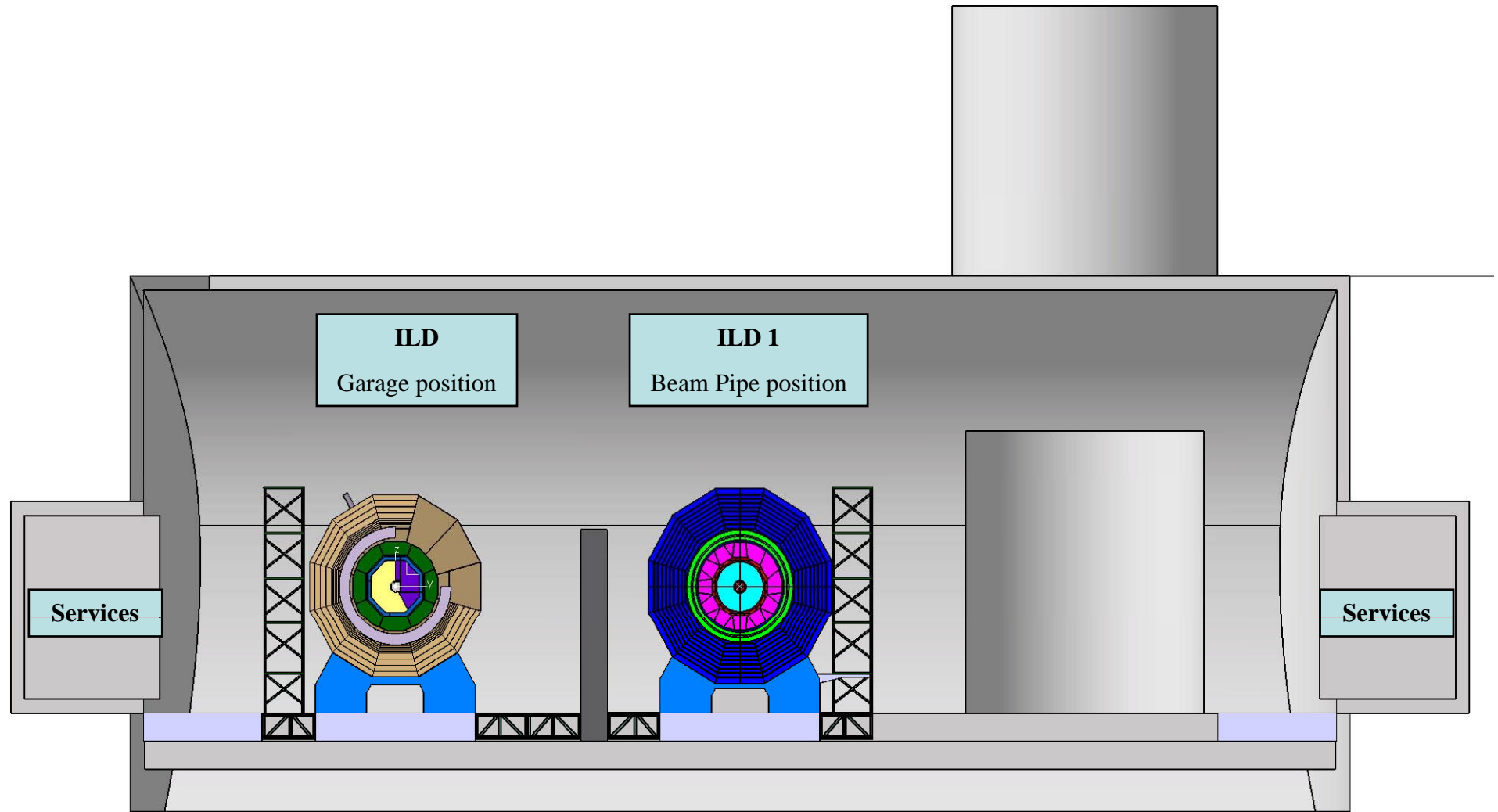
Design by CMS Integration group, April 2005.

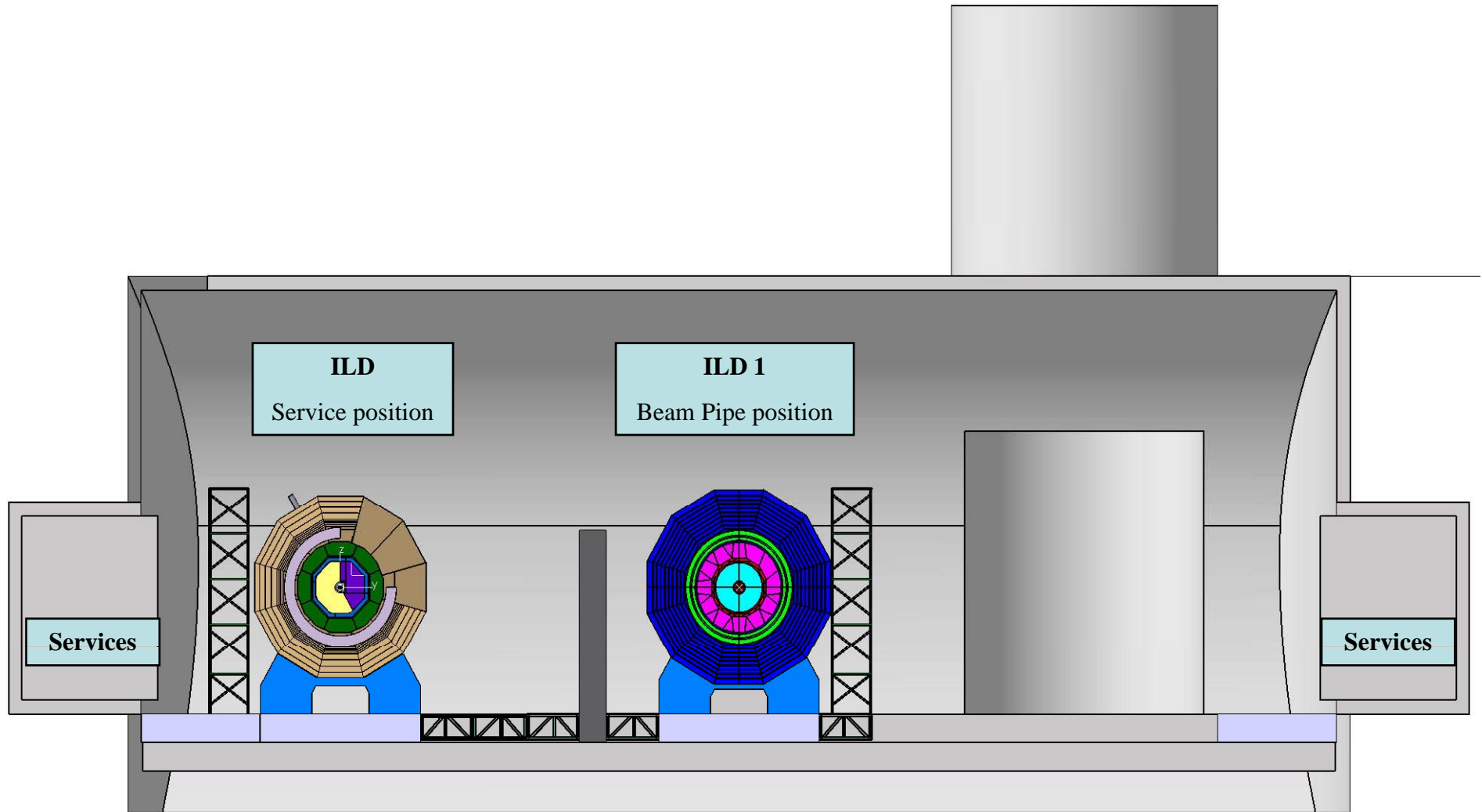


How cable chains are connected to pre-cabled Elements



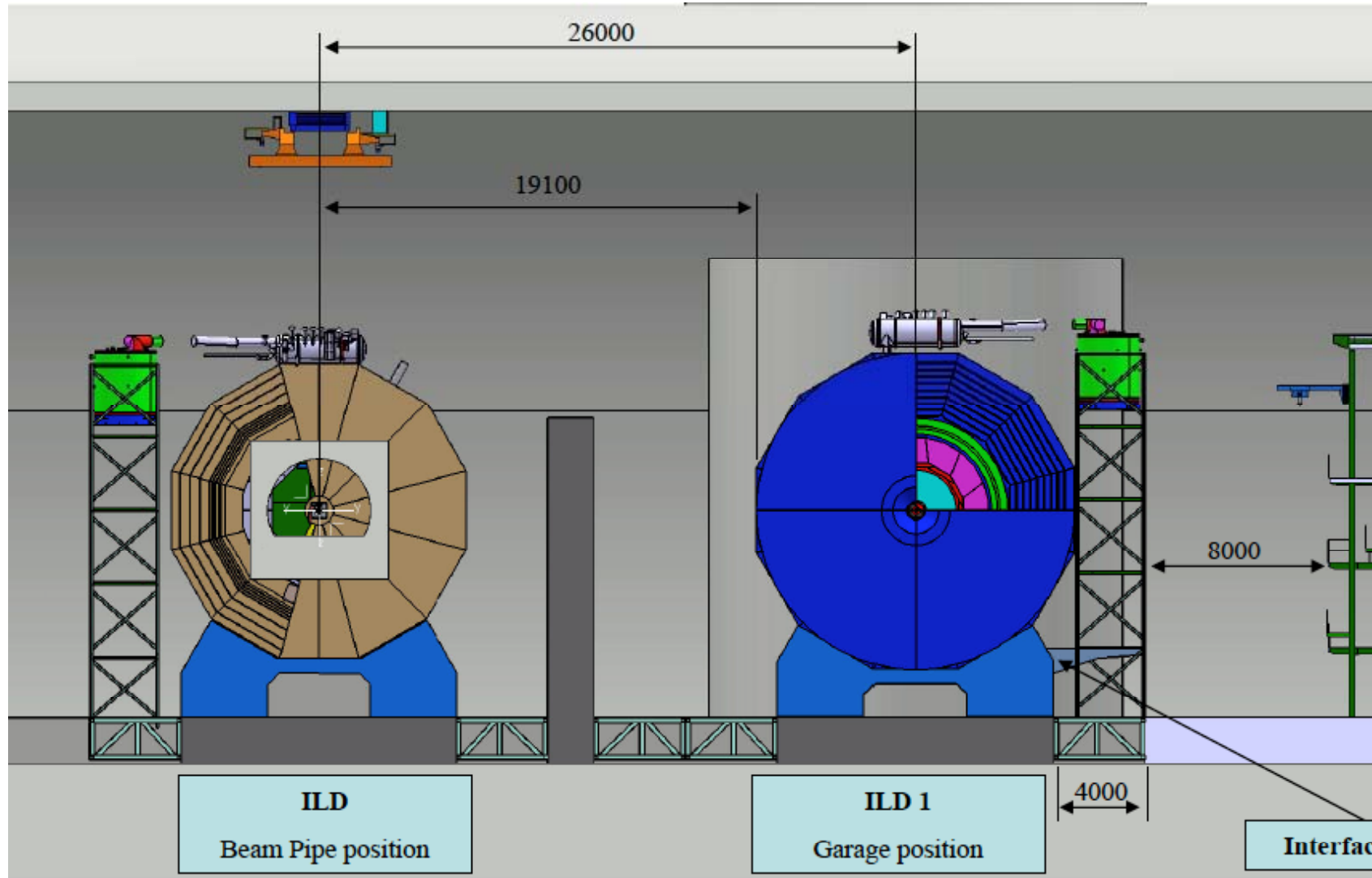






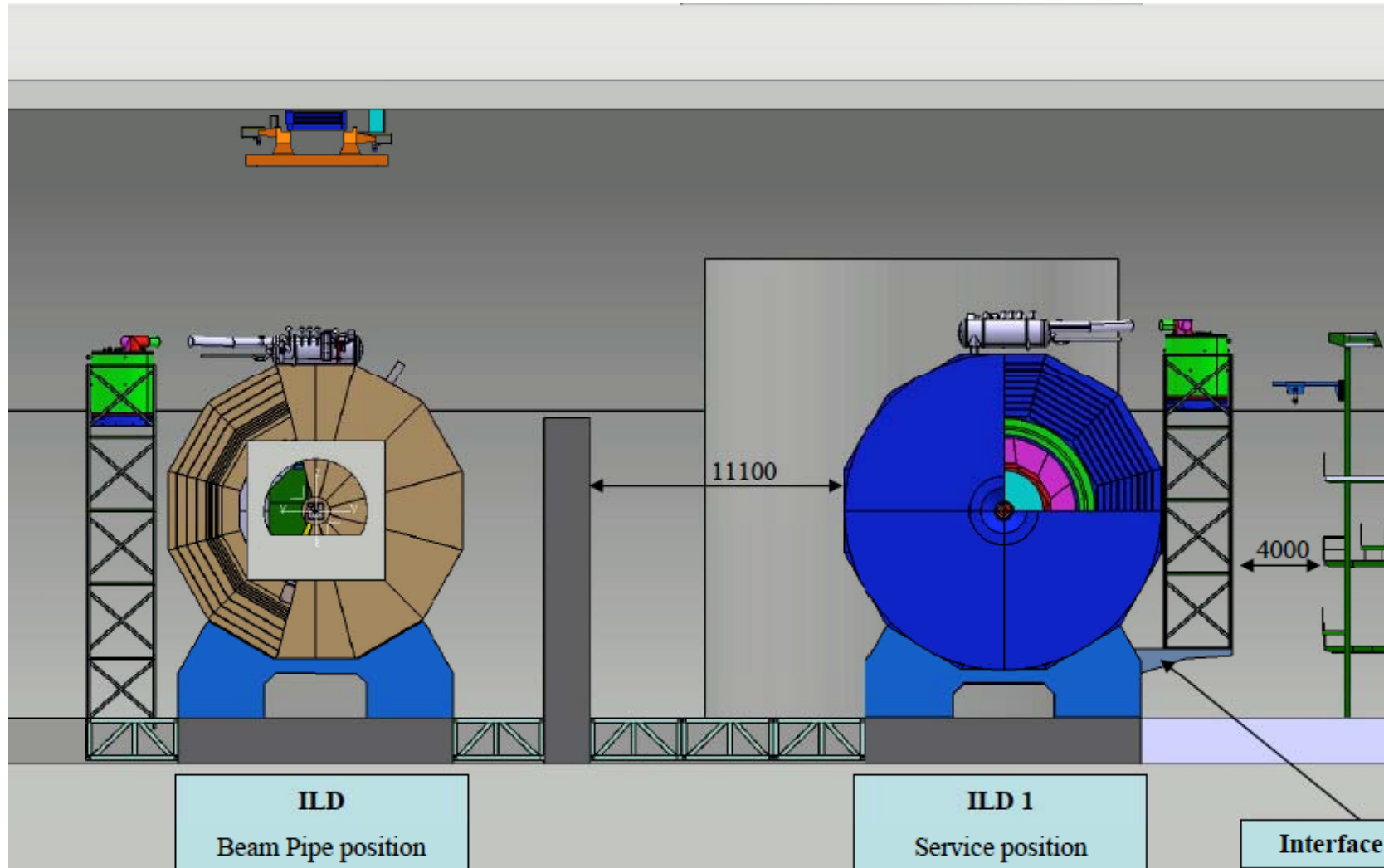


Garage Position

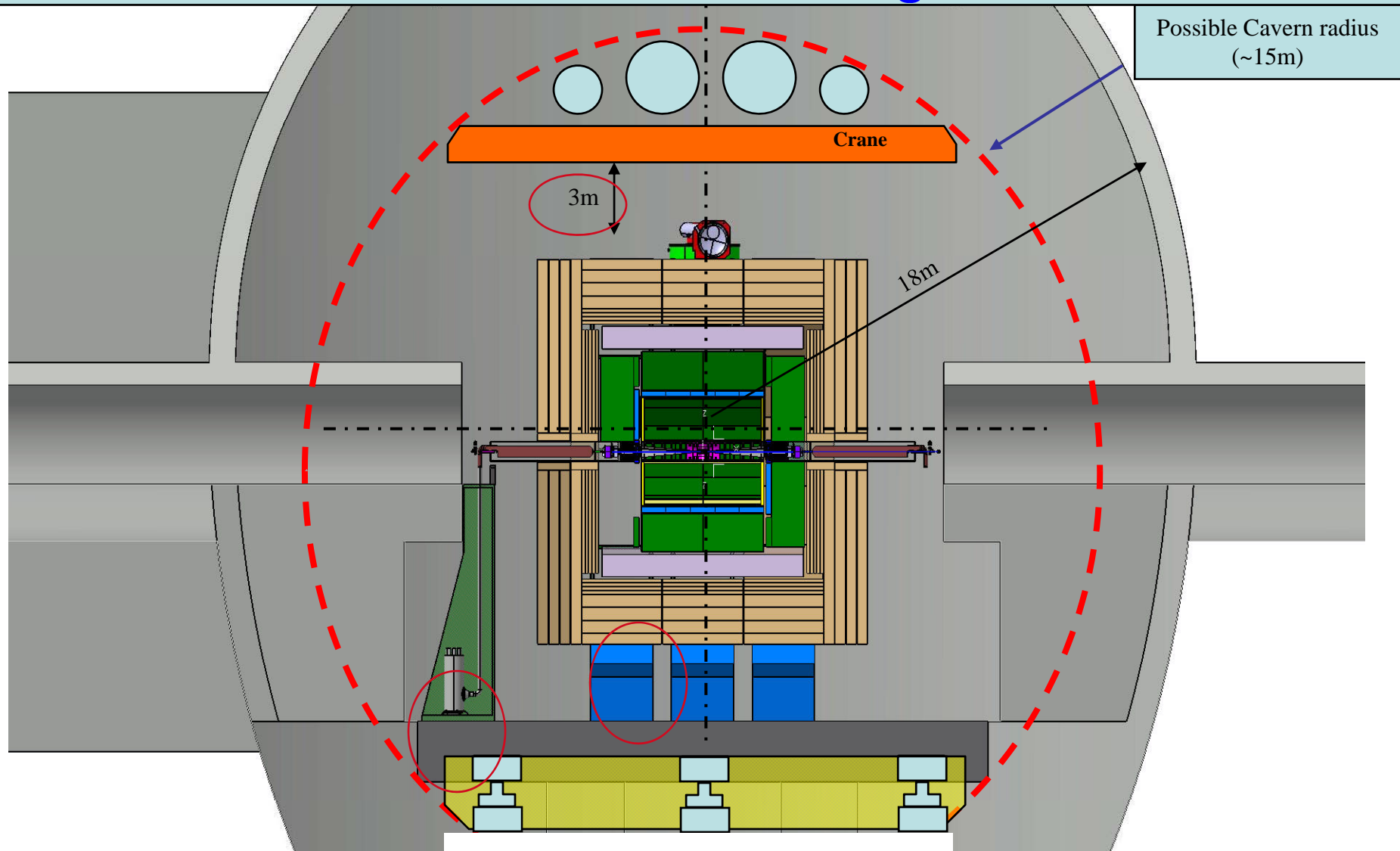




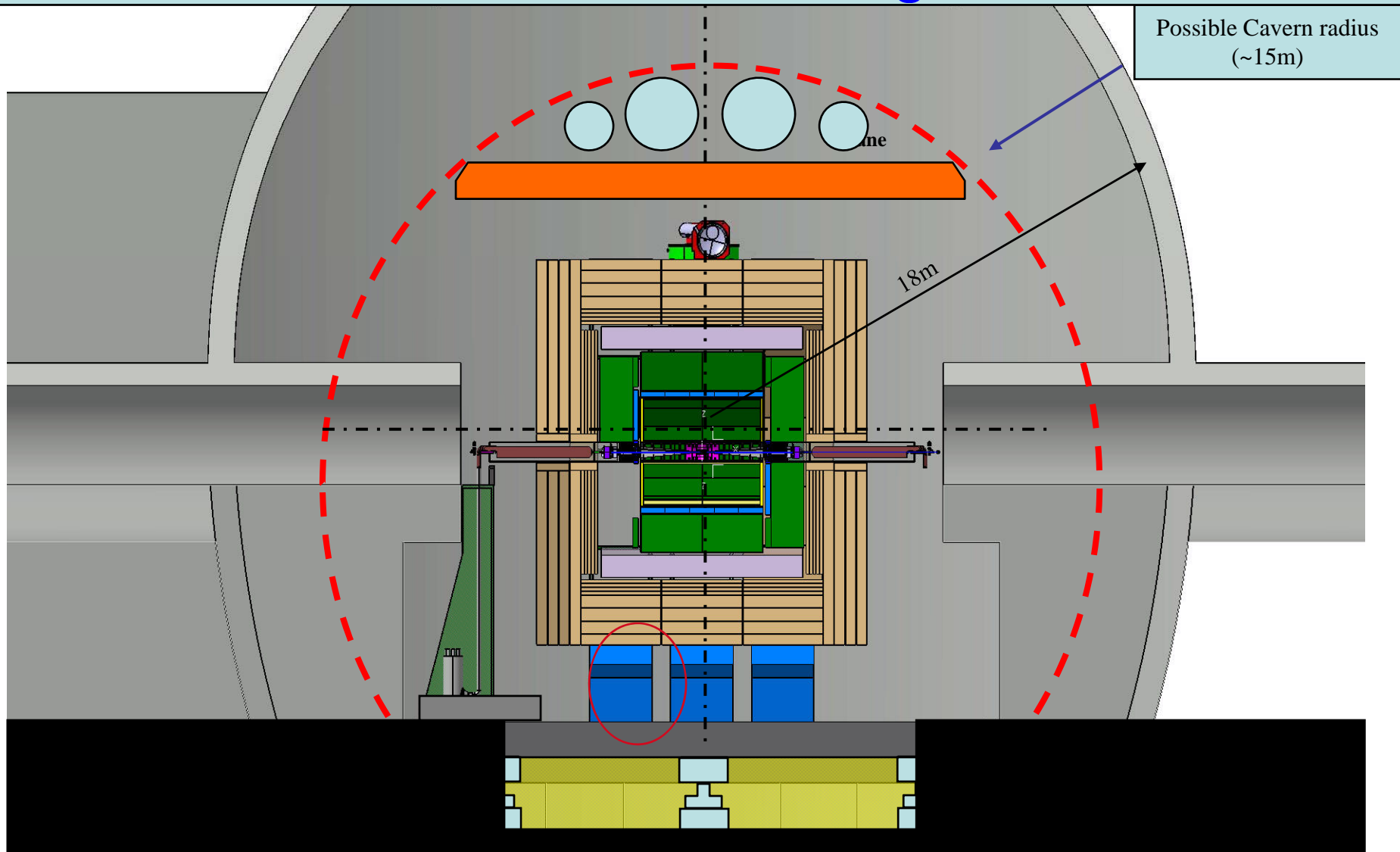
Garage Position with Offset



An effort must be made to reduce the Diameter of the Underground Hall



An effort must be made to reduce the Diameter of the Underground Hall





If these two concrete pieces are integrated in Pacman this, would maximize opening on IP



QuickTime™ et un décompresseur sont requis pour visionner cette image.





The equivalent drawing must be generated to define the space needed in garage position

