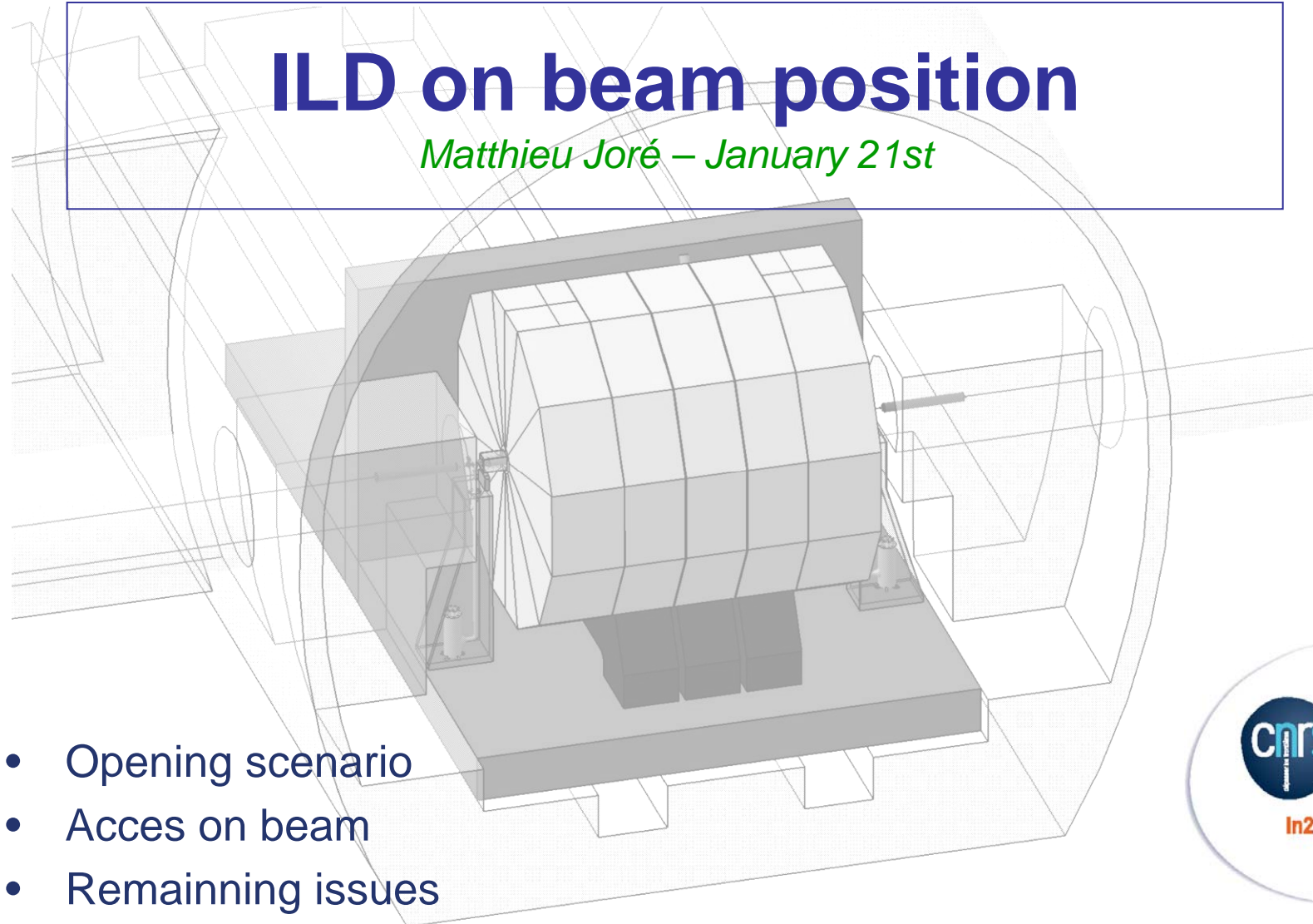


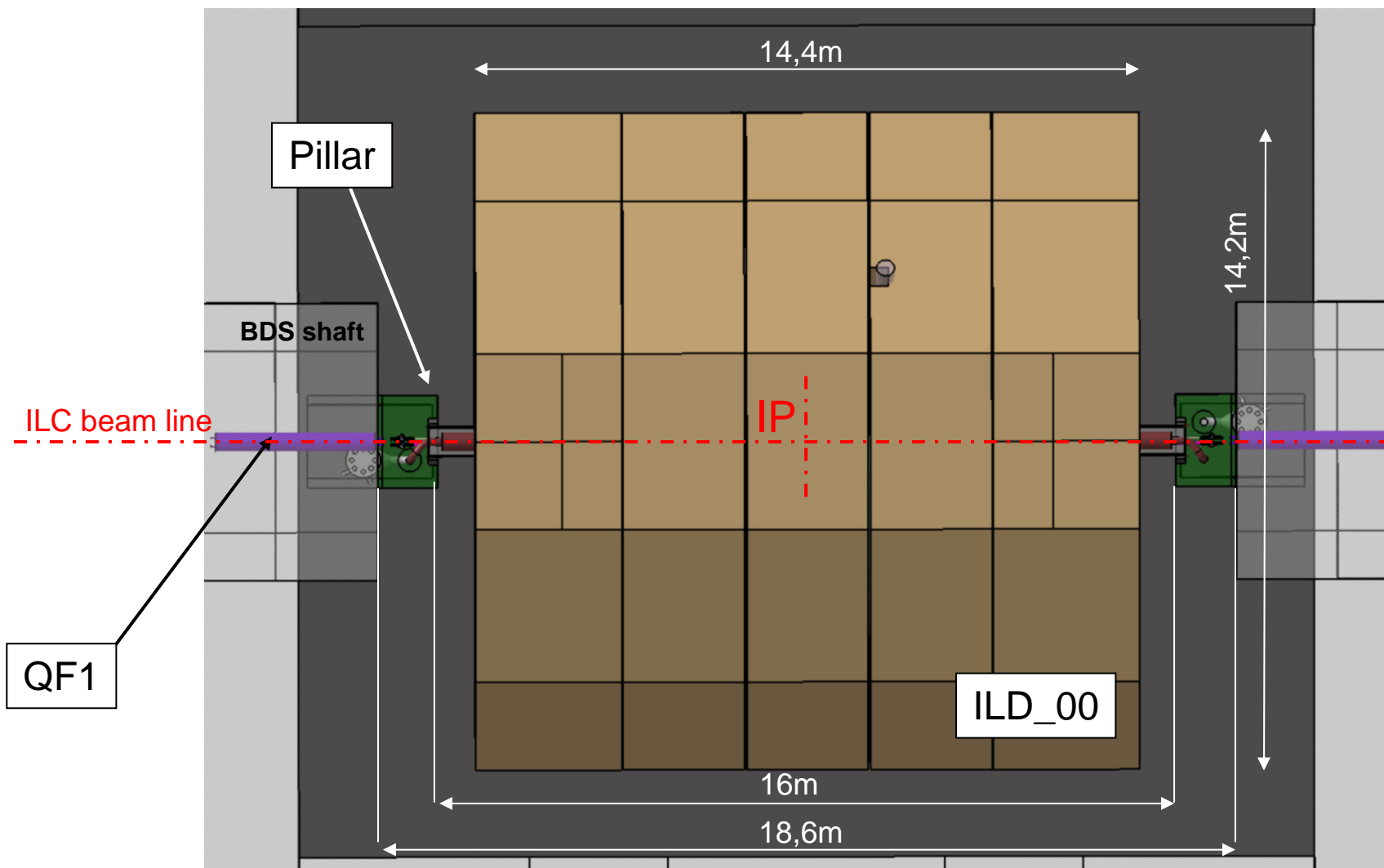
ILD on beam position

Matthieu Joré – January 21st

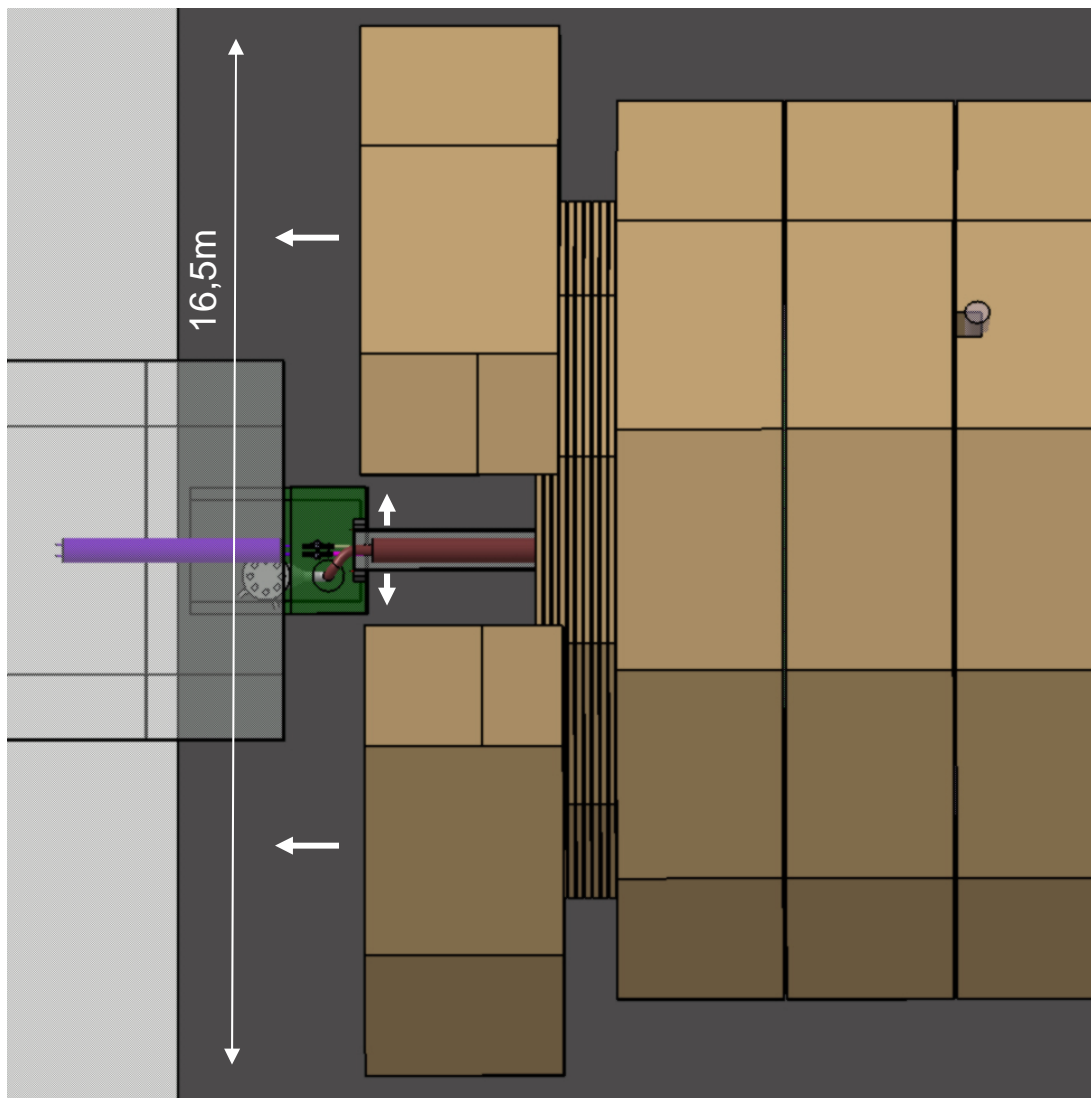


- Opening scenario
- Acces on beam
- Remaining issues



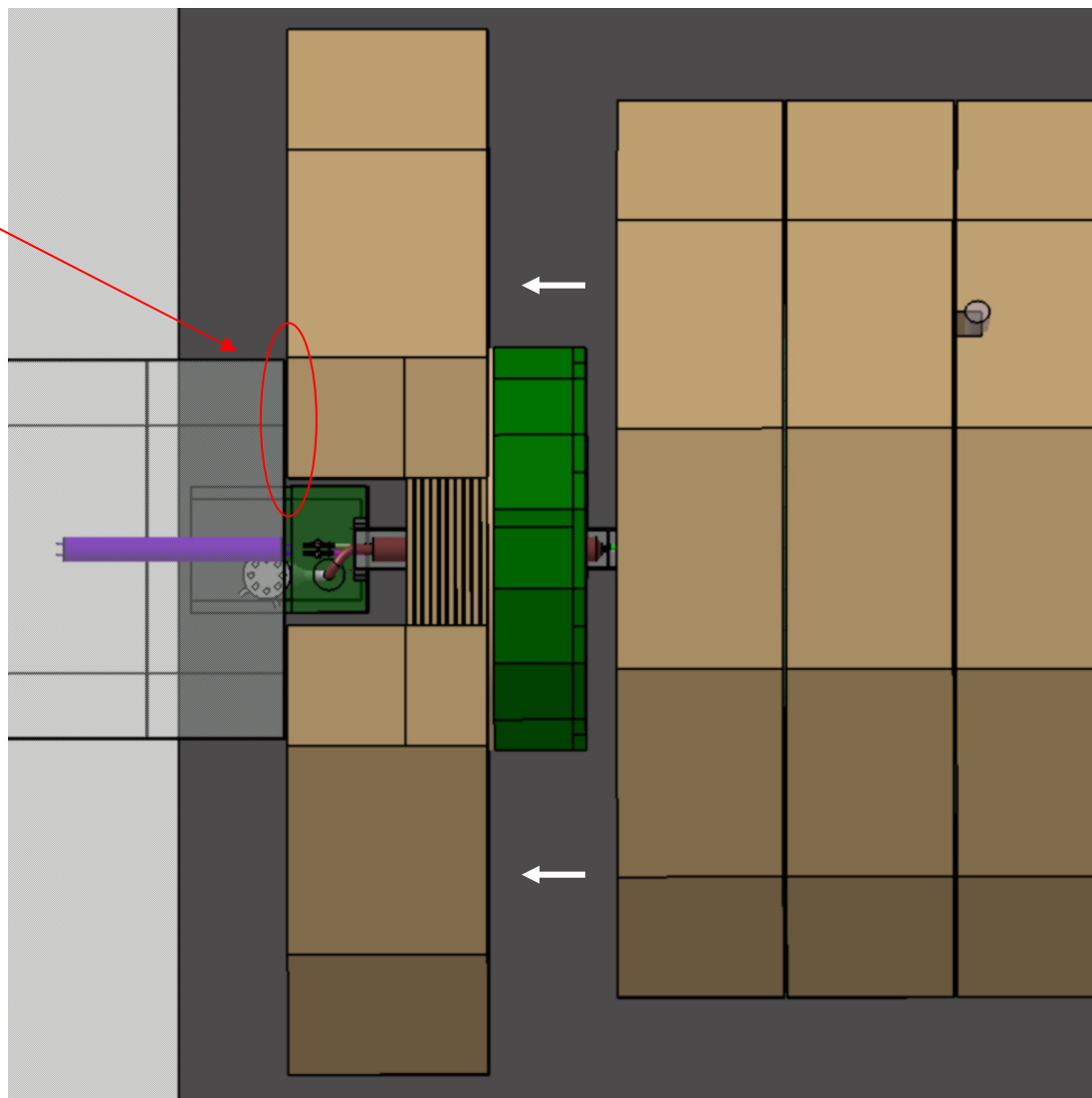


Open the back doors

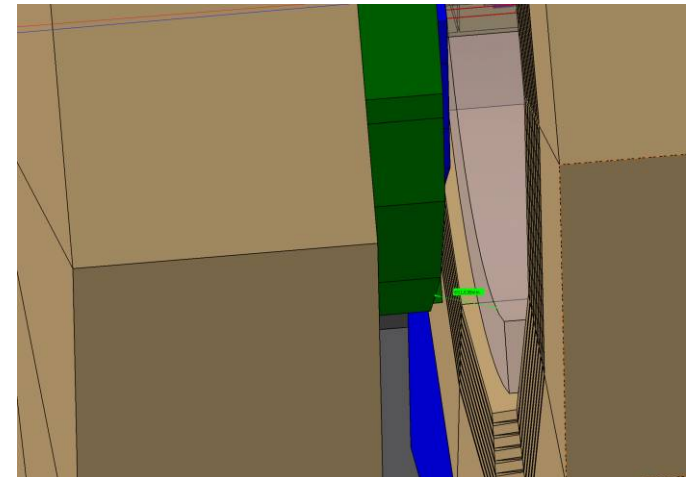
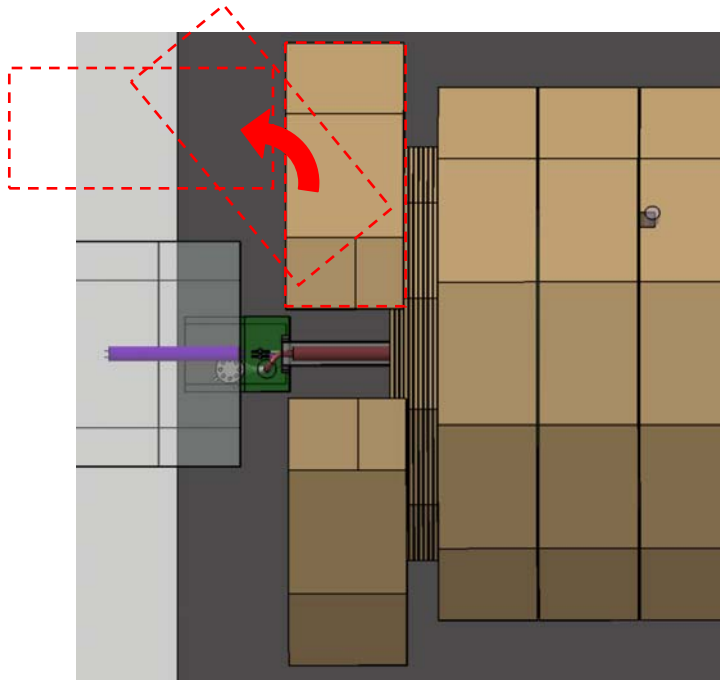


Open the front ring

Limited by
shaft



- About 65cm with the actual dimensions
- Sufficient ? In order to pull out the front ring to the pillar :
 - **Could we increase it by modifying the shaft design**
(Does it anywhere exist?)
 - **Push out the back doors (if not instrumented ?)**
 - **Have smaller EndCaps**



- We must increase the access on beam to the limit (1.2m – see Catherine's talk)
- What about all the cables/services outside the detector ?
 - **Need 2 perpendicular cables chains for both opening detector and push-pull**
- Influence of the second detector on the stray field ?
- Design of the Pacman shielding
- ...

Thanks for your attention.

Questions?