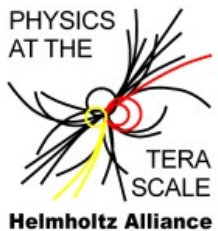


RD51 test beam at CERN



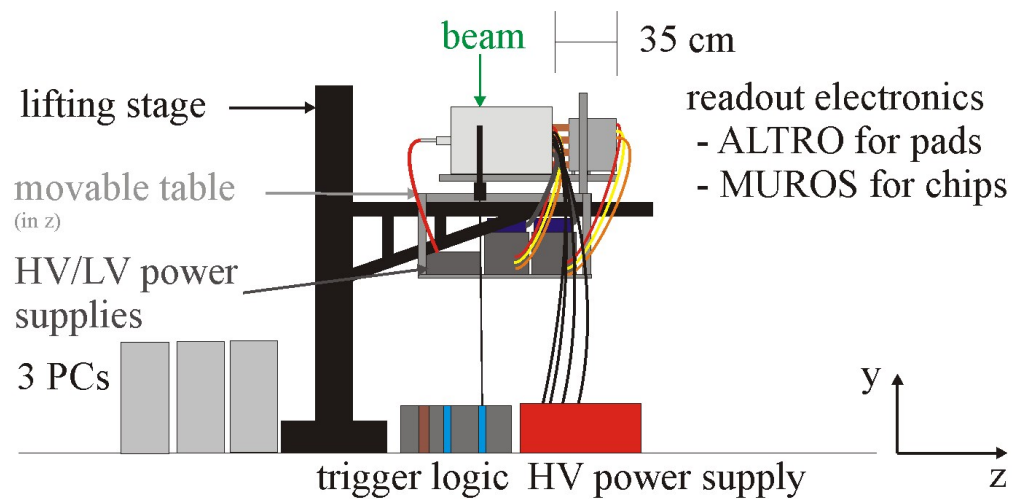
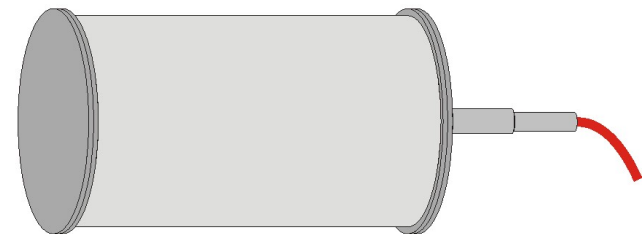
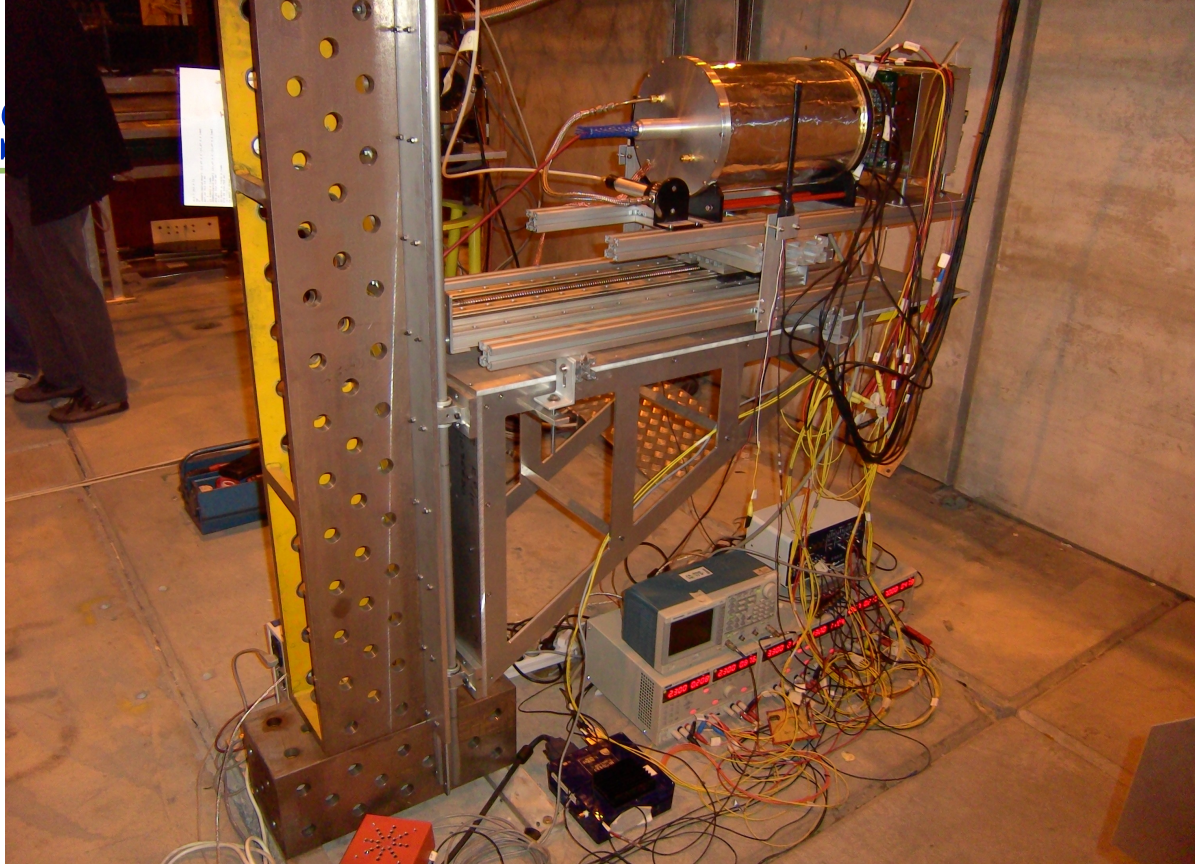
Martin Killenberg
Universität Bonn



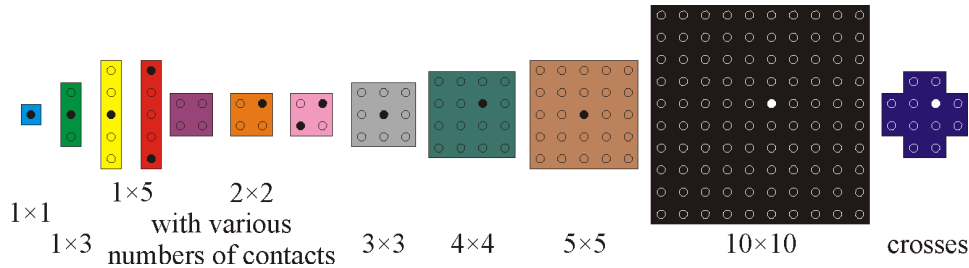
GEFÖRDERT VOM



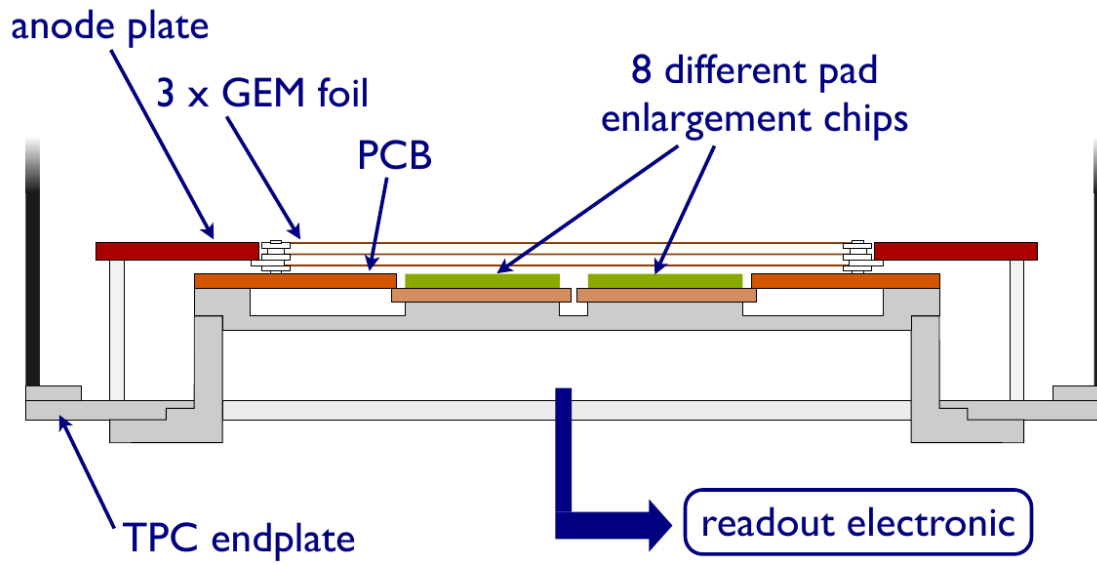
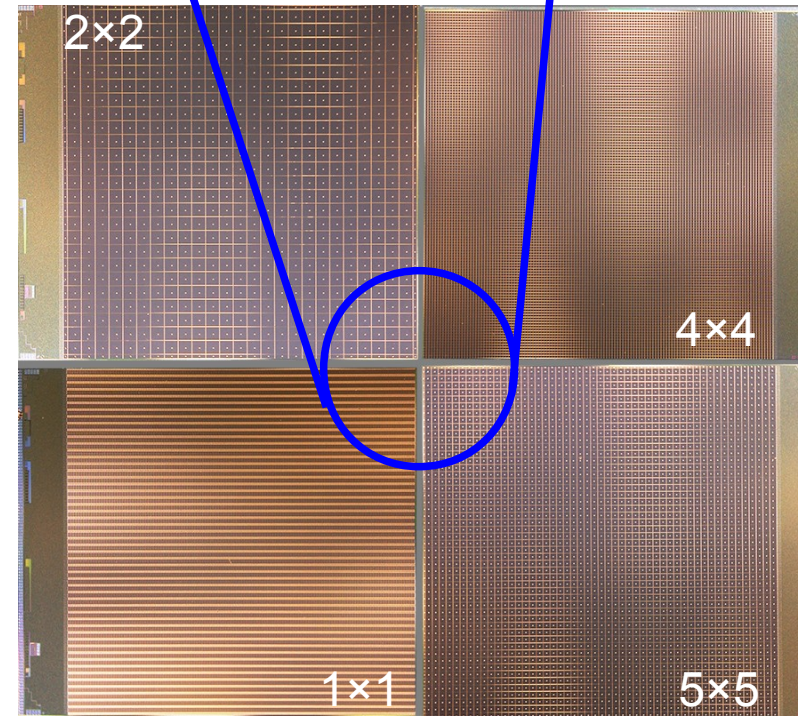
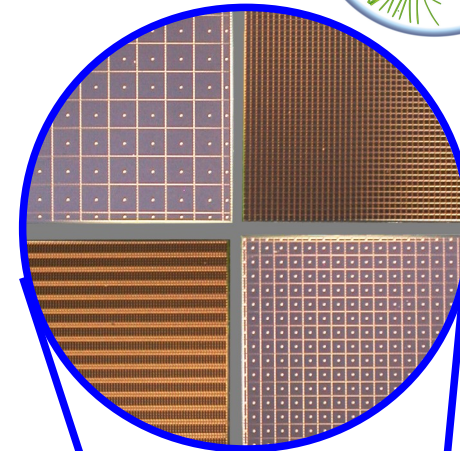
LCTPC-Workpackage Meeting
11. November 2009



Timepix with Larger Pixels



- Various geometries have been produced by IZM, Berlin.
- They will be placed on 2 quadboards.



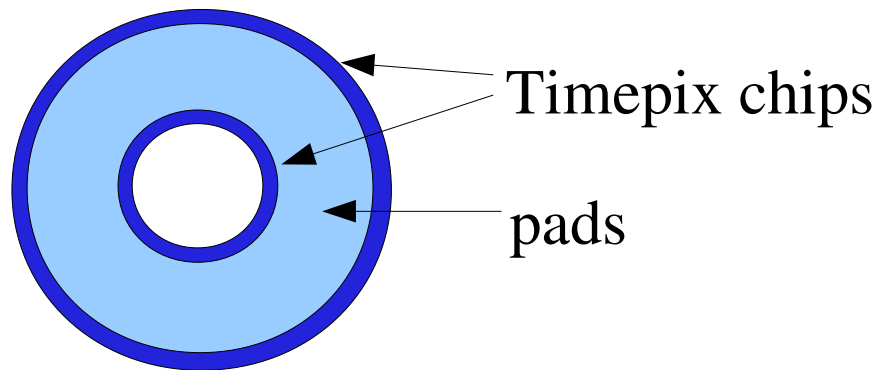
Goal 2 for the test beam:



Combination Pads and Pixels

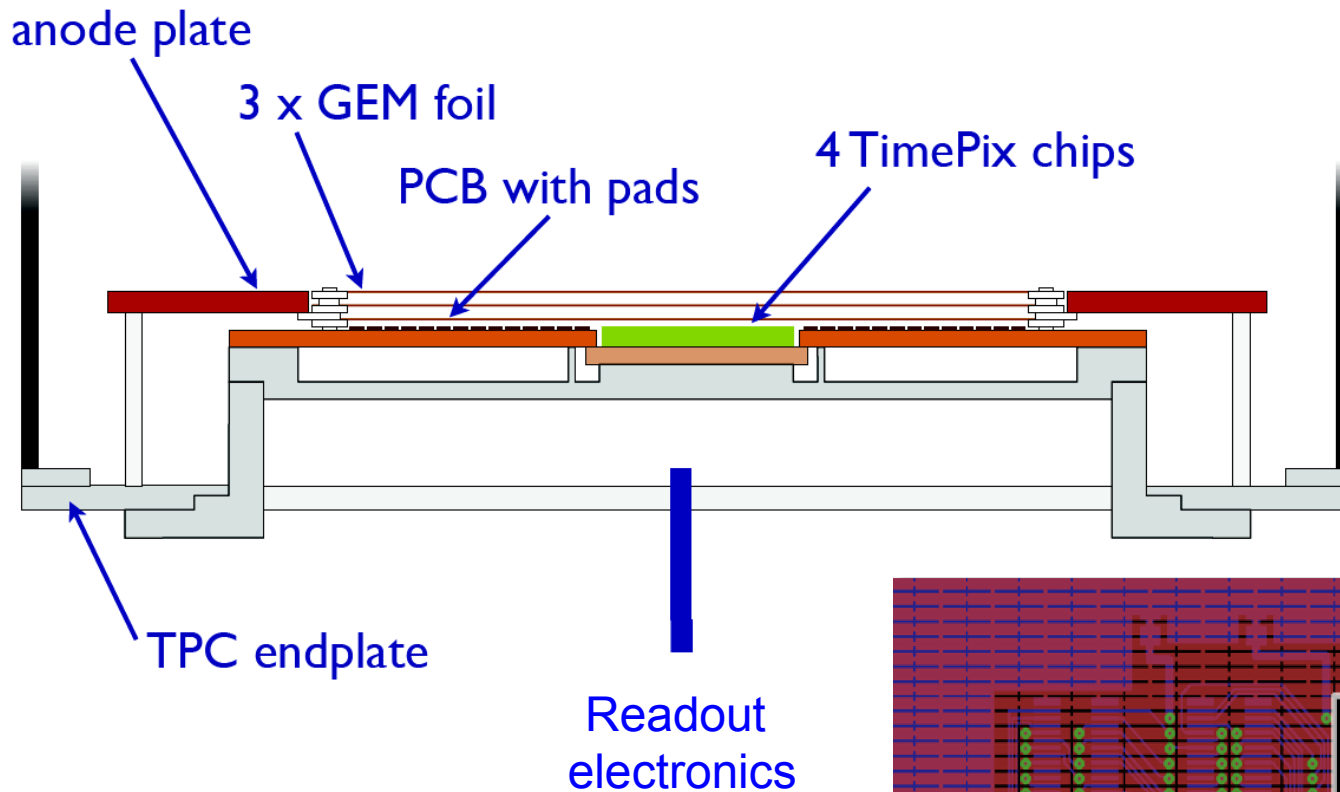
Large number of pixels may not be necessary everywhere on the TPC endcap.

Maybe only 2 rings are sufficient:

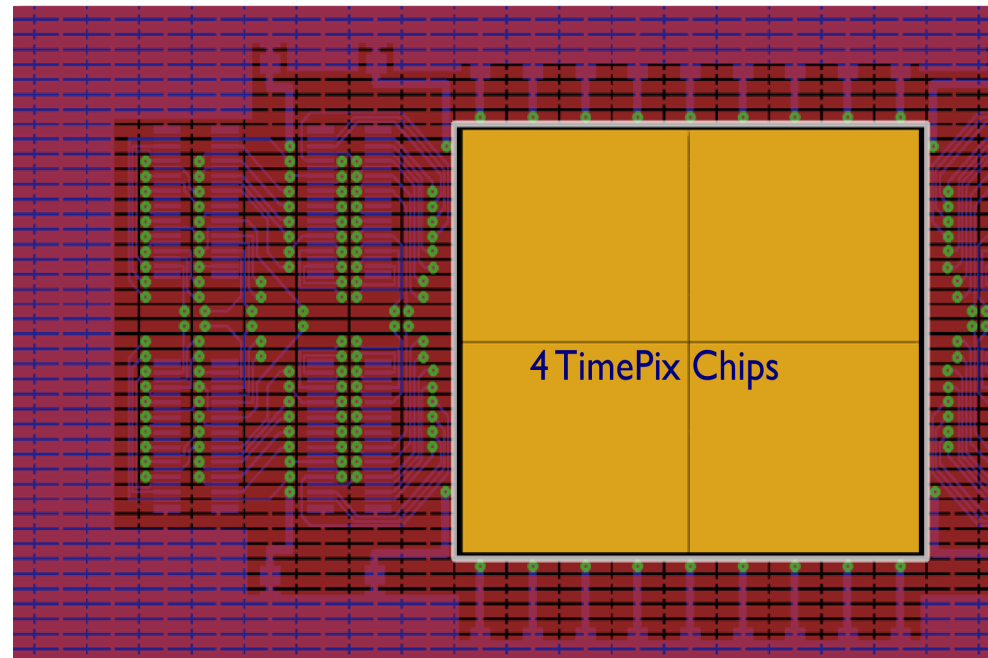


Combination of both pixels and pads on one endcap.

Test Combination of Pixels and Pads



- Pad sizes $4 \times 1 \text{ mm}^2$
connected to 256 channels
of ALTRO electronics
- 4 Timepix chips in the middle





- Detector worked very reliably
- Gas: He/CO₂ 70/30
- HV very stable except when running with high intensity hadron beam
- Synchronisation of Altro and Pixelman using EUDAQ and TLU
- Analysis has started