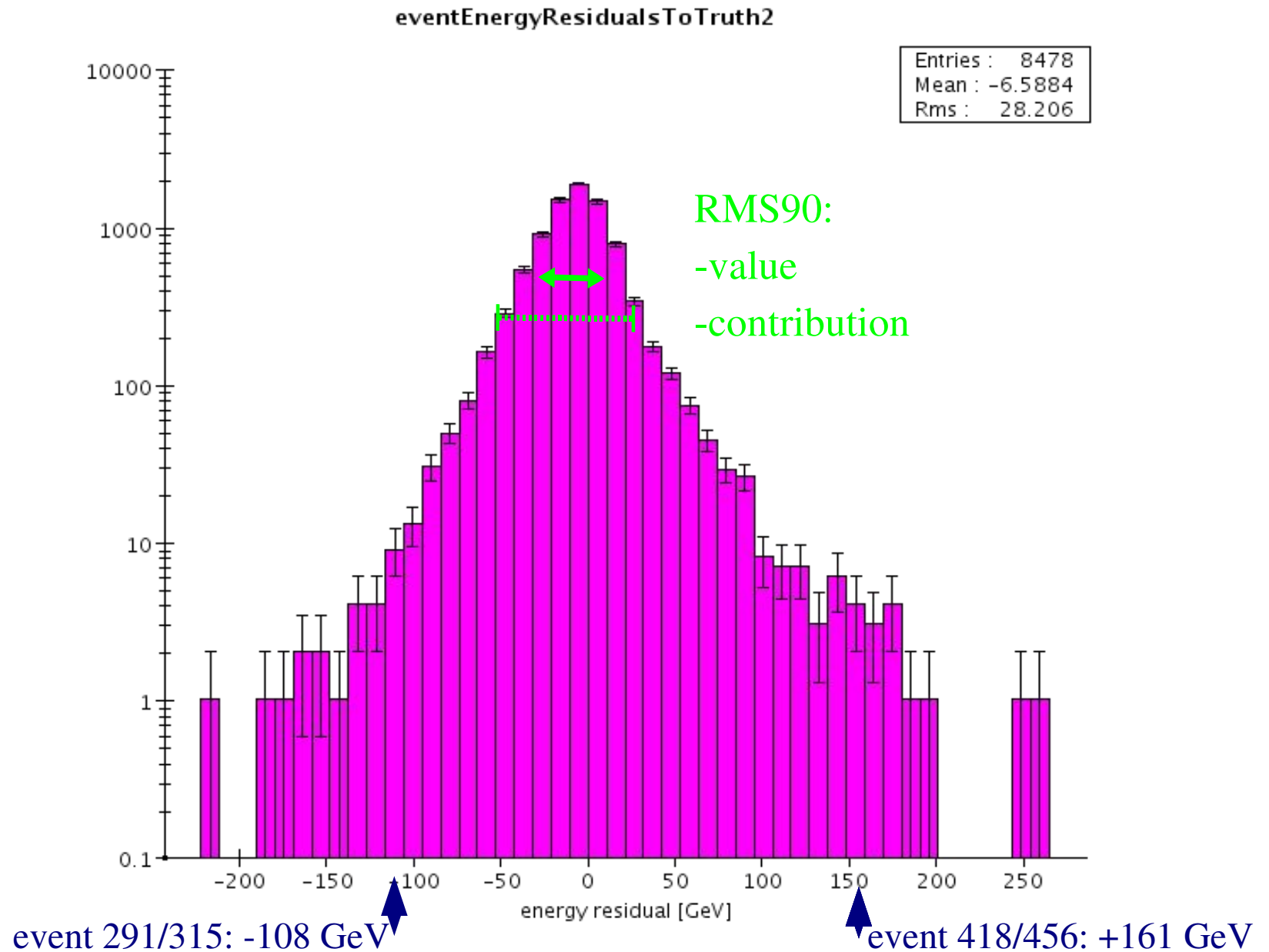


# Events with strongly deviating energy ... mistakes?

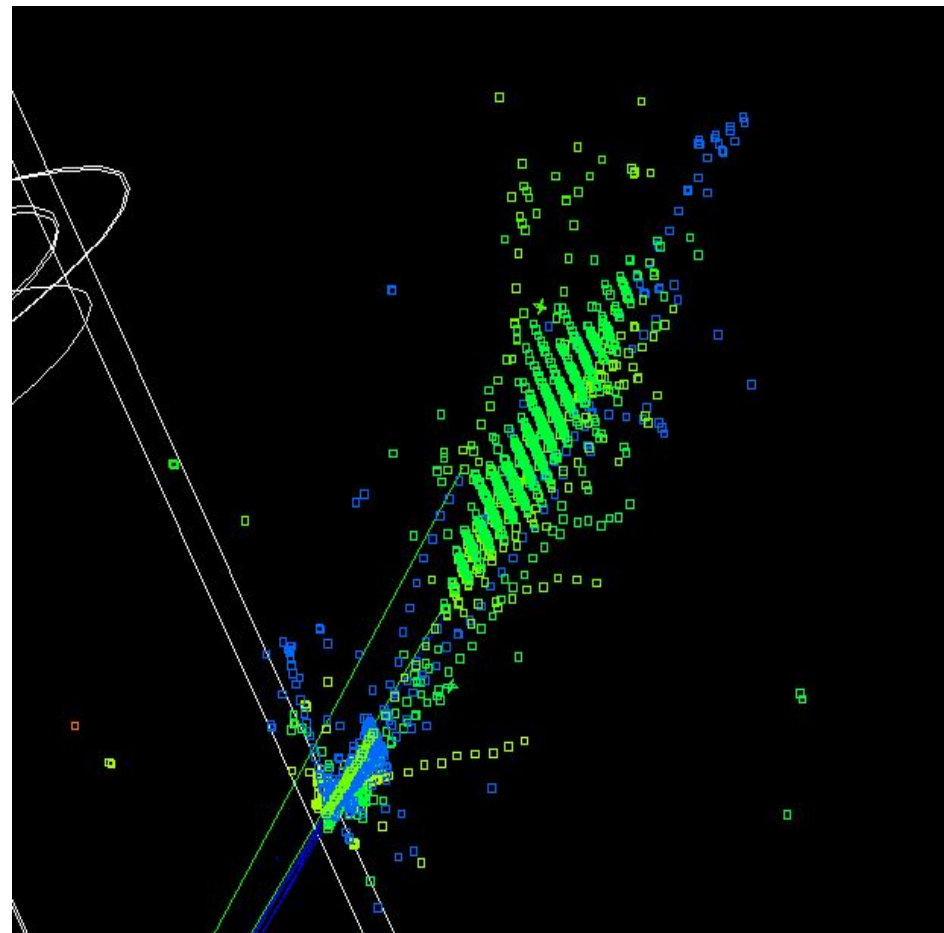
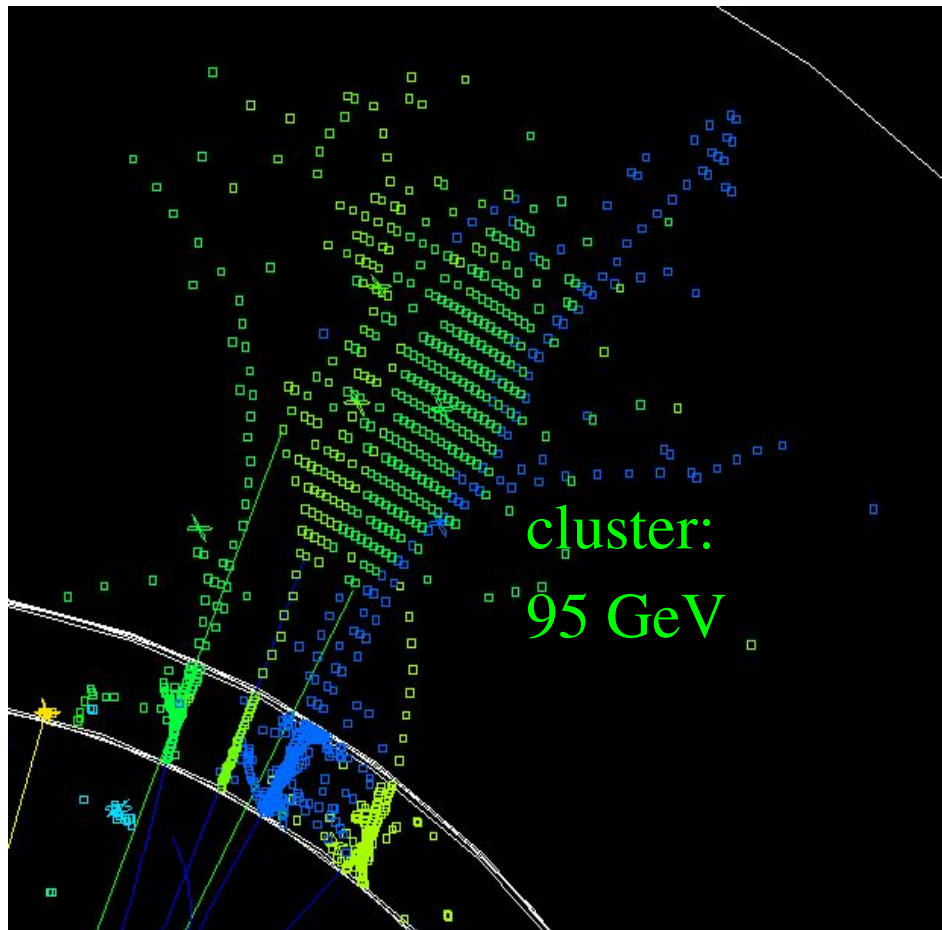
- Calculating the energy resolution
- Event 291/315
- Event 418/456
- Plans

# Calculating the energy resolution



# 500 GeV qq, event 291/315

Neutral hadron with 167 GeV is reconstructed as 84 GeV



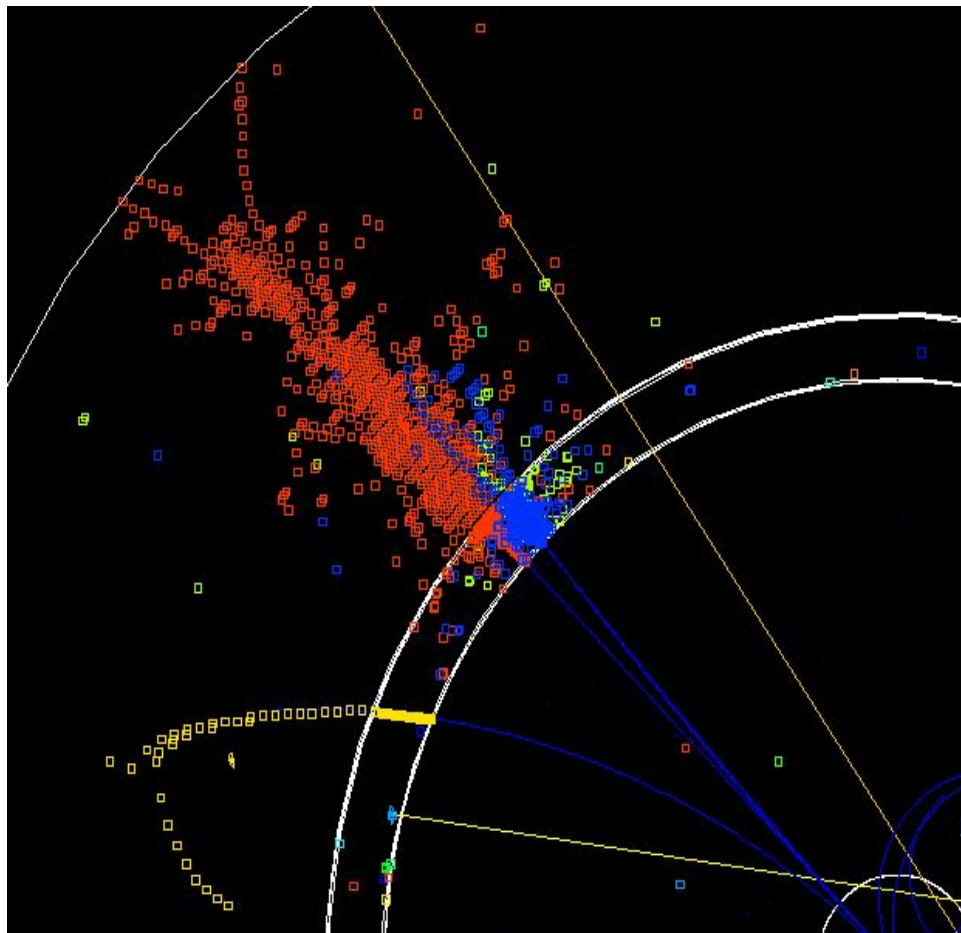
hadron: 167 GeV

side view: rather planar shape

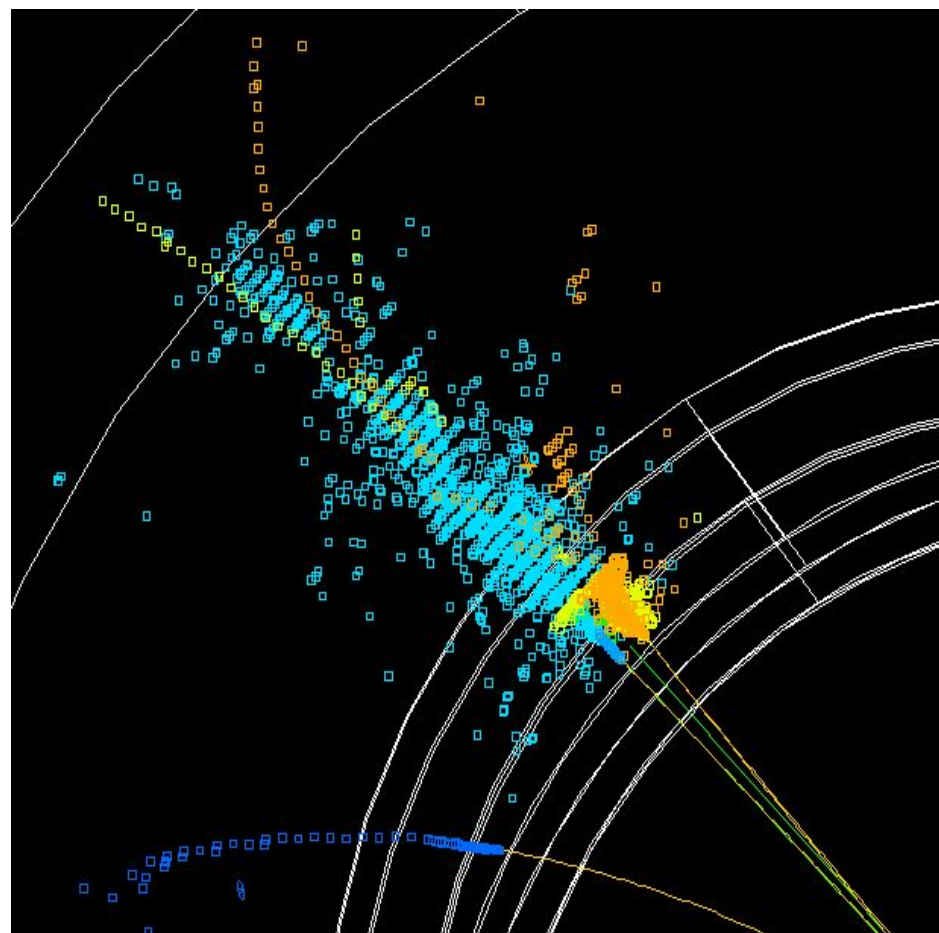
(truth info and cheat clusters including shared hits)

# 500 GeV qq, event 418/456

(cylindrical shape)



Input: 3 charged hadrons  
191, 21, 31 GeV



Reconstruction: 191, 21, 31 GeV  
+ incorrect 164, 2 GeV neutrals

# Conclusion

- Events with large deviating reconstructed energy seem worthwhile to be studied
- Also: Committed my code

# Plans

- Quantify improvement potential by comparing to perfect pattern recognition