

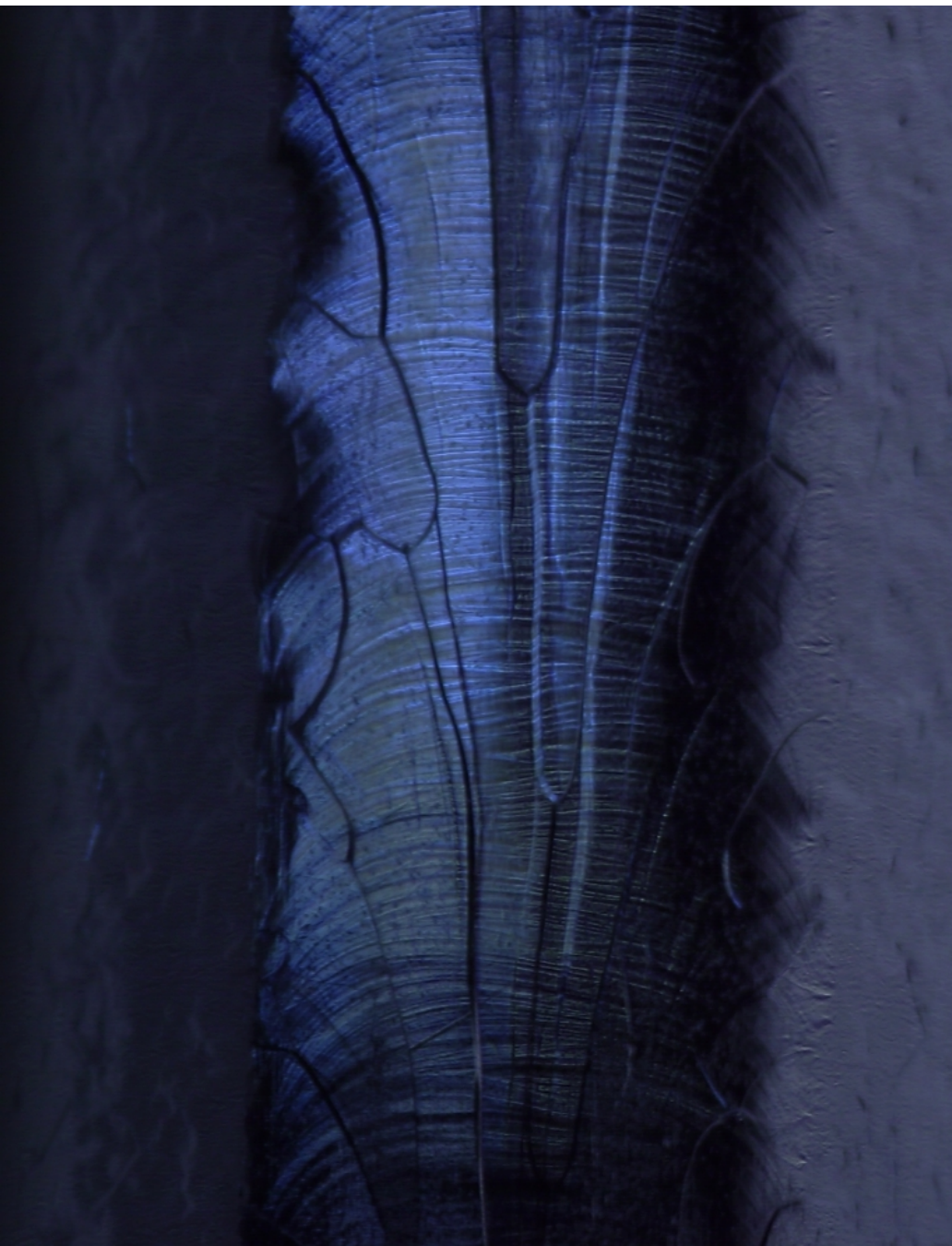
Iris defect in TB9RI026

Dmitri A. Sergatskov
(das@fnal.gov)

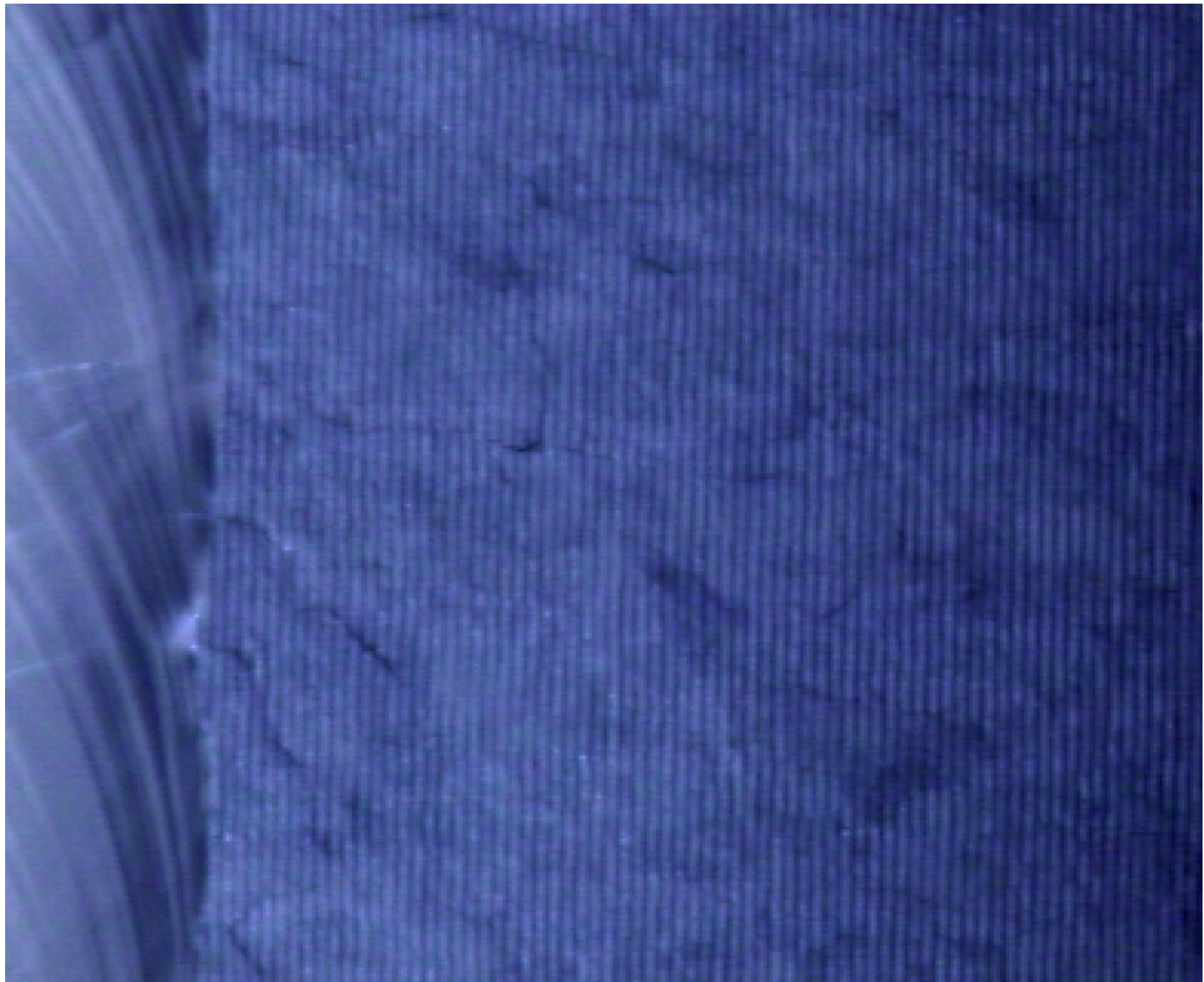
Monday Morning Meeting
2010.03.01

Inspection “as-received” (2010.01.20)

- No obvious defect
- All irises had signs of post-weld machining (grinding)
- Equator weld-prep area has clear traces from cutting tool (not a defect by itself)



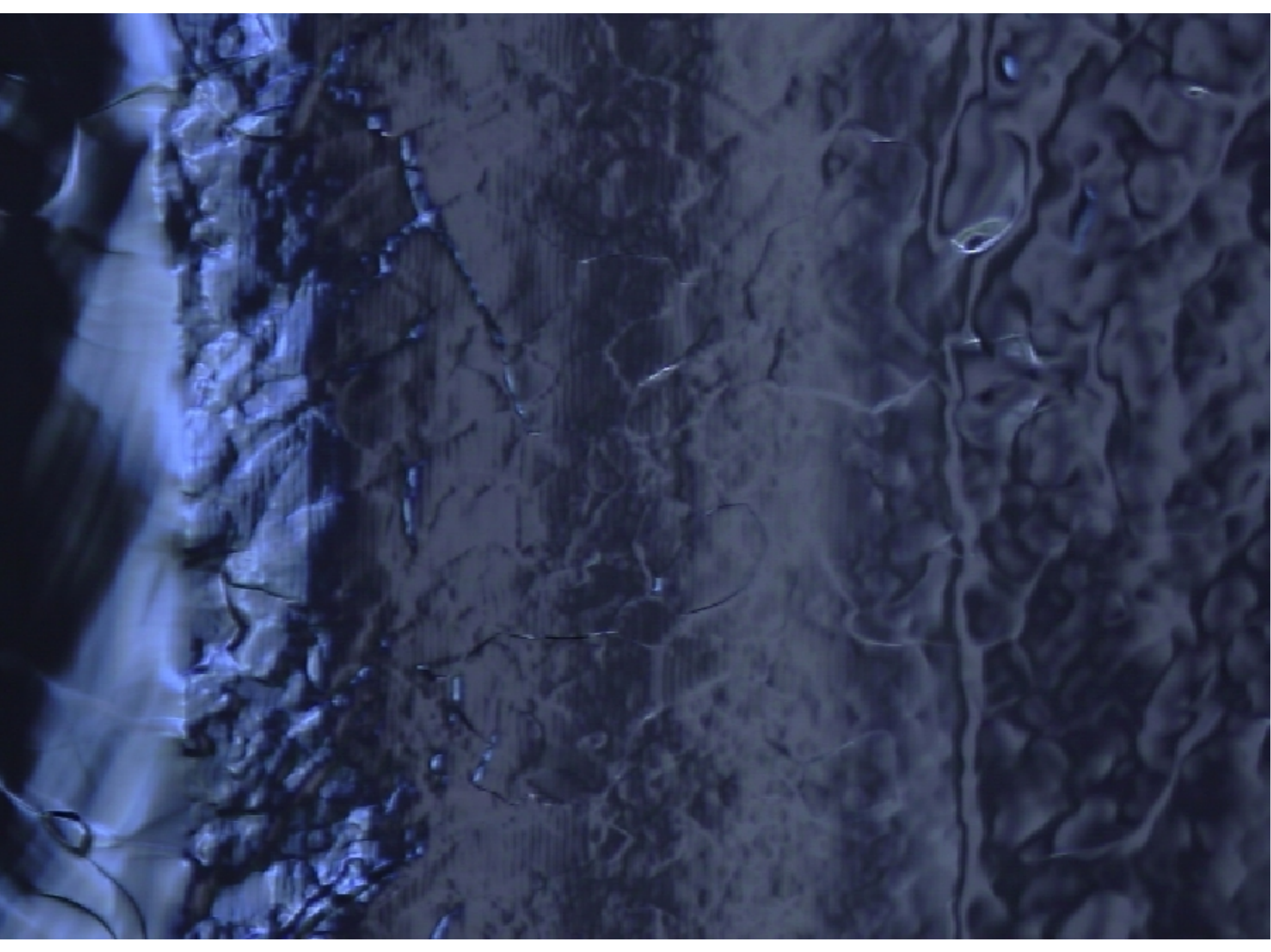
Pristine (left) and partially machined (right) iris weld

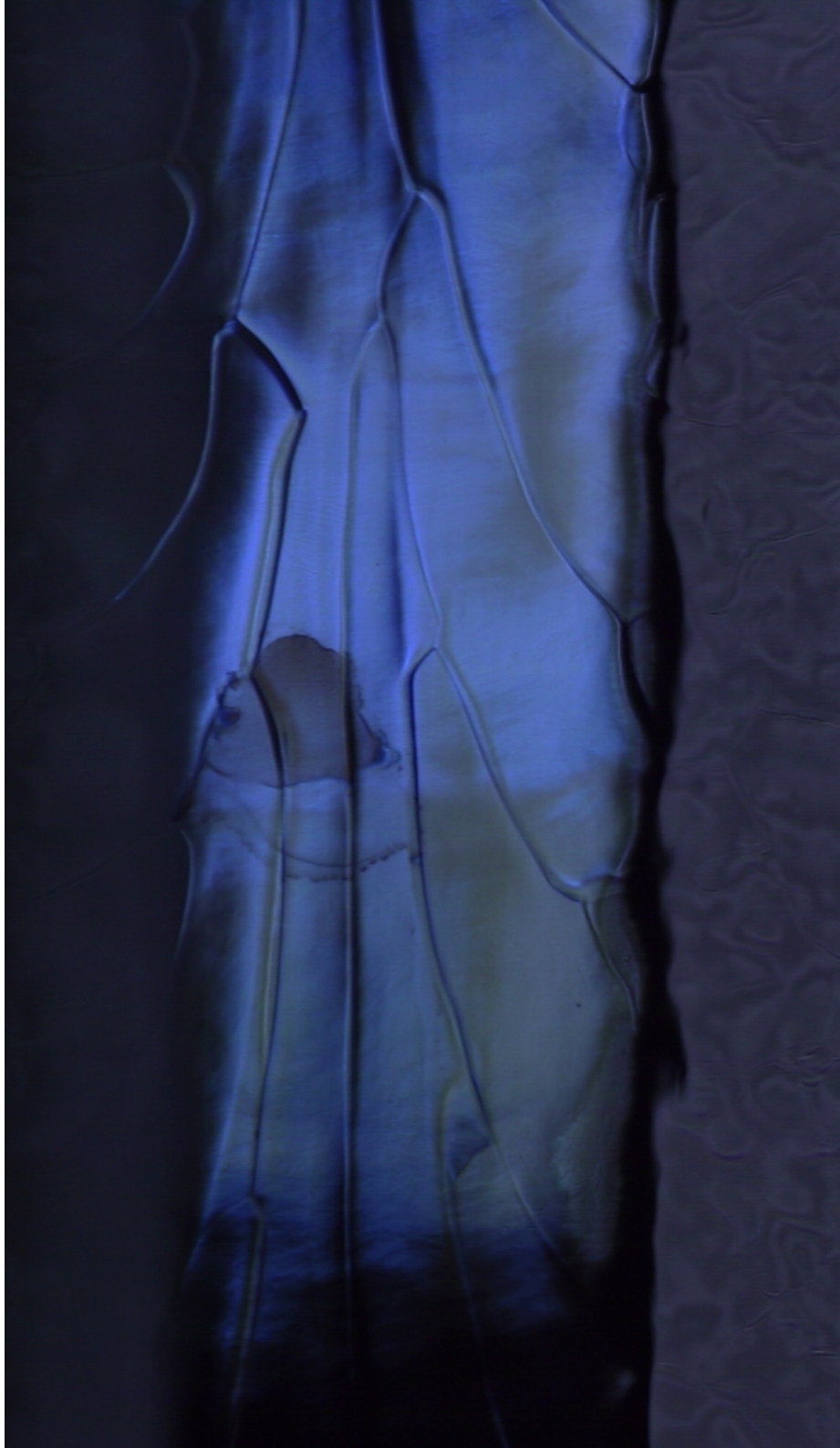


Traces of cutting tool on equator weld prep. ~30 micrometers (~0.001") period

After first EP (2010.02.01)

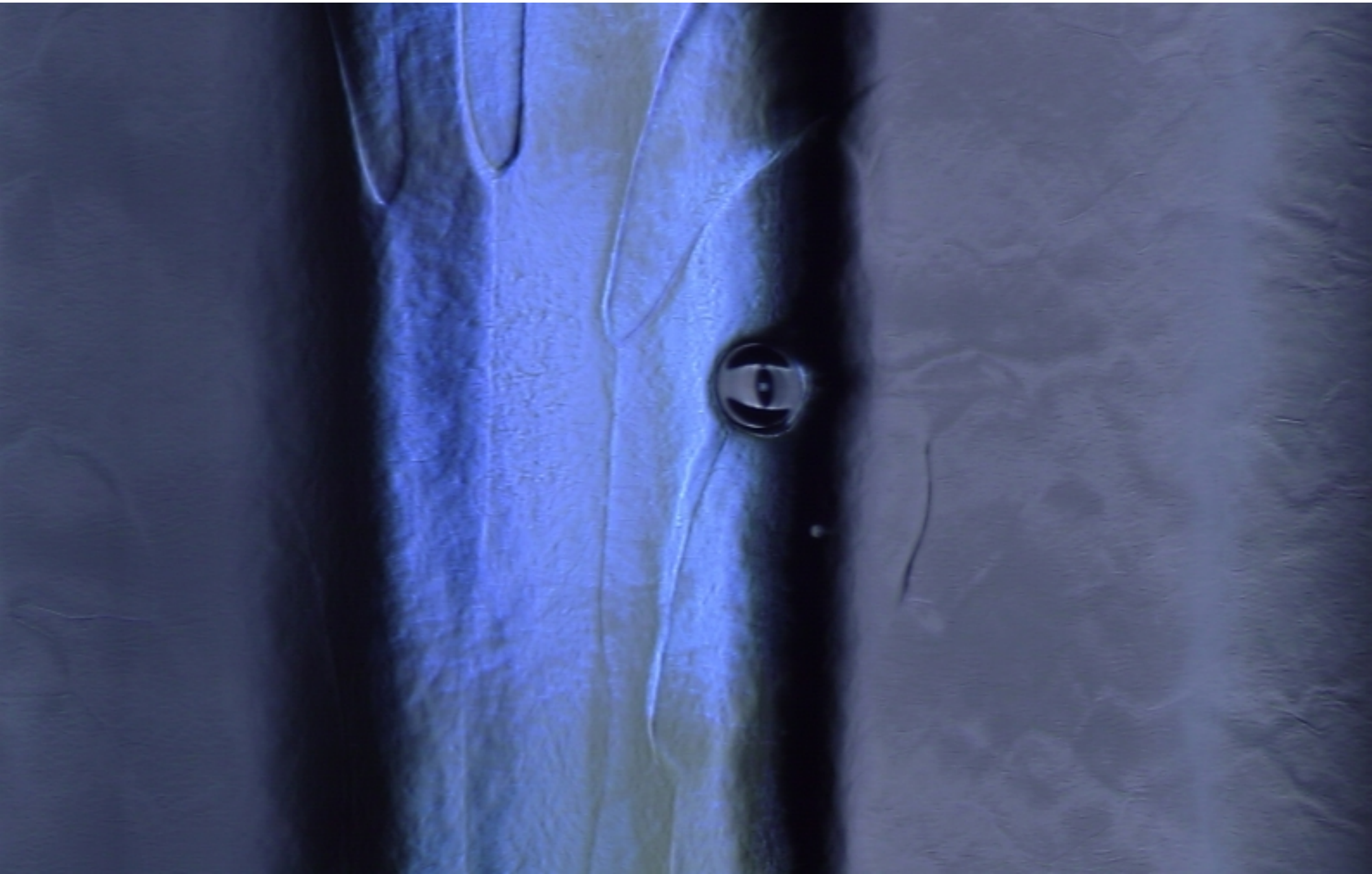
- Surface does not look as good as expected after EP
- Multiple dark spots
- Tooling marks still visible on weld prep area
- Machined iris areas show excessive pitting





After second EP (2010.02.19)

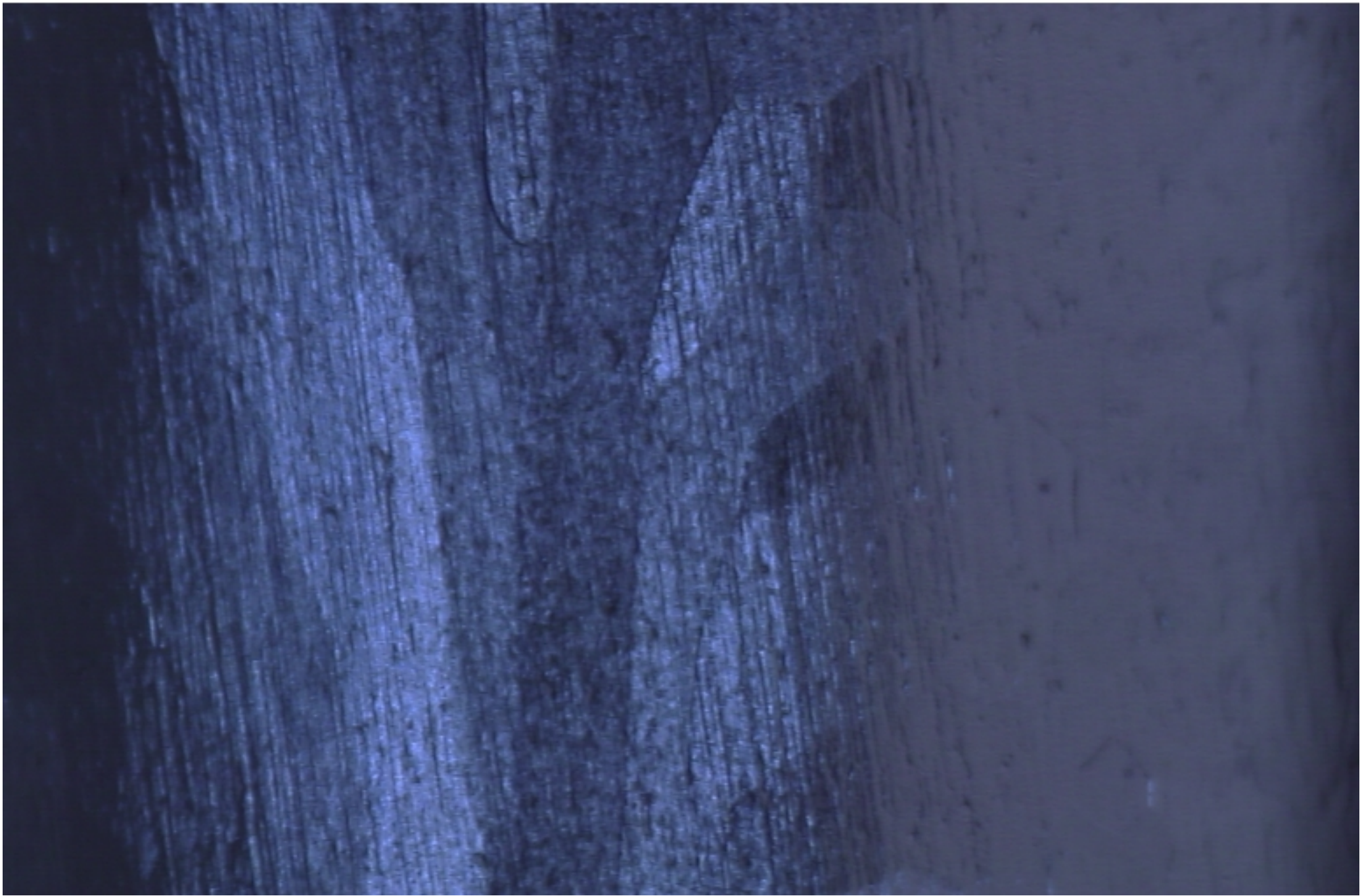
- Surface looks better (as expected)
- Multiple dark/dirt spots are gone
- Tooling marks mostly gone
- **A large pit (~350 umeters) detected on 8-to-9 iris.**



After 2nd EP. Iris89 114 deg.



After 1st EP



As received