

# **CLIC Schedule**

**K. Foraz**

CLIC10 Workshop

18-22 October 2009

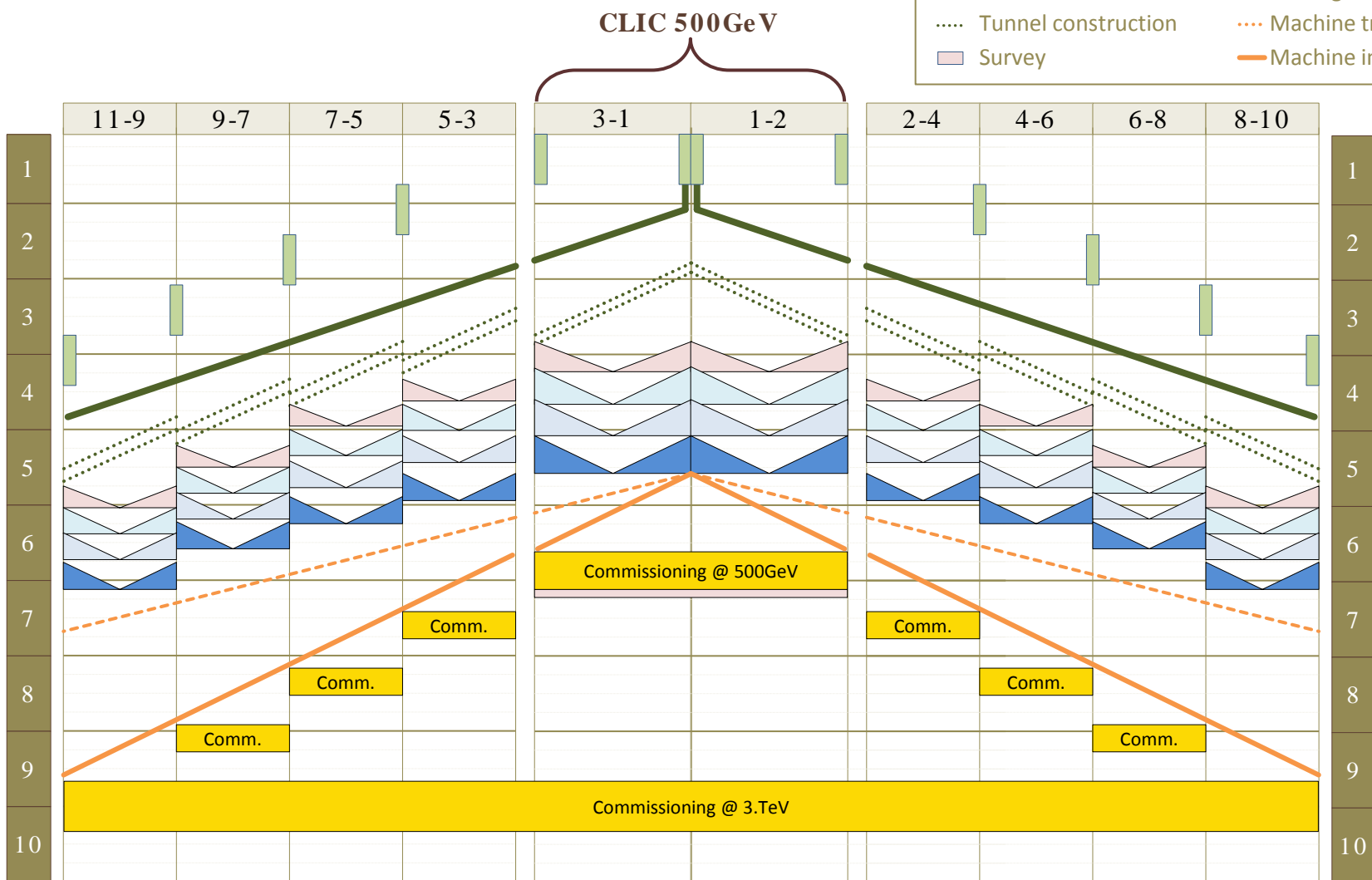
- **Main LINAC**
  - Schedule
  - Installation versus Module production
  - Resources
  
- **Injectors**
  - Method
  - Schedules
  - Resources
  
- **Global**
  - Schedule
  - Rough estimation of resources

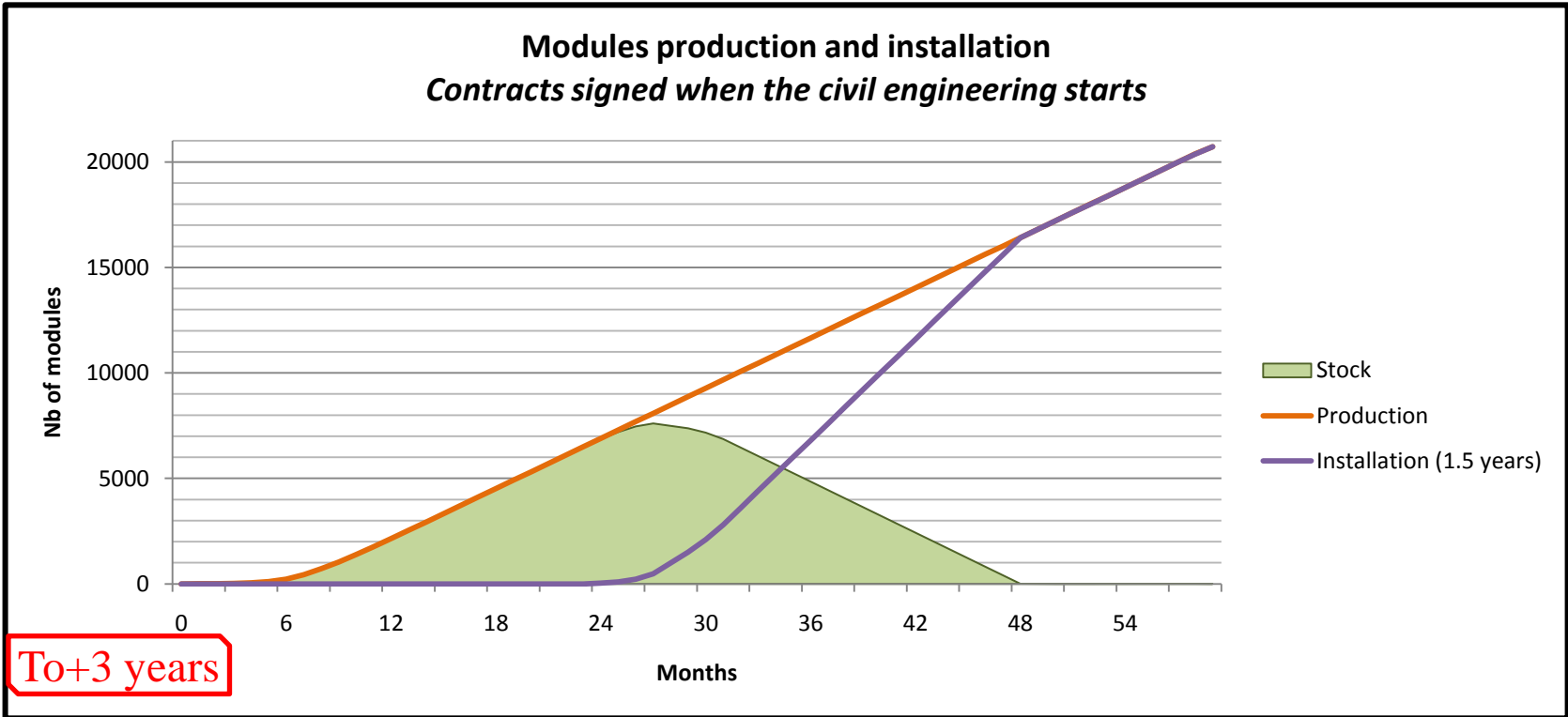


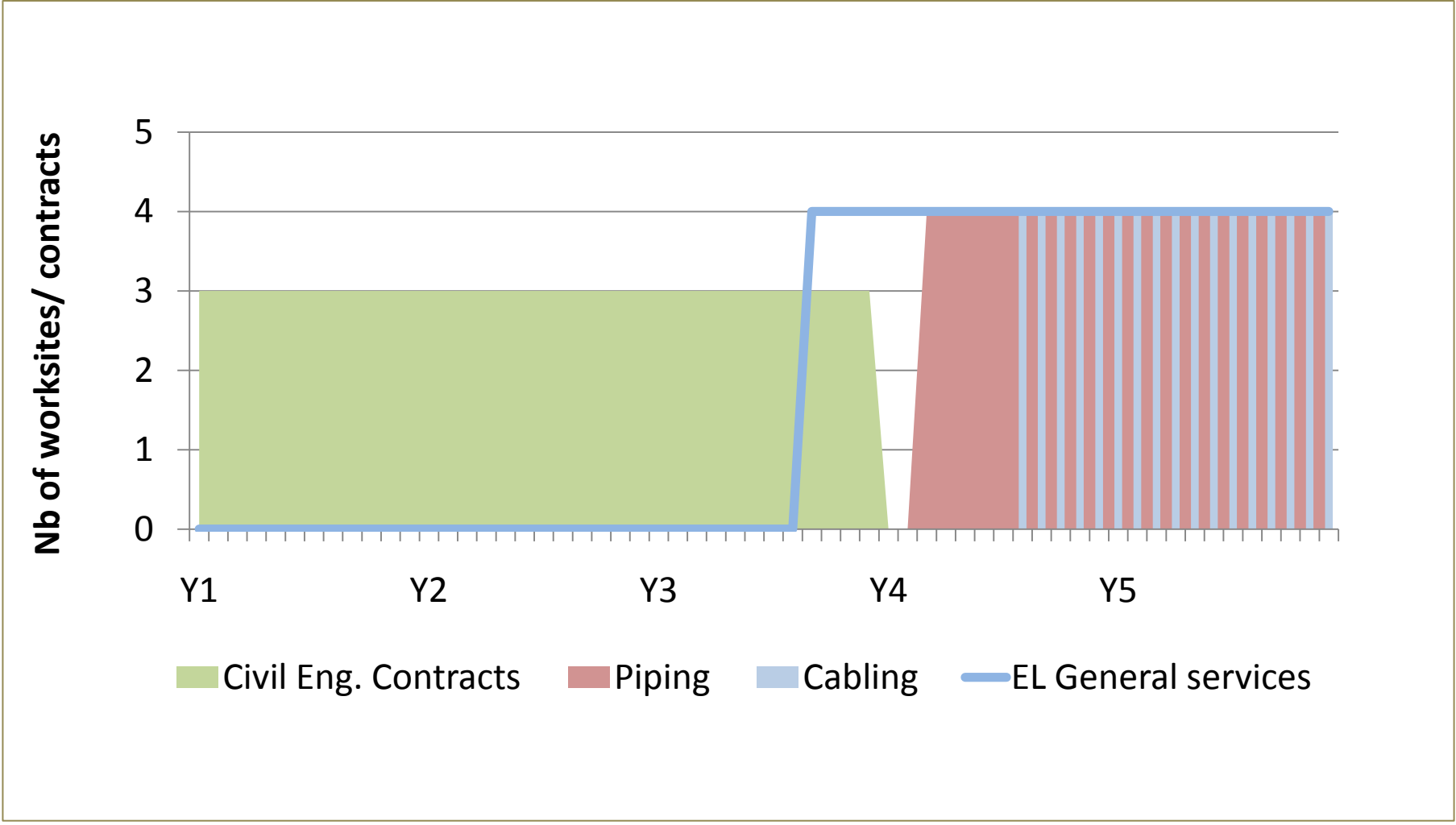
# Main LINAC – Construction & installation Schedule

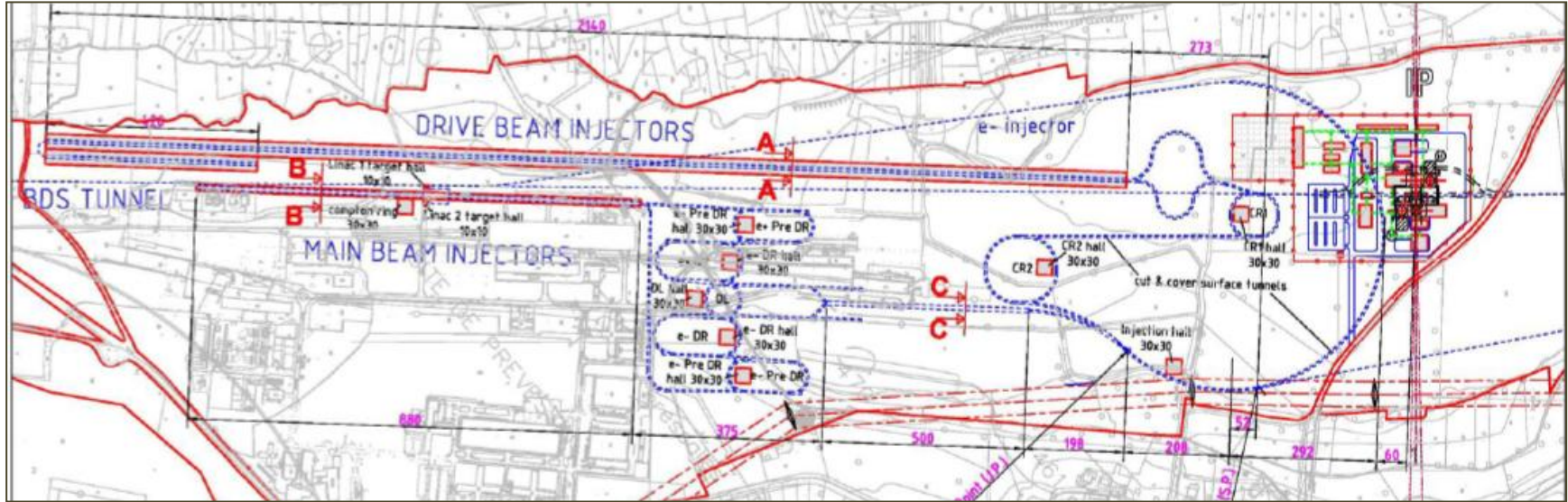


- Site installation
- Shaft construction
- Tunnel excavation
- Tunnel construction
- Survey
- El. Gen. services
- Piping
- Cabling
- Machine transport
- Machine inst.

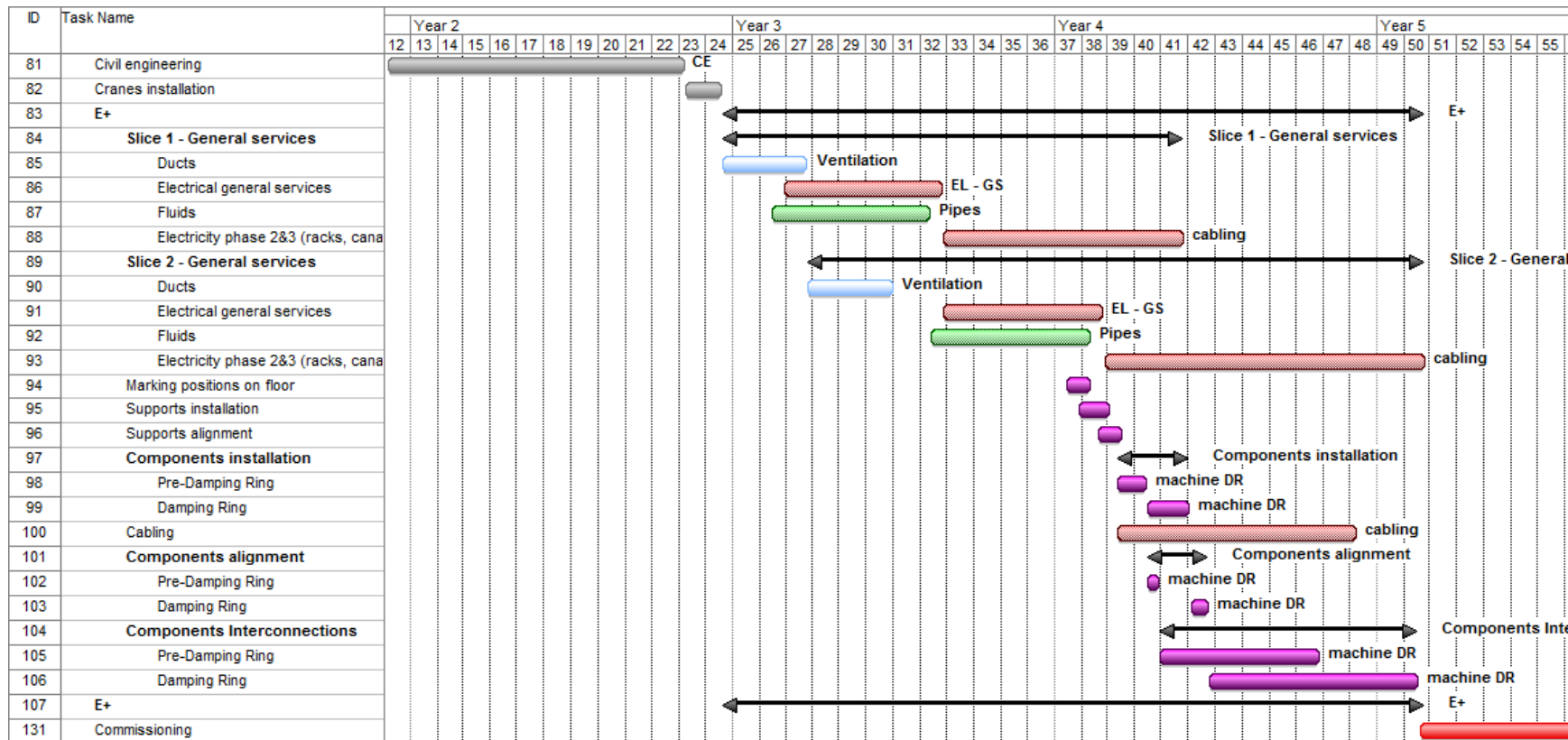








Schedules drawn with the experience on other machines, especially LINAC4 installation, which is just starting

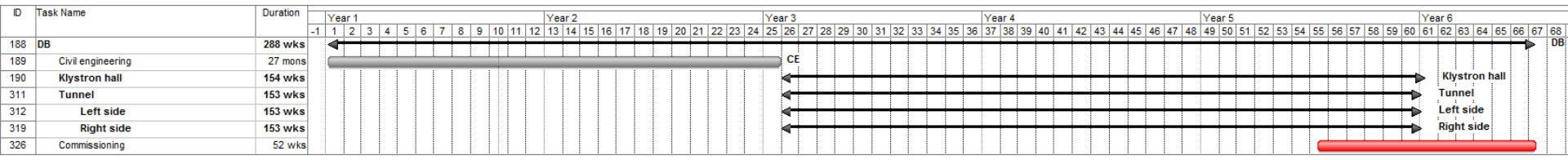








- Same strategy than for the Main Beam...but 2140 m !!!
  - Surface building splitted into 12 splices ( 3 \* 4)
  - Tunnel: 2 entries
  - 35 months

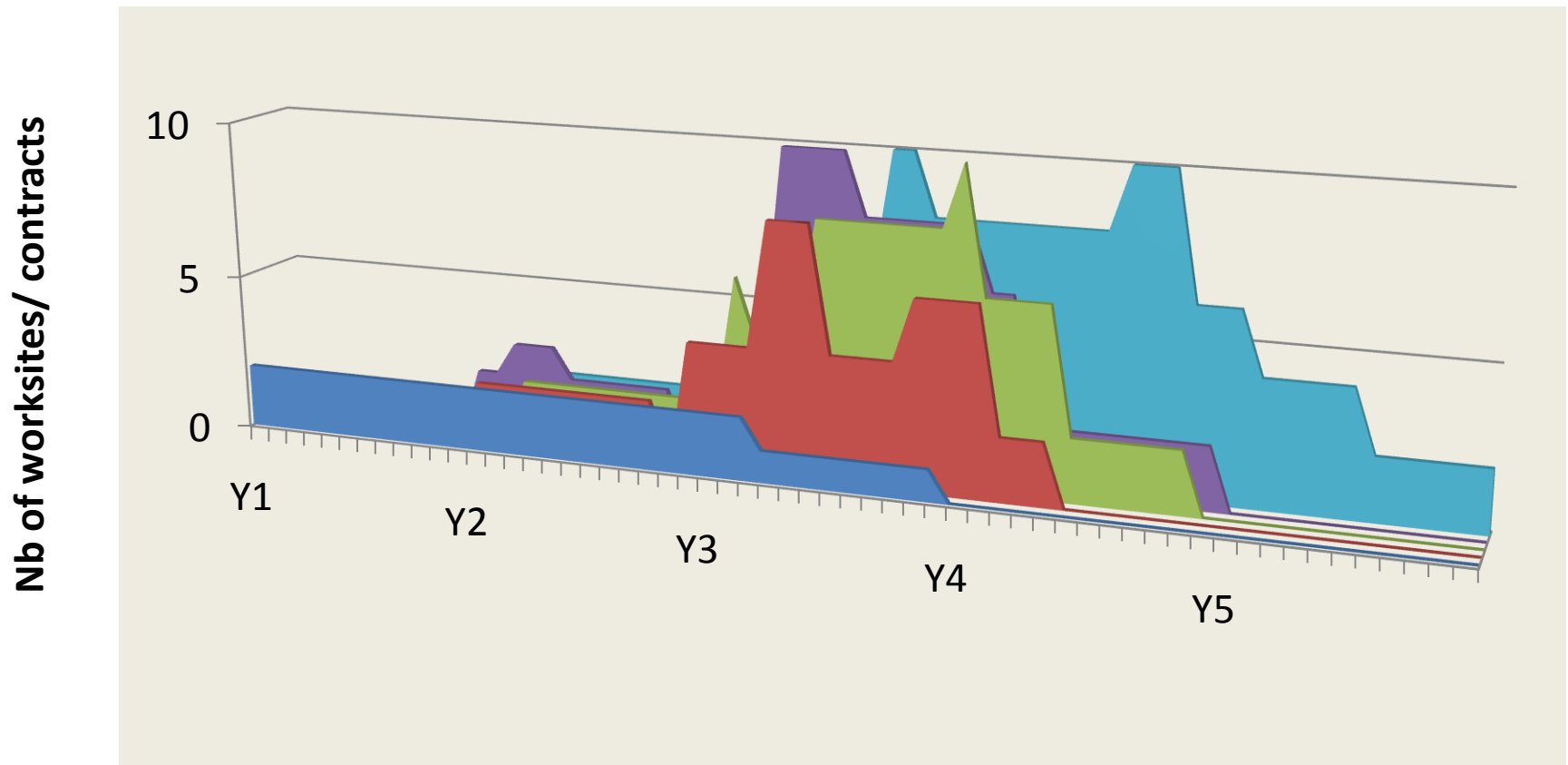




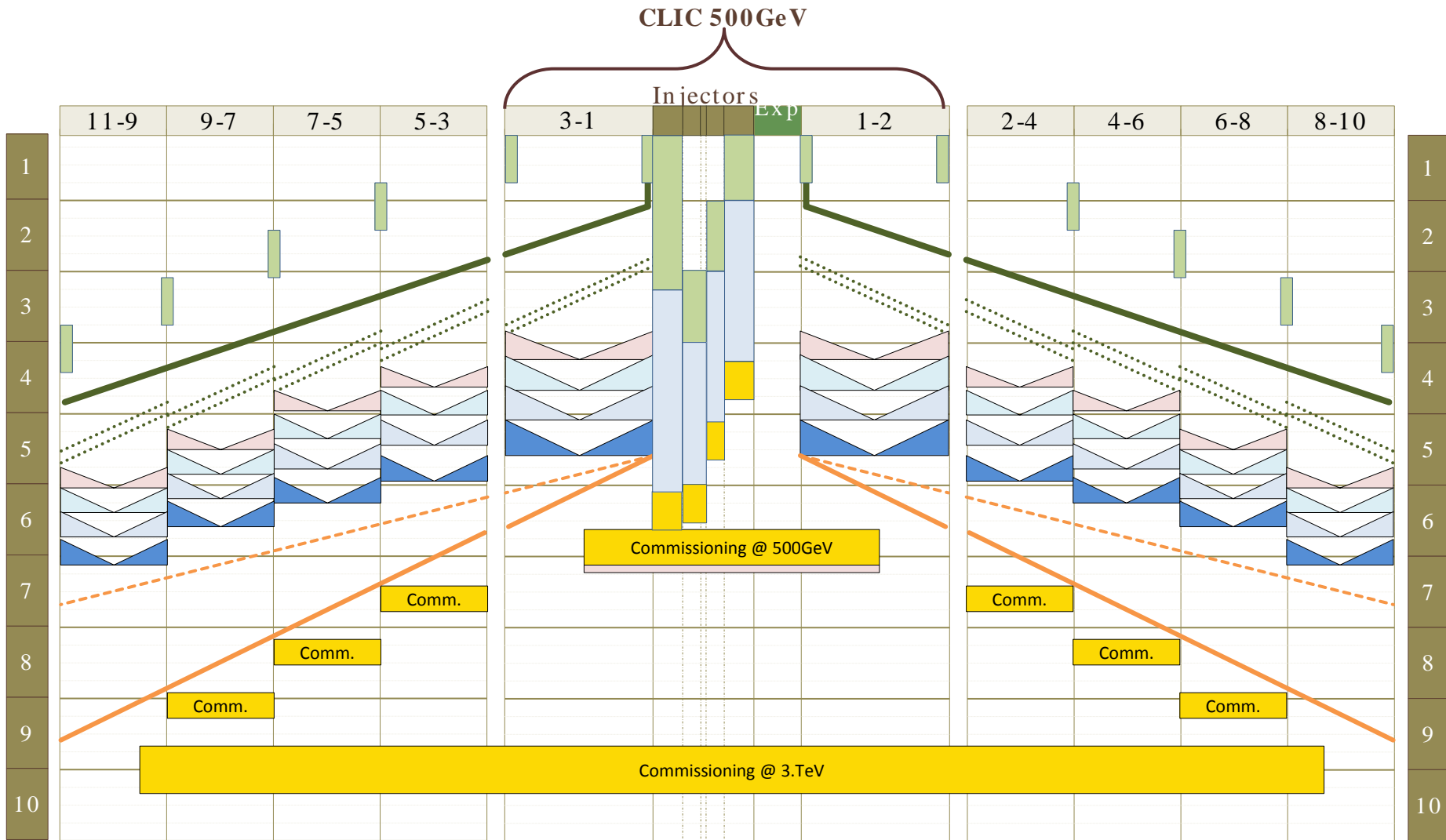
# Injectors – Summary schedule

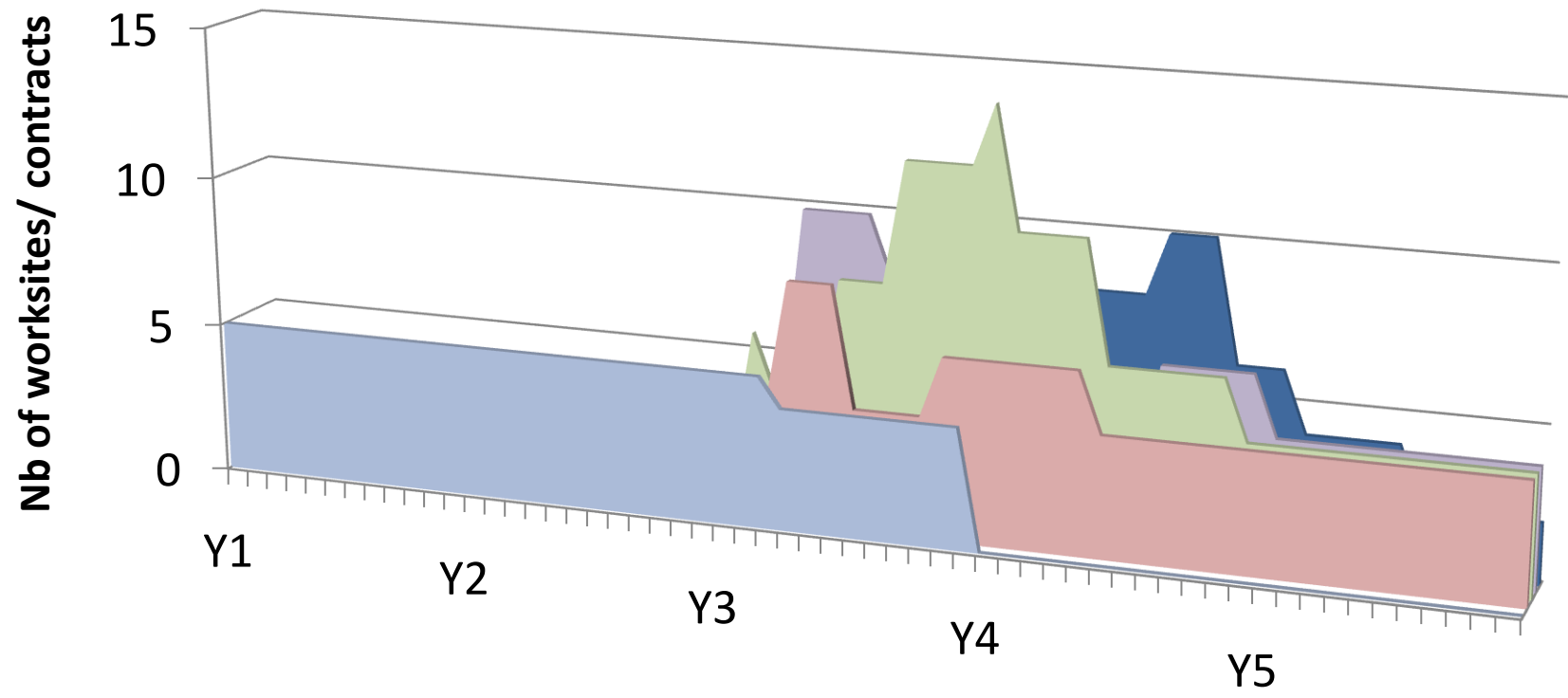


	DB	CR	▼	DR	MB	
1	Civil Eng.				Civil Eng.	1
2				Civil Eng.	Installation	2
3	Installation	Civil Eng.		Inst.		
4			Inst.		Com.	4
5					Com.	
6		Com.	Com.			
7						7
8						8
9						9
10						10



■ Civil Eng. Contracts ■ Ventilation worksites ■ Piping ■ EL General services ■ Cabling





■ Civil Eng. Contracts ■ Ventilation worksites ■ Piping ■ EL Ggeneral services ■ Cabling