

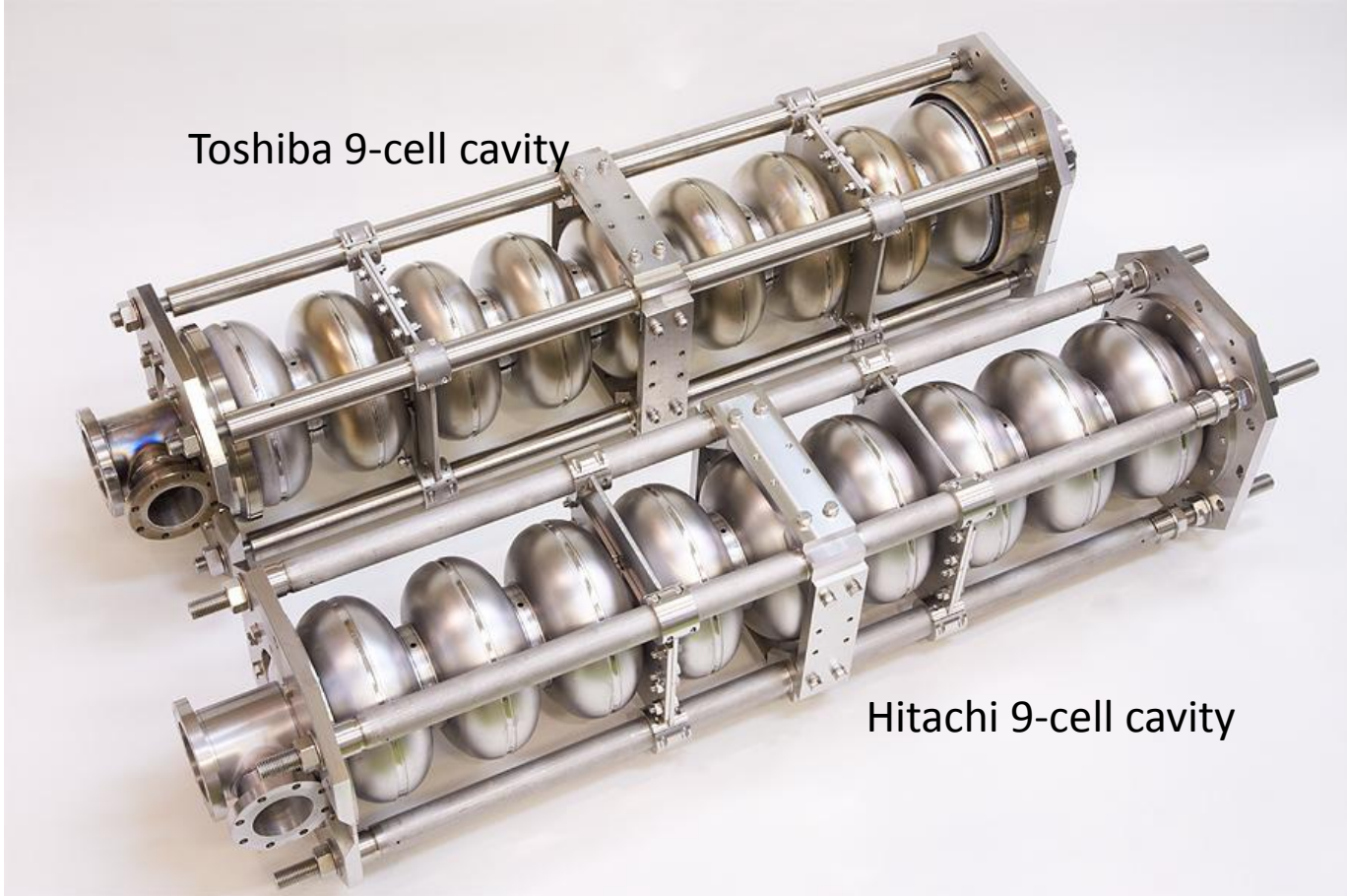
Cavity status; recent KEK activities

50 cavities; MHI010, MHI011 are on a way of EP-VT , result will be later this week.

- (1) **KEK-Hitachi collabration, KEK-Toshiba collaboration on cavity development;**
9-cell cavity with no HOM couplers, but Input-port and monitor-port.
Inspection was done, RF measurement are on-going
Welding seam; Hitachi is fairly good,
Toshiba has pits and bumps mainly on cell#1.
- (2) **KEK-FNAL collaboration; on molding**
Bumps replica of AES001 taken at FNAL during TTC were analyzed
by using profiler micro-scope. (bumps are heating spot at 22MV/m)
- (3) **KEK-JLAB collaboration; JLAB LG-01 for local grinding**
local grinding and 50um EP finish were over.
Then molding again and found grinding edge has still little bit sharp.
We will have more grinding on edge.
- (4) **KEK-Saclay collaboration; on 1DE1 single cell sponge-wipe possibility**
STF-EP system create brown stains on iris, source of field emission maybe.
we tried 7 times of EP with different water-rinse condition, not yet solved.

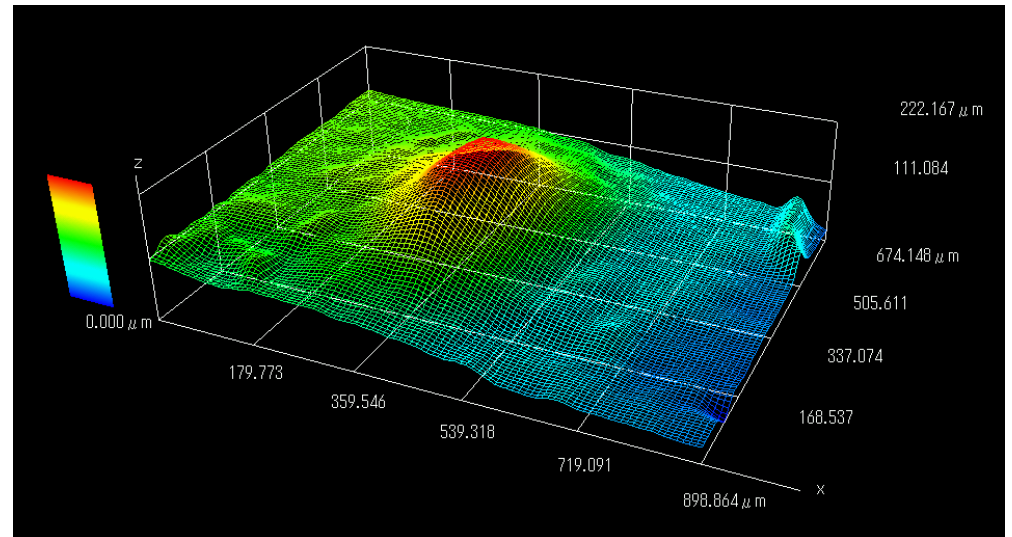
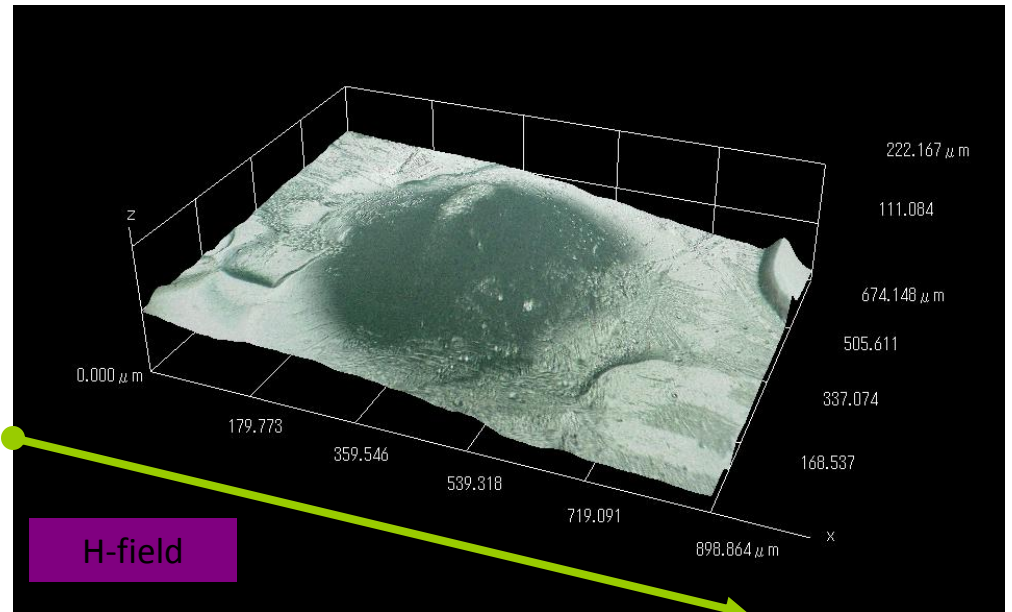
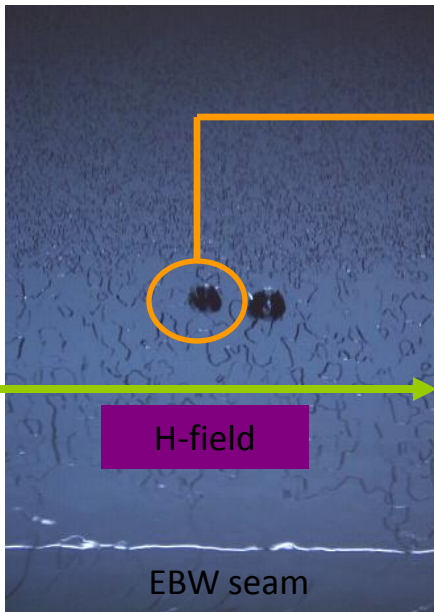
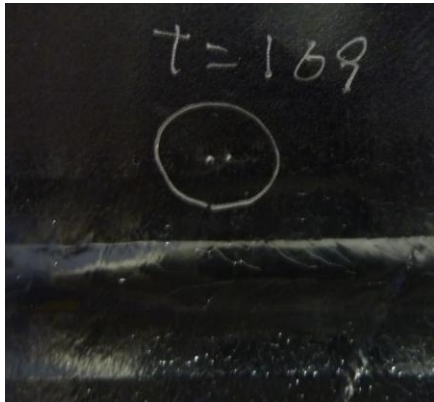
Toshiba 9-cell cavity

Hitachi 9-cell cavity



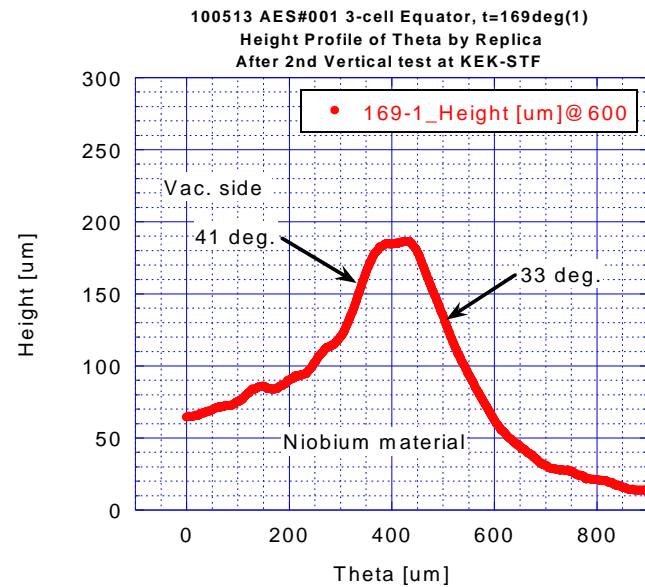
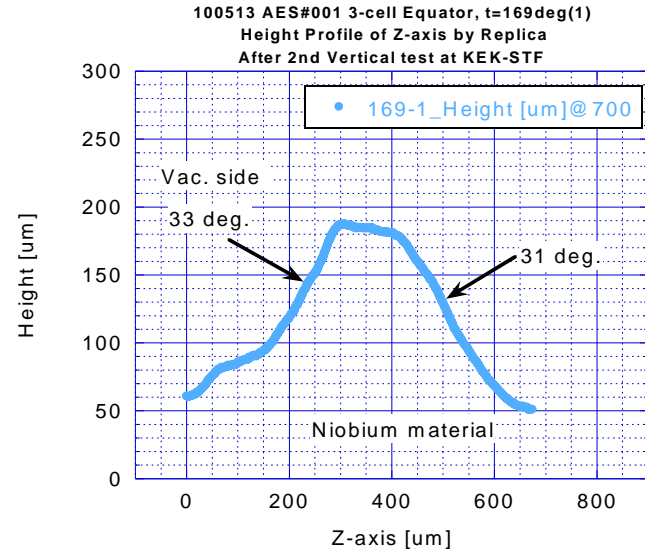
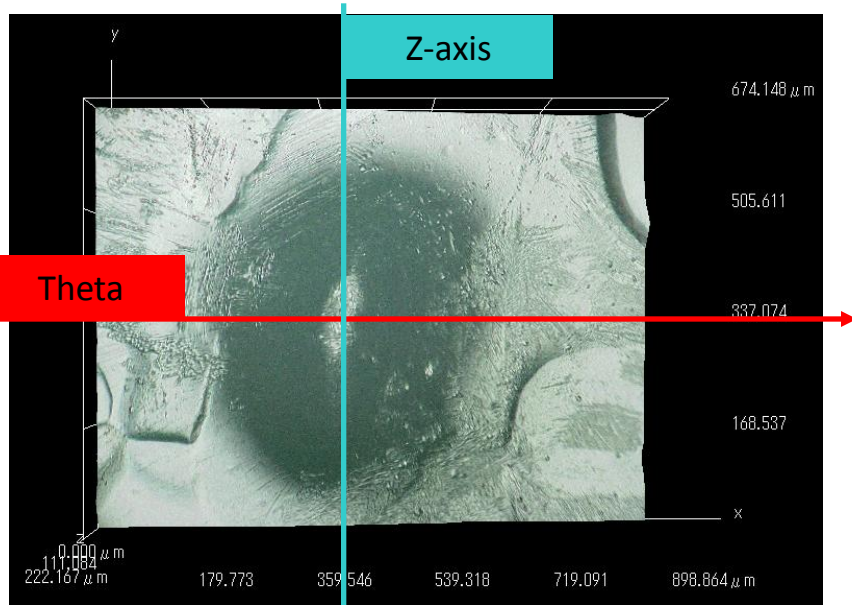
AES#001 3-cell Equator, t=169-1 deg.

Z-axis



To 0deg

AES#001 3-cell Equator, t=169-1 deg. : Profile



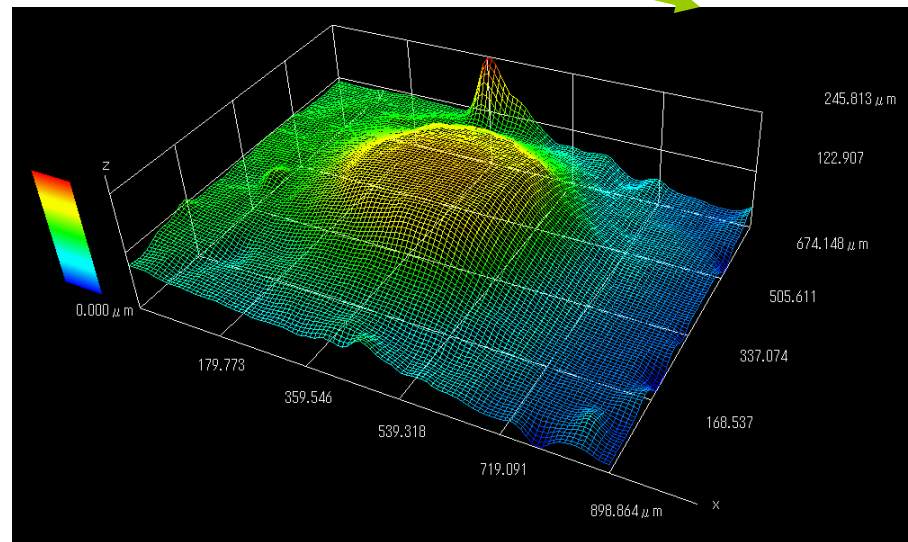
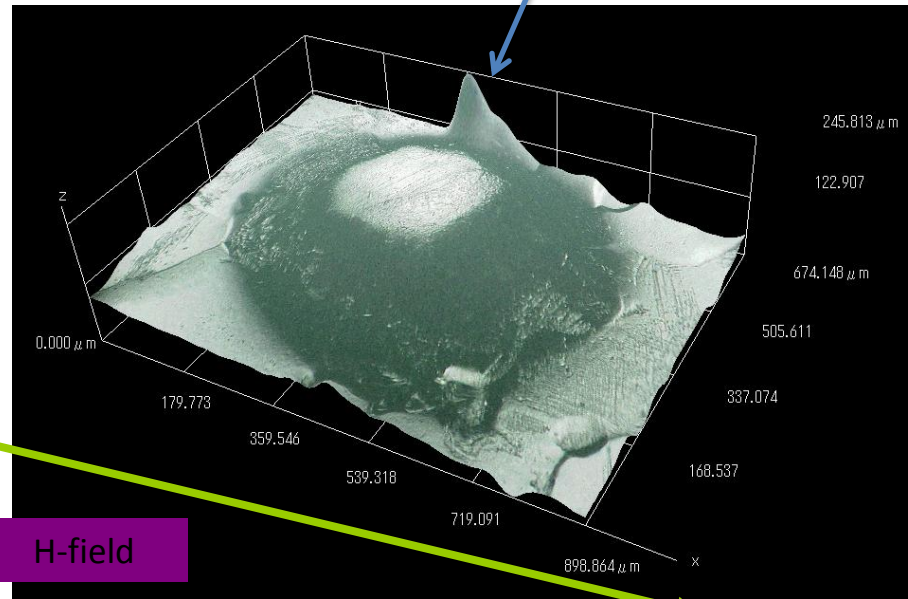
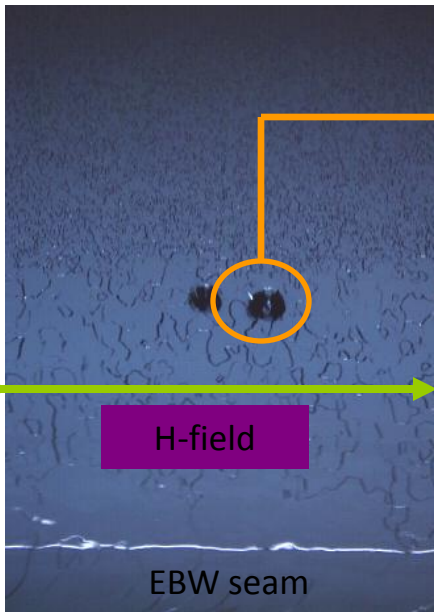
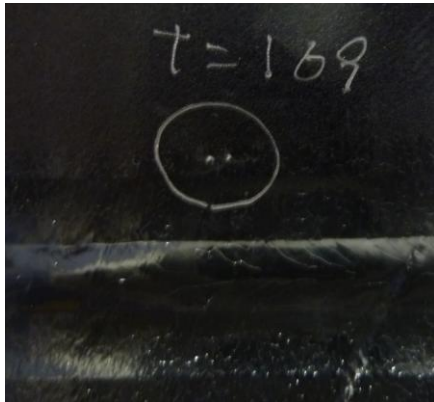
Surface gradient : 41 degree. and 33 degree

Kyoto-camera could only measure surface gradient less than 22degree. So it could not measure.

AES#001 3-cell Equator, t=169-2 deg.

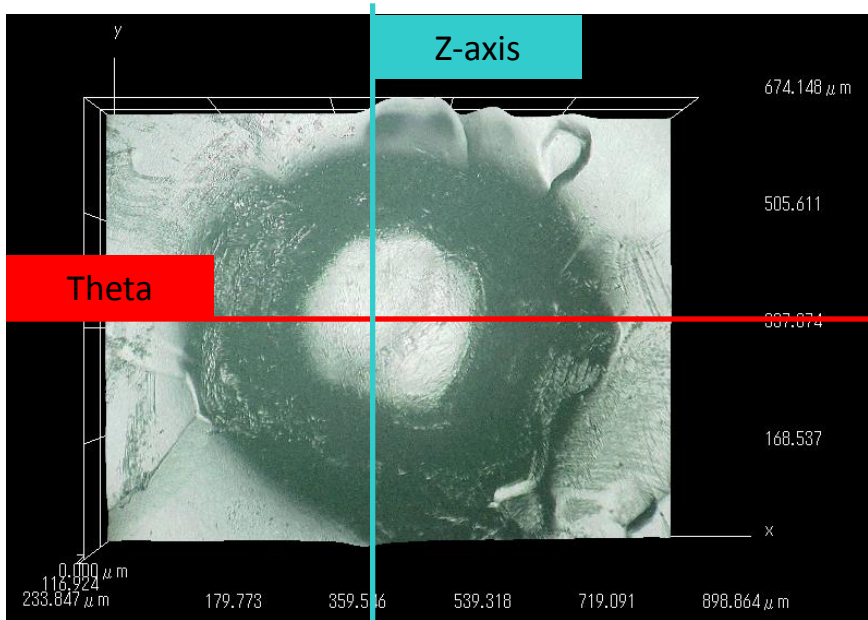
this is fake measurement

Z-axis



STF

AES#001 3-cell Equator, t=169-2 deg. : Profile



H-field of TM010

Surface gradient : 27 degree. and 34 degree

