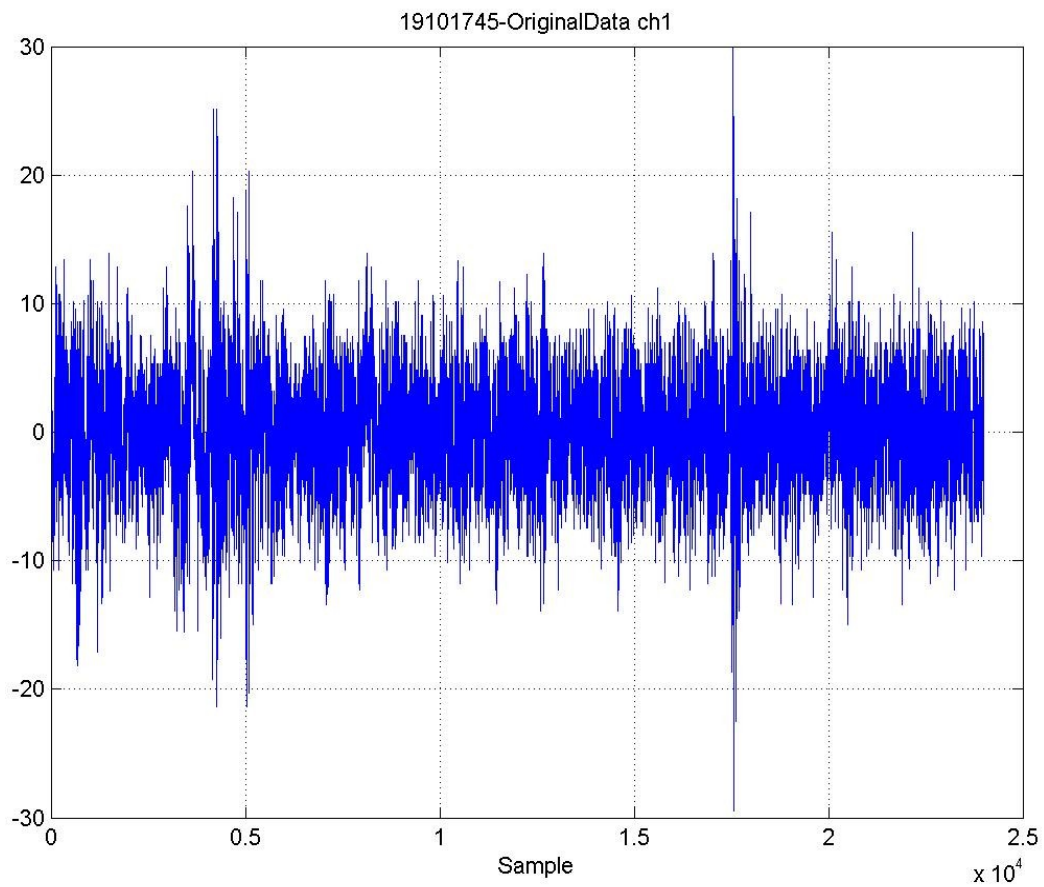
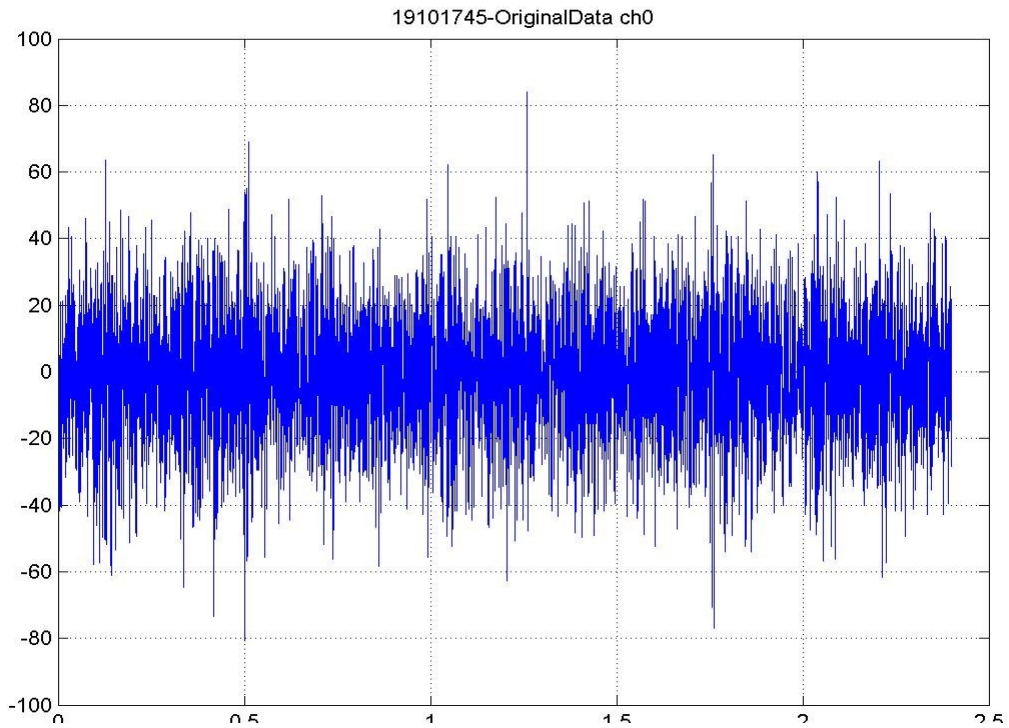


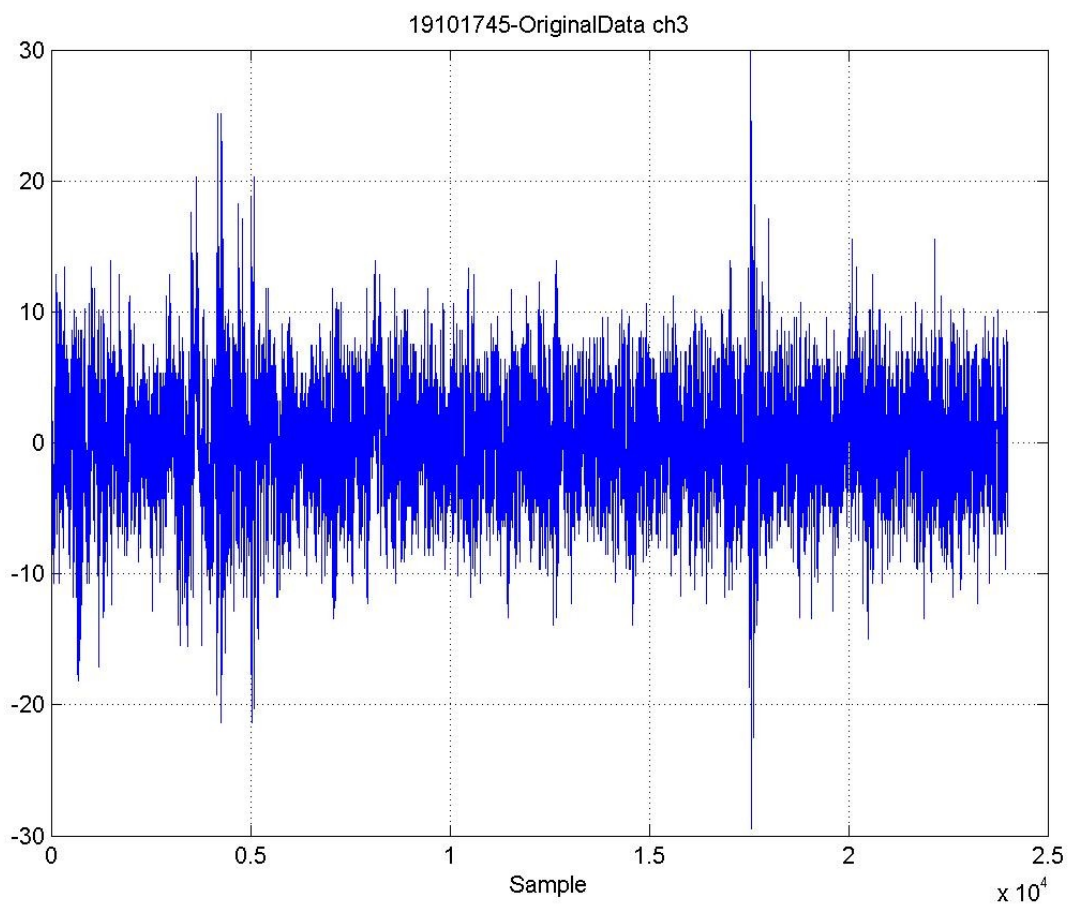
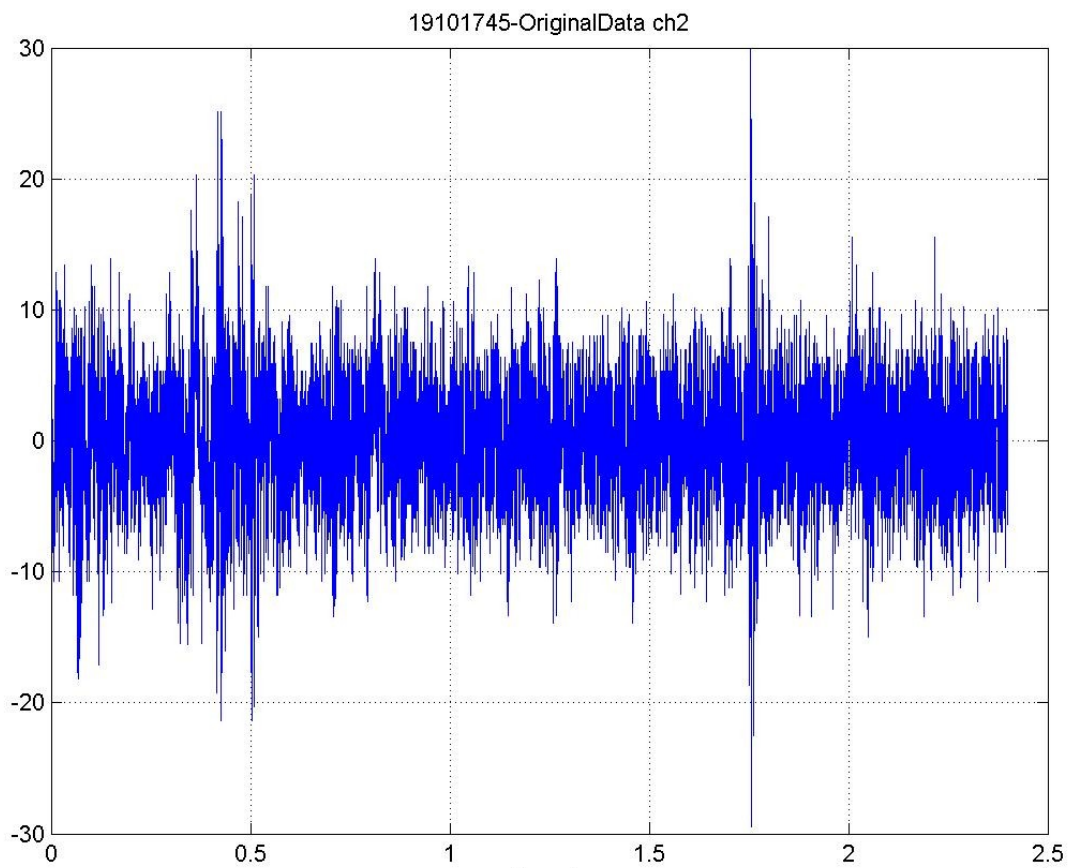
First Look at Geophone Data

Achim Weidemann & Kirk Bertsche

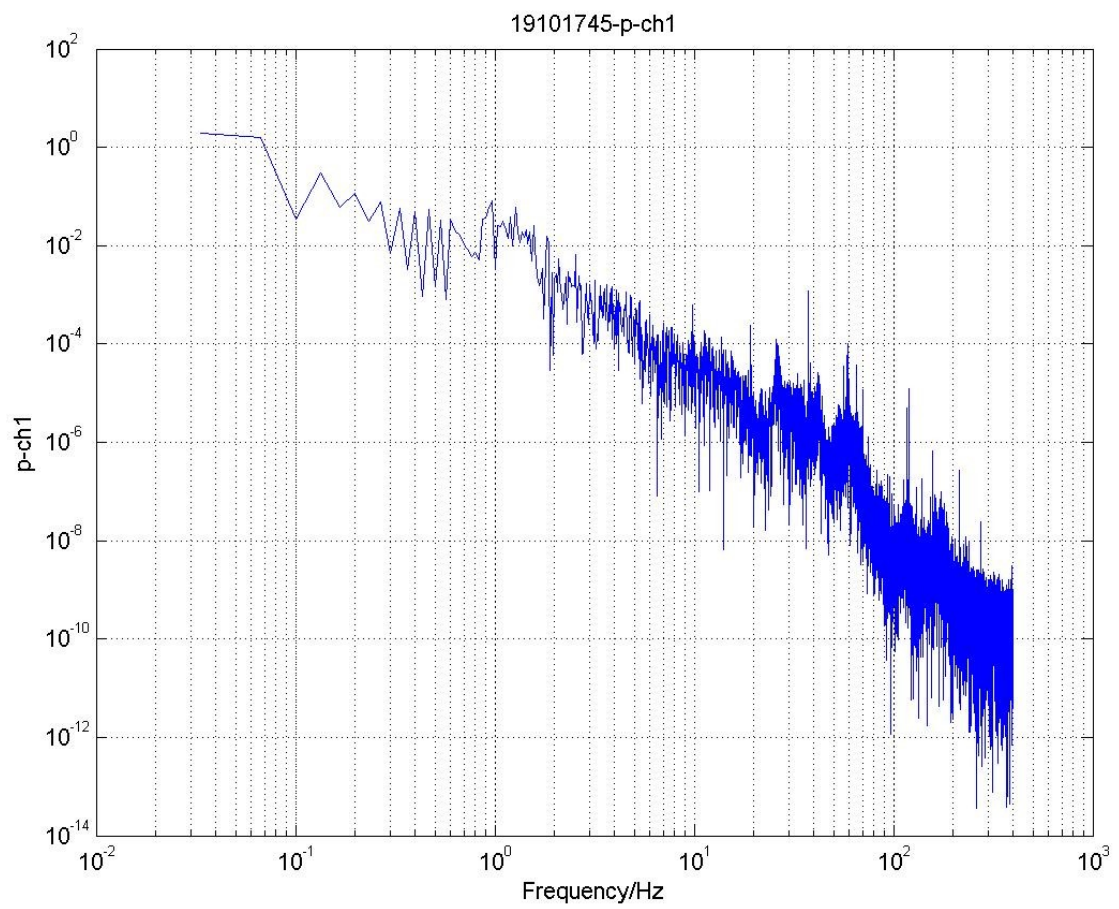
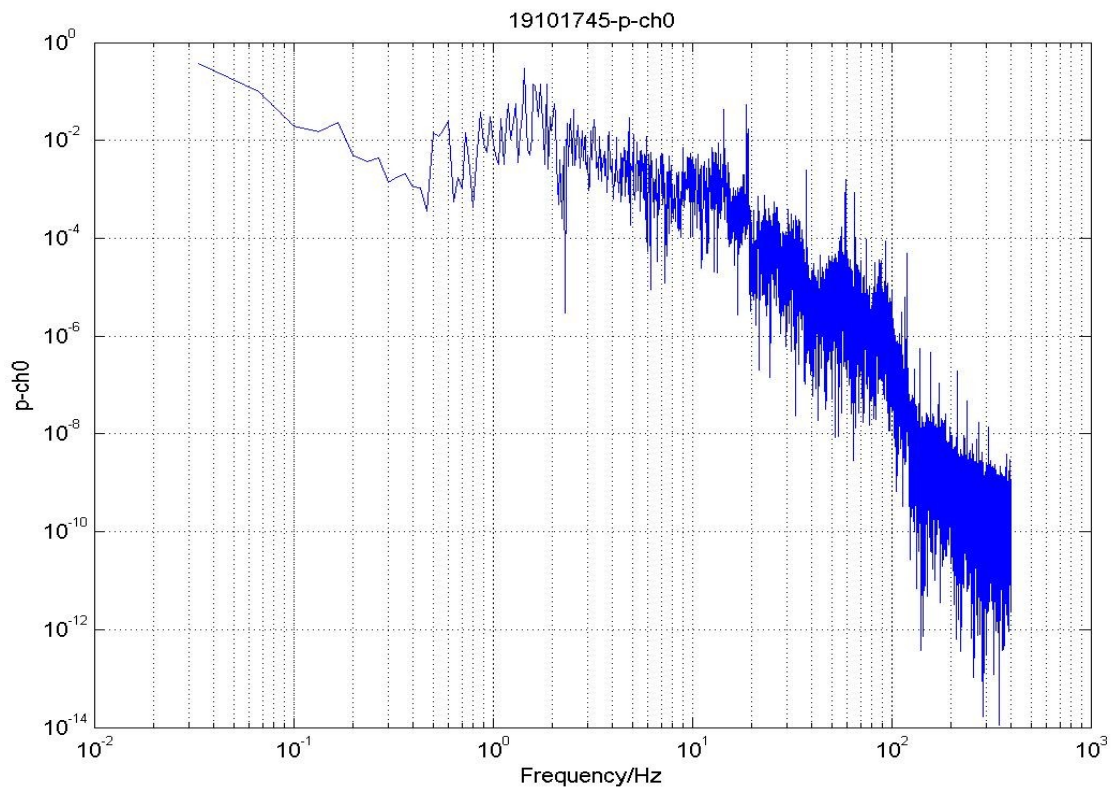
19-Aug-2010

In Achim's office in Bldg 280: ch0=vert mounted horiz, ch1 horiz mounted vertical.

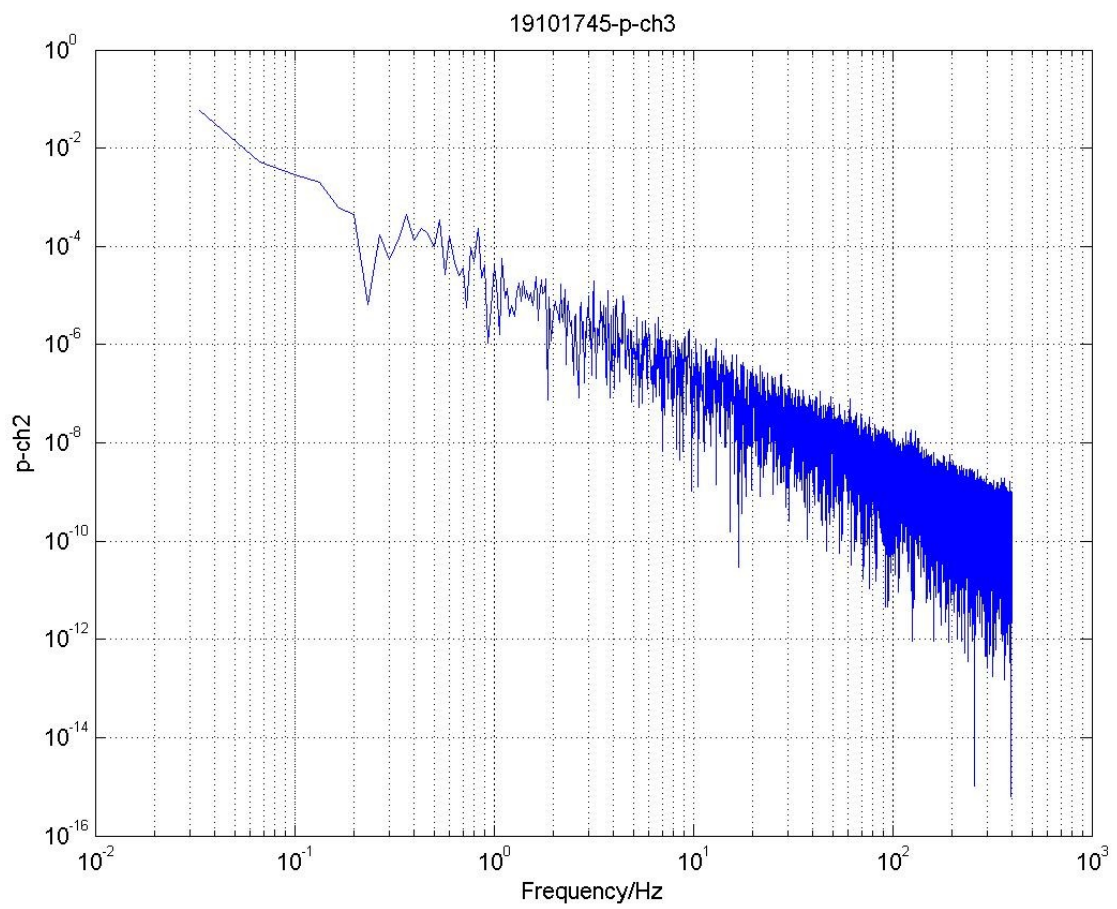
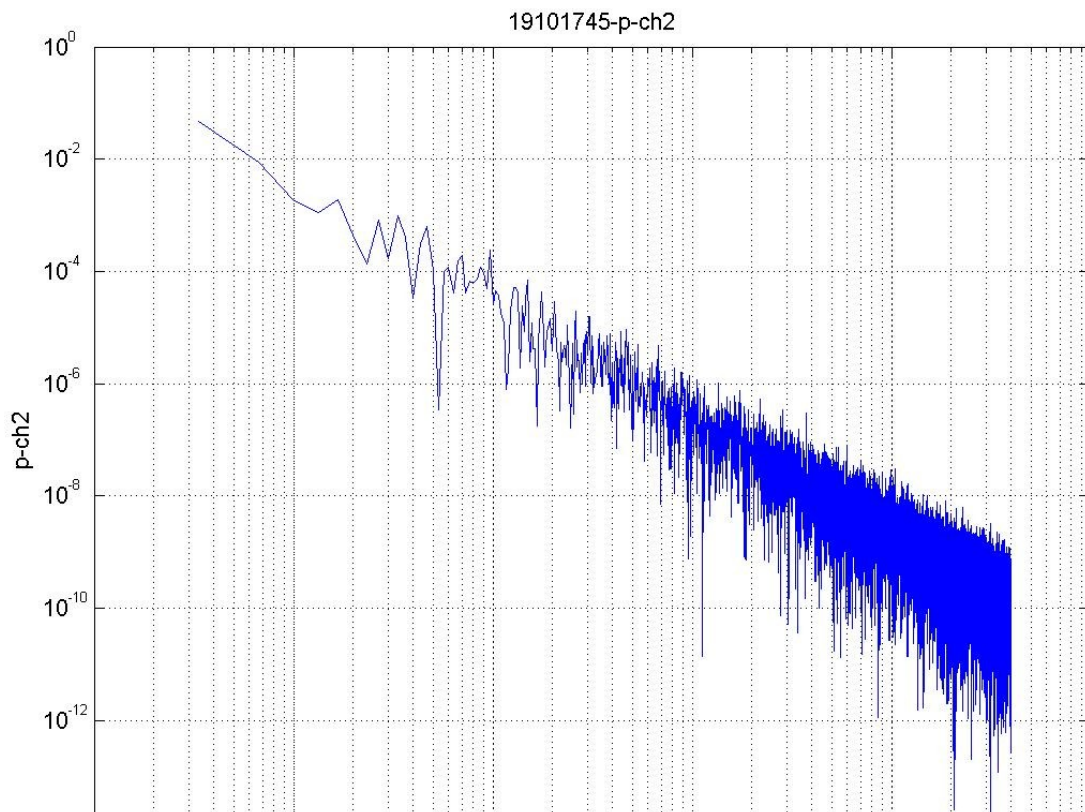




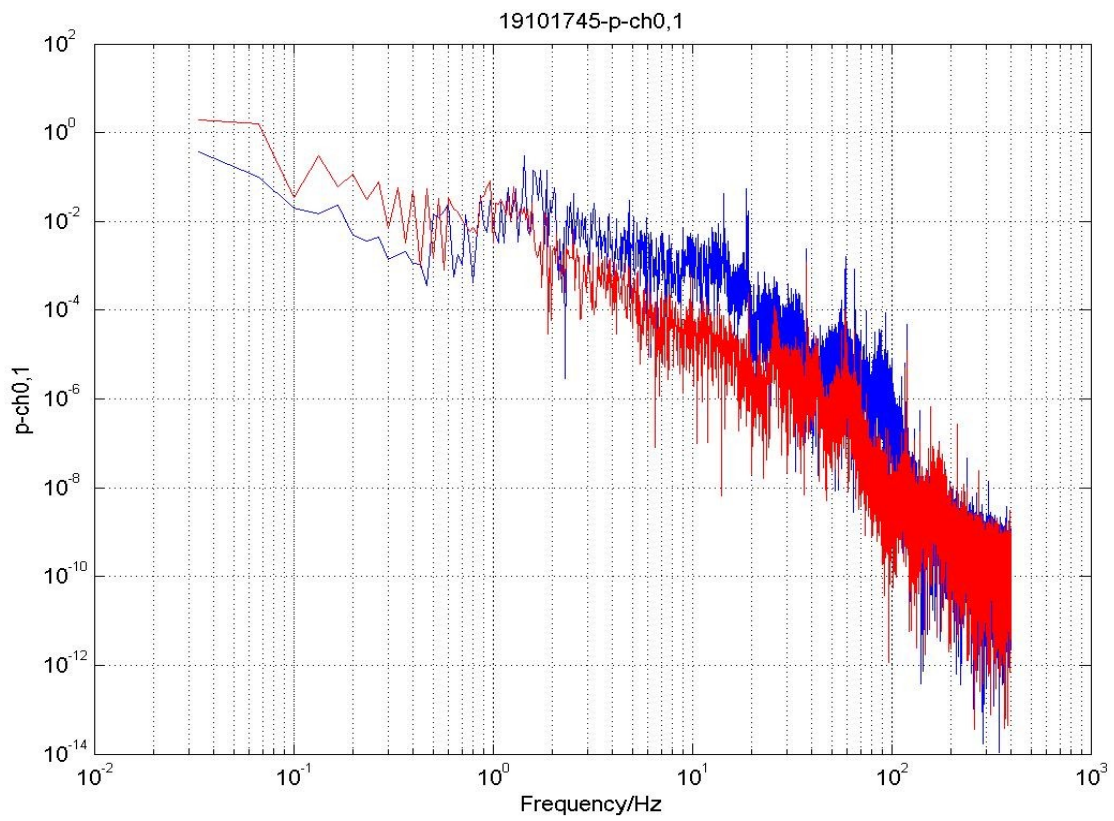
This page: just electronics noise (input shortened)



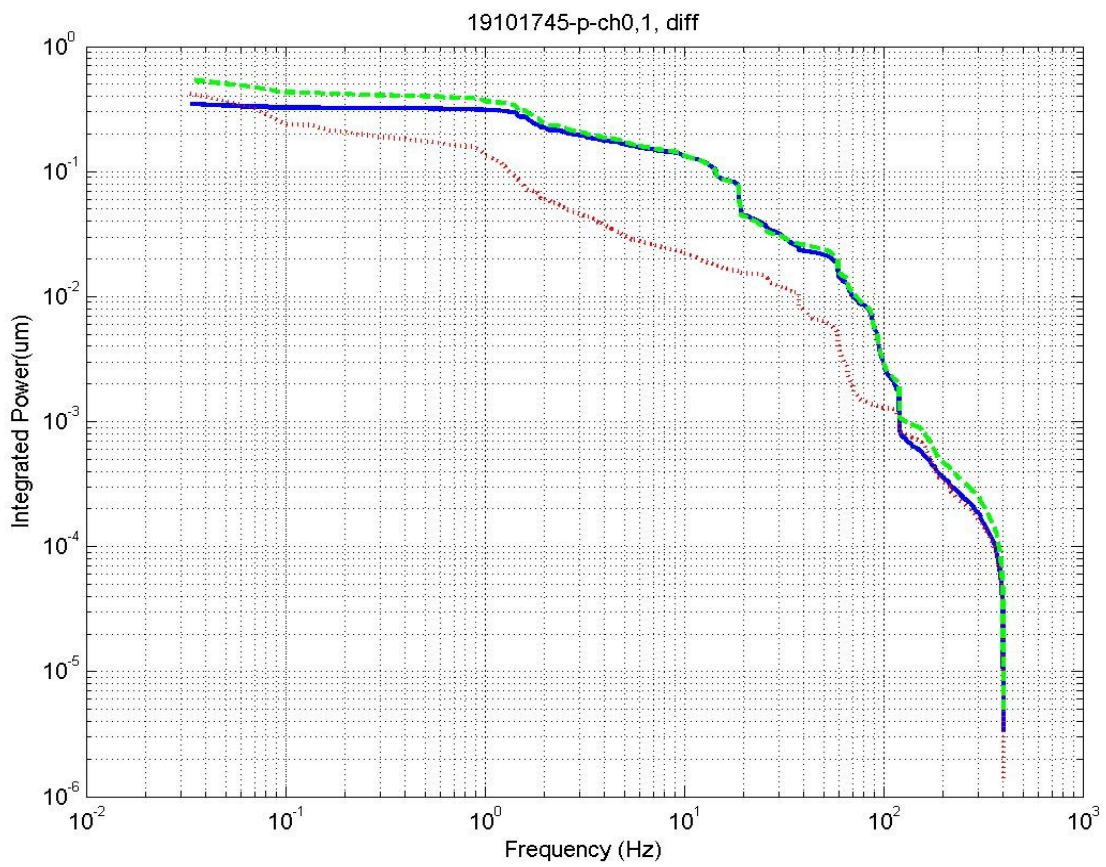
Power spectra



Power spectra of electronic noise (above)

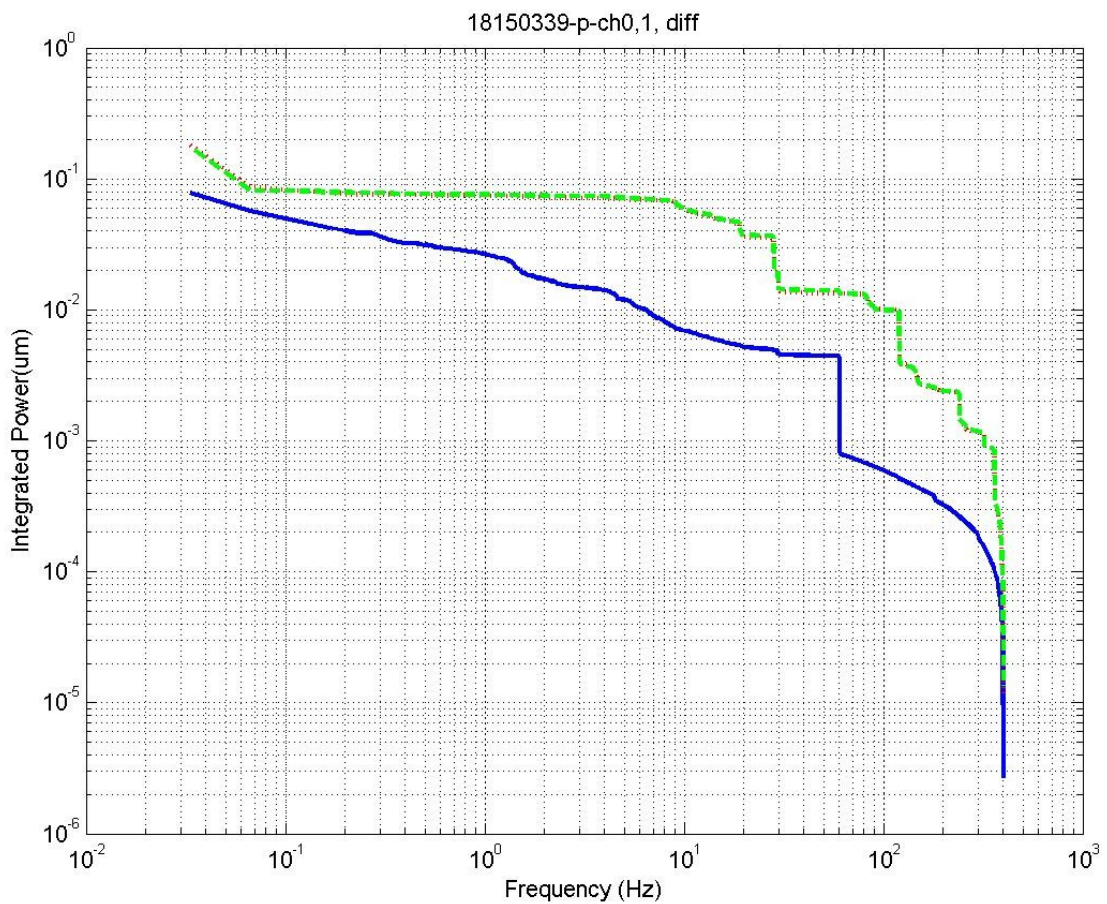
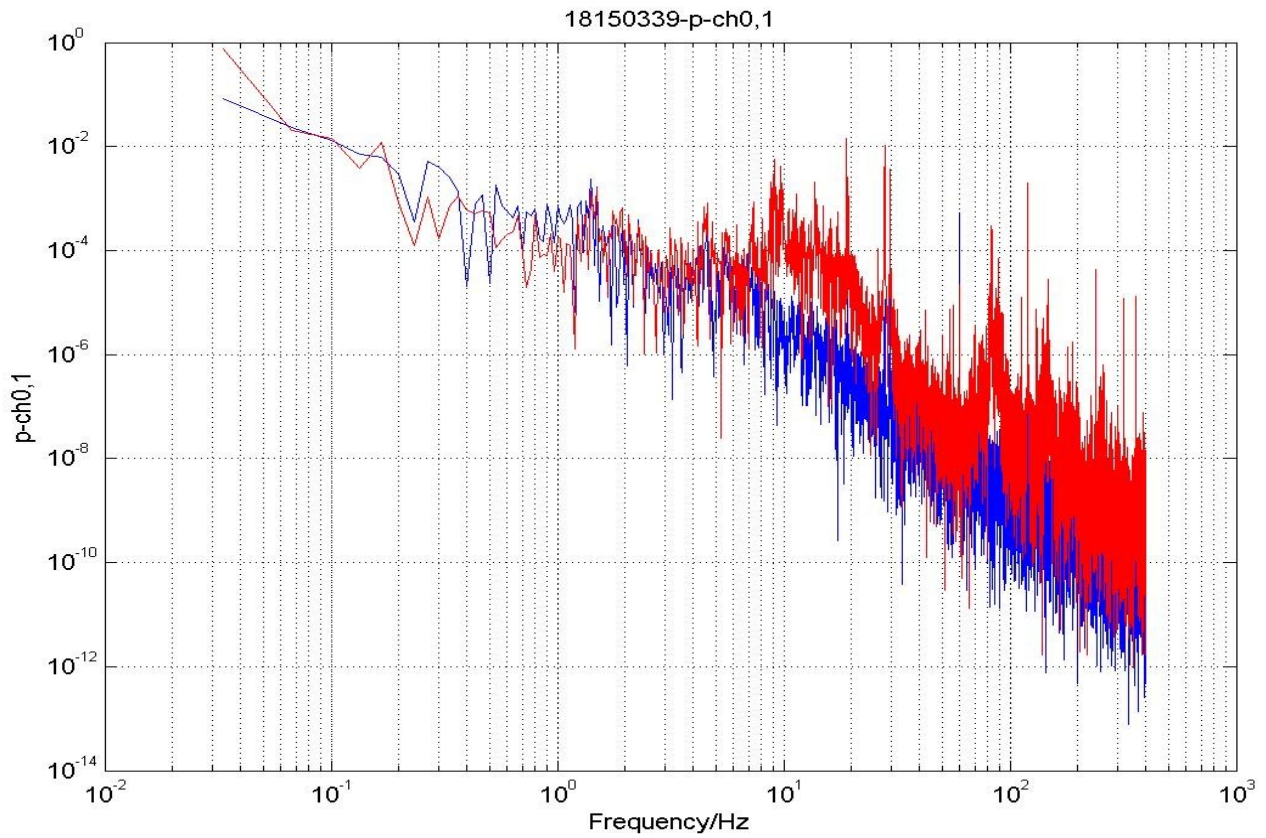


Power spectrum ch0,1 again .



Integrated power spectra for ch0,1, difference.

CH0 Vertical L4C on concrete near SLD NW foot blue
CH1 Vertical L4C On Walkway Top of SLD (JT's Detector) red



Ch0 Vert L4C On NW WIC enclosure Top of SLD (JT's Detector)
CH1 Vertical L4C on concrete near SLD NW foot

