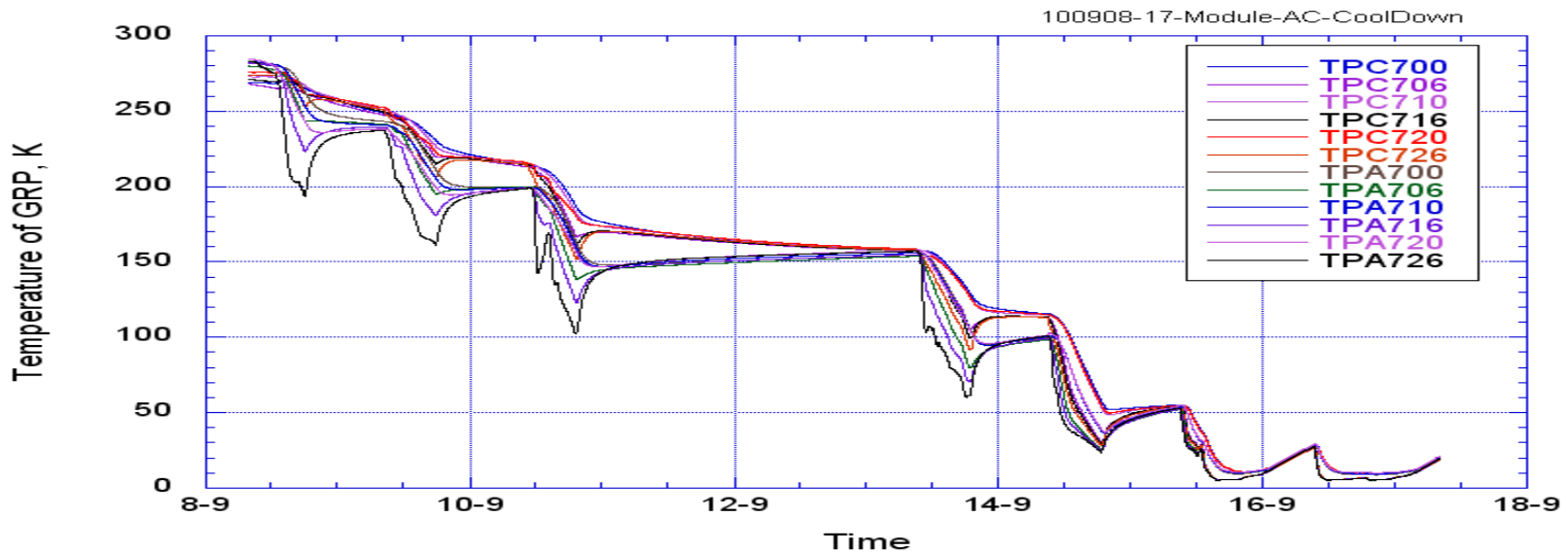
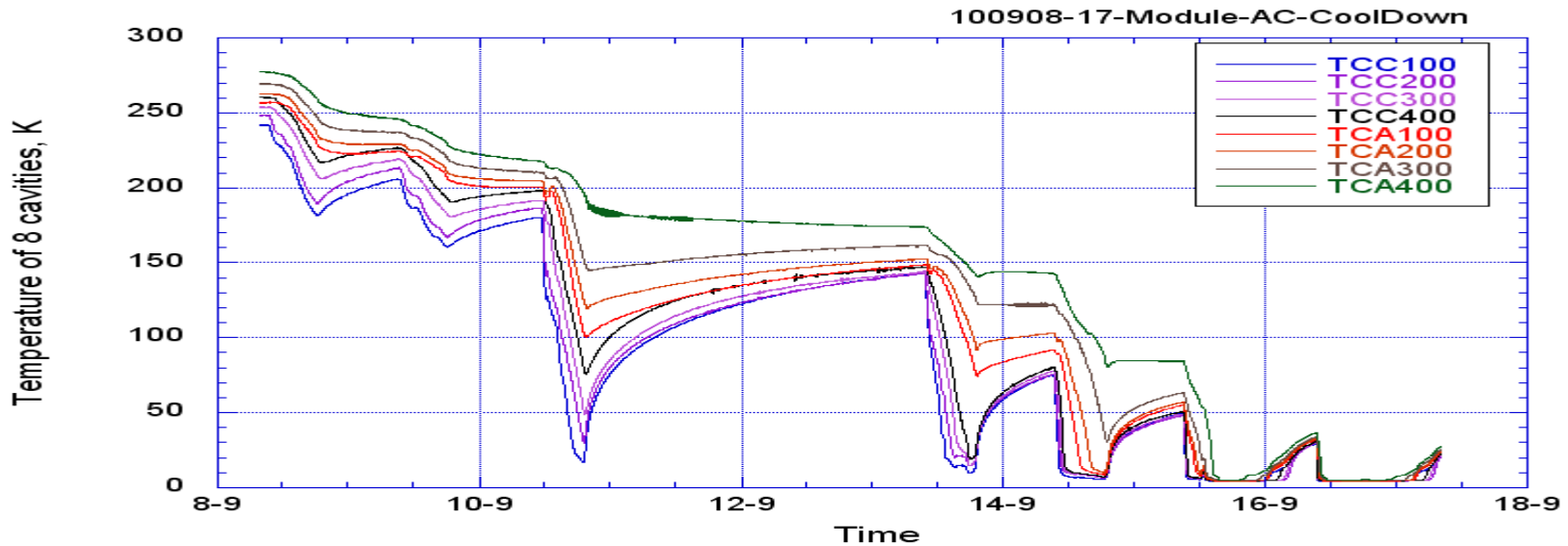


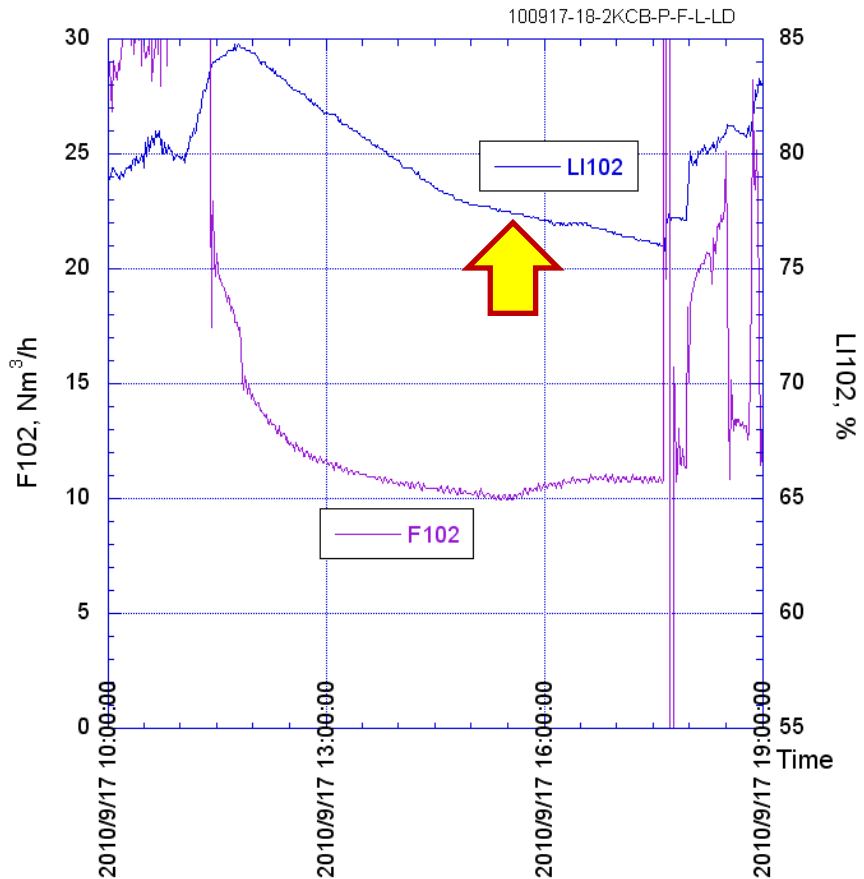
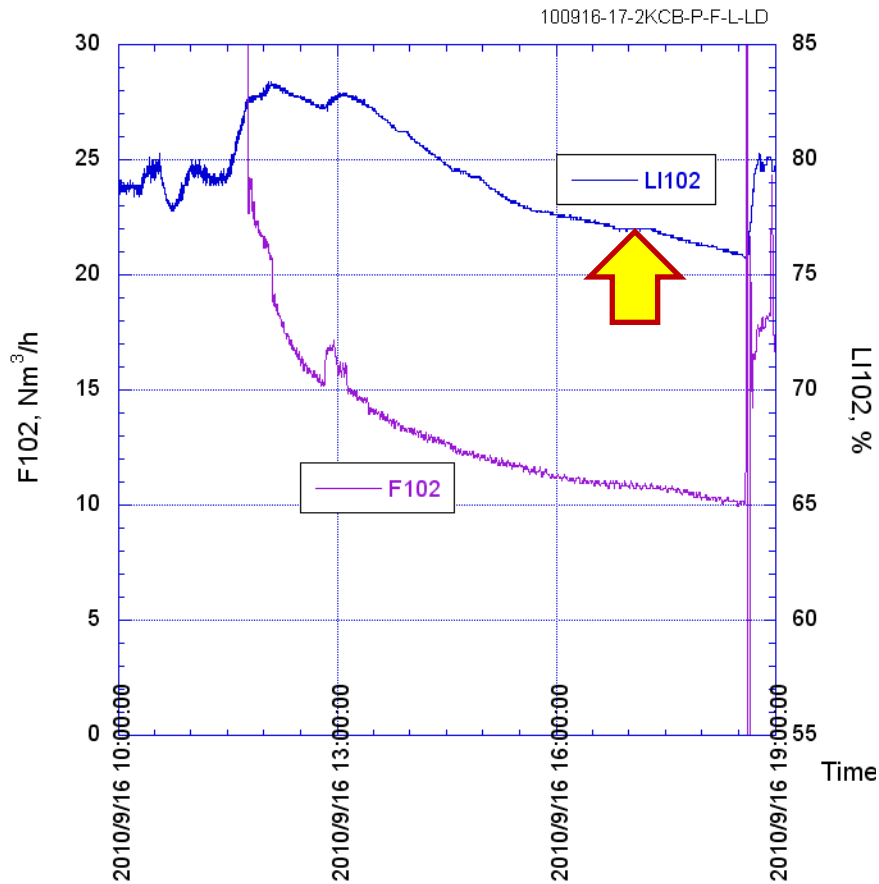
Cool down/Heat load @4K (2nd cold test)

Norihito Ohuchi

Cool down of cavities was started from September 6.



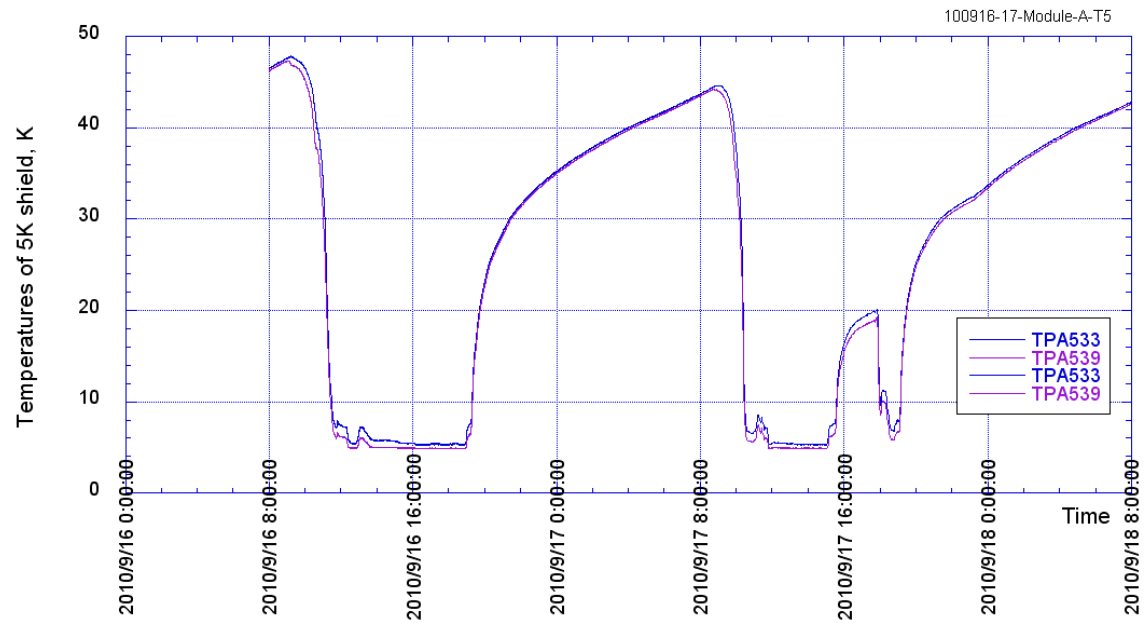
Heat Load Measurement @ 4K



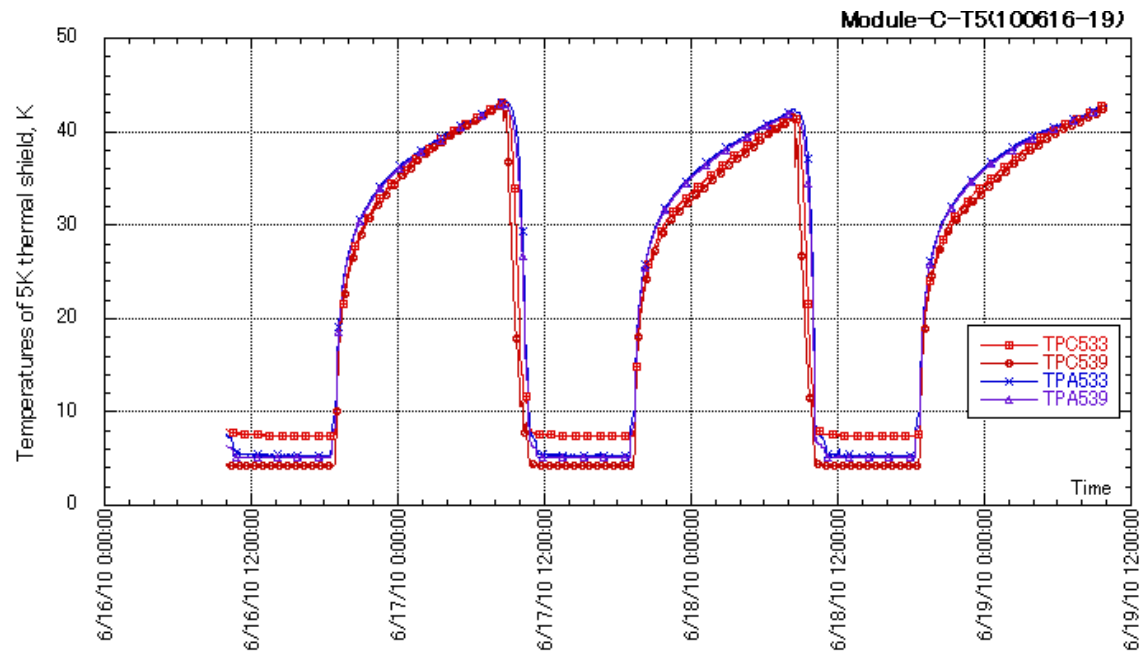
@LI102=77% : F102=10.9 m³/h (Sept. 16) : 10.4 W
 F102=10.7 m³/h (Sept. 17) : 10.3 W

@LI102=77% : F102=10.1 m³/h (June. 16) : 9.7 W
 F102=9.77 m³/h (June. 17) : 9.4 W

5K thermal radiation shield



← 2nd term



80K thermal radiation shield

