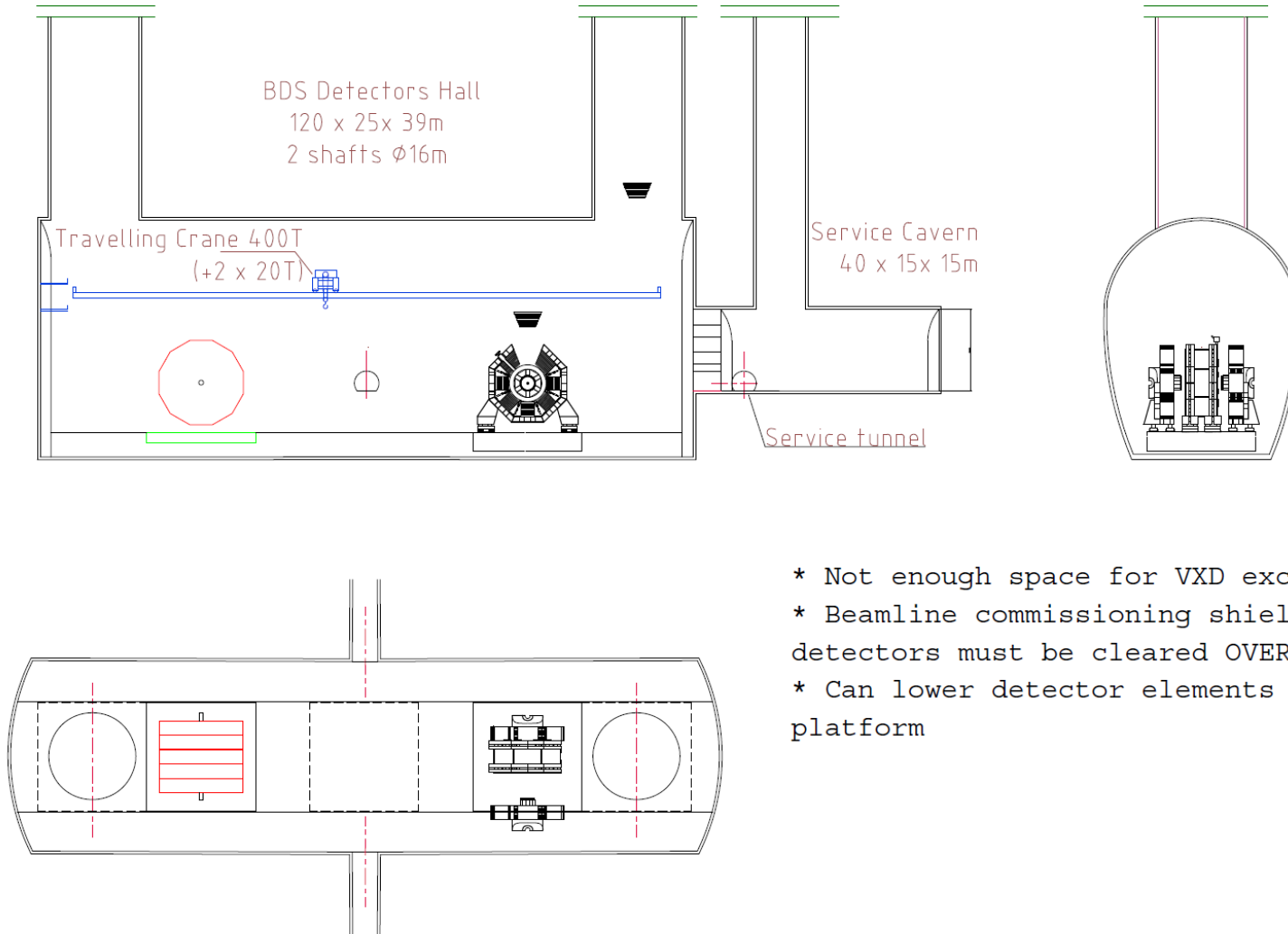
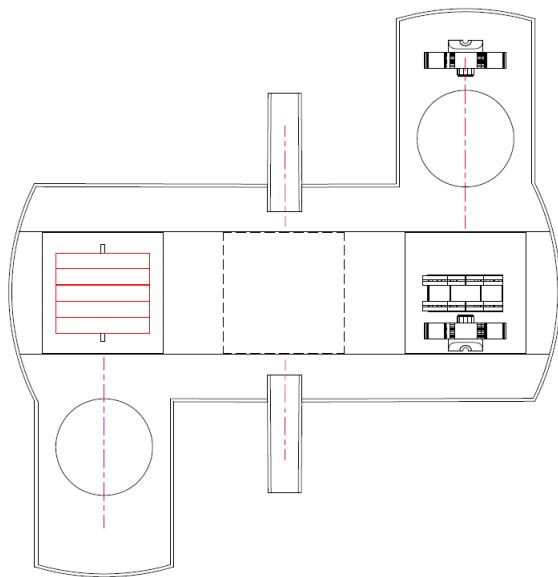
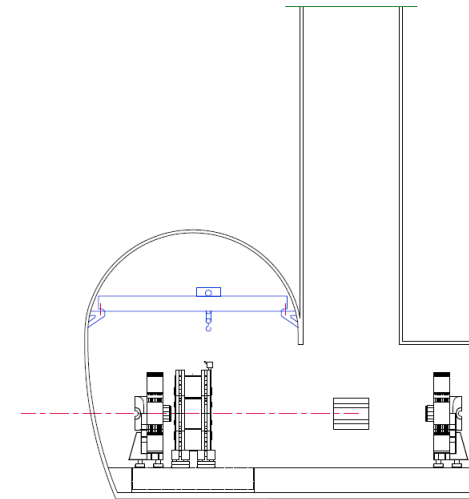
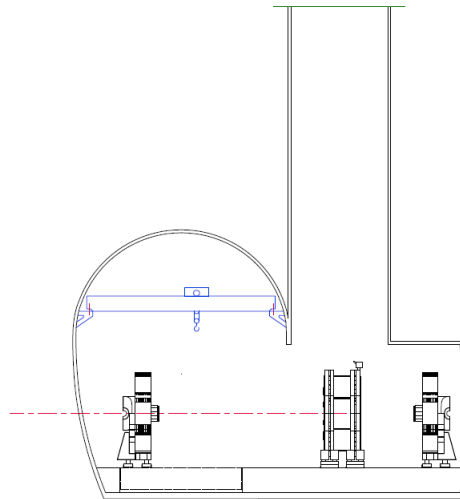
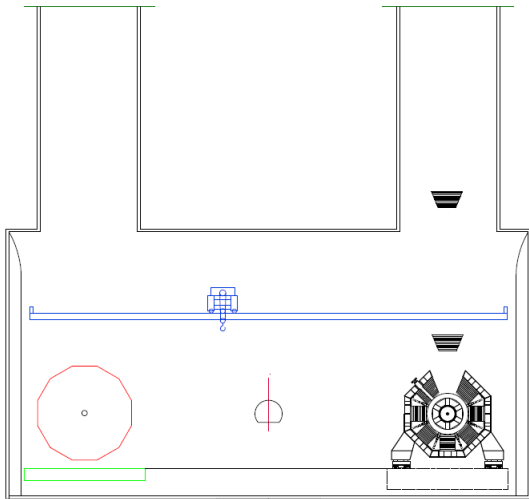


RDR Baseline



- * Not enough space for VXD exchange
- * Beamline commissioning shield blocks/ detectors must be cleared OVER the detectors
- * Can lower detector elements directly onto platform

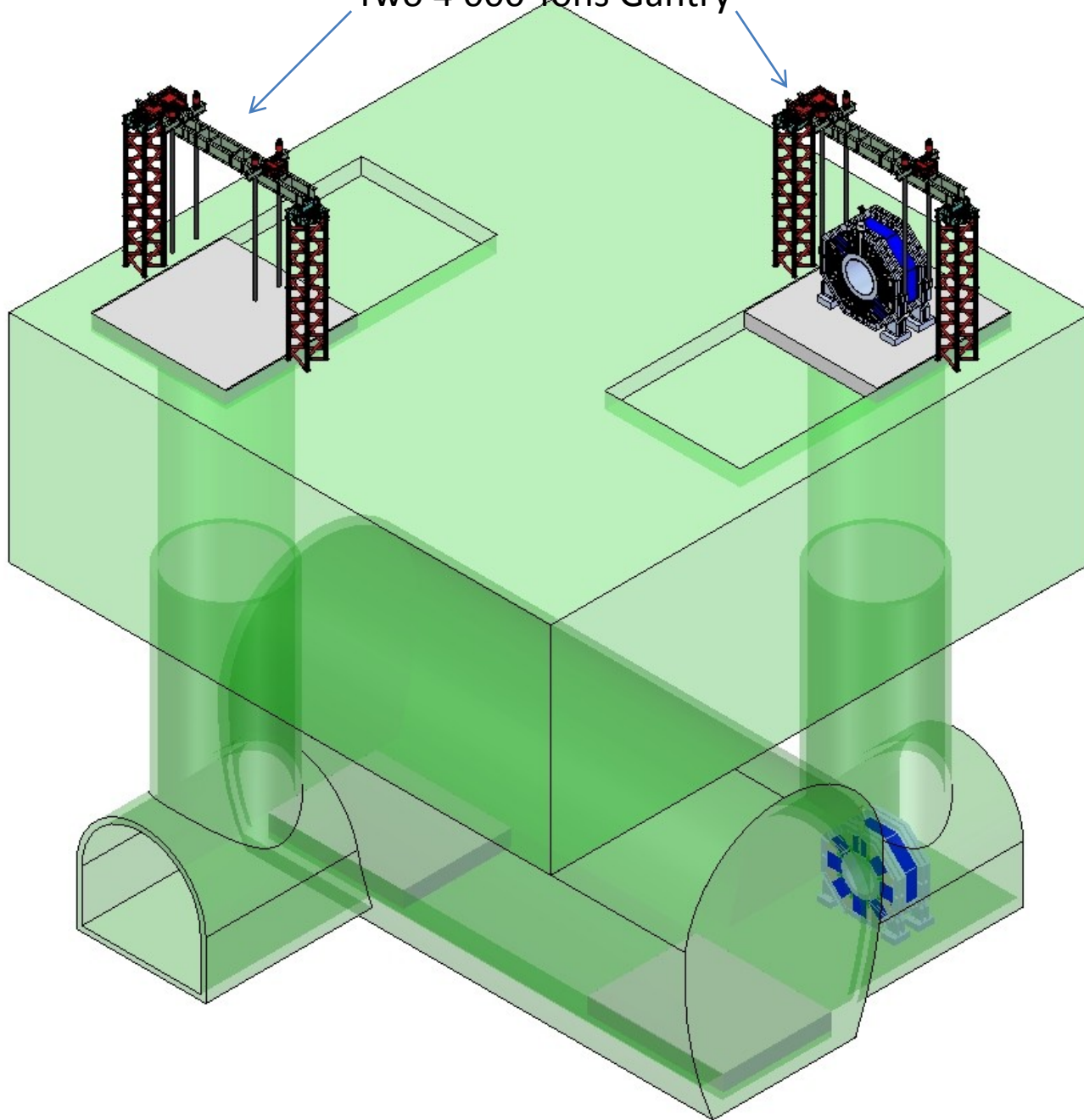
Option 1 : Zee shape, Two Shaft Off Axis



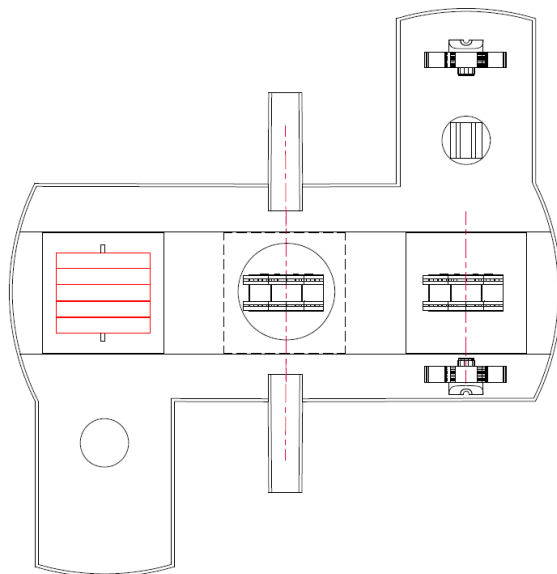
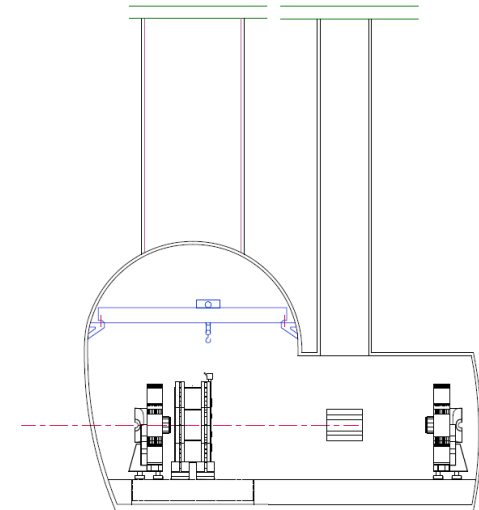
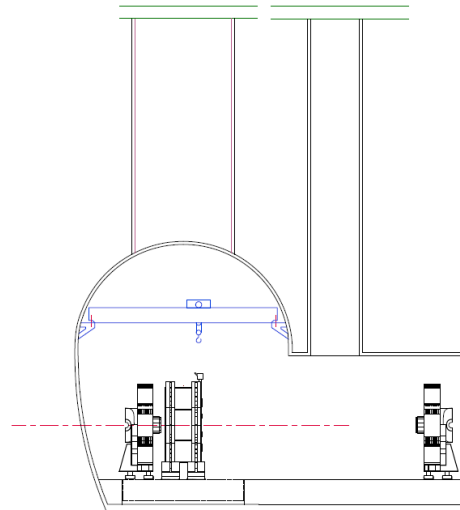
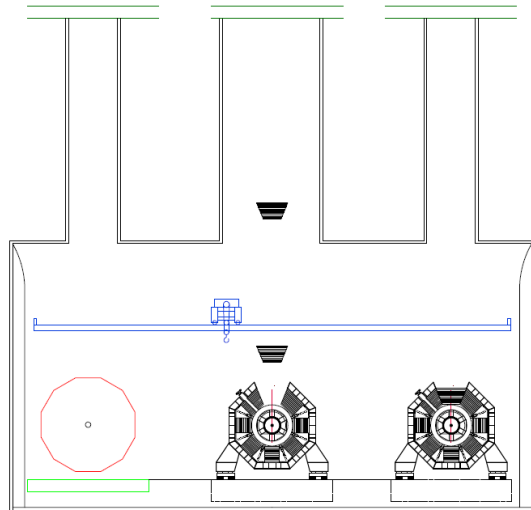
IRENG 2007 Model

- * Barrel must be able to translate along it's axis onto platform
- * Removal of commissioning items an issue
- * Need crane in garage

Two 4'000 Tons Gantry

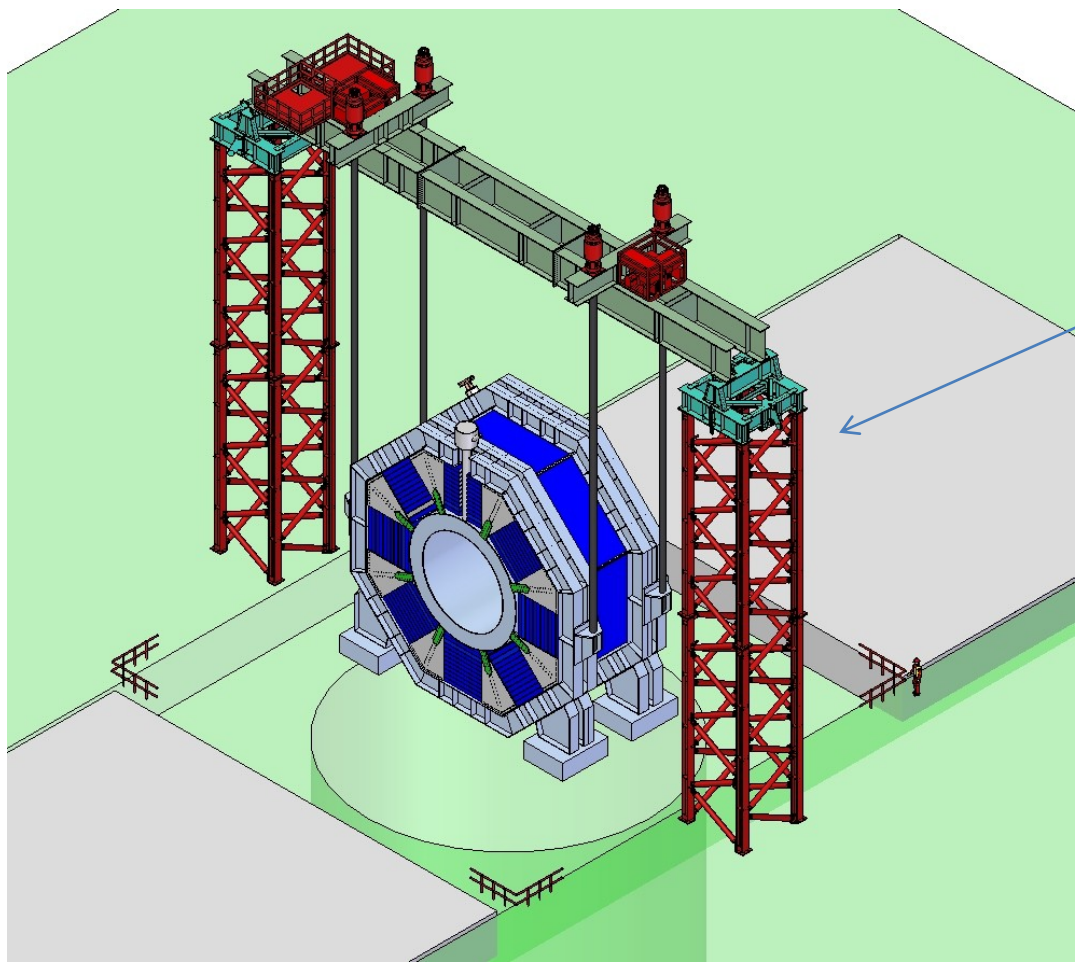


Option 2 : Zee shape, One Shaft On Axis, Two Shaft Off Axis



Single Gantry Serviced Shaft for Detector Subcomponents with smaller service shafts serviced by above ground crane

- * Cost effective
- * Beamline commissioning elements removal easy
- * Detector elements lowered onto platform directly
- * Coordination between 2 detectors less an issue
- * Alcoves need crane access



One 4'000 Tons Gantry

