

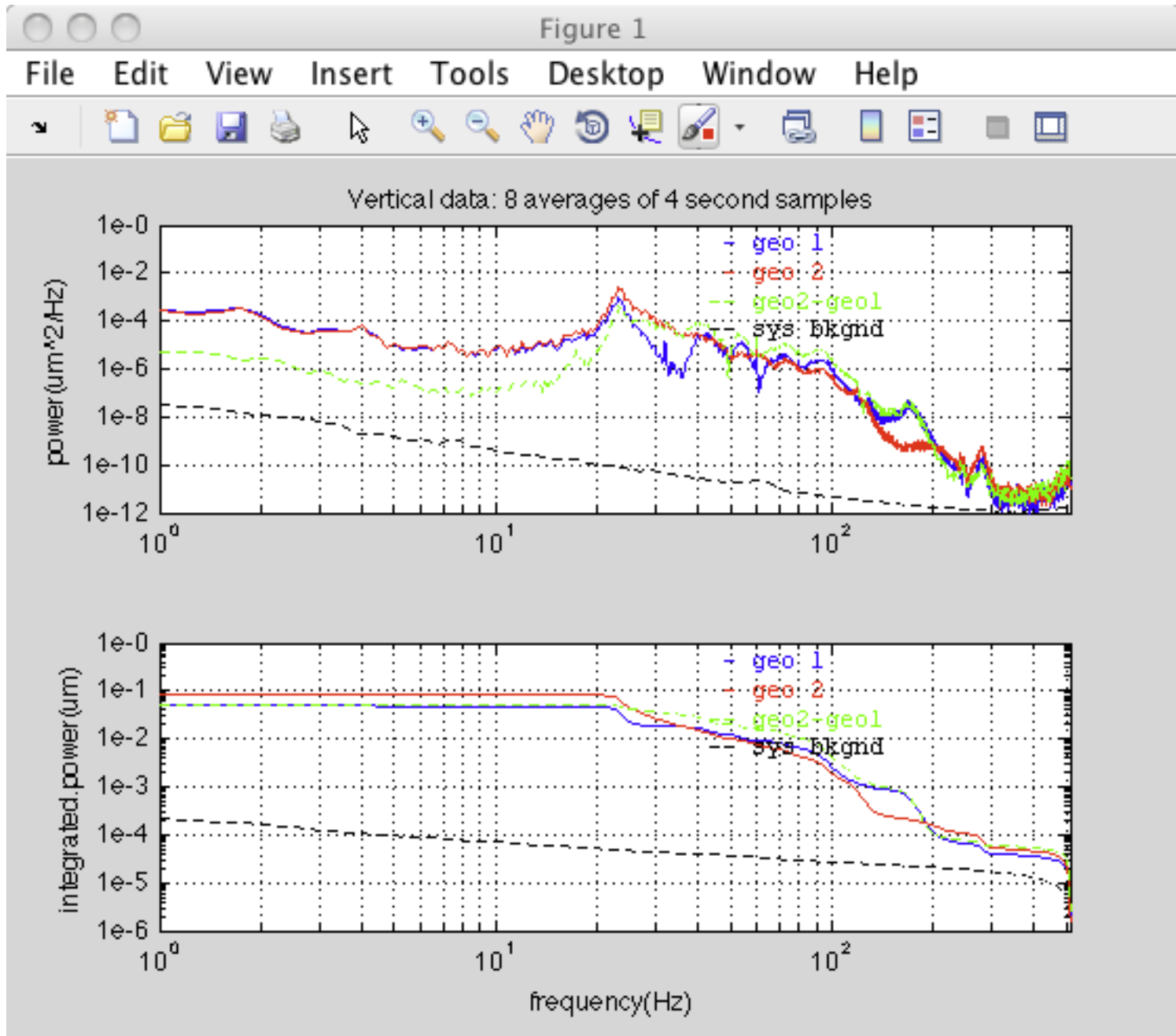
EX-6 Block Data

Kirk, Achim, John

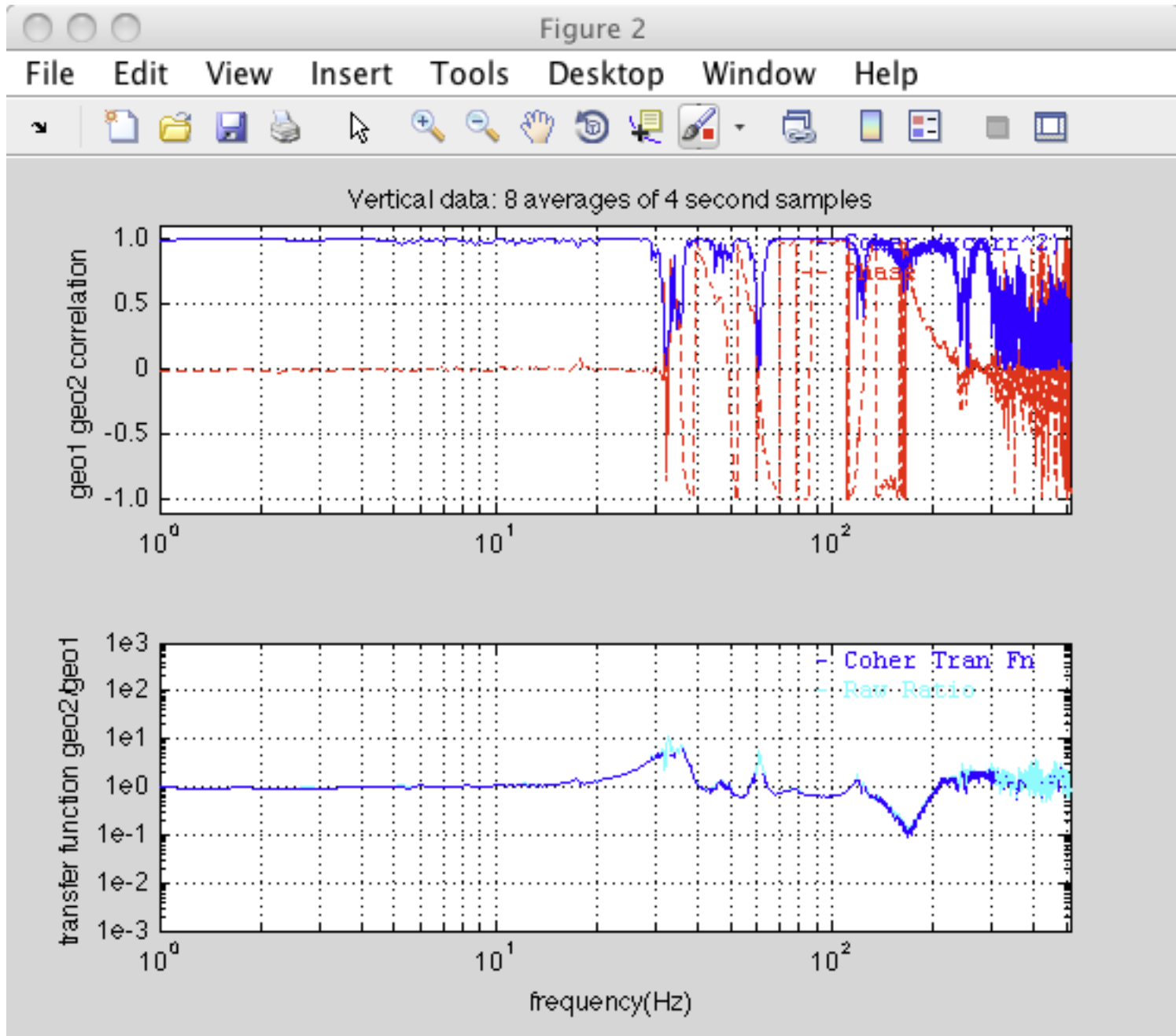
8-11-2011

Measurements

- Friday 8-5
 - Impulses on ground and on block
- Tuesday 8-9
 - Vibrator on ground and on block

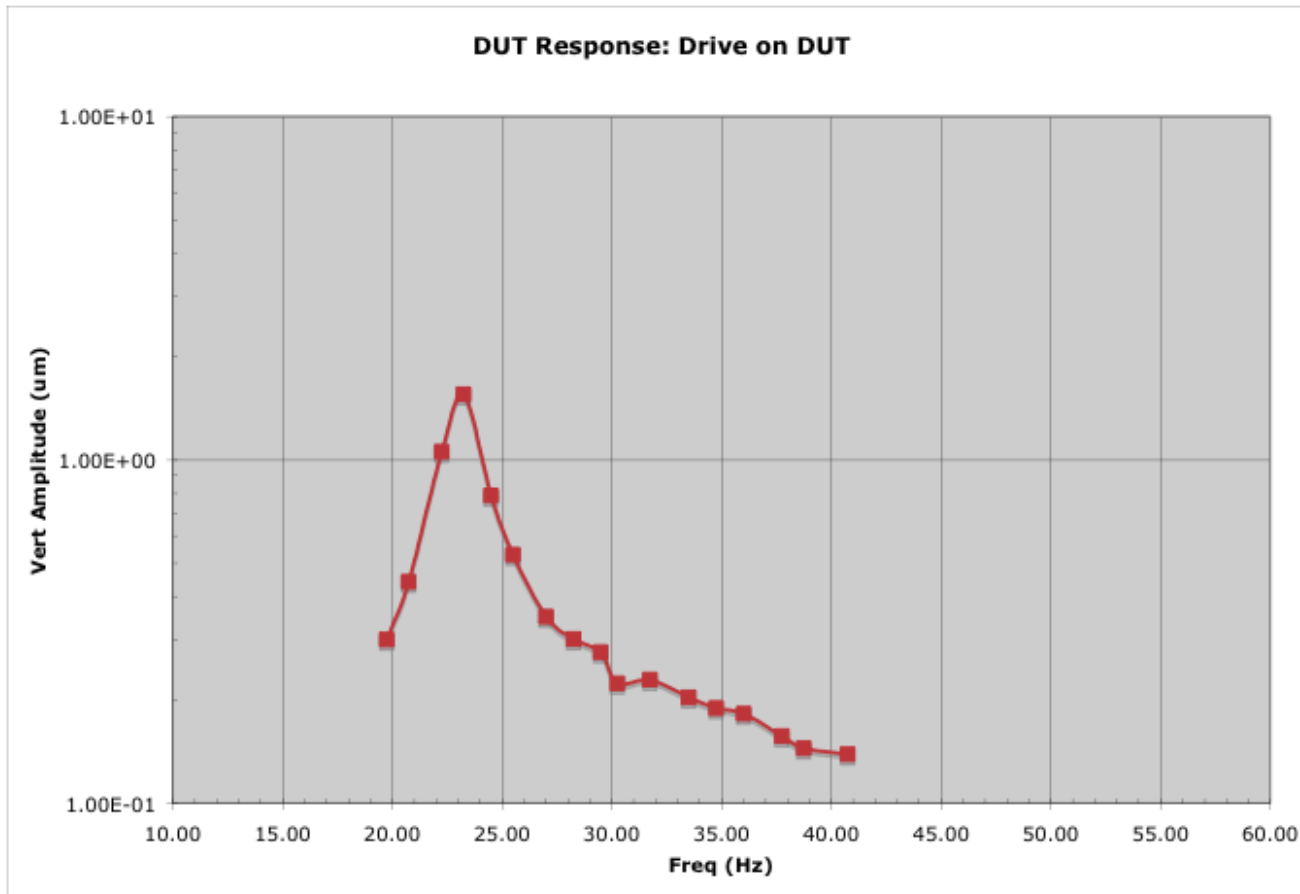


Jumping on ground near block (#05150550)



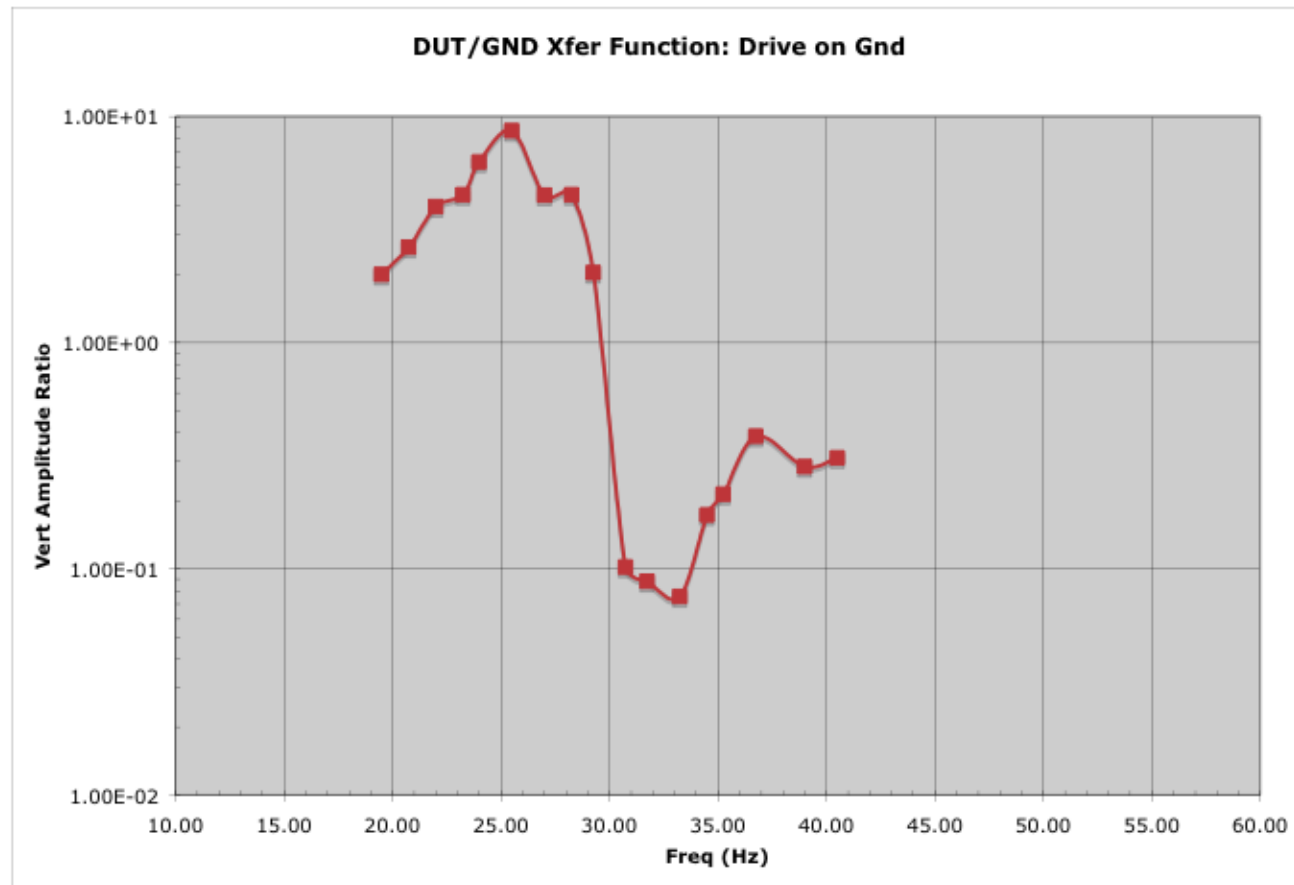
Jumping on ground near block (#05150550)

Vibration response of block



Vibrator mounted to block
Resonance ~23 Hz

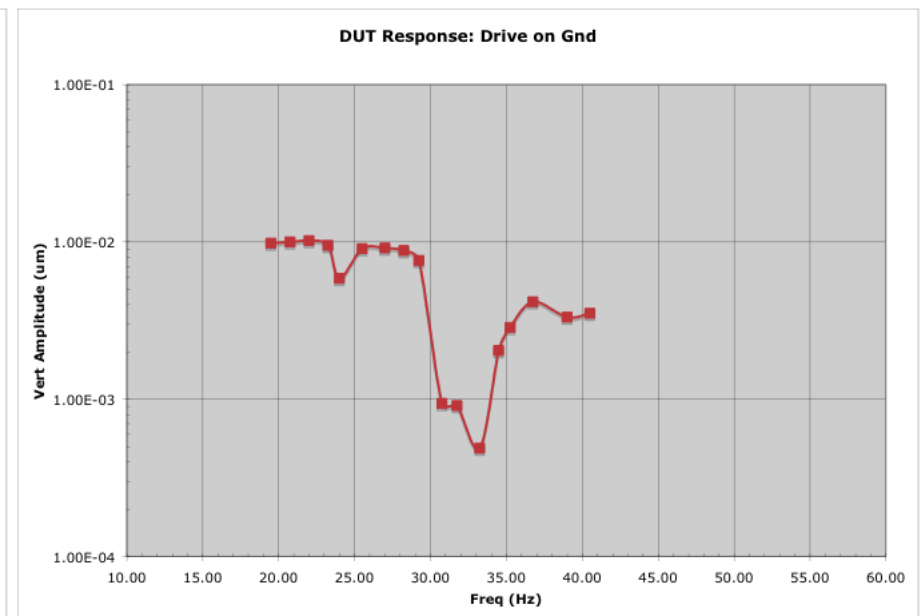
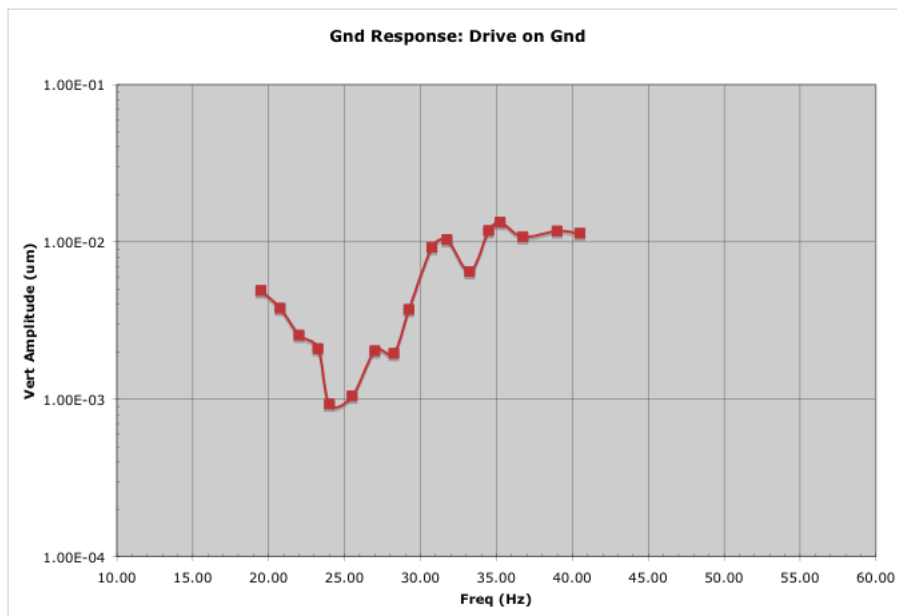
Xfer Function (Block/Floor)



Vibrator mounted to angle iron bolted to floor
Peak ~25 Hz?

Data questionable below 30 Hz due to low excitation

Driven Floor Vibrations



Vibration amplitudes only ~1-10 nm
<10x ambient below 30 Hz
pretty low; may be misleading
Should try driving floor closer to block