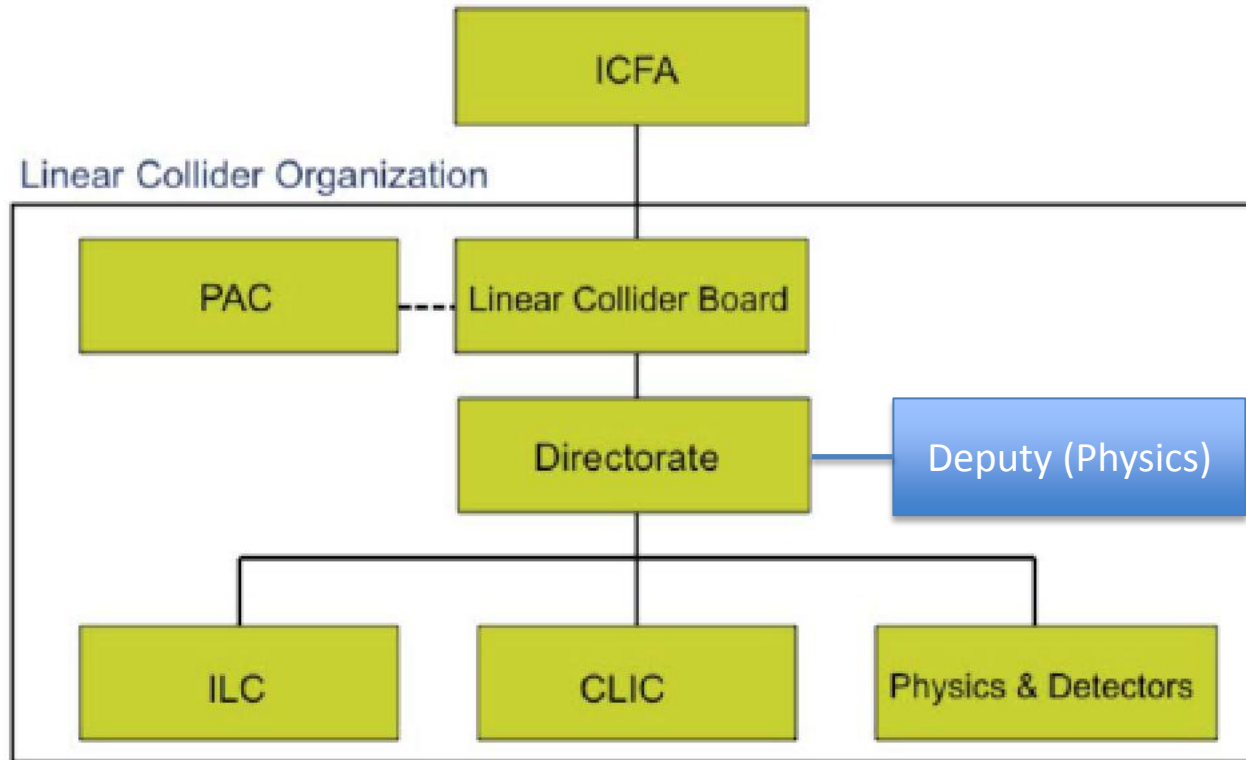


LC organisation



- Recent discussions of the European Members of the LCB (5+5+5+1) and soon also advisory group – discussions lead by ECFA chair Manfred Krammer
- Lyn Evans appointed director for the LC efforts (starting in 2013) – ICFA announced in June

Linear Collider Board

- LCB will have 16 members and will include the Directors of the world's HEP labs and 2 members from each region.
- European members will include CERN DG, head of PP at DESY, Dubna DG and 2 representatives nominated by ICFA.
- Probably will set up a European Advisory Board
- Joint meeting of LCB and ILCSC in Vancouver in February.

CLIC

- CLIC R&D will continue under the present management in order to prepare a long-term option for CERN.
- The Conceptual design report is almost complete and will include staging options.
- A klystron-based start version is also under study.

ILC

- The ILC TDR and Detector DRD are almost finished.
- They will be reviewed by an extended PAC in December.
- A review of the cost estimate for the machine will be made early in 2013.