

Post-2012 Linear Collider Organization

- For over a year now, the community has been in discussion on how the LC effort might be organized as we move through the next few years.
- For example, the WWS-OC wrote to the ILCSC in December, 2010, with comments on the CPDG (Comprehensive Project Design Guidance) regarding the post-2012 organization.

ILCSC Meeting

- The ILCSC met in Oxford, February 2.
- An extended (many month) discussion led up to the Oxford meeting.
- Agreement reached for general proposal for LCO.



Future Perspectives



LCWS11 Granada

Jonathan Bagger

Chair, ILCSC

Johns Hopkins University

9/30/11



Post 2012



- The mandates of the ILCSC, the GDE and the RD all expire at the end of 2012
 - ◆ This is an opportunity for us to take the next step towards a linear collider
- Of course, we'd like to start a construction project at that time ...
 - ◆ But given political reality, it's likely we won't have that choice ...

Post 2012



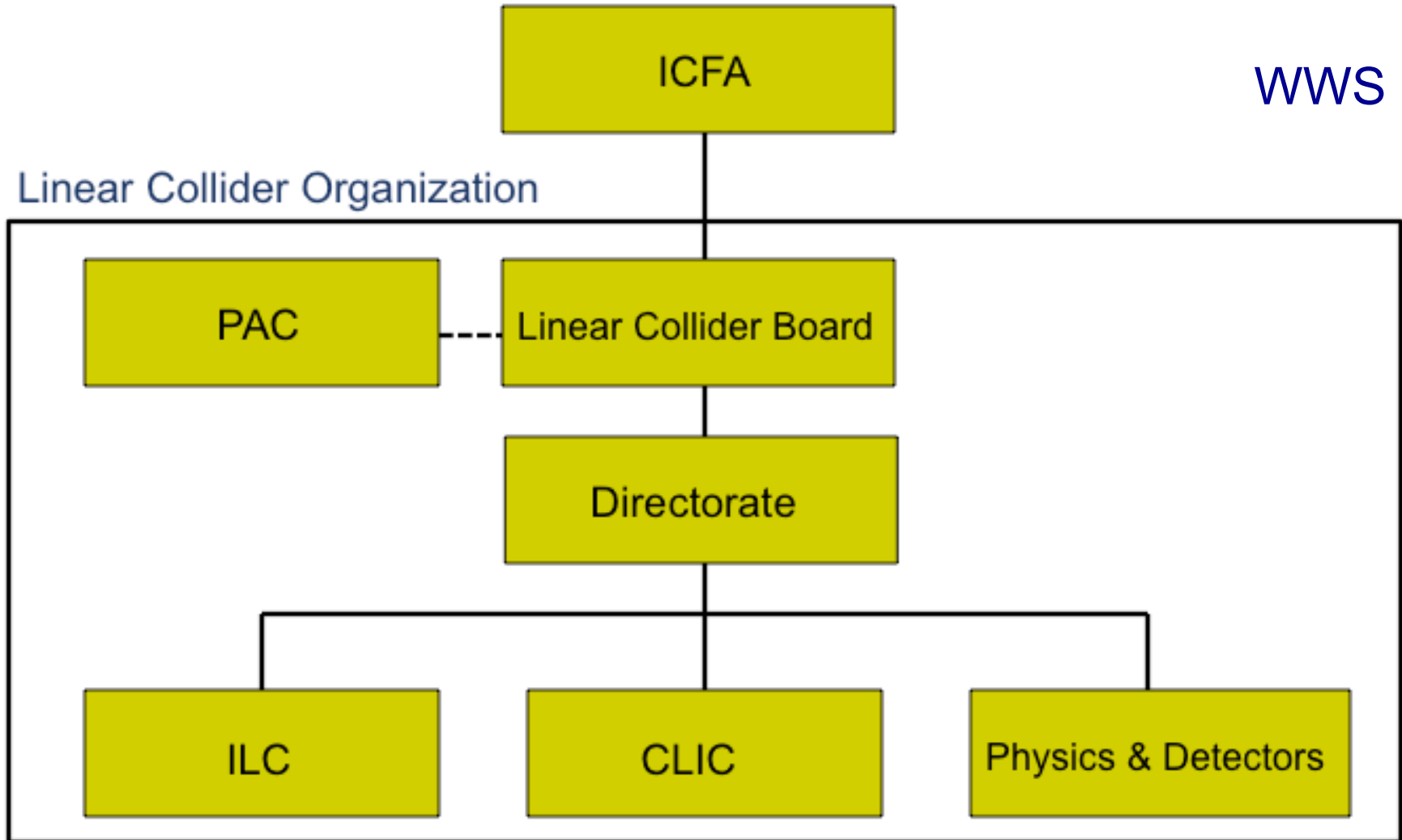
- The ILCSC is preparing to propose to ICFA a transitional Linear Collider Organization, charged with preparing a single world-wide linear collider proposal, with technology based on the physics revealed by the LHC
 - ◆ This organization would exist for 3 – 6 years, as required
 - ◆ It would bring ILC, CLIC and the RD into a single entity, with a single Director, who would speak with one voice for the global linear collider community

Possible Organization



WWS

Linear Collider Organization



Path Forward



- For ILC, before 2012
 - ◆ Finish TDR / DBD for accelerator and detectors
 - Balance cost, risk, operations and physics
 - Contain costs while retaining essential capability
 - Prepare Project Implementation Planning document
- For CLIC, before 2012
 - ◆ Finish CDR
 - Aggressively pursue essential R&D

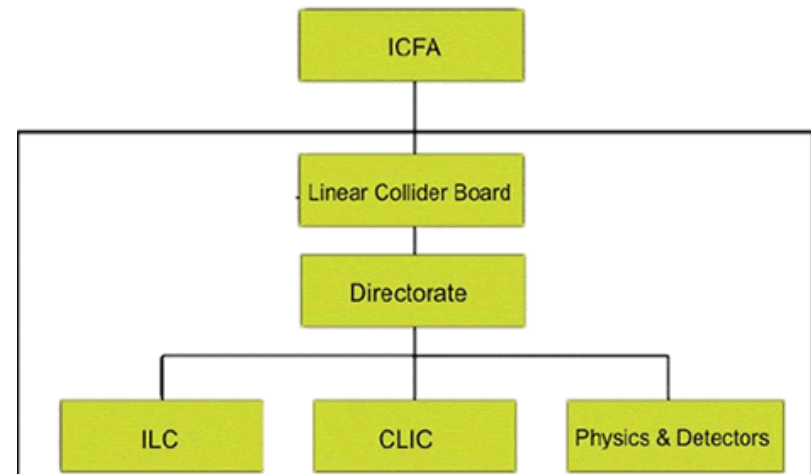
Path Forward



- For ILC, post 2012
 - ◆ Continue work on accelerator and detectors
 - Especially systems tests, higher gradient cavities, value engineering, change control and detector development
- For CLIC, post 2012
 - ◆ Push towards a PIP in 2016
- For ILC and CLIC
 - ◆ Prepare for news from the LHC
 - Be ready to move quickly – when the time is right

Post-2012 Linear Collider Org.

- Proposal agreed to in January:
 - ILCSC replaced by the Linear Collider Board, with 5 members from each region and a Chair.
 - Directorate headed by the Linear Collider Director, with Associate Directors for the SCRF linear collider (former ILC GDE), the room-temperature two-beam linear collider (former CLIC), and the physics and detectors for these machines.
 - Mandates being produced for the Linear Collider Board, the Linear Collider Director, and the three Associate Directors.
 - All of these post-2012 recommendations will require ICFA approval.
 - WWS OC role in new structure was discussed and agreed to continue as an independent body which will give reports to the new LCB.

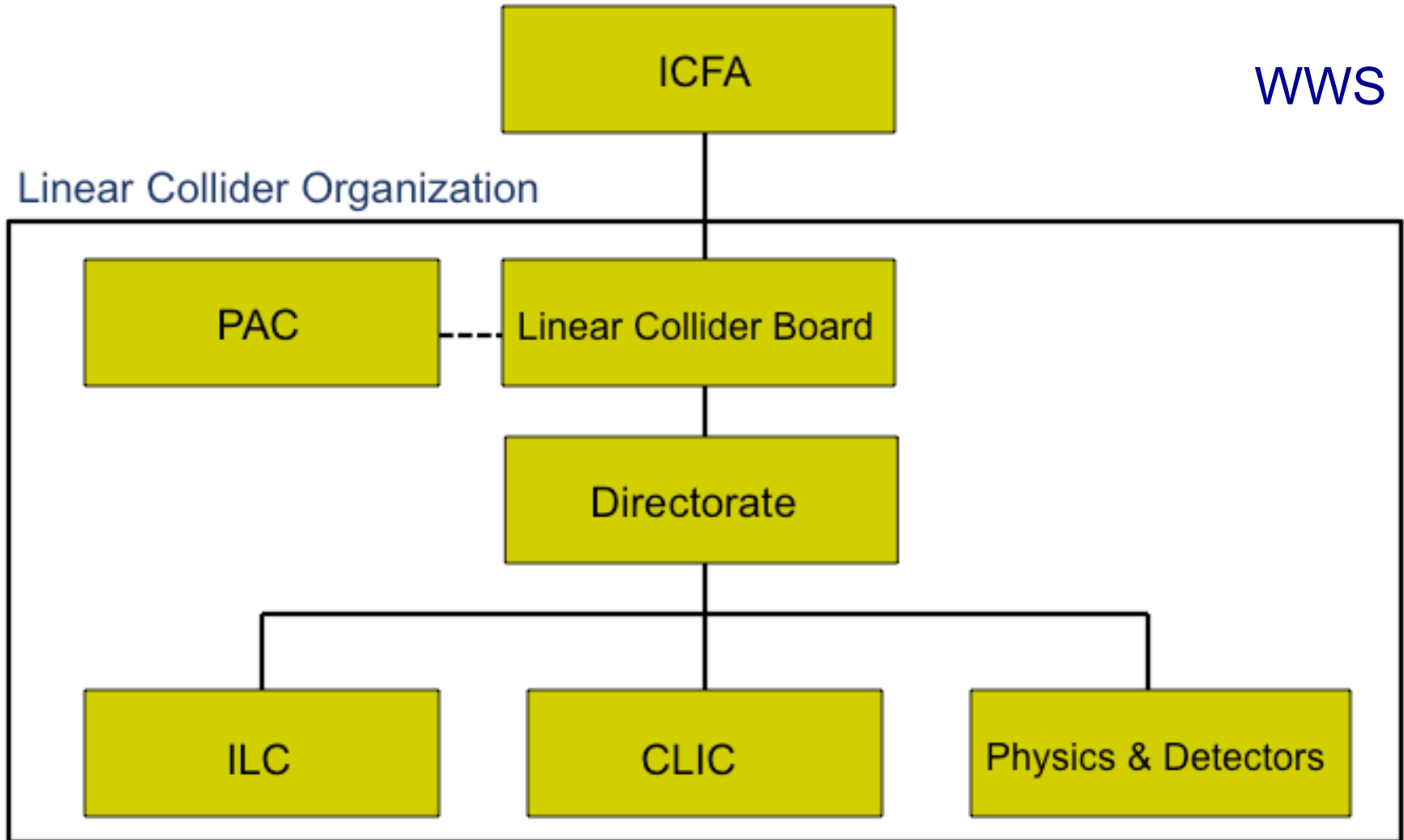


Possible Organization



WWS

Linear Collider Organization



THE PAST
Independent
ILC and CLIC
organizations

ILC Research
Directorate
(2008-12)

THE FUTURE
???

