

## The Linear Collider Organization post 2012

The mandates for the GDE, ILC Research Directorate and ILCSC all end on delivery of the TDR/DBDs in early 2013.

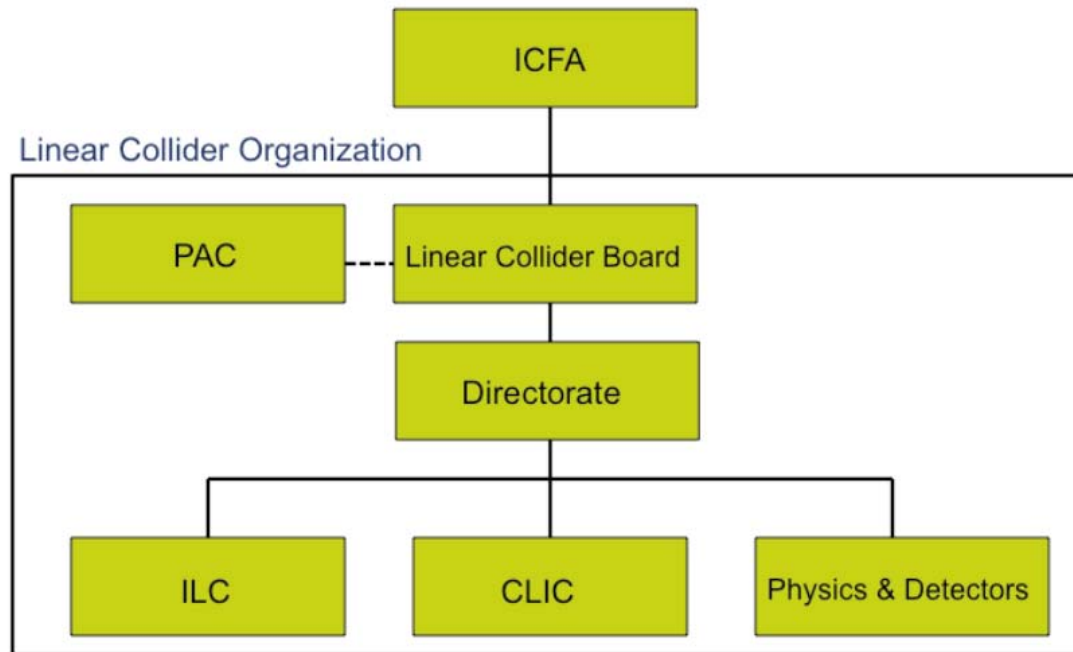
In addition we expect the CLIC CDR soon; the companion CLIC detector volume is available.

It is generally agreed that

- ❖ The case for a linear collider rests upon the physics results of the LHC (and the 125 GeV Higgs candidate is good news)
- ❖ We wish to avoid a shootout between ILC and CLIC technologies, but rather to be guided by physics needs, technical readiness and cost.
- ❖ It is important to retain the global cooperation for a LC that has been built over the past 8 years.
- ❖ The time is not yet ripe for a formal decision to start a LC project. This will require further understanding from the LHC and some nation to initiate a proposal to host. Hence an interim organization is needed to further develop a LC as a future project.

In the past year, ILCSC undertook to propose an organizational structure (to ICFA) that can carry LC activities in an interim period of several years.

The model discussed within LCSGA was basically adopted by ILCSC and approved by ICFA.



An ICFA search for the LC Director culminated in the appointment of Lyn Evans.

## Organization of LCB:



LCB will consist of 5 members from each region and a chair. The regional members will be proposed by the region, according to its own processes, for 3 year terms. The regional members should represent the major stakeholders in the program with appropriate balance, and should include major lab directors and at least one community representative.

LCB chair should not be a Lab director.

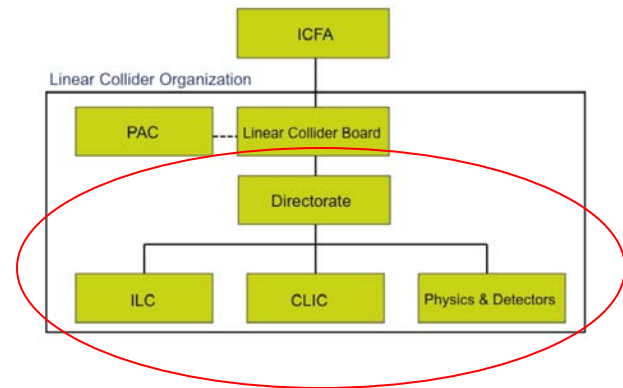
Appointments are for 3 year terms.

An ICFA committee (the same as for the Director search) is supervising the membership selection process.

The Vancouver meeting in Feb. 2013 will be a joint meeting of ILCSC (its last) and LCB (its first).

## LC Directorate

Lyn Evans will choose the ILC and CLIC associate directors with LCB consultation.



Several models for the Physics and Detectors Associate Director were suggested (and even the title). The plan is retain the title and joint role for oversight of ILC and CLIC detectors. Evans will consult with the experimental community to help define the position and to solicit candidates. Though ILC and CLIC detectors have considerable common ground, we expect that these collaborations will retain independent identities.

Evans expressed his desire to appoint a (part time) Deputy who would help articulate the physics case for the LC to governments and public. This position could be a theorist.

The ILCSC has asked that independent reviews be conducted for both the GDE TDR and the DBDs prior to the Vancouver meeting in Feb. 2013. This review would be conducted by the PAC, augmented by additional experts from the detector side (IDAG members?). Recommended changes should be implemented before the formal submission of the documents to ICFA at the Lepton Photon Conference in San Francisco in June.

The GDE cost estimate (not the detector estimates) should be reviewed by an external panel consisting of some experts, some from outside HEP in late January, with a report submitted to ILCSC/LCB in Vancouver.