

## Cavity status; recent KEK activities

(1) STF CM-1 cavities are;


Only one VT(HIT-02) since last S0 meeting.

MHI-014: 3-rd VT:36MV/m (finished)

MHI-015: 4-th VT: 35.7MV/m(finished)

MHI-016: 2-nd VT:34MV/m (finished)


MHI-017: 1-st VT: 38MV/m (finished)

 MHI-018: 1-st VT: 31MV/m -> 2-nd VT 10MV/m heavy field emission

MHI-019: 2-nd VT: 37MV/m(finished)

 MHI-020: 1-st VT: 9MV/m heavy field-emission

MHI-021: 1-st VT: 38.9MV/m (finished)

 MHI-022: 1-st VT: 31.5MV/m

These three cavities were local grinding, and additional-EP for removing abrasive.  
After local grinding&EP, MHI-020 will be tested in this week (2<sup>nd</sup> test)

(2) New bender/KEK cavities;

TOS-02(w/o HOM): 1-st VT: 31.2MV/m, 2-nd VT:32.7MV/m

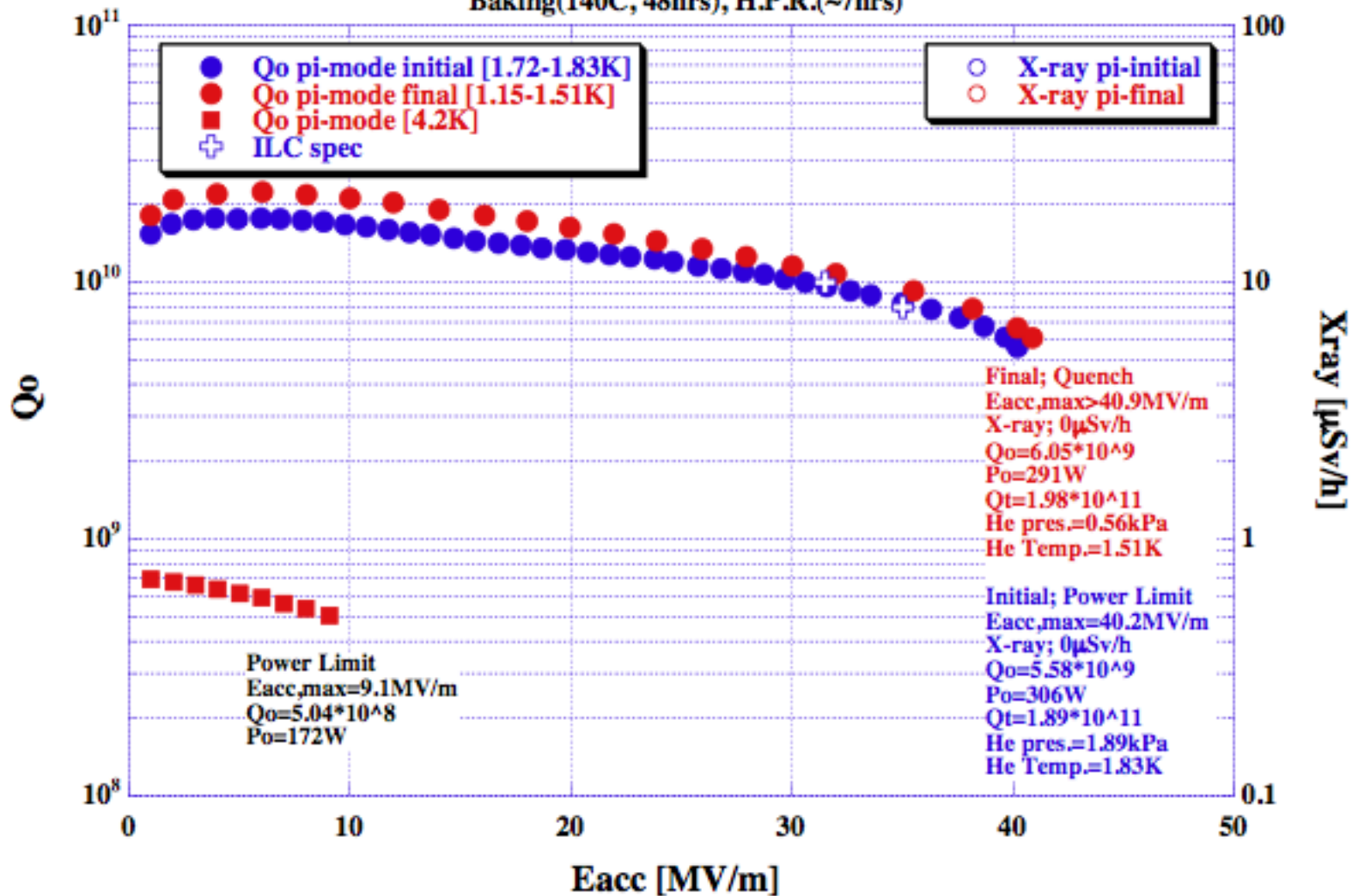
HIT-02(with HOM): 1-st VT: 35.2MV/m, 2-nd VT:40.9MV/m

KEK-00(w/o HOM): 1-st VT: 26MV/m, 2-nd VT:29MV/m, 3-rd VT:24MV/m

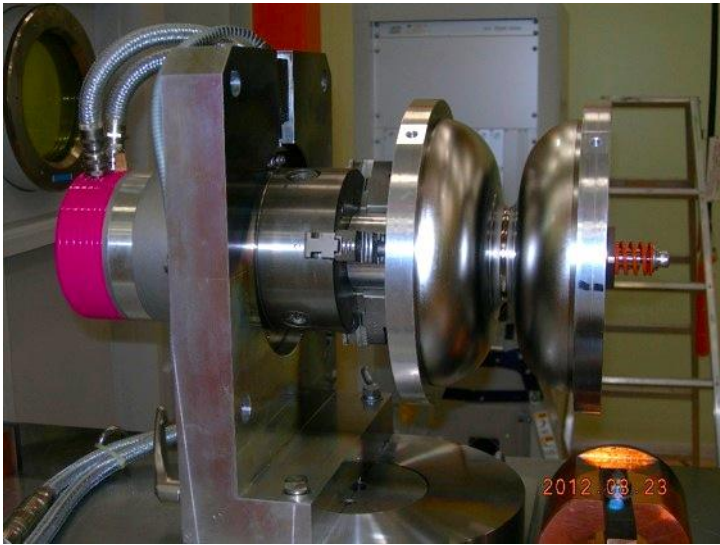
KEK-01(with HOM): under fabrication

# HIT-02(with HOM) 2-nd VT

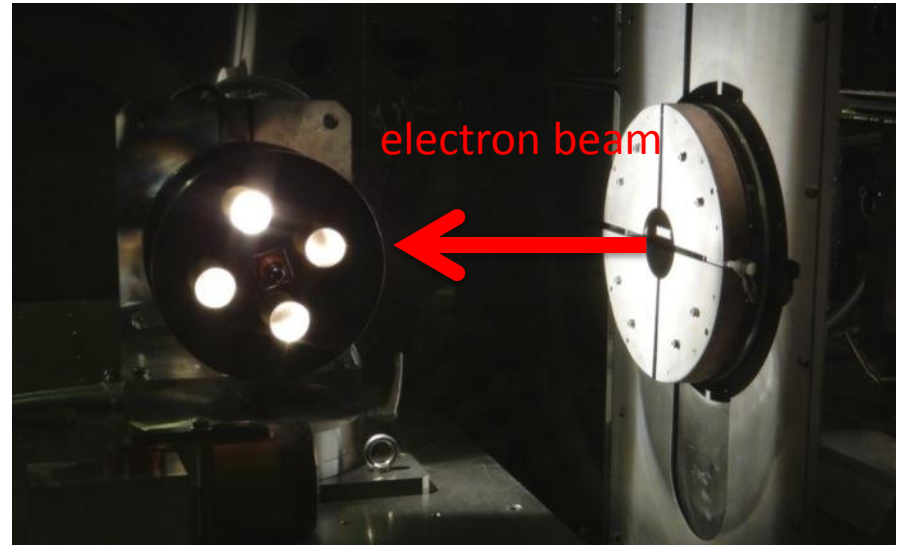
HITACHI 9cell Cavity HIT\_02 [With HOM Couplers]  
 2nd. Vertical Test 07/12/2012  
 EP-II(20 $\mu$ m), Water flow(1.5hrs), FM\_20 2%(50C,15min),  
 Baking(140C, 48hrs), H.P.R.(~7hrs)



KEK-02(with HOM) under fabrication at KEK CFF  
Dumbbell welding (Iris and stiffener) is on-going.



mounted on the motor



under EBW (looking from window)



EBW completed



EBW seam looks good