

News from Saclay

P. Colas, D. Attié, S. Herlant, W. Wang

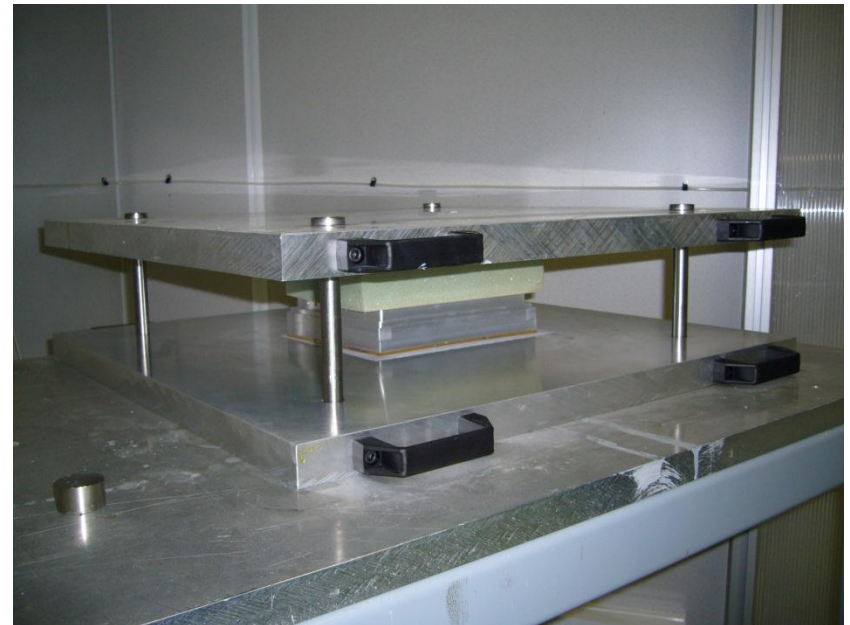
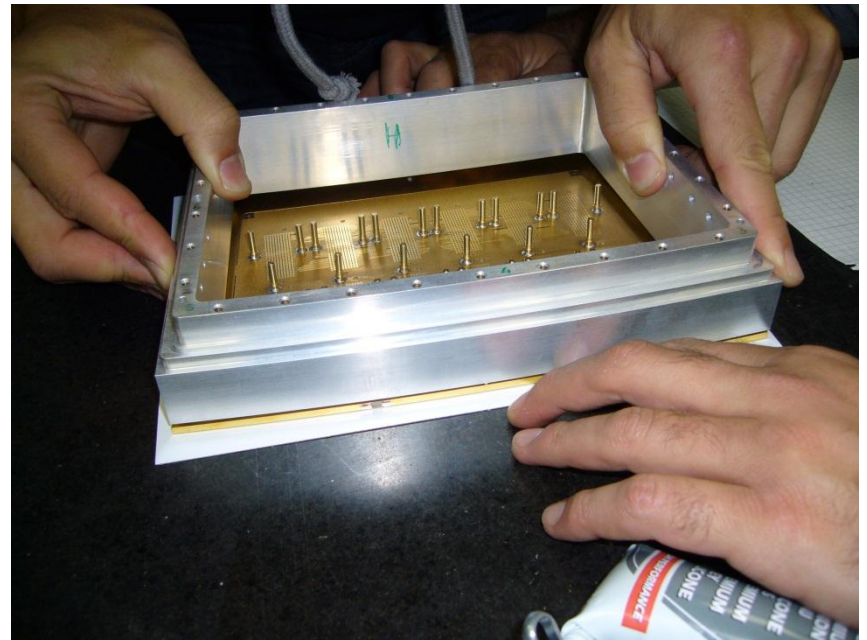
Mounting 4 new detectors at CERN



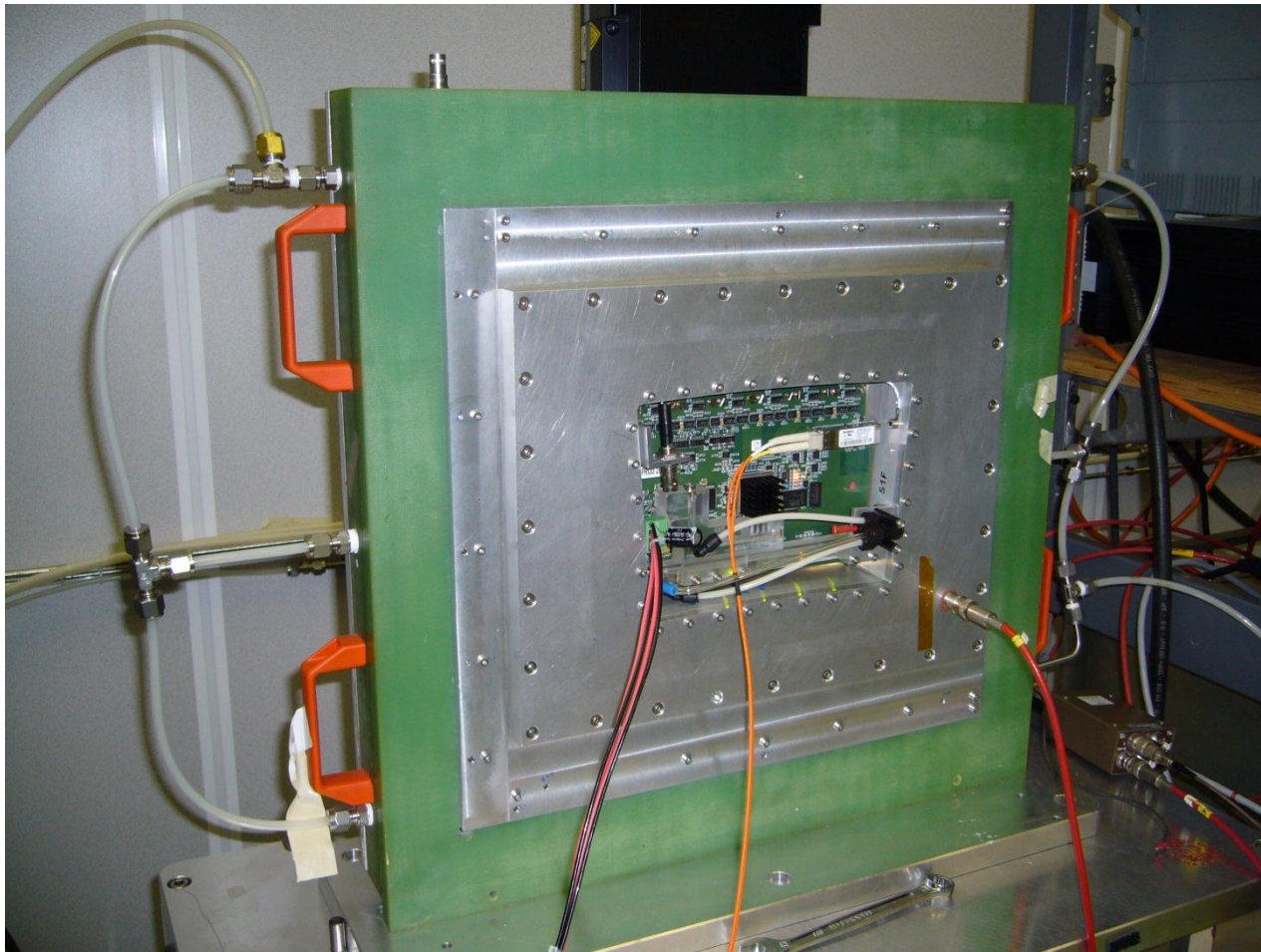
6 modules have been tested at DESY in July 2012, one from 2011 with known design flaws and 1 from pre-serie. Some were assembled at the last minute at DESY

This time, we aim at having 7 new modules and 2 spares, better tested and calibrated.

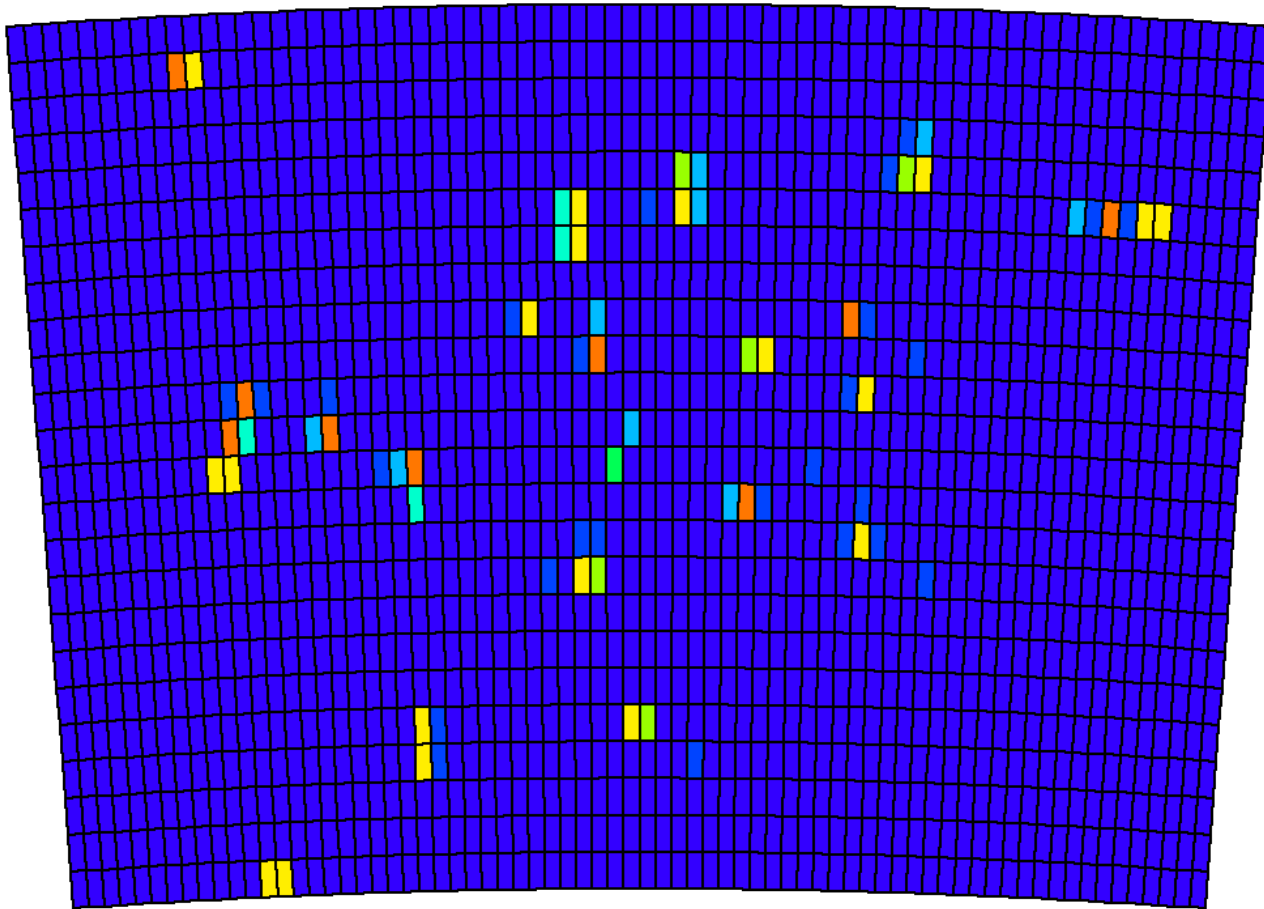
Also final installation work of the cosmic trigger configuration and monitoring is needed (dec. 10 and 11?)



And testing them on the bench



Evt with uncollimated source (each cluster is an X-ray photon)

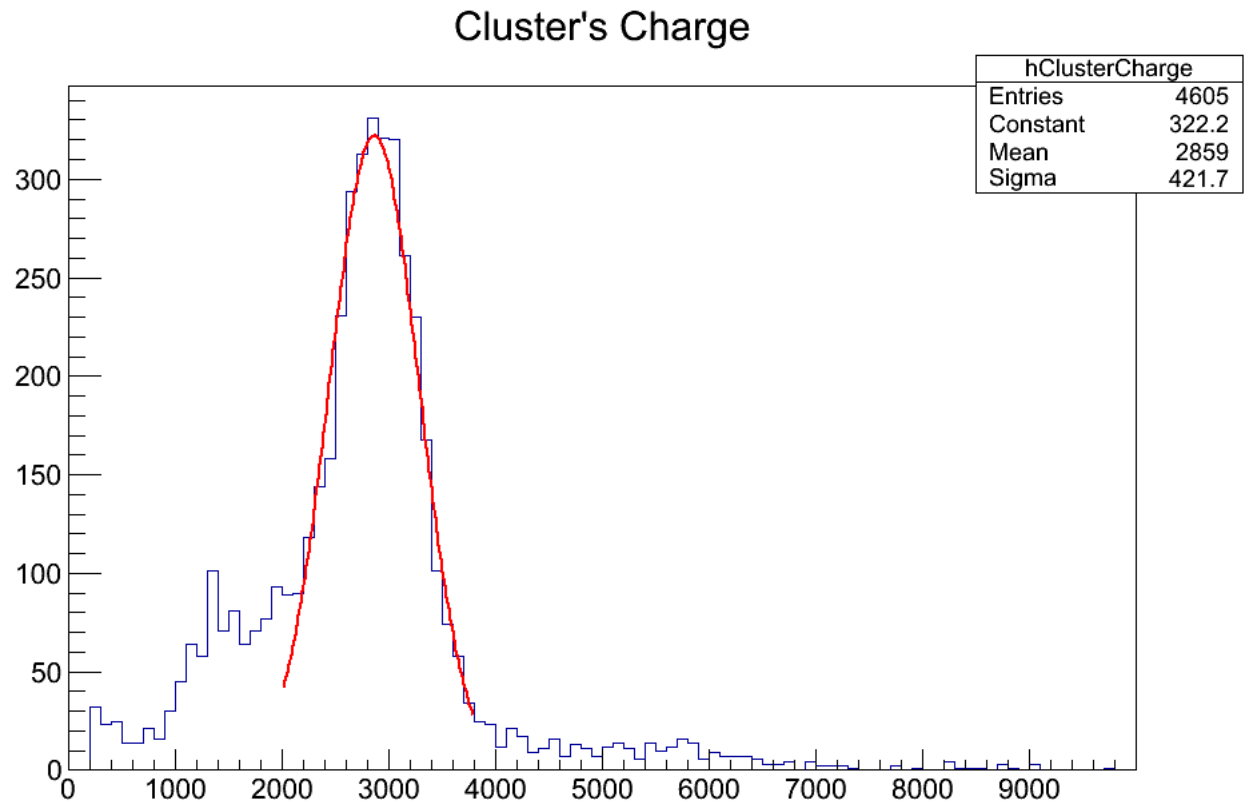


Calibration with 55Fe source

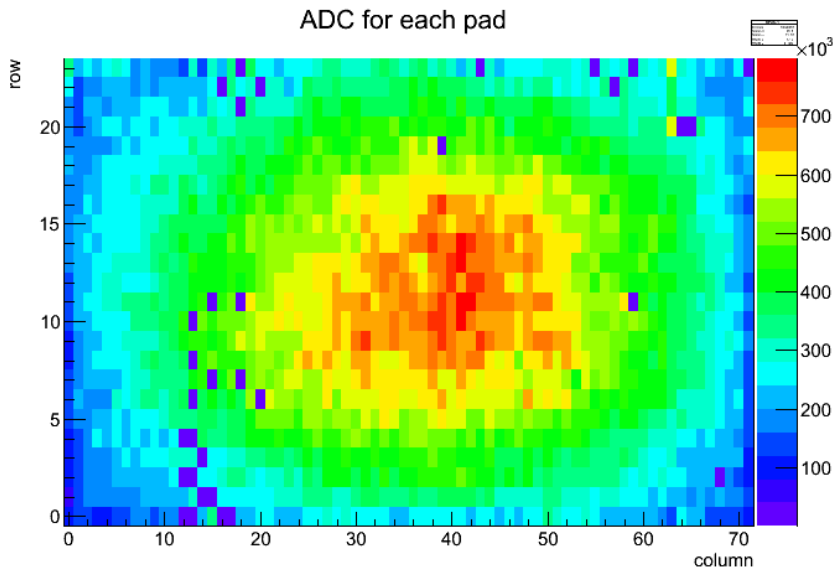
Raw data with sum of signal in a cluster (using collimated source)

Energy Resolution (preliminary) : 15% rms

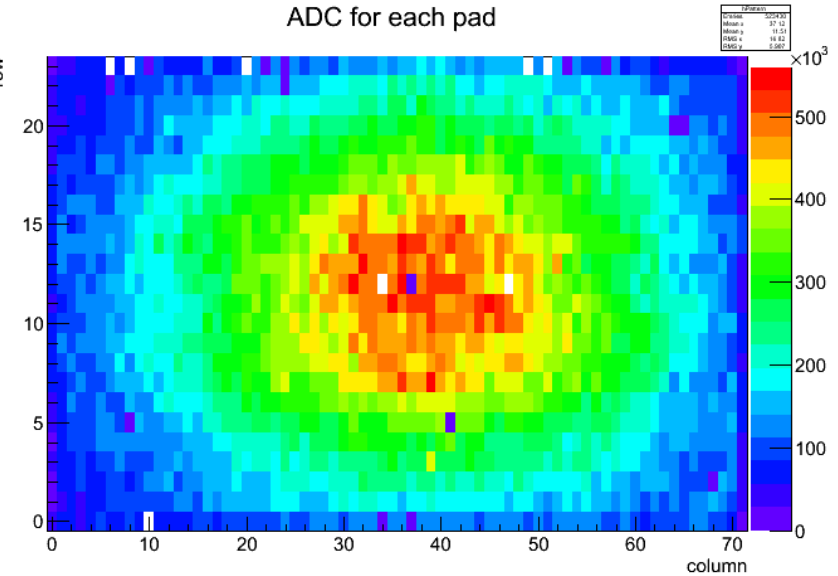
Gain ~2800



Map of the disconnected or dead channels



Module S1D - ~30 disconnected pads



Module S7H - ~5 disconnected pads +
some at the boarder

Schedule

- Reserve January 28 to February 8 to take good data at DESY (before VCI, and last chance for Wenxin's thesis)
- Analysis of July data in progress. Analysis meeting on December 10 or 11?
- In the meantime (and after), there is a lot of work to study the modules one by one, understand calibration, etc...