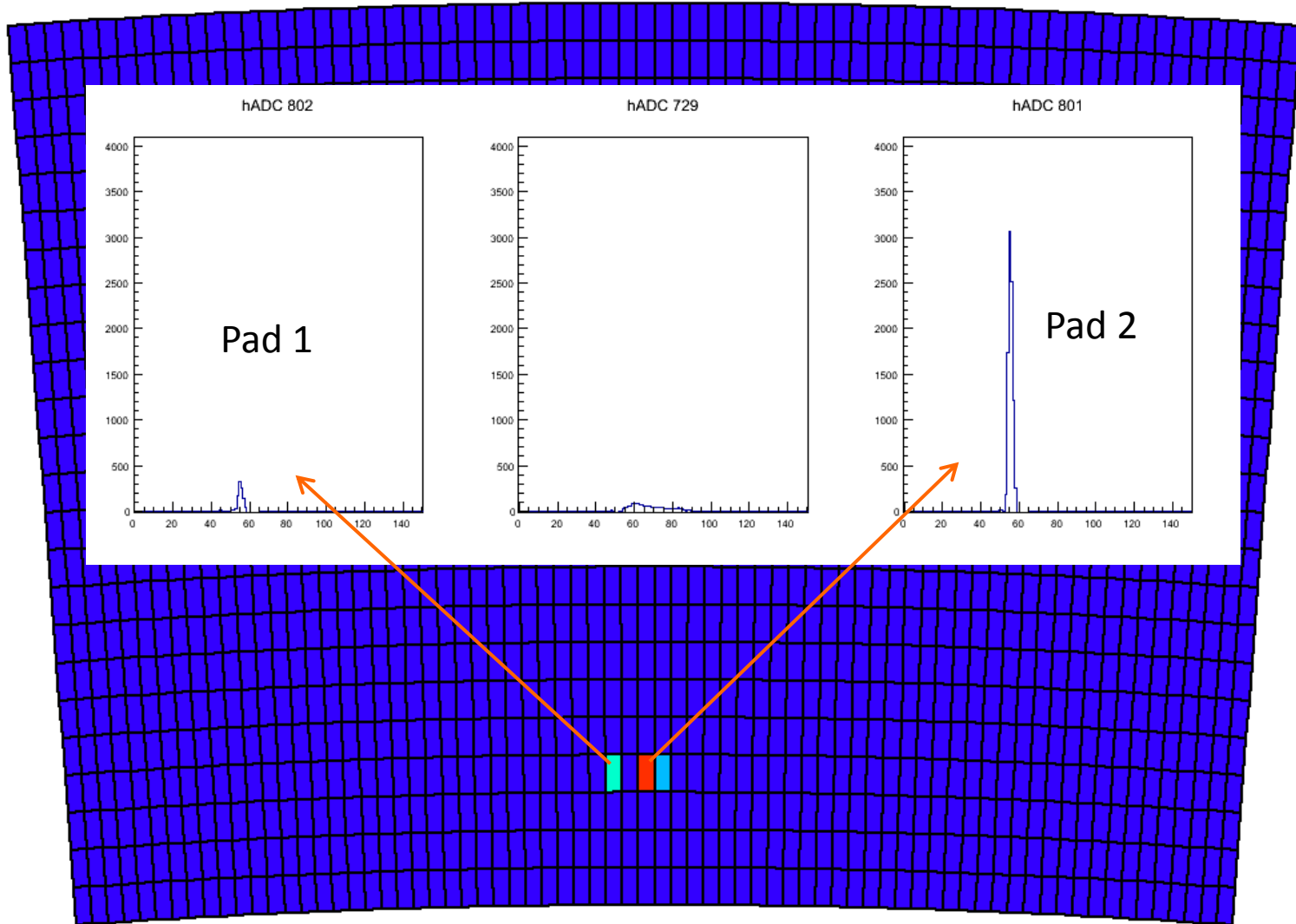


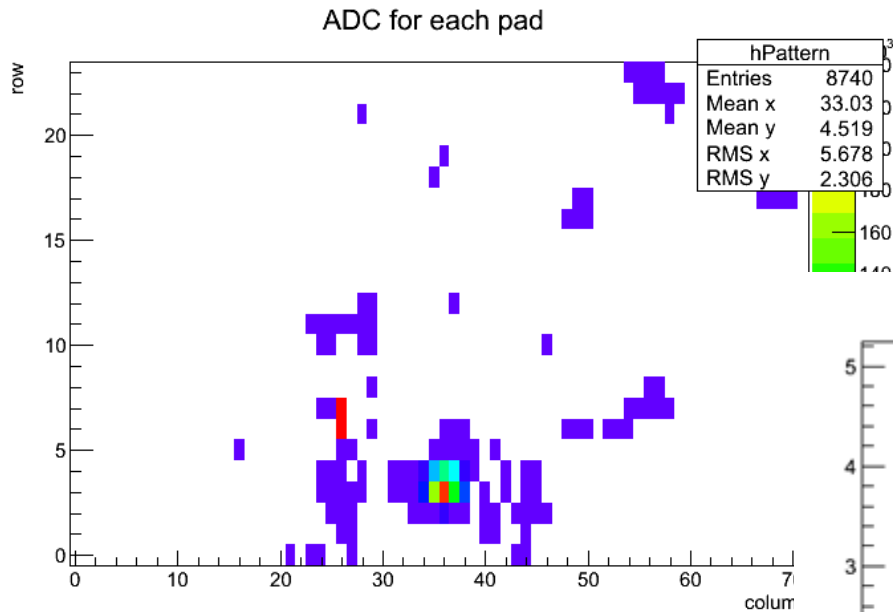


Study of cross-talk with ^{55}Fe evts, and distortions at $B=0$ and 1T

Cross-talk

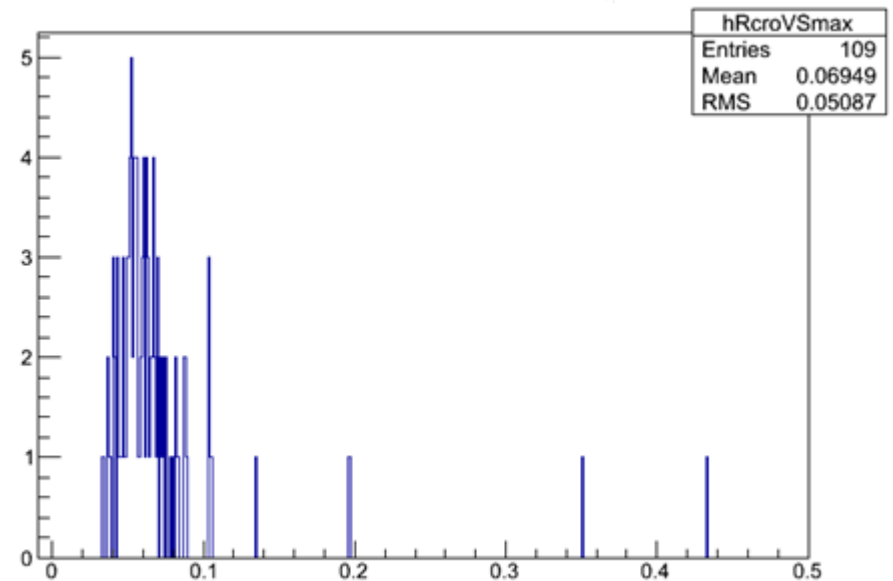


Cross-talk at different positions and detectors

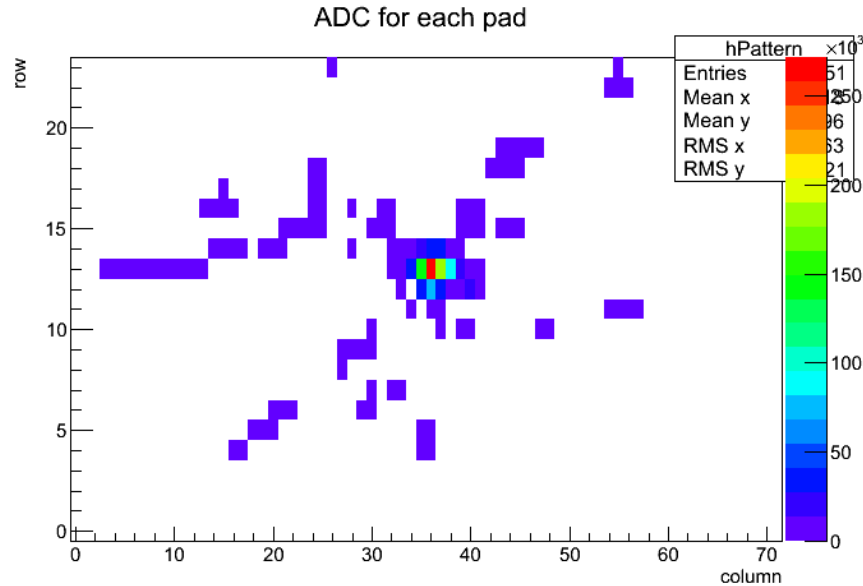


$$\text{Ratio} = \frac{\text{Charge on pad 1}}{\text{Charge on pad 2}}$$

S9A_Femi2 RUN2552

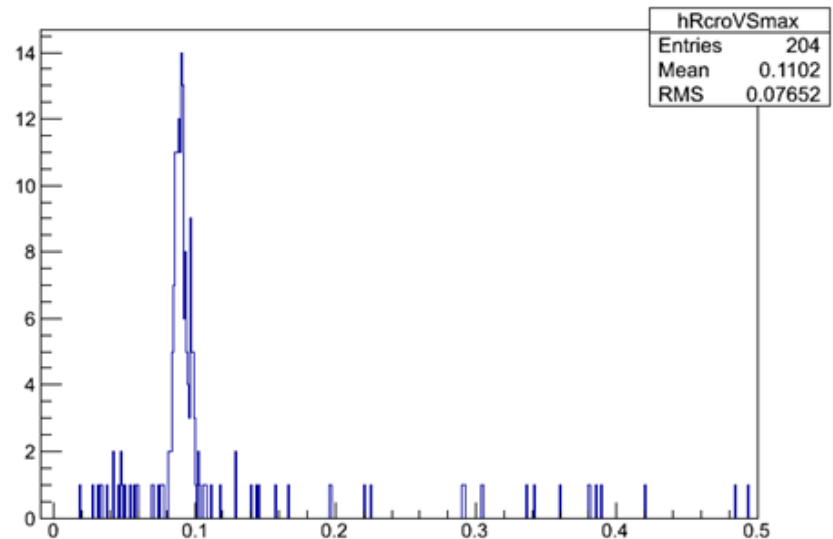


Cross-talk at different positions and detectors

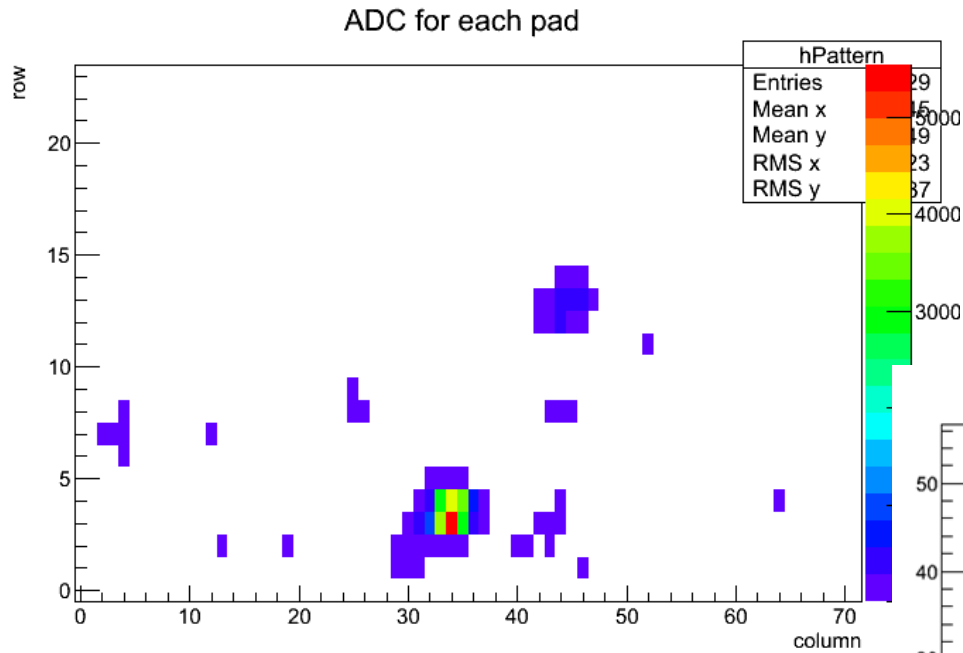


$$\text{Ratio} = \frac{\text{Charge on pad 1}}{\text{Charge on pad 2}}$$

S7H_Femi1 RUN2544

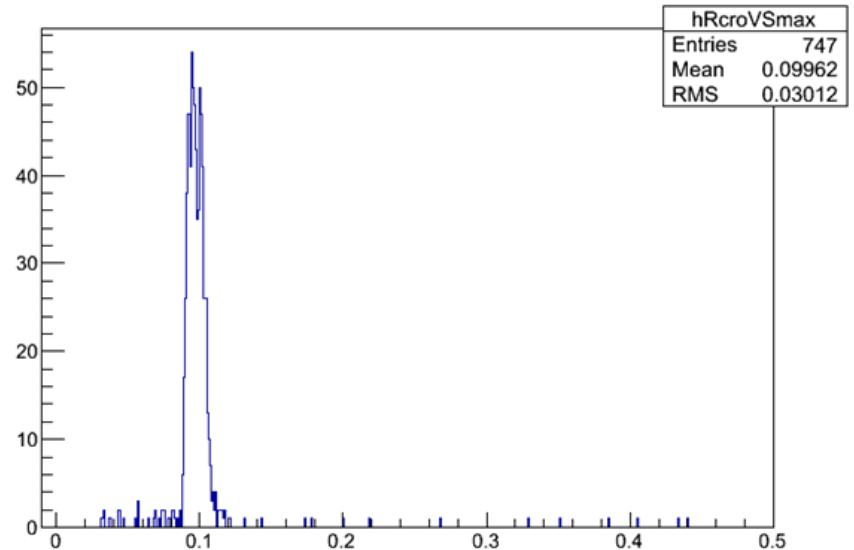


Cross-talk at different positions and detectors

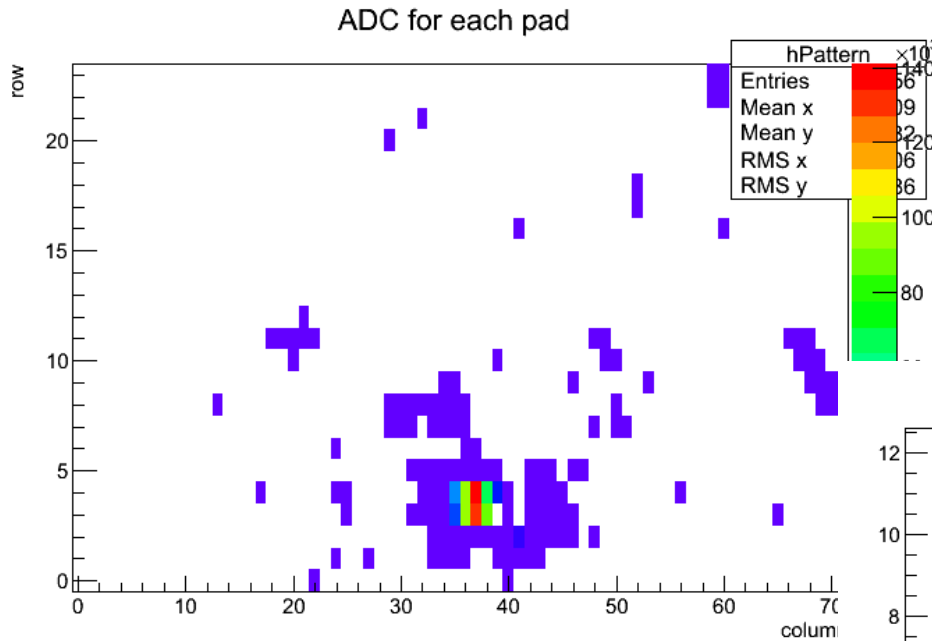


$$Ratio = \frac{Charge\ on\ pad\ 1}{Charge\ on\ pad\ 2}$$

S4G_Femi3 RUN2556

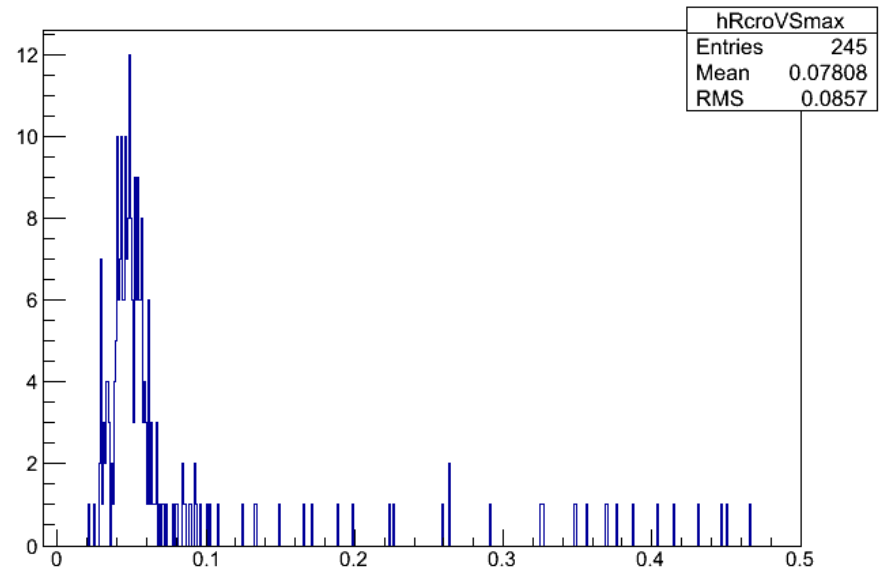


Cross-talk at different positions and detectors

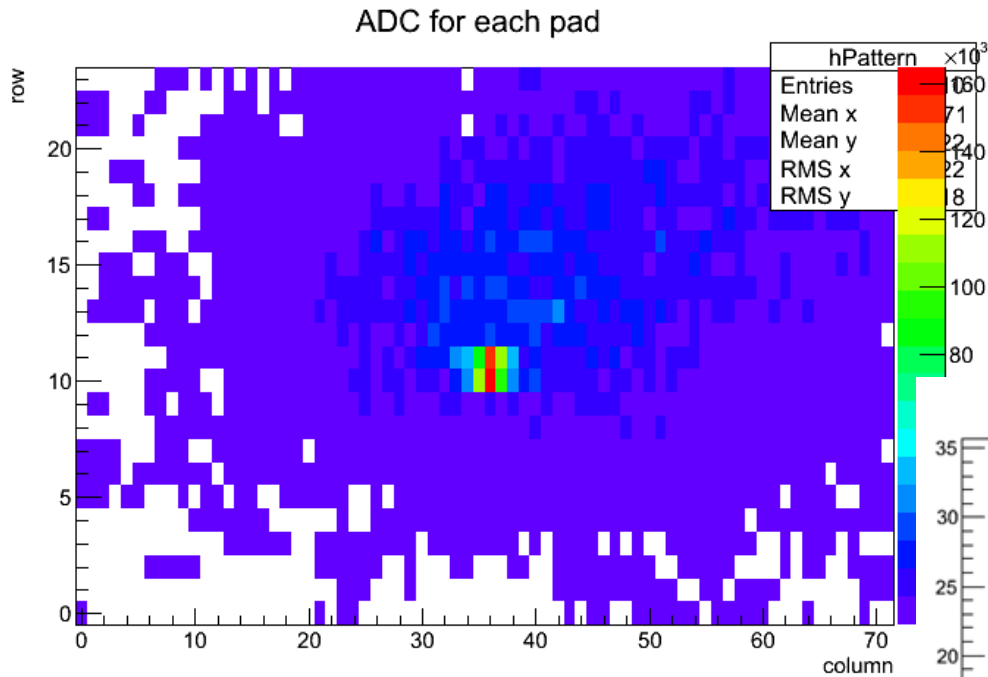


$$Ratio = \frac{Charge\ on\ pad\ 1}{Charge\ on\ pad\ 2}$$

S3B_Femi7 RUN2559

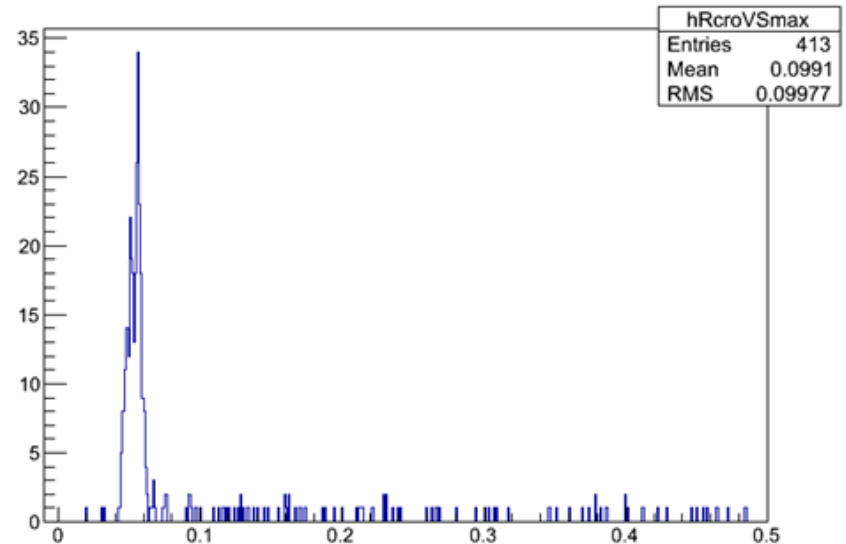


Cross-talk at different positions and detectors

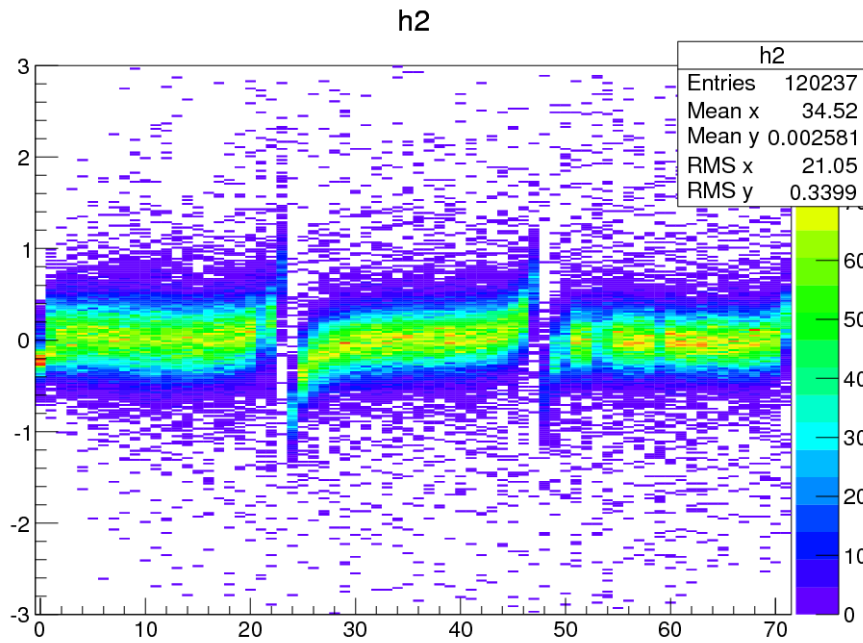


$$Ratio = \frac{Charge\ on\ pad\ 1}{Charge\ on\ pad\ 2}$$

S8G_Femi4 RUN2548

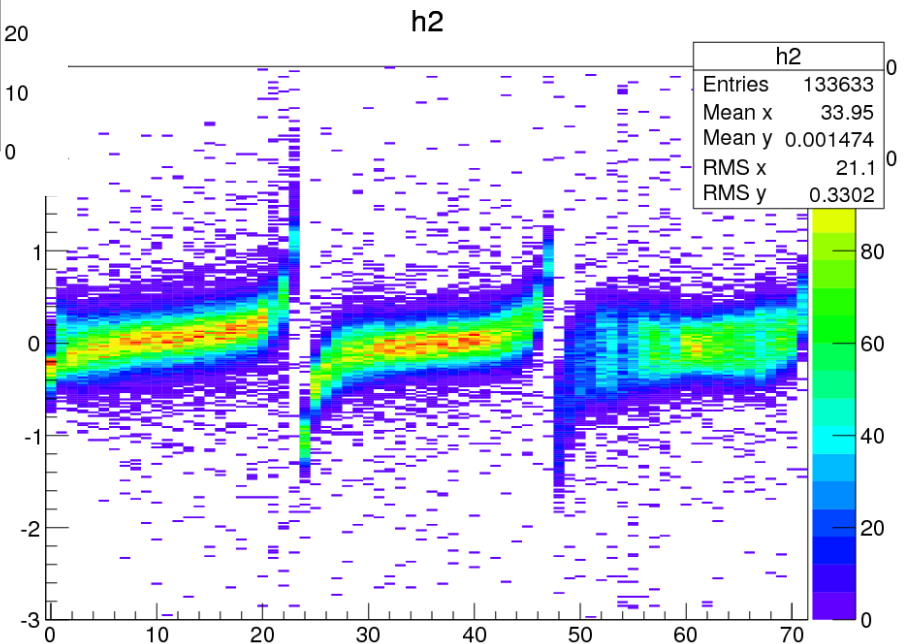


Residual

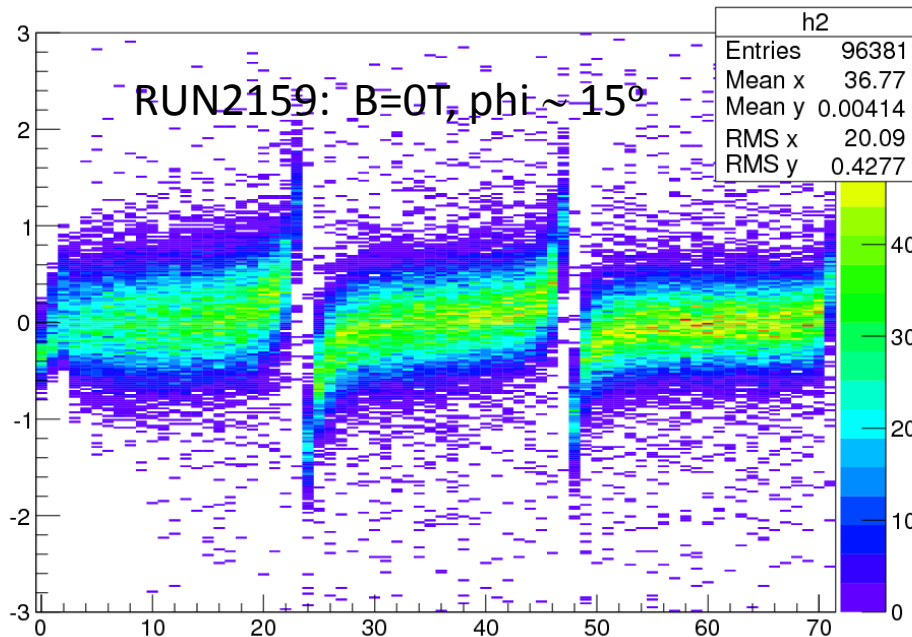
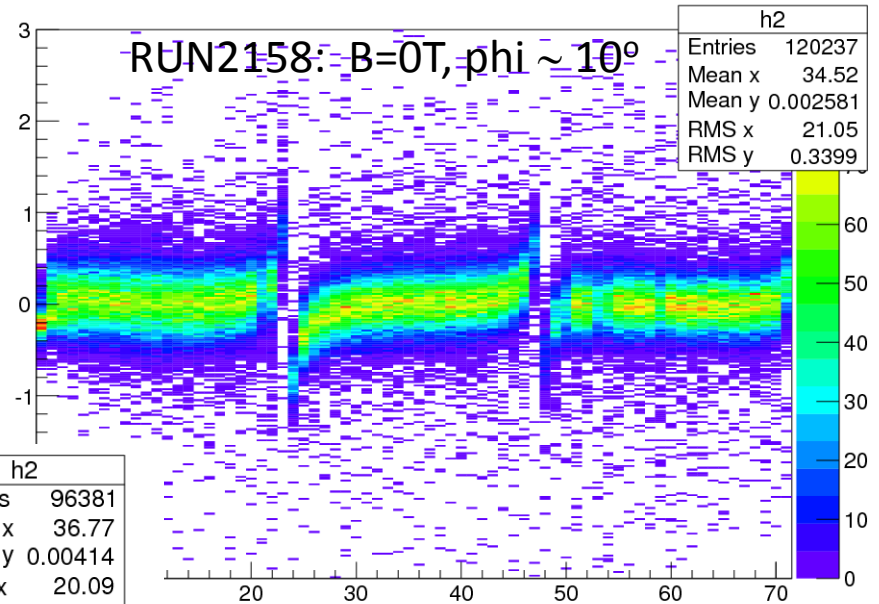
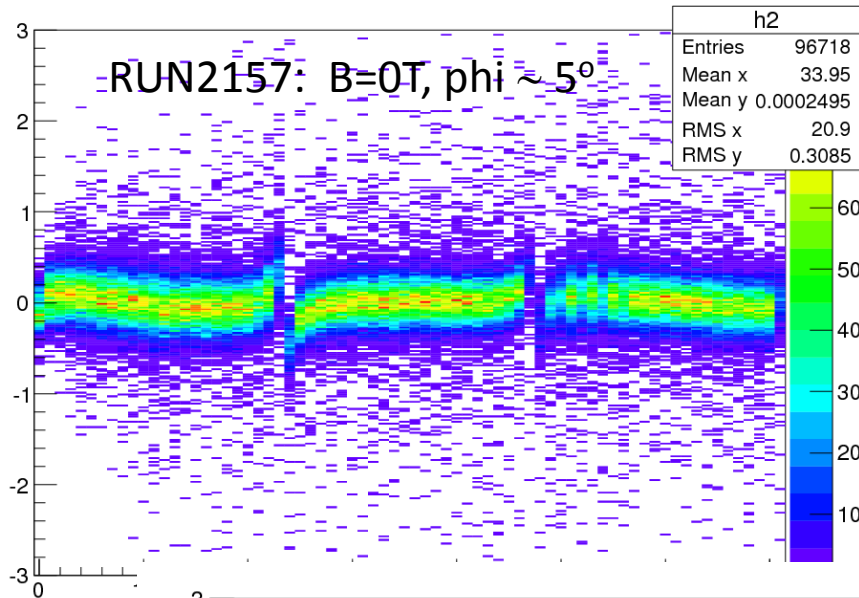


RUN2158: B=0T, $\phi \sim 10^\circ$

RUN2161: B=1T, $\phi \sim 10^\circ$



Residual (B=0T)



Residual (B=1T)

