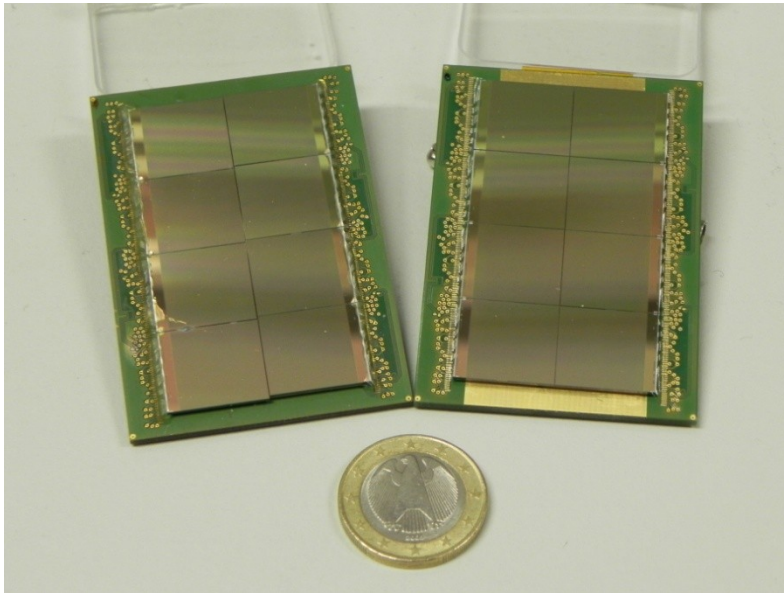
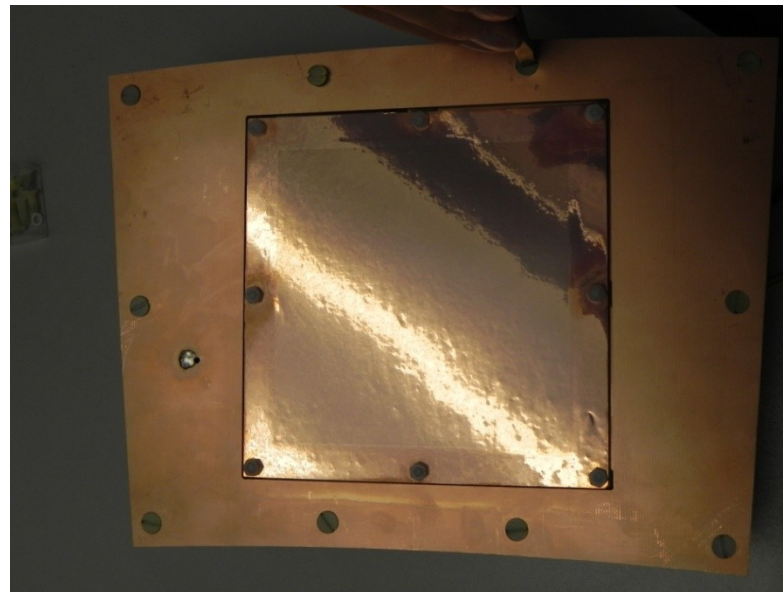
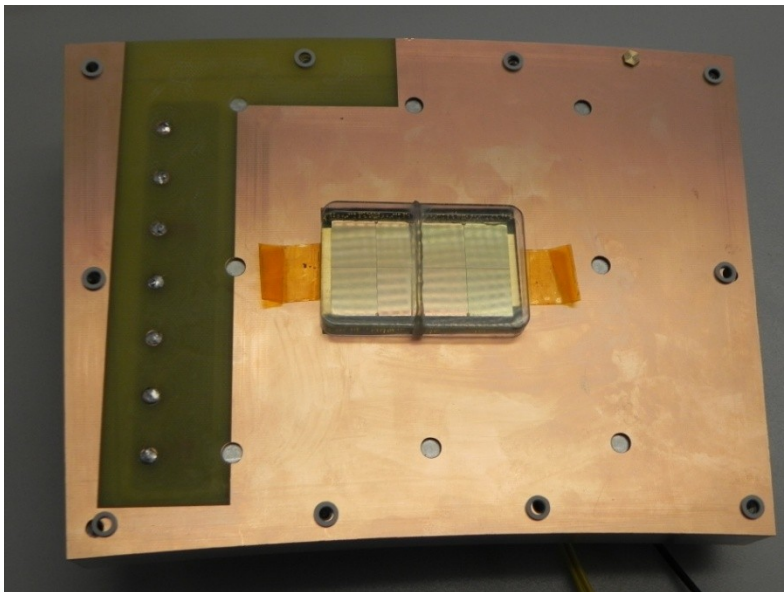


Test beam with Pixel modules

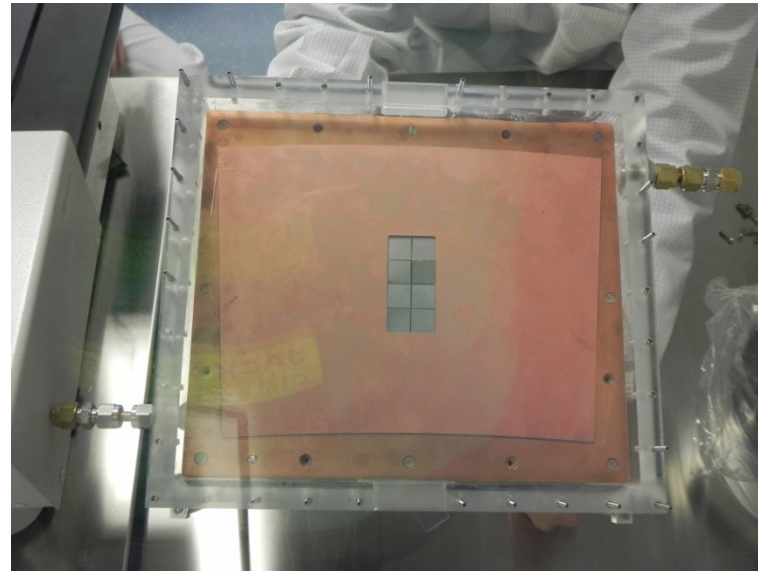
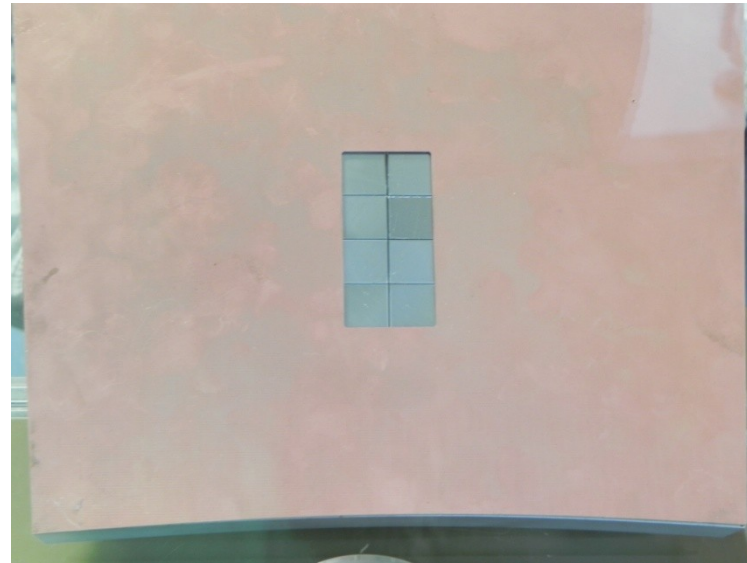
GEM-Module



2 Oktoboards with bare Timepix chips
produced and tested
Modules is assembled
GEMs tested (500 V @ N₂ -> 0.7 nA leakage current)
380 V @ Ar:iButane 95:5 stands for ~30 min.



Assembly of InGrid Module



InGrid Data Set



Voltage scan (290 V - 390 V)

Varying voltage on anode (330 V - 410 V, with grid on 350 V)

z-scan with $B = 0$ T, $E = 230$ V/cm

z-scan with $B = 0$ T, $E = 130$ V/cm

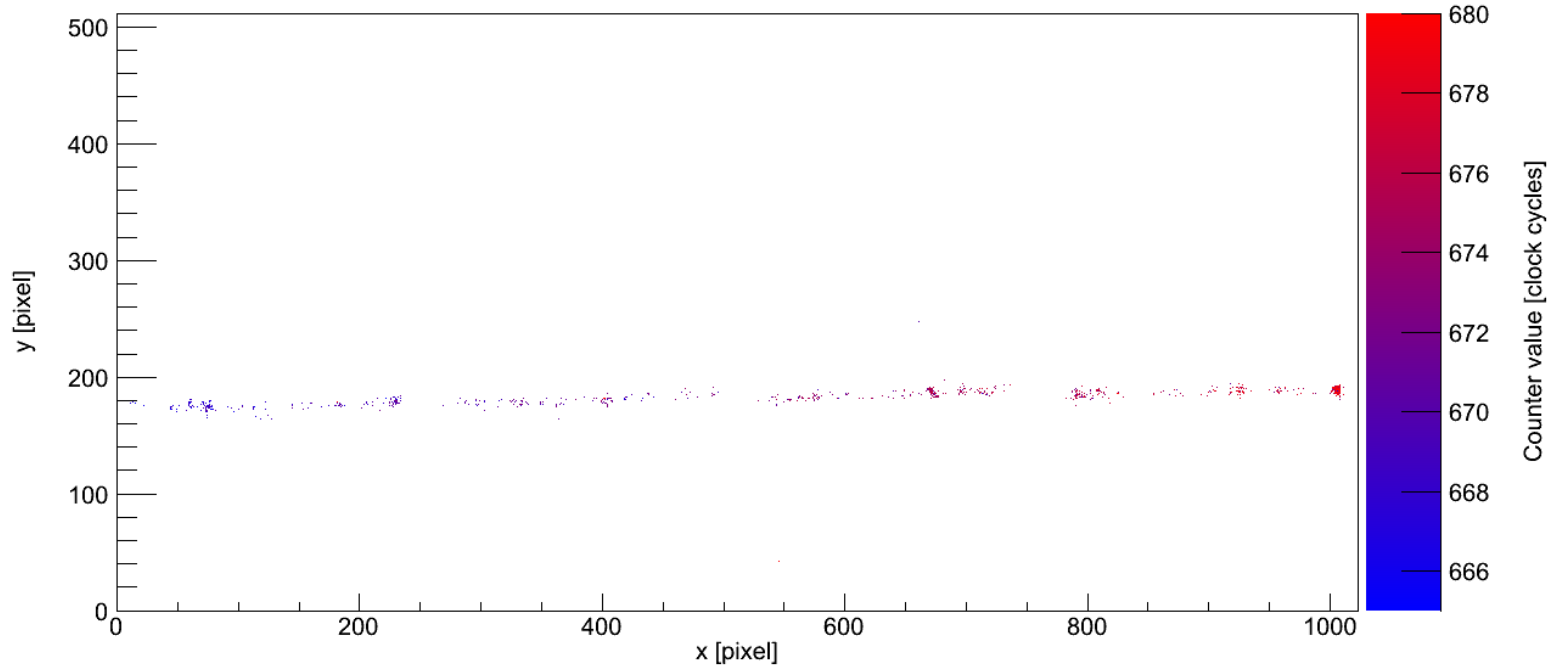
z-scan with $B = 1$ T, $E = 230$ V/cm

z-scan with $B = 1$ T, $E = 130$ V/cm

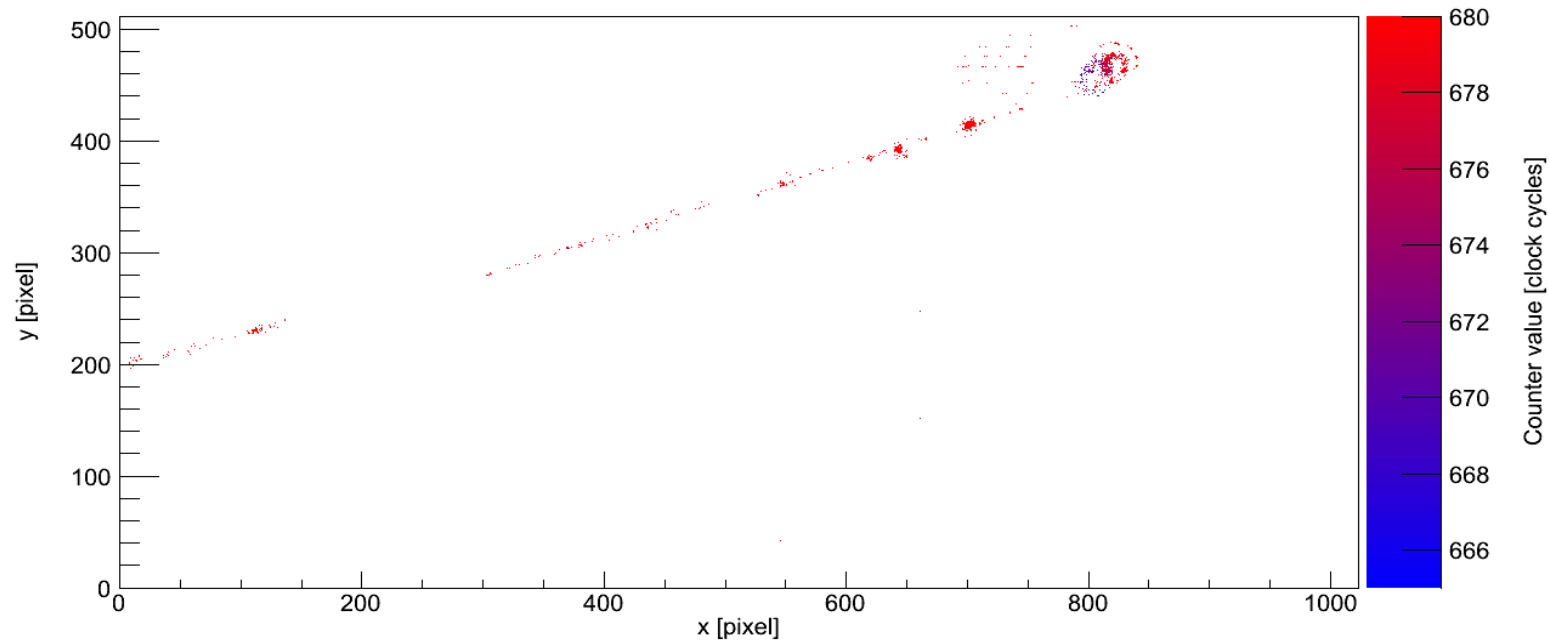
Momentum scan $p = 1 - 6$ GeV/c

Theta-scan $\theta = -10^\circ - 30^\circ$

InGrid event pictures



Gas: T2K
 $E_{\text{drift}} = 130 \text{ V/cm}$
 $B = 1 \text{ T}$
 $V_{\text{grid}} = 350 \text{ V}$
 $V_{\text{anode}} = 385 \text{ V}$



Schedule with GEM modules



Voltage scan with $B = 0$ T

Voltage scan with $B = 1$ T

z-scan with $B = 0$ T, $E = 240$ V/cm

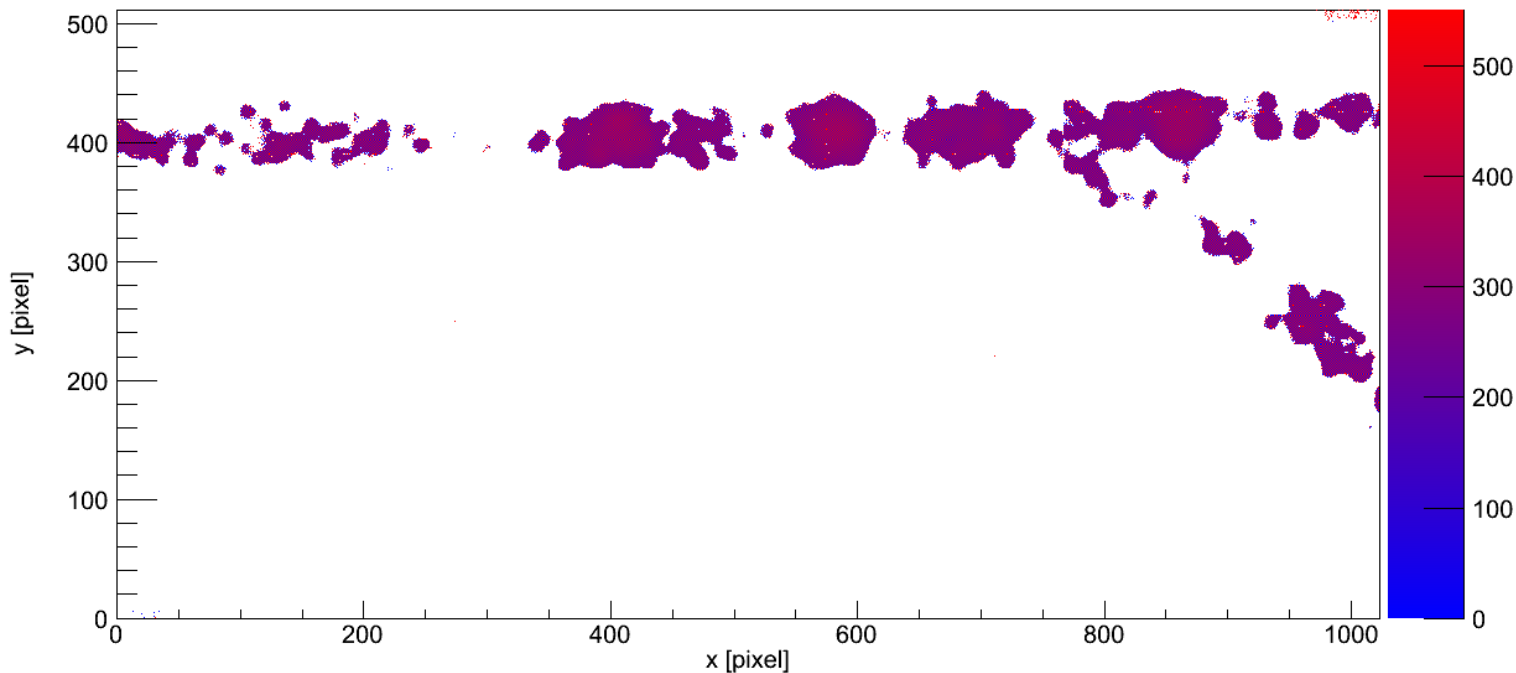
z-scan with $B = 1$ T, $E = 240$ V/cm

z-scan with $B = 1$ T, $E = 130$ V/cm

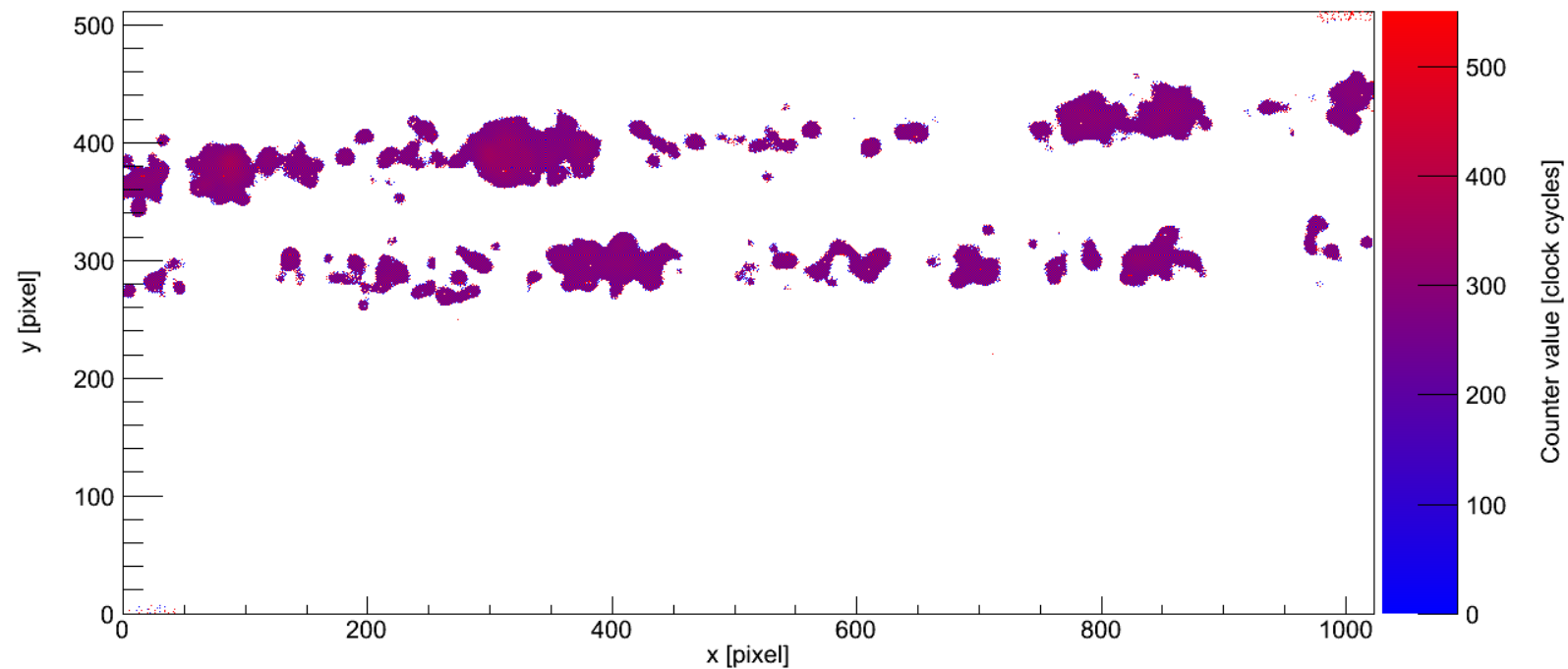
Momentum-scan $p = 1 - 6$ GeV/c

phi-scan

Event pictures with GEMs



Gas: T2K
 $E_{\text{drift}} = 240 \text{ V/cm}$
 $B = 1 \text{ T}$
 $V_{\text{GEM}} = 280 \text{ V}$
 $V_{\text{ind}} = 2 \text{ kV/cm}$
 $V_{\text{trans2}} = 1.5 \text{ kV/cm}$
 $V_{\text{trans1}} = 2 \text{ kV/cm}$



**Thanks to everyone who was
helping!**