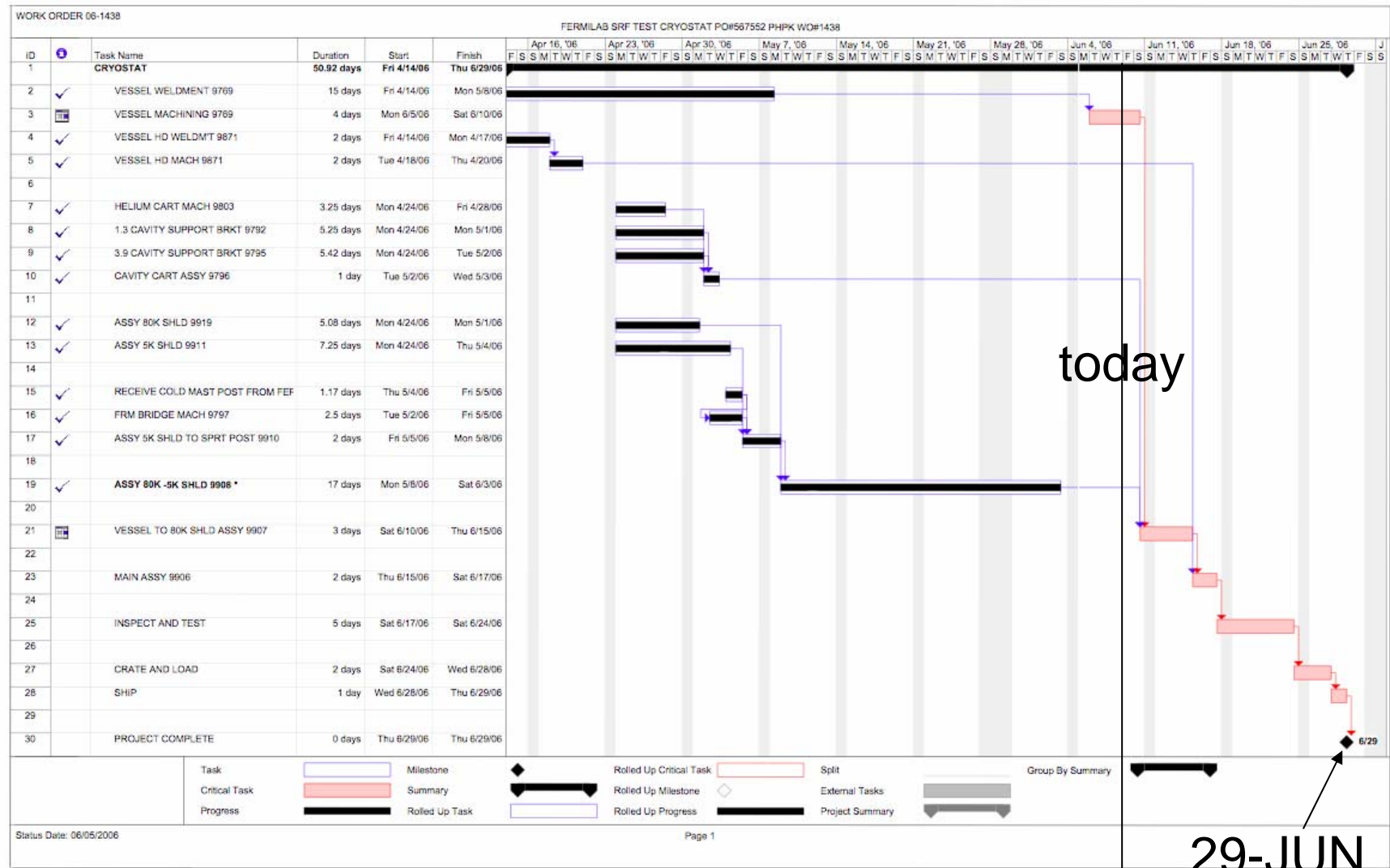


Horizontal Test Stand Update

A. Hocker

8-JUN-2006

Latest cryostat schedule (PHPK)



8-JUN-2006

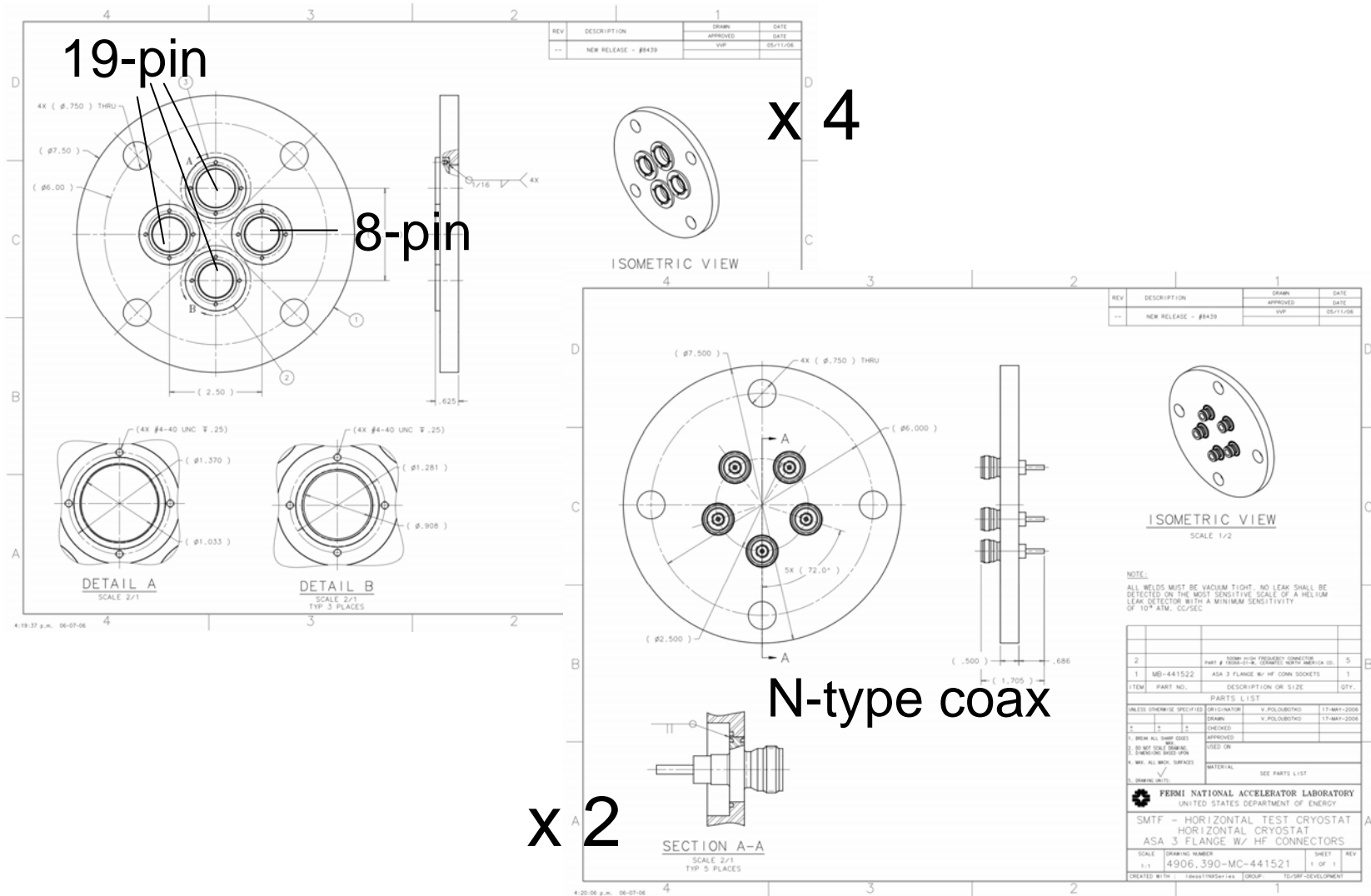
A. Hocker, ILCTA Meeting

2

Misc. cryostat components

- Cold mass support posts:
- Cryostat support frame: DONE
- Coupler support brackets:
- Cavity installation cart: DESIGNED, due 30-JUL
- Instrum. feed-thru flanges: DESIGNED, due 29-JUN

Instrumentation feed-thrus



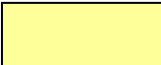


Cryostat instrumentation

SMTF Horizontal Test Cryostat - Vacuum vessel
 Valve and Instrumentation List
 1 June 2006

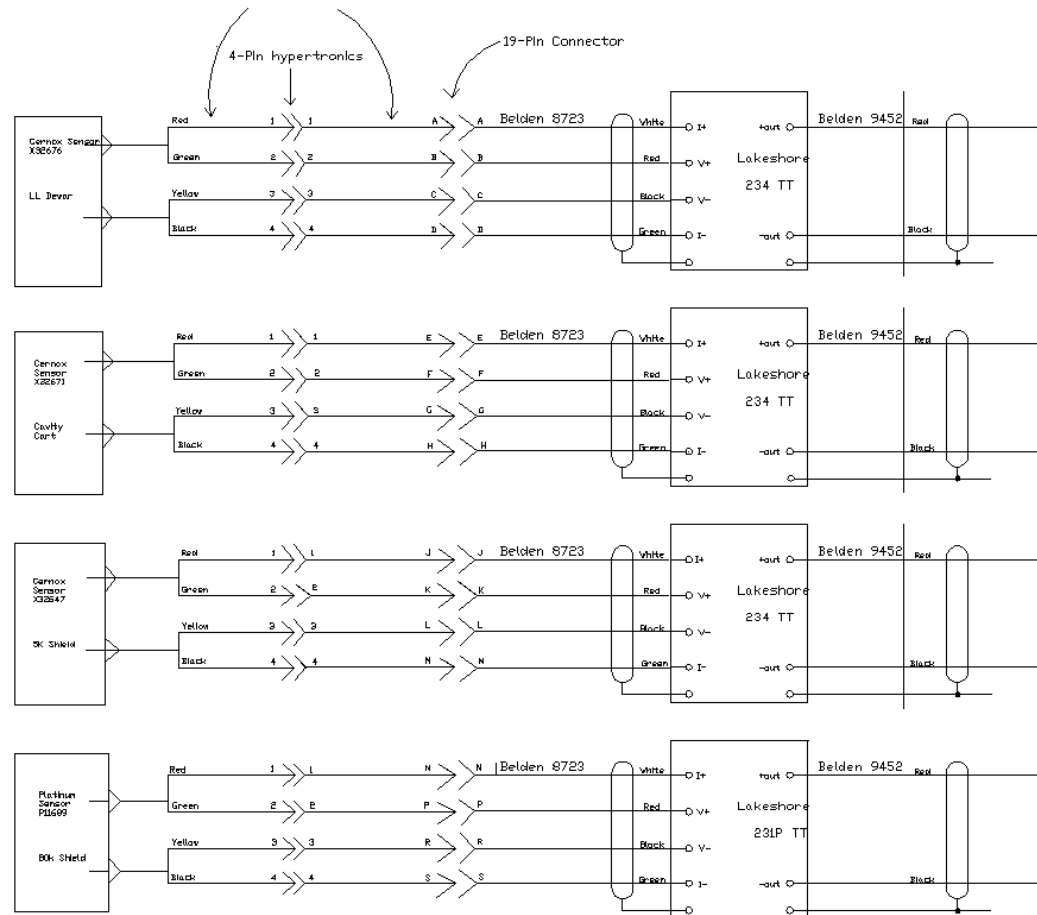
Instrumentation	Location	Model	Company	Range	Readback	Comment
LL-RF01	LHe level for RF vessel. Spare included	9-inch active	AMI	0 -100 %	4-20 mA	Monitor: AMI Model 135-2K
LL-RF02	Spare LHe level	9-inch active	AMI	0 -100 %	4-20 mA	Monitor: AMI Model 135-2K
PI-VV01	cryovessel vacuum pressure-low range	ITR90 Ionivac	Leybold	3.75E-10 - 750 torr	0-10 V	
PI-VV02	Helium pumping pressure - high range	FPA	Sensotec	0-50 psia	4-20 mA	Sensotec amplifier model U3W; already calibrated at cold temp
PI-VV03	Helium pumping pressure - low range	230EA-00100BC	MKS	0-100 torr	4-20 mA	
XE-VV01	Helium vessel dewar - cartridge heater	E1J39	Watlow	120V-50W	I/O	Suggested power controller: Watlow DA10-24F0-0000
TI-VV01	80K Thermal shield	PT102	Lake Shore	40 K-300 K	4-20 mA	Transmitter: Lake Shore Model 231P
TI-VV02	5K Thermal shield	CX-1050-SD	Lake Shore	0.1K-300K	4-20 mA	Transmitter: Lake Shore Model 234
TI-RF04	Helium cavity cart	CX-1050-SD	Lake Shore	0.1K-300K	4-20 mA	Transmitter: Lake Shore Model 234
TI-VV03	LHe dewar	CX-1050-SD	Lake Shore	0.1K-300K	4-20 mA	Transmitter: Lake Shore Model 234

Instrumentation	Location	Model	Company	Range	Readback	Comment
PI-RF01	RF Cavity vacuum pressure - low vacuum range	(manometer)		1E-4 - atmos	0-10 V	
PI-RF02	RF Cavity vacuum pressure - high vacuum range	ITR90 Ionivac with display	Leybold	3.75E-10 - 750 torr	0-10 V	
PI-RF03	Warm side of input coupler - low vacuum range	(manometer)		1E-4 - atmos	0-10 V	
PI-RF04	Warm side of input coupler - high vacuum range	ITR90 Ionivac with display	Leybold	3.75E-10 - 750 torr	0-10 V	

-  = in hand
-  = on order
-  = dunno

Instrumentation work (S. Ben-Judah)

RTDs in
cryostat



to
AD/Cryo
PLC

Instrumentation pre-checkout in progress

Cavity tests --- what to log

- DESY HTS record:
 - Q_0 vs. E_{acc}
 - X-ray flux vs. E_{acc}
 - Cryo losses vs. E_{acc}
 - Coupler processing: P_{for} , pulse length vs. time
 - HOM coupler/cavity pick-up calibrations
- We'll add:
 - Dark current vs. E_{acc}