

ILC(TA) Instrumentation: Status Update August 2006

Manfred Wendt
Fermilab

August 17, 2006

International Linear Collider at Fermilab

Only little progress since last status report July 2006:

GDE support activities:

- VLCW participation.
- Parametric spreadsheet lists M&S costs and manpower requirements for all the ILC instrumentation (~ 90 % complete).
- Review presentation of the Fermilab cold cavity BPM development. In general positive echo. Remarks on the EM-design from Zenghai Li (SLAC), concerning parasitic modes in the coupling slots, and on the slot window ceramics (their brazing and thermal issues) from Carlo Pagani (INFN).

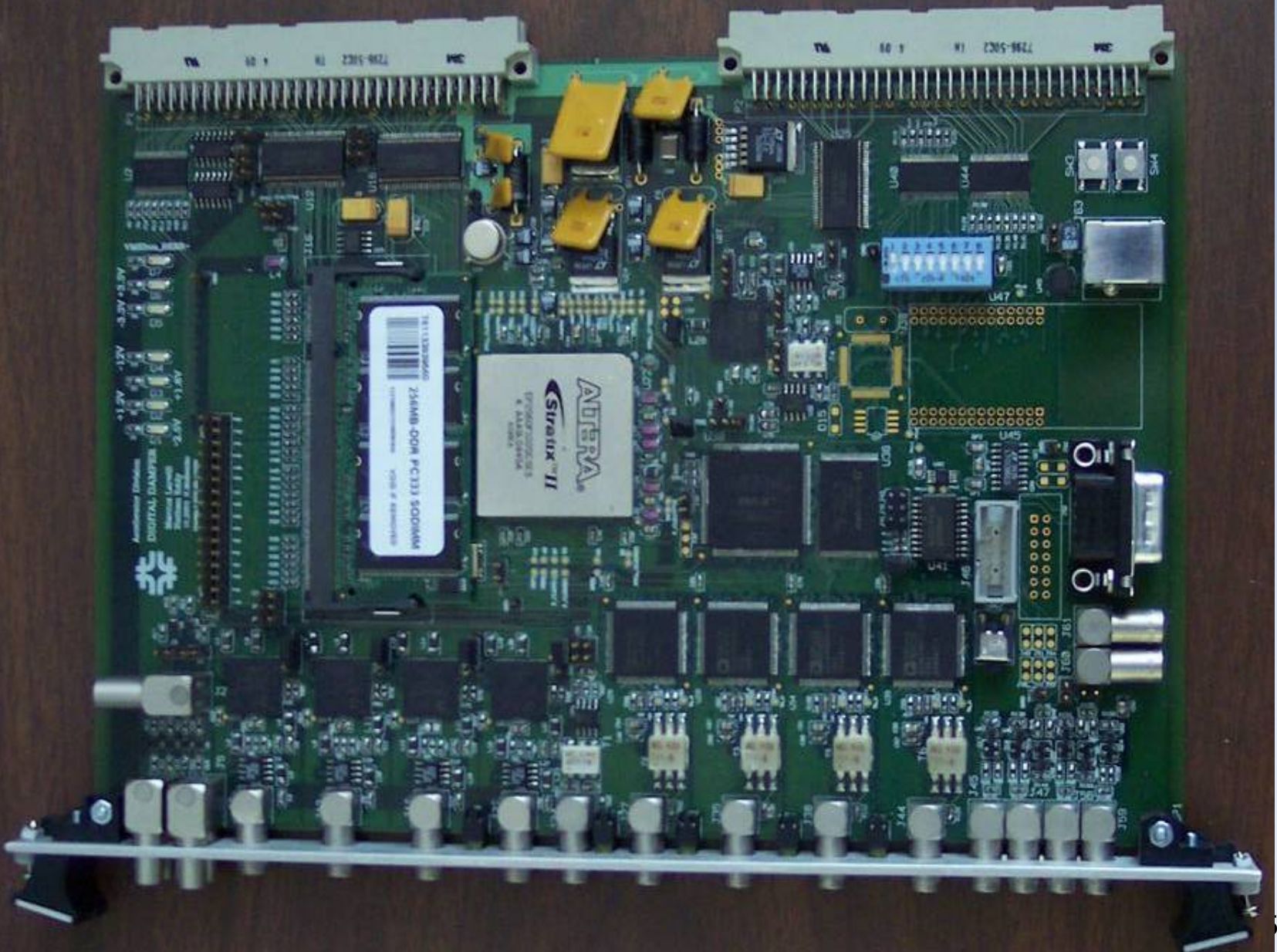
ILCTA instrumentation activities:

- Recent progress only on the cold cavity BPM.
- Industry and SLAC consultations for the brazing of the ceramic slot windows. The metallized ceramics are already in house.
- In-house manufacturing of the test structure currently interrupted because of changes and hints to design details from industry and SLAC. Waiting for another (3rd) industry quote on the brazing.
- Consultants are basically positive on the BPM design, but believe we will need several models to fine tune and optimize the exact geometry of the ceramic slot window assembly.

International Linear Collider at Fermilab

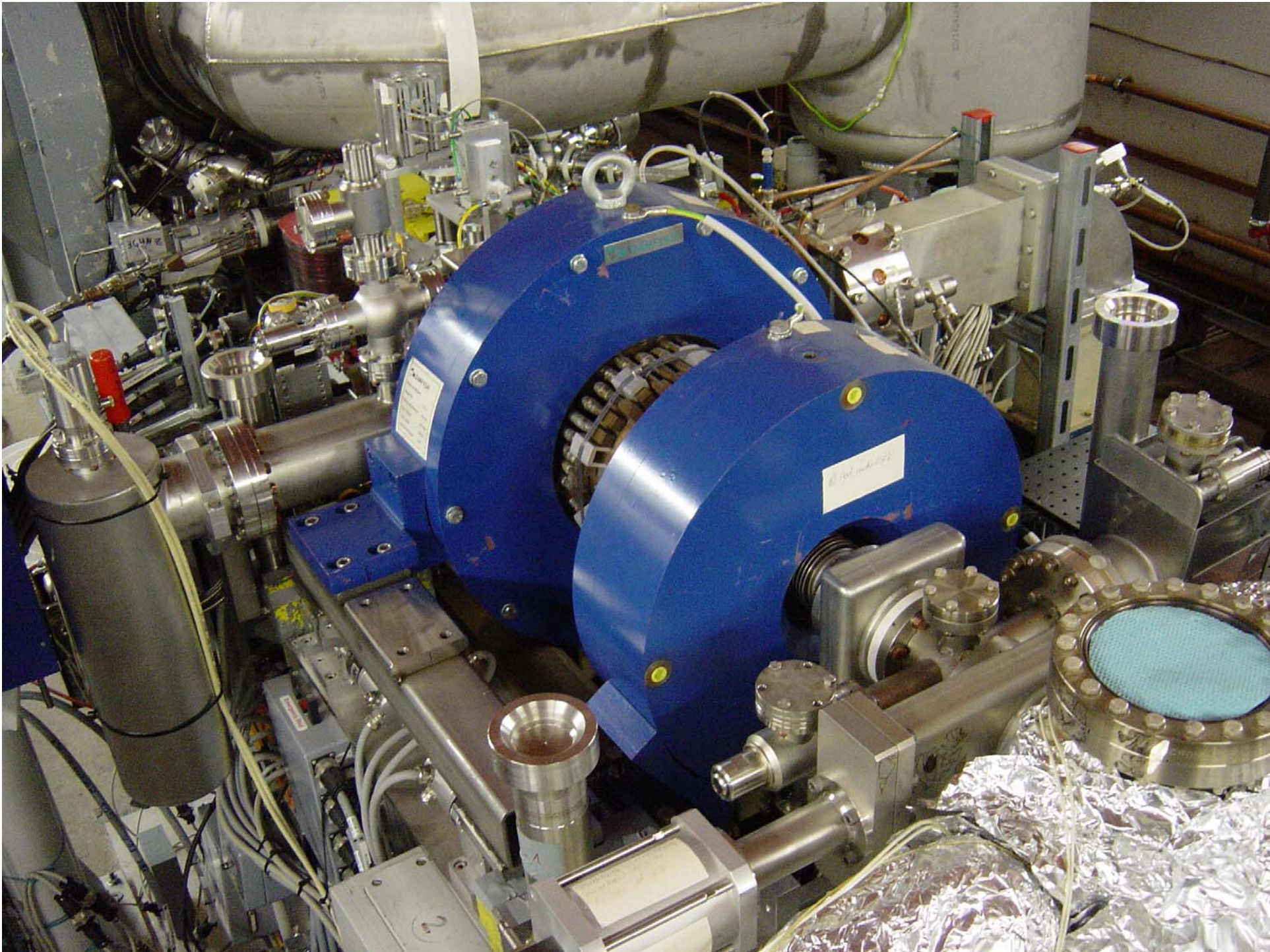
R&D instrumentation activities:

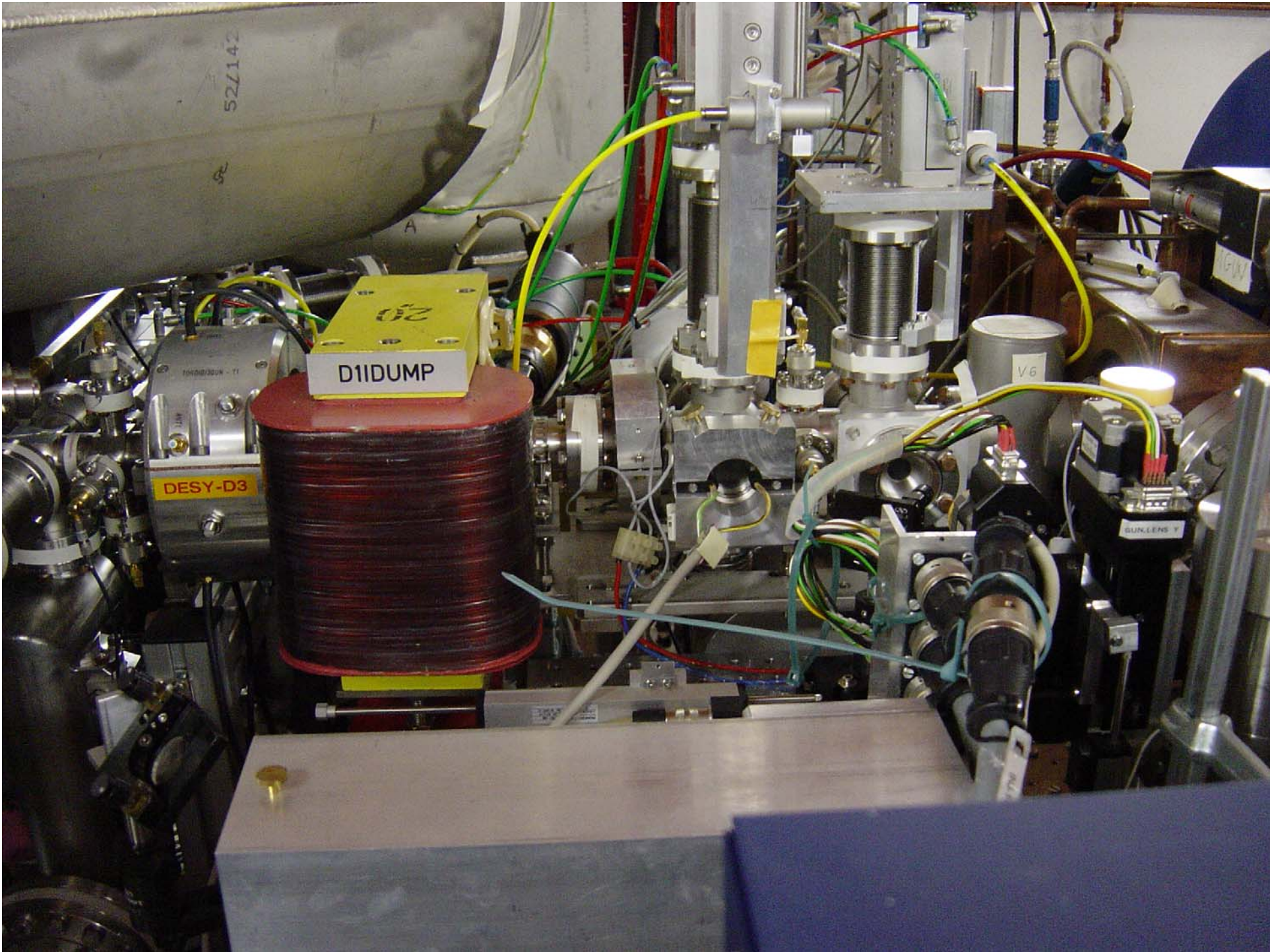
- R&D was focused on the HOM studies at the FLASH (former TESLA Test Facility TTF) at DESY/Hamburg.
- Collaboration activities with colleagues from DESY, SLAC, KEK and Fermilab (Nathan Eddy and Manfred Wendt, AD-Instrumentation).
- 8 dedicated, plus some parasitic HOM machine shifts.
- Nathan: Hardware FPGA based HOM calibration algorithm, based on the SVD orthogonalization results.
- Manfred: Some HOM hardware activities, many discussion and meetings on basic and advanced ILC beam instrumentations and possible collaborations.
- Tour through the FLASH/TTF accelerator.

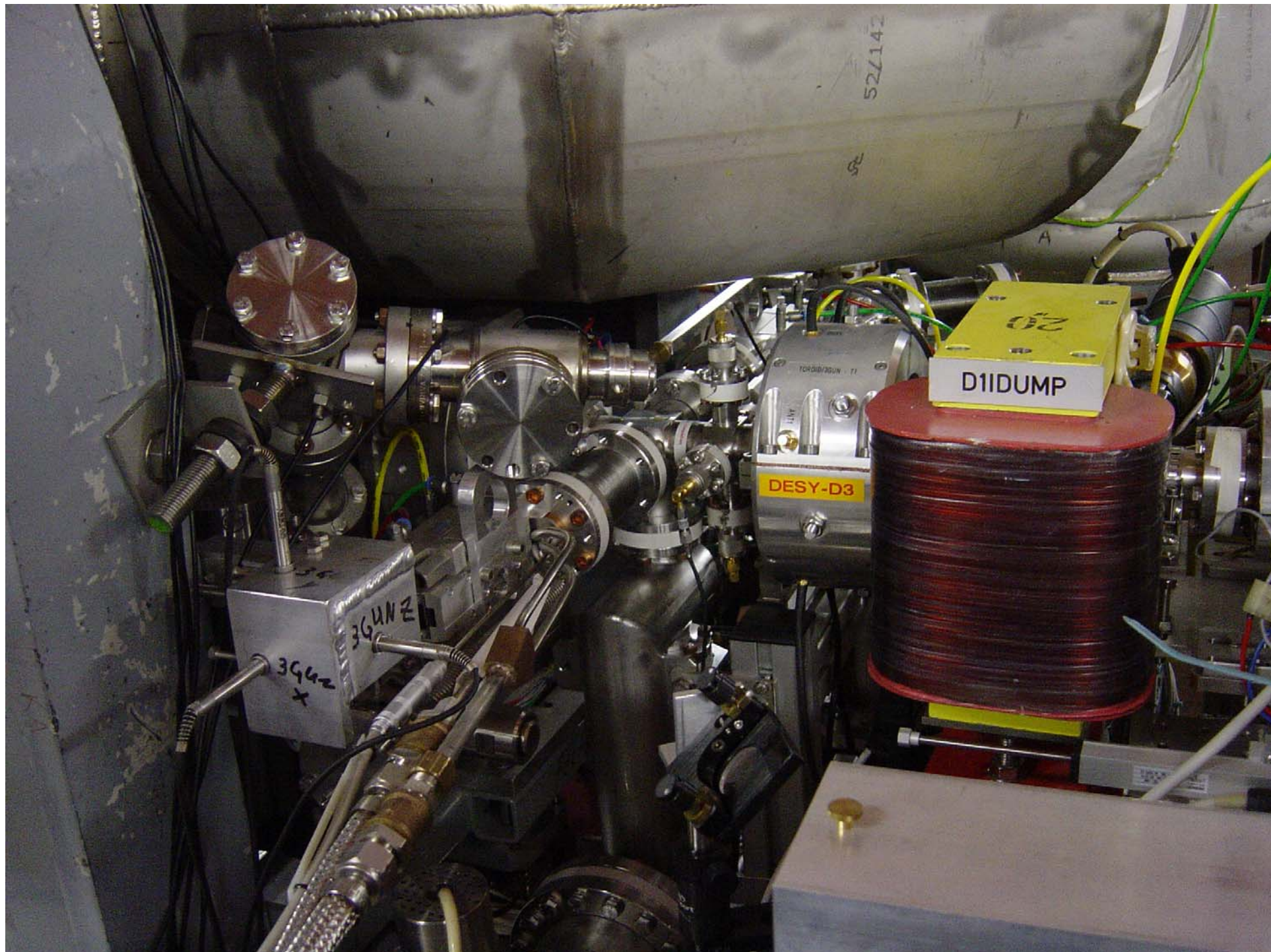


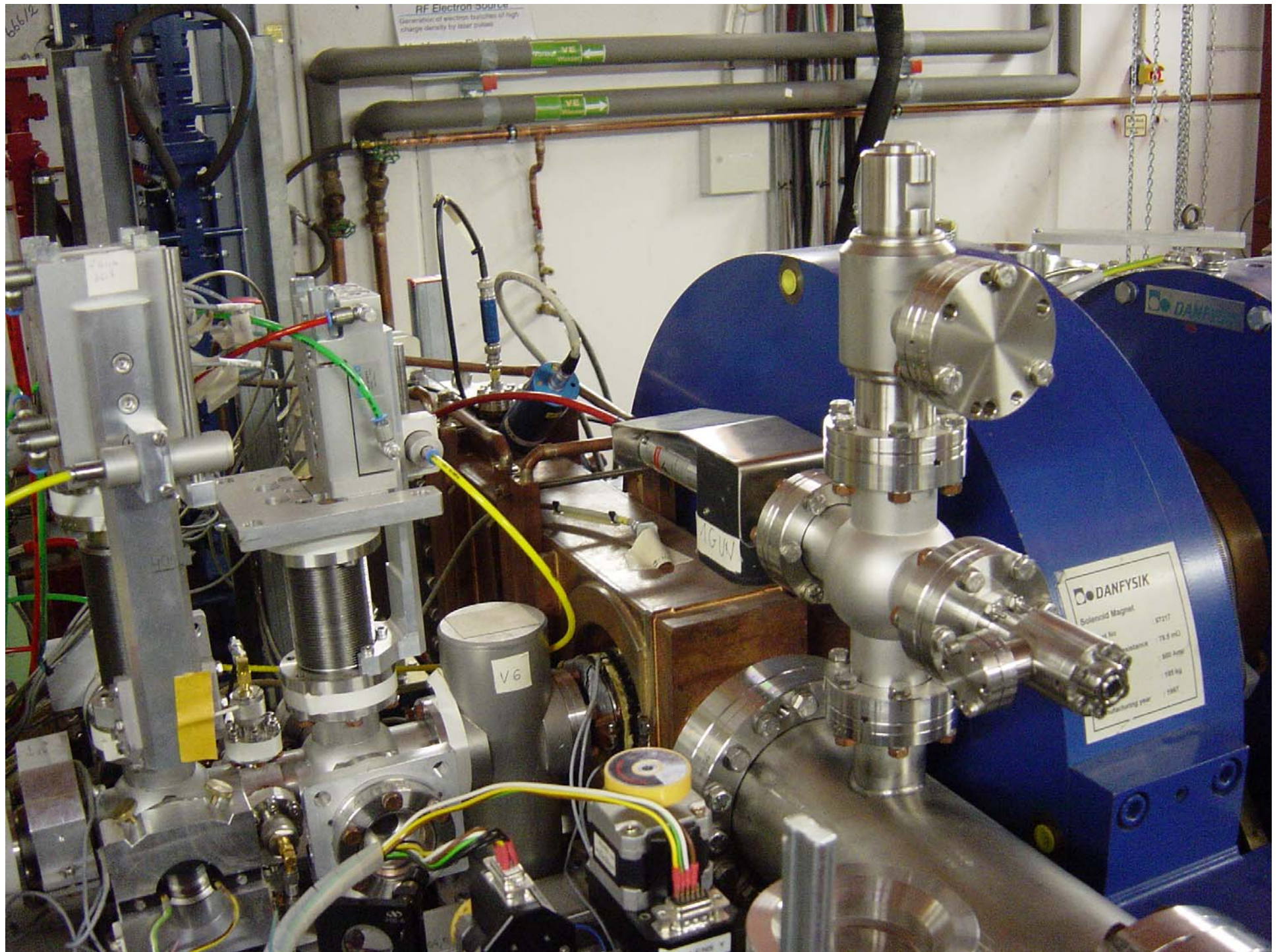


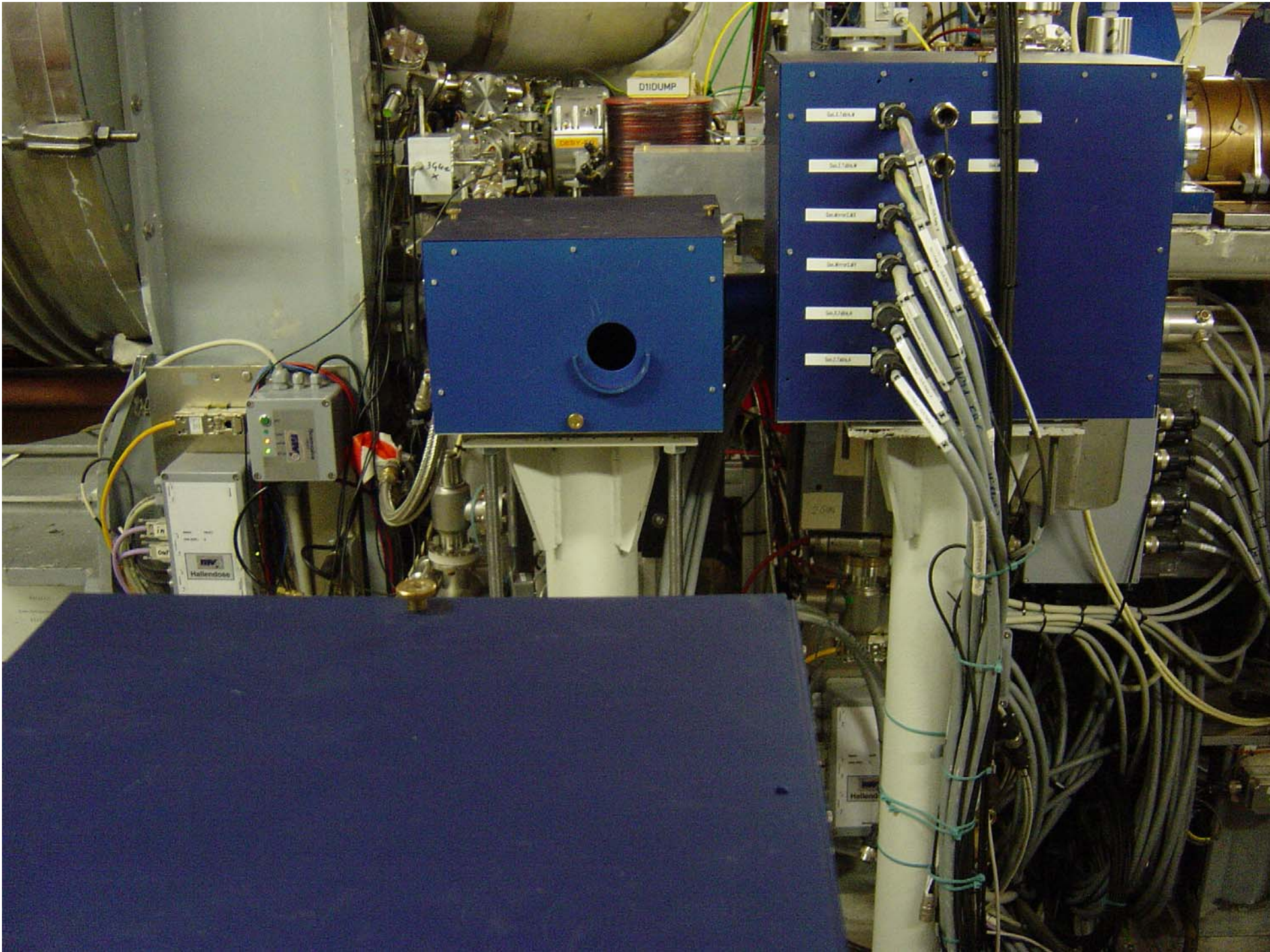


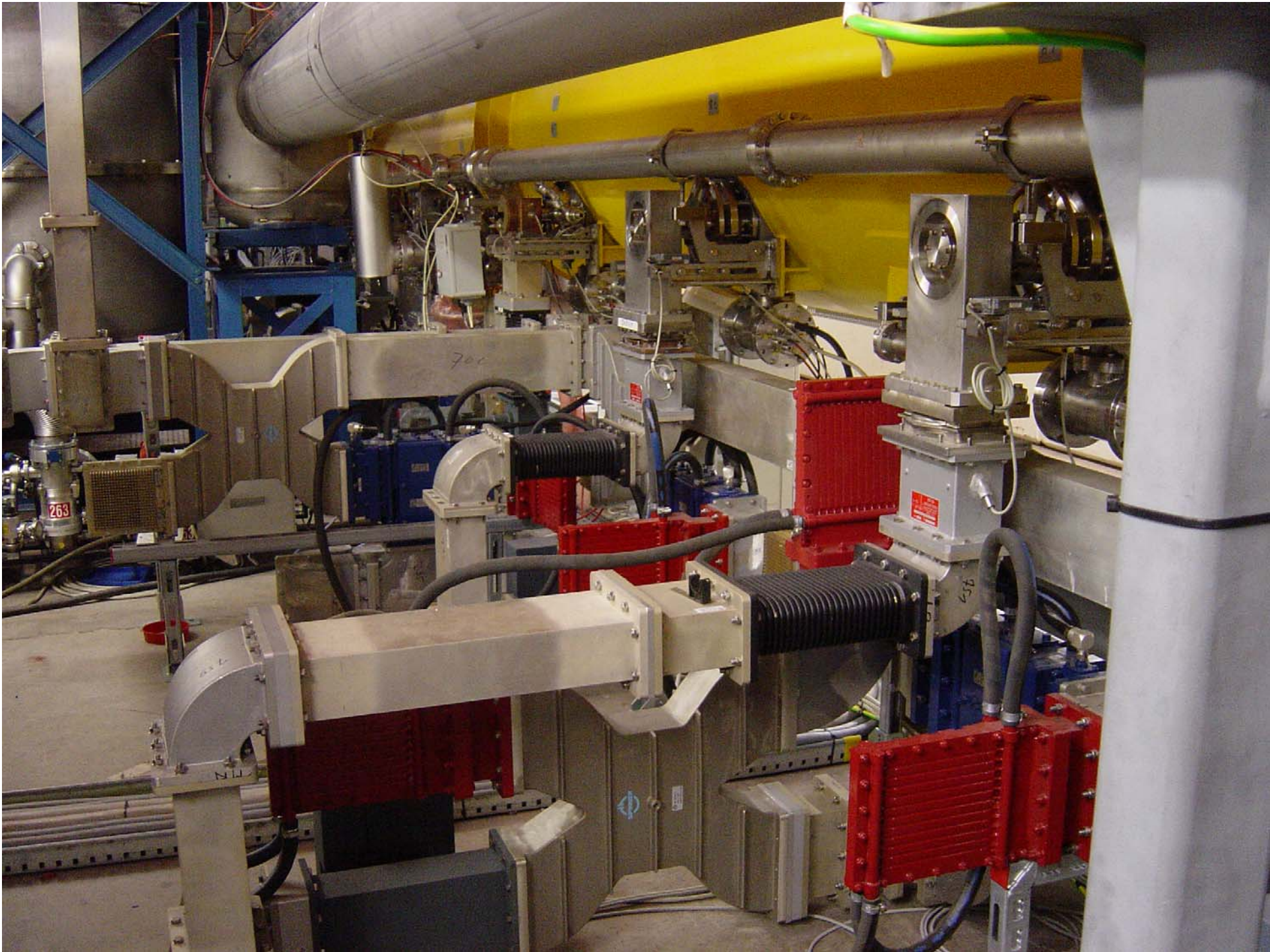


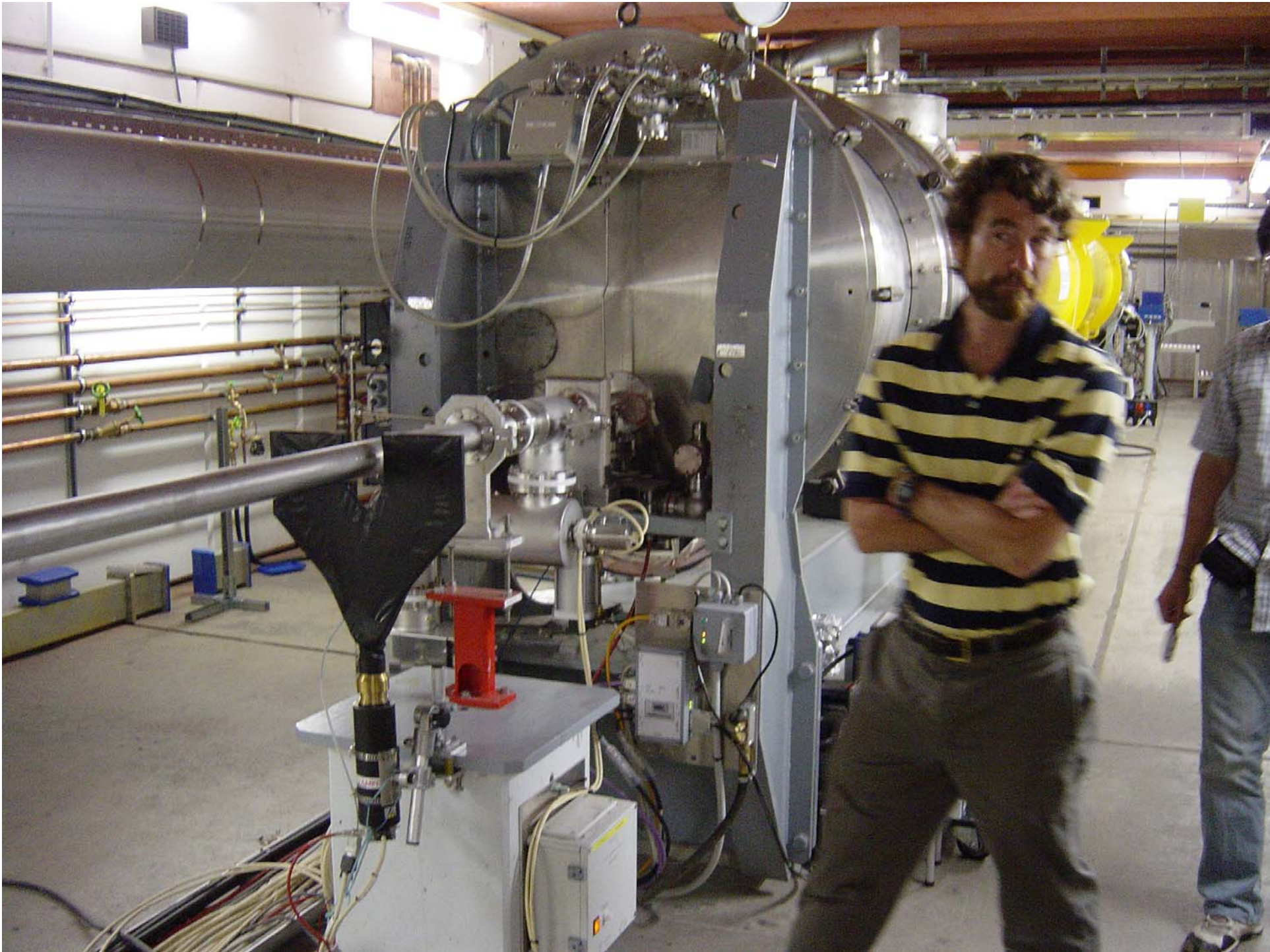


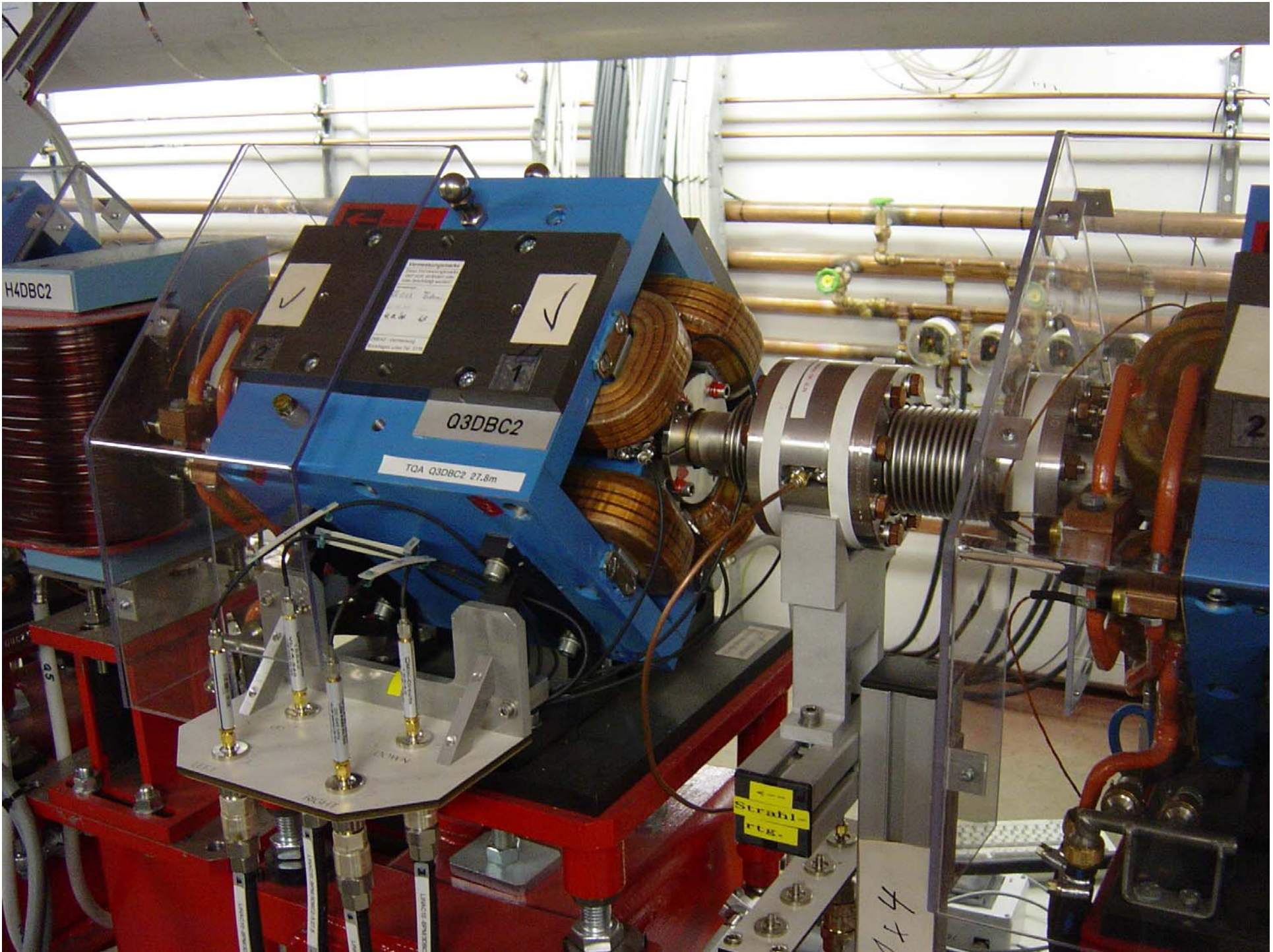


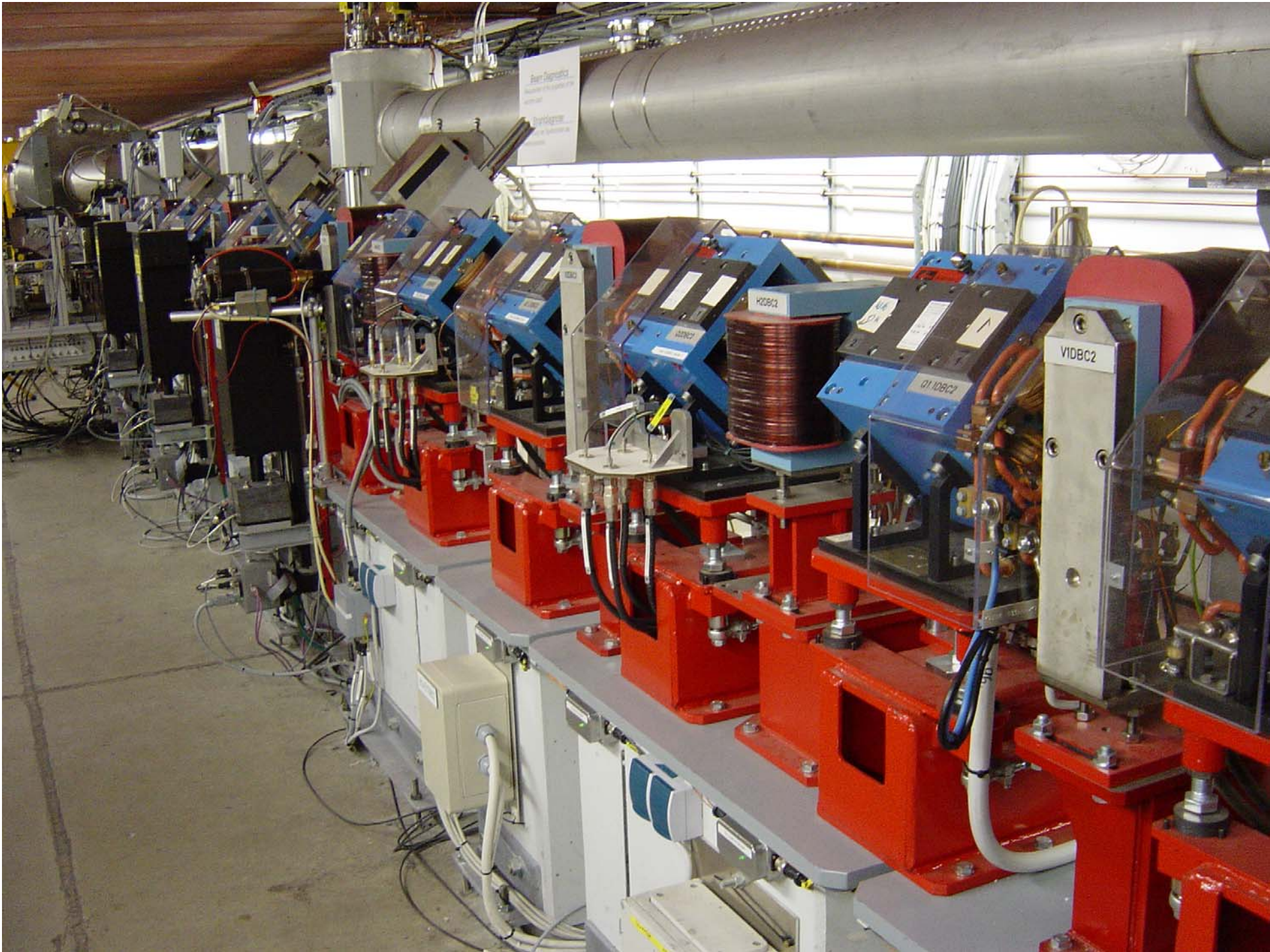


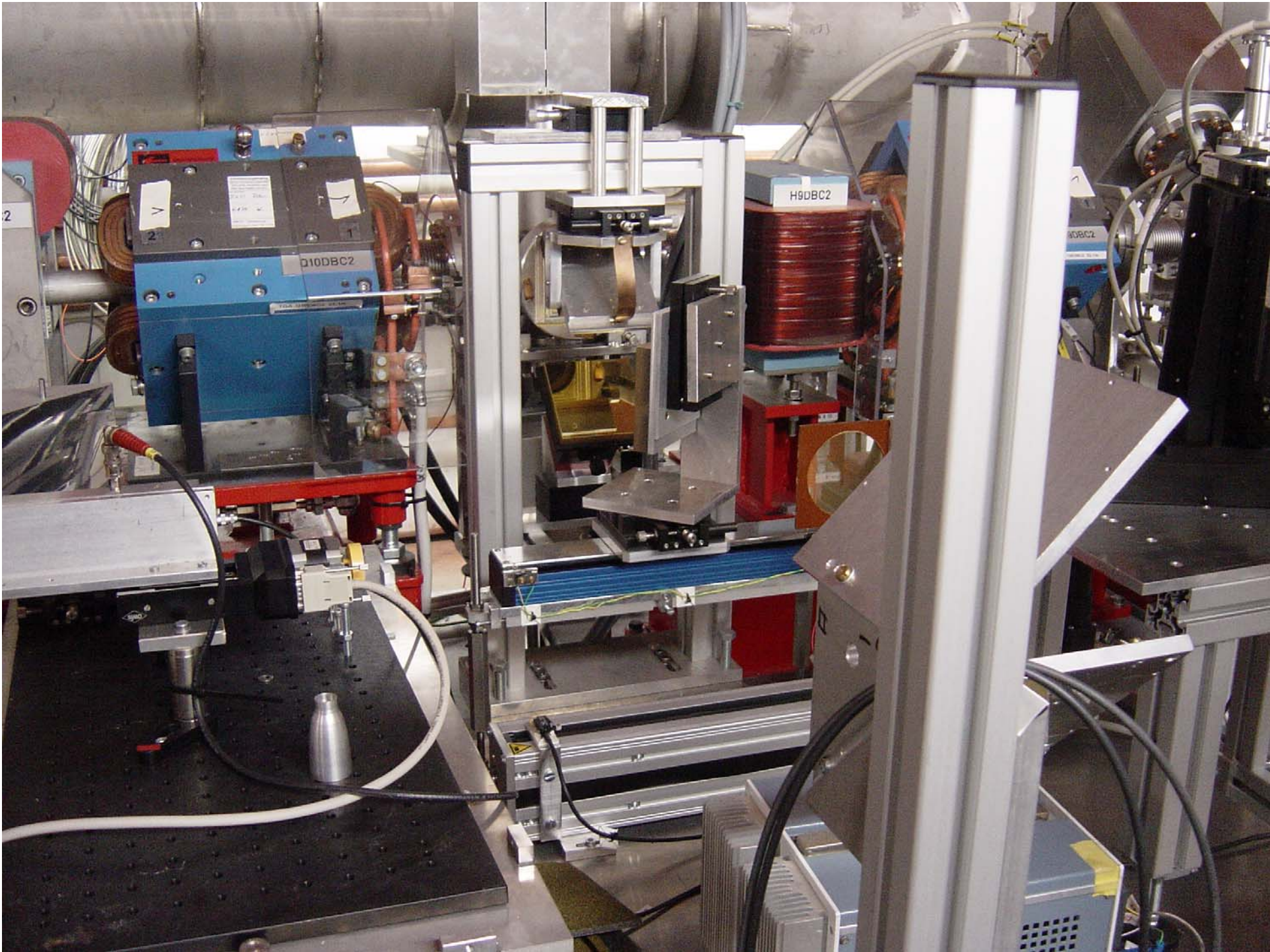


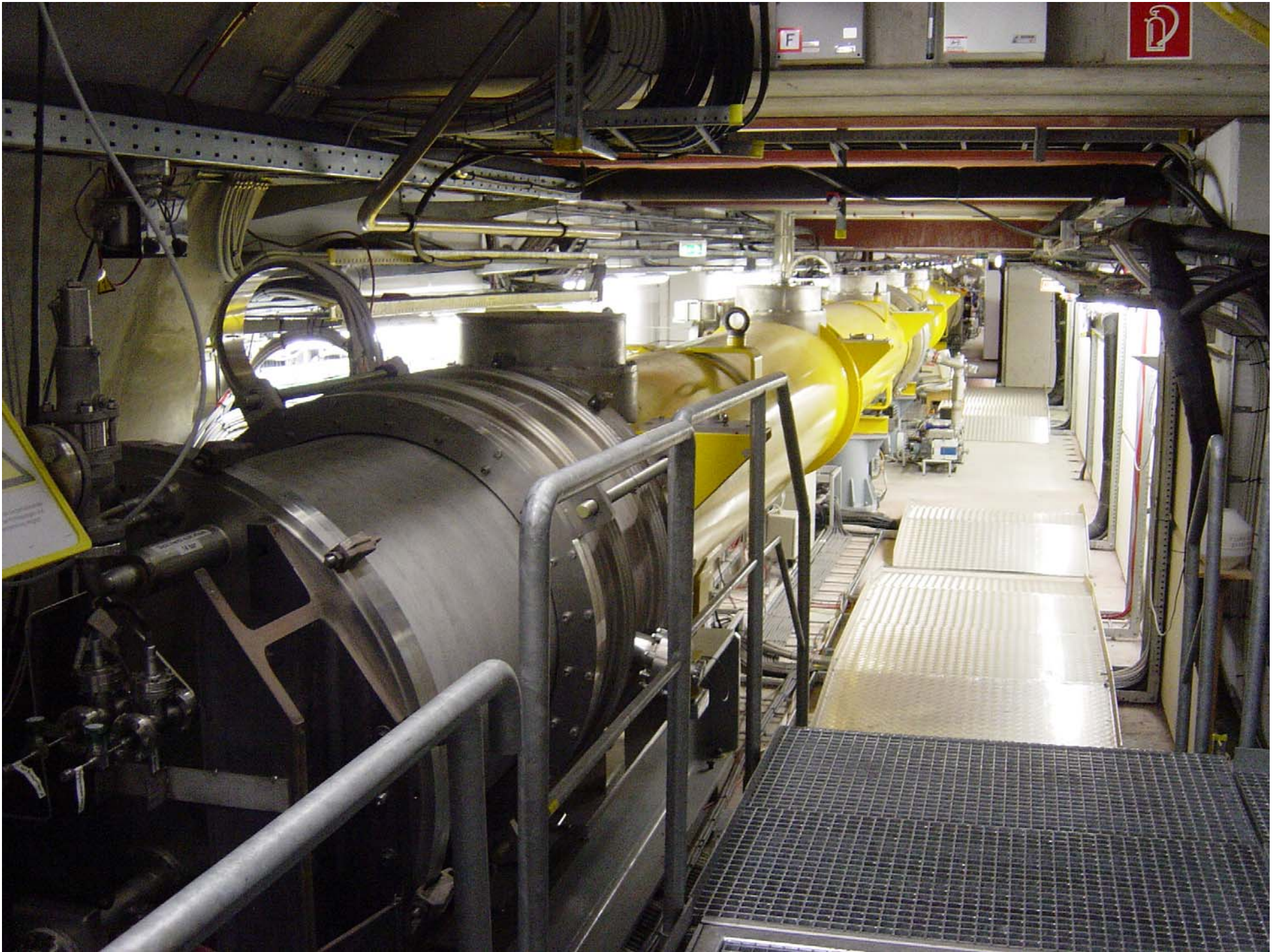


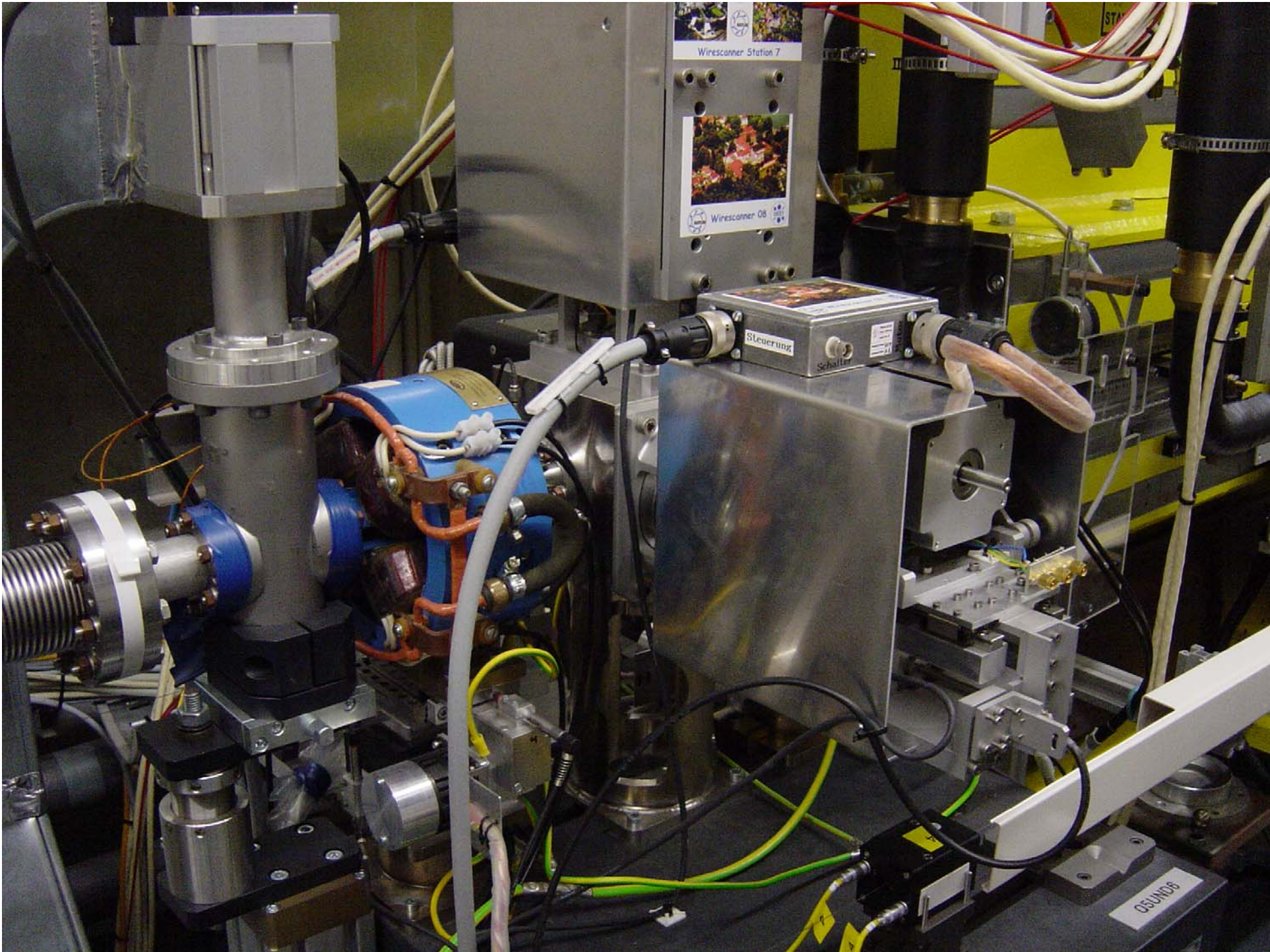




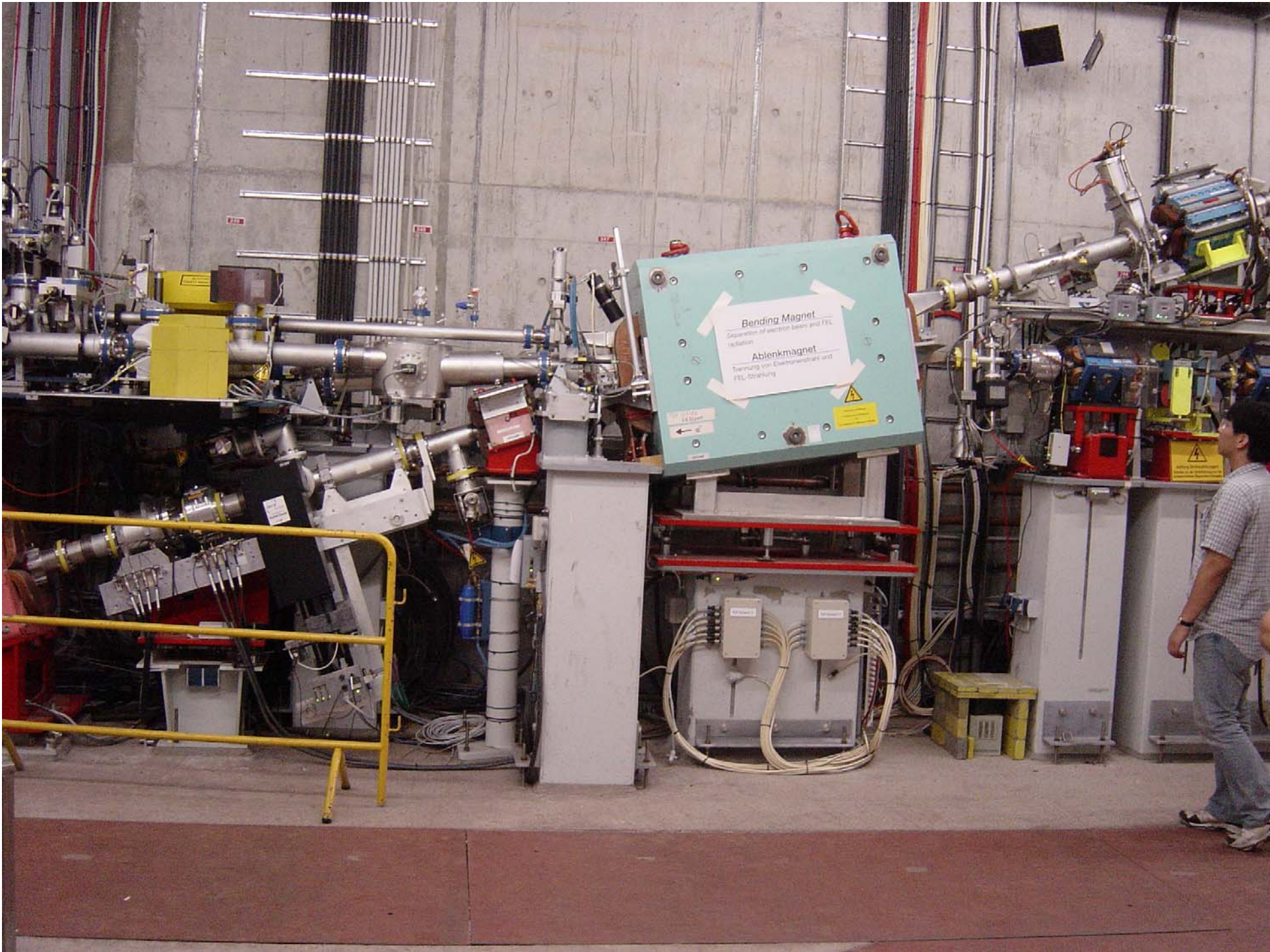


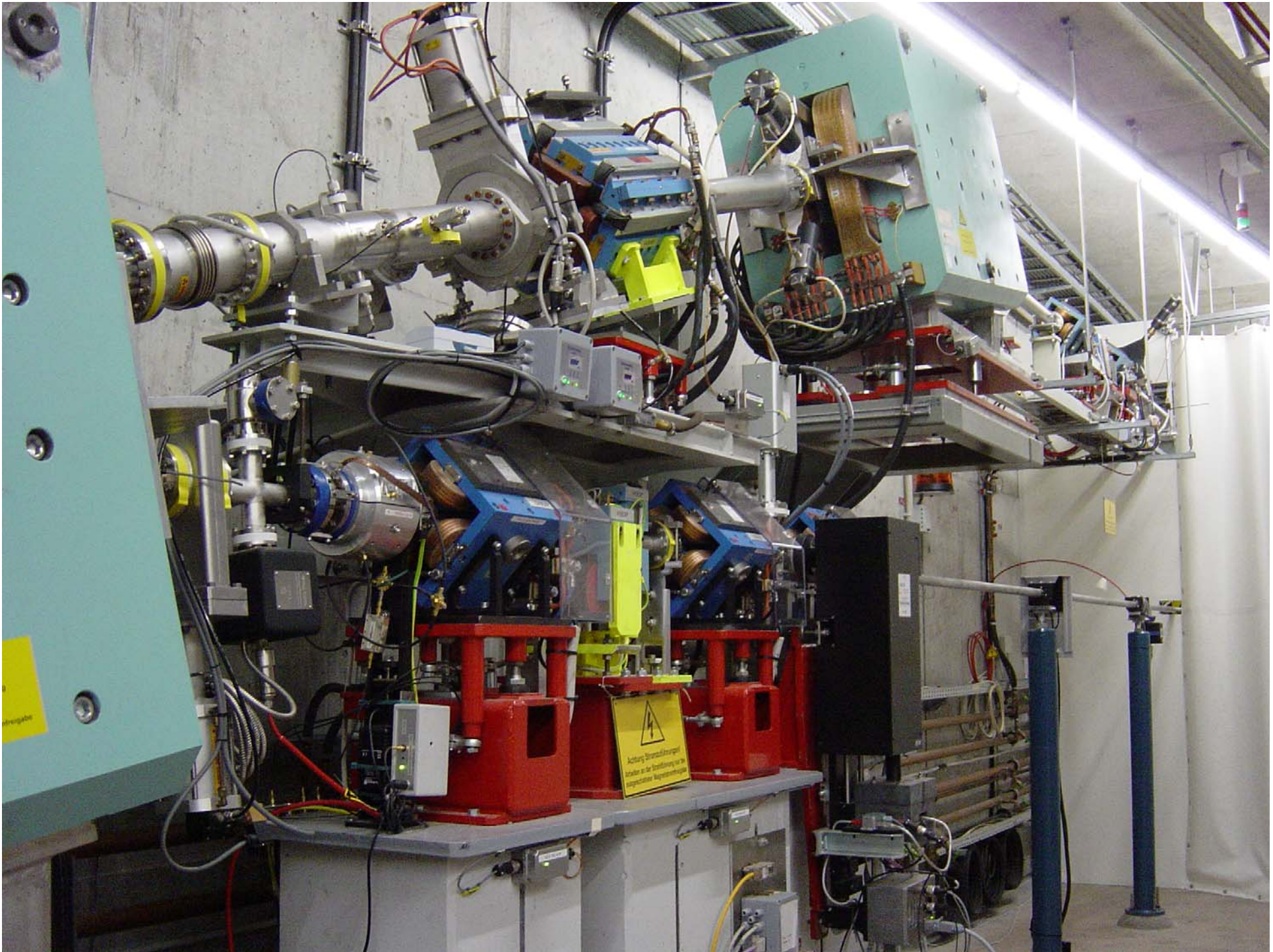


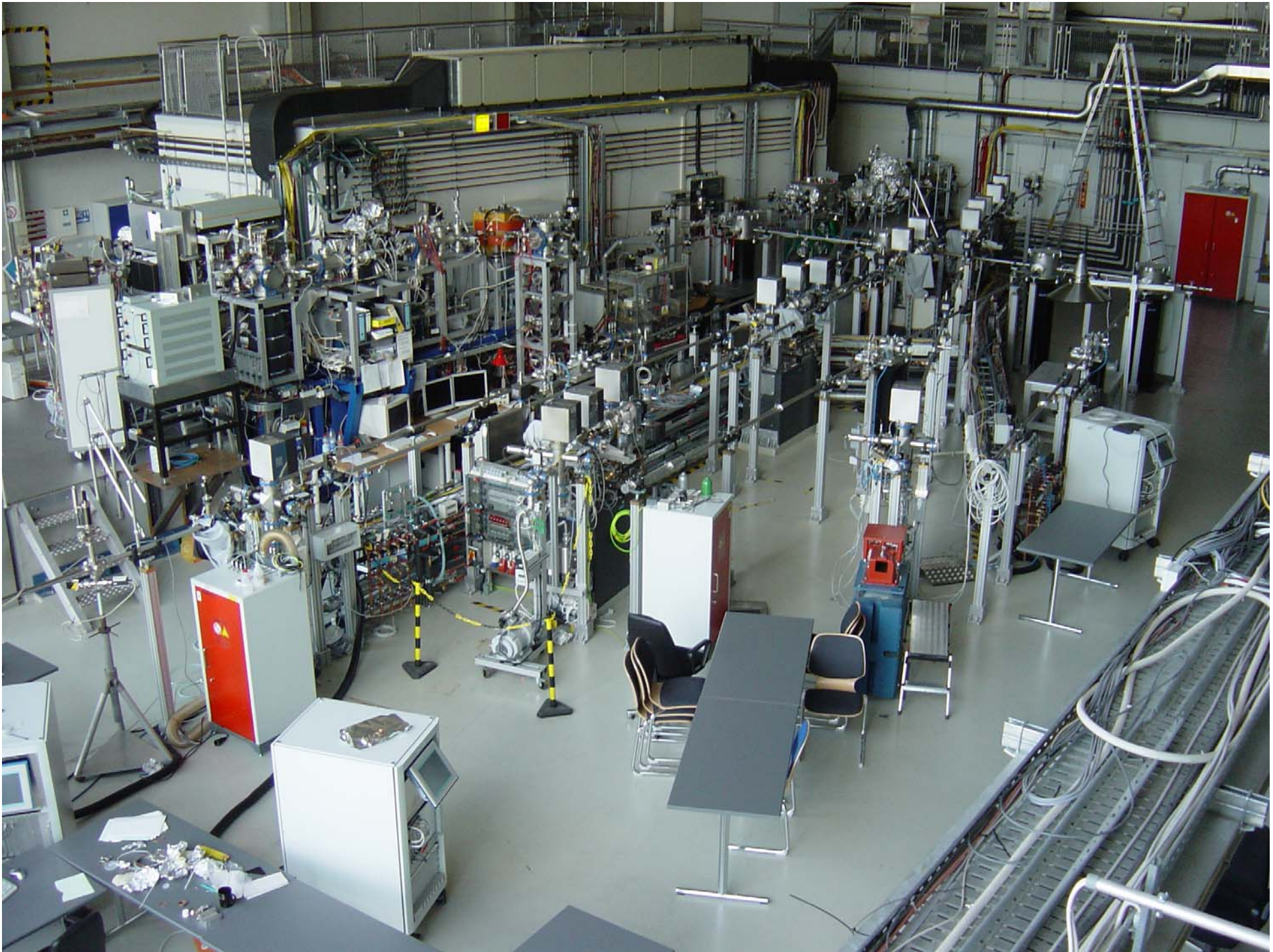


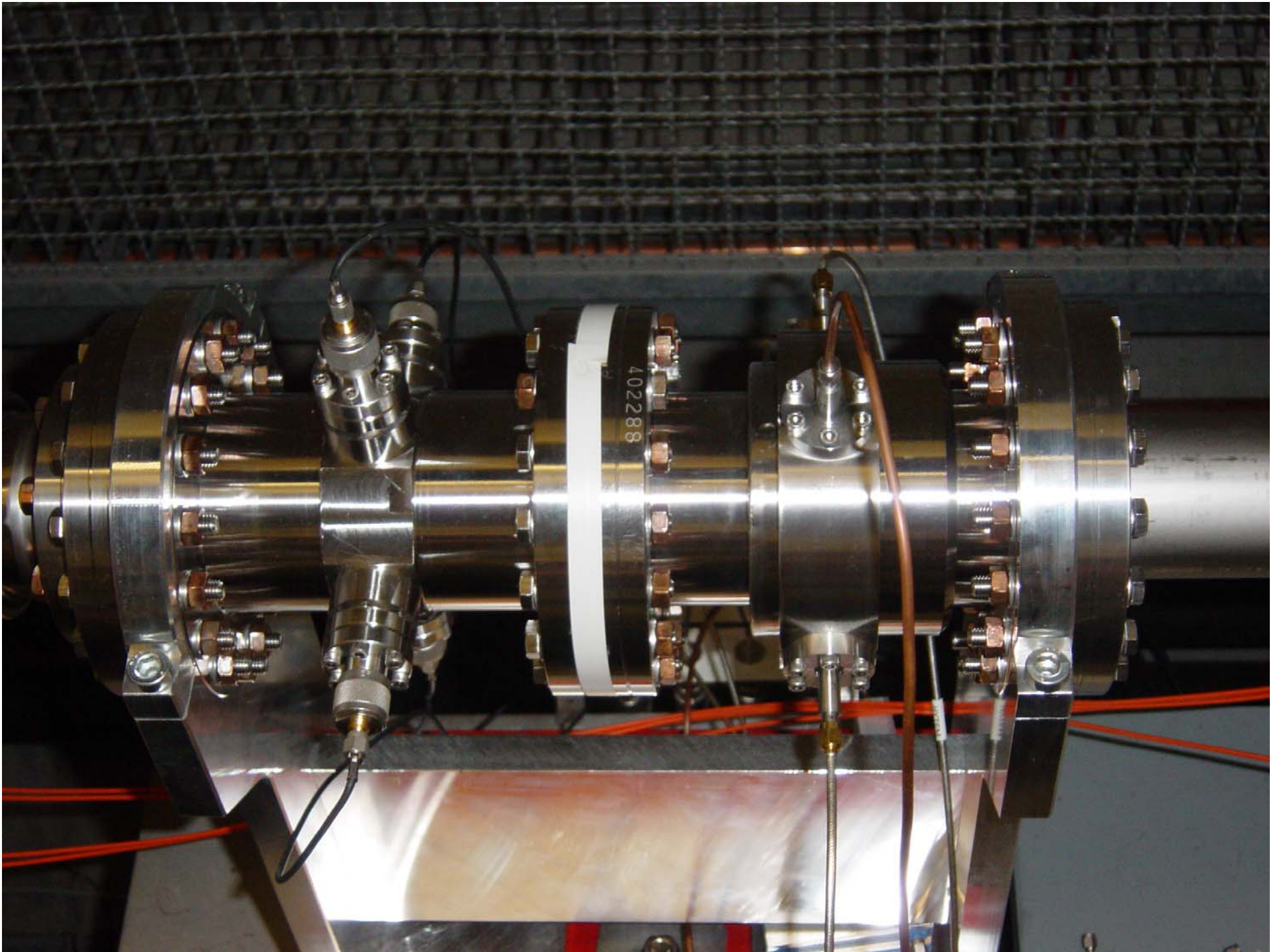












Struktur zur Messung der Länge des Elektronenpakets

