

ILD meeting

Welcome/Introduction

2015/4/23

Y. Sugimoto
@ALCW2015

Where are we?

- TDR published in 2013
- MEXT review process is on-going
 - ILC Task Force has been set up in MEXT, and Experts Committee has been formed
 - 2 sub-panels under Experts Committee: Physics WG & TDR validation WG (+ a new sub-panel on human resource?)
 - Another ~1 year to conclusion (interim report in coming summer?)
- Still long way to go after the committee report
 - International negotiation
 - Approval by Government and Congress
 - Organization of ILC Laboratory
 -
- We have >2 years before Technical Proposal process
- Site specific design of ILC has to be continued

What should we do?

- Make ILC approved
 - Strengthen physics case for ILC
 - Prepare input materials to MEXT WGs: Thank you for your cooperation (physics & survey of manpower requirement)
 - Expand supporters
 - Site specific design: design of central campus & IP campus based on detector assembly scenario → WG in ILD would be necessary
- Make ILD approved
 - Studies towards Technical Proposal
 - ILD re-optimization
 - R&D of sub-detectors (including engineering design)
 - New simulation framework
 - Preparation for technology choice in future → Survey of sub-detector status quo
 - More collaborators
 - Lack of manpower in SIT, SET, Solenoid, LHCAL

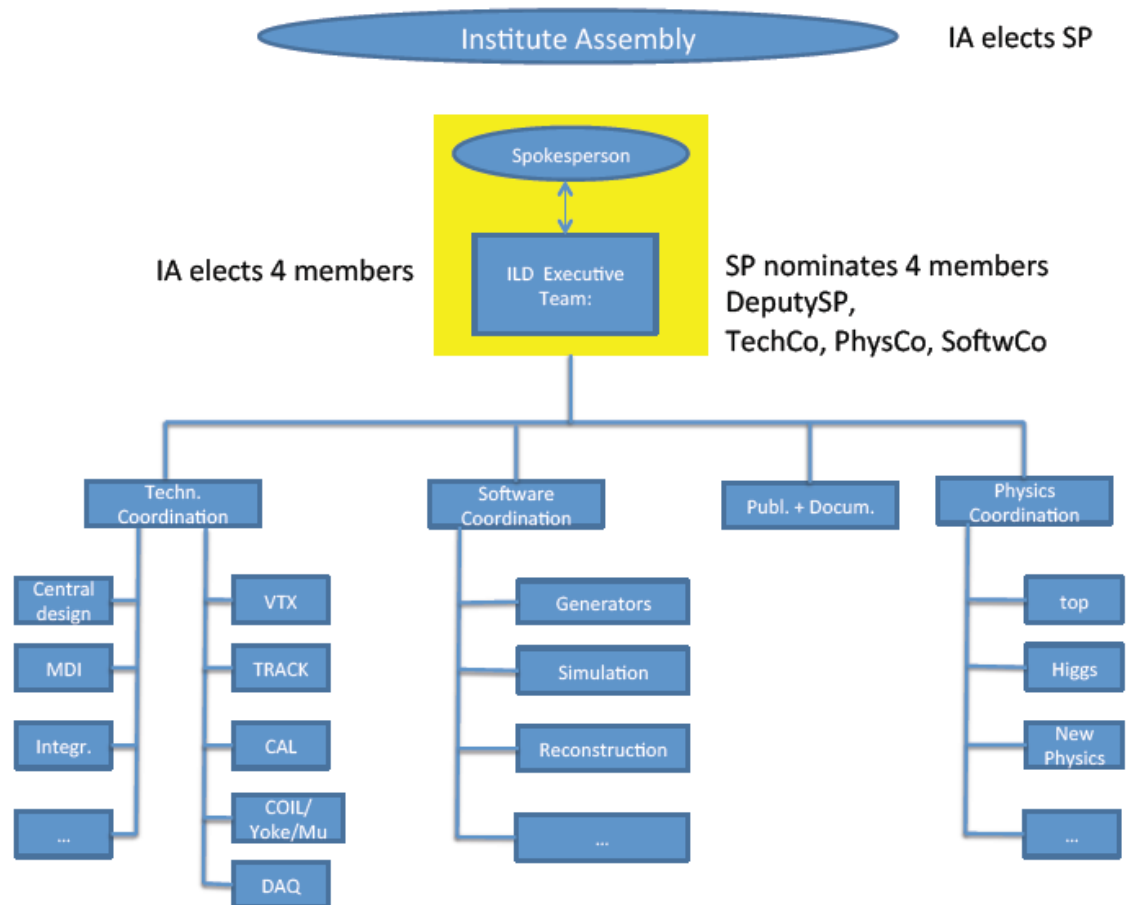
Cooperation with LCC

- Physics & Detector Executive Board
- ILC Infrastructure & Planning WG
- Physics WG
- Software & Computing WG
- Conference talks group

- MDI WG
- ILC parameter joint WG
- Change Management Board

ILD organization

- ILD Institute Assembly (IA) chaired by Jan Timmermans is functioning
- ILD rules/structure has been defined and approved
- Selection of ILD spokesperson is on going
- The new organization will be established soon



Outline of this meeting

- ILD optimization
 - Discussion of size of ILD

- ILD Institute Assembly (closed)

- Status quo of sub-detectors
 - Calorimeter statusApr. 23th
- ILD dinner

- R&D status
 - VTX
 - TPC
 - FTD
 - FCALApr. 24th

Outline of this meeting

- MDI
 - L* issue
 - Magnetic field
- Software status
- Physics analysis
 - Higgs

 - Top
 - W
 - SUSY
- Reconstruction
 - γ/π^0
 - τ
 - Tools
- Systematic uncertainty
- Generator
- ILD performance
 - How to measure?
 - Benchmark process
- Optimization: summary and discussion

Apr. 24th

ILD dinner

- Shabushabu restaurant KISOJI
 - Near Hotel Grand Shinonome
 - Map: <https://goo.gl/maps/oORVH>
- If you want cancelation or additional registration of the dinner, please tell me know as soon as possible by e-mail: yasuihiro.sugimoto@kek.jp
- Shuttle bus at 19:30 in front of Kenkyuu-Honkan
 - 2 buses with 27 capacity each
 - 59 participants
 - 4 cars (Keisuke, Akiya, Junping, Y.S.)
 - Shuttle bus to your hotels (except for Shinonome) after dinner
 - Hotel information is not available for 19 people
 - Please fill the check sheet
- If you can, please pay ¥6k beforehand in coffee break or when we are waiting for the shuttle bus

ILD dinner

	Registration	Shuttle bus for Hotels	
		Hotel name	No need (✓)
DÜRIG, Claude	Other Hotels		
HABERMEHL, Moritz			
HARTBRICH, Oskar			
JEANS, Daniel	Other Hotels		
KLUIT, Peter			
KURATA, Masakazu	Other Hotels		
NEUBÜSER, Coralie	Other Hotels		
RAVEN, Gerard			
SCHNEEKLOTH, Uwe	Other Hotels		
SUDO, Yuji	Other Hotels		
SUEHARA, Taikan			
SUMIDA, Hiroki	Other Hotels		
TAKADA, Shusuke	Other Hotels		
TOMITA, Tatsuhiko			
UOZUMI, Satoru	Other Hotels		
VAN DER KOLK, Naomi	Other Hotels		
WATSON, Nigel			
WILSON, Graham			
WINTER, Alasdair			