

Studies of $e^+e^- \rightarrow b\bar{b}$ channel at the International Linear Collider

Sviatoslav BILOKIN*

Laboratoire de l'Accélérateur Linéaire

E-mail: bilokin@lal.in2p3.fr

Roman PÖSCHL

Laboratoire de l'Accélérateur Linéaire

E-mail: poeschl@lal.in2p3.fr

François RICHARD

Laboratoire de l'Accélérateur Linéaire

E-mail: richard@lal.in2p3.fr

on behalf of the ILD concept group

The heavy quark doublet plays a central role in the quest for new physics. The complementarity between studies of electroweak top quark production and bottom quark production is therefore intuitively clear and pointed out in the literature. The tension between the LEP measurement and the Standard Model prediction of the forward-backward asymmetry A_{FB}^b is still one of the unsolved questions in the field and may be interpreted as a first manifestation of New Physics in the heavy quark sector. The process $e^+e^- \rightarrow b\bar{b}$ at the ILC offers a unique opportunity for a final word on the tension. Polarised beams allow for a large disentangling of the coupling constants or form factors that govern the $Z^0/\gamma b\bar{b}$ vertex.

EPS-HEP 2017, European Physical Society conference on High Energy Physics

5-12 July 2017

Venice, Italy

*Speaker.

1. Introduction

So far, LEP I has determined the b -quark couplings to the Z^0 boson by measuring the b partial width and the forward-backward asymmetry called A_{FB}^b . These quantities provide the most precise value of $\sin^2 \theta_W$ at LEP I. It turns out that this value is at about three standard deviation away from the very precise value from SLD using beam polarization [1]. Redoing precisely this measurement is therefore a priority for future e^+e^- colliders.

In this study, we intend to prove that the International Linear Collider (ILC) [2], with polarized beams and high luminosity, offers a unique opportunity for precise measurements well above the resonance, where both Z^0 and photon exchanges are present. This additional complexity may turn up to be of a great advantage since it allows, through $\gamma - Z^0$ interference, to be sensitive to the sign of Z^0 couplings and fully solve the LEP I puzzle in an unambiguous way. More details are given in [3] [4]. Recall that the LEP I anomaly can be interpreted up to a sign ambiguity for what concerns the right-handed coupling $Z^0 b\bar{b}$, referred hereafter as g_R^Z , which shows the largest deviation [5].

In this work, the $e^+e^- \rightarrow b\bar{b}$ channel is studied at $\sqrt{s} = 250$ GeV using full simulation of the ILC experiment. The high-granularity of the ILC subdetectors allows for an individual particle reconstruction using the Particle Flow approach. The schematic view of the ILC concept and the subdetector layout is presented in Fig. 1.

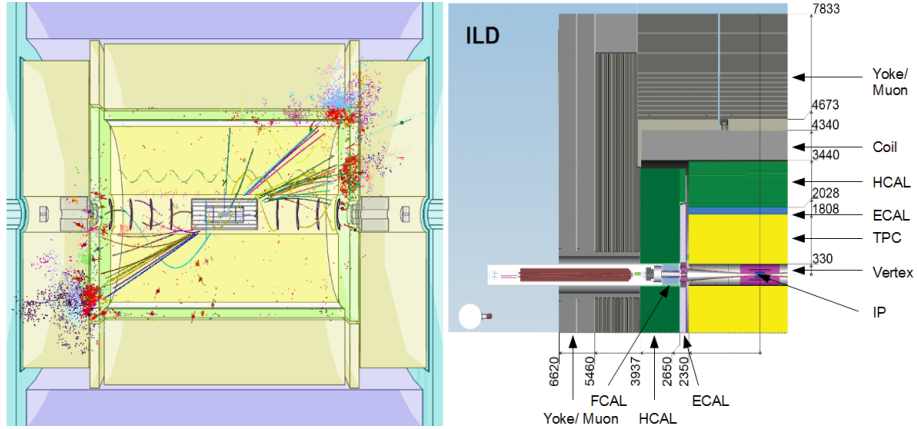
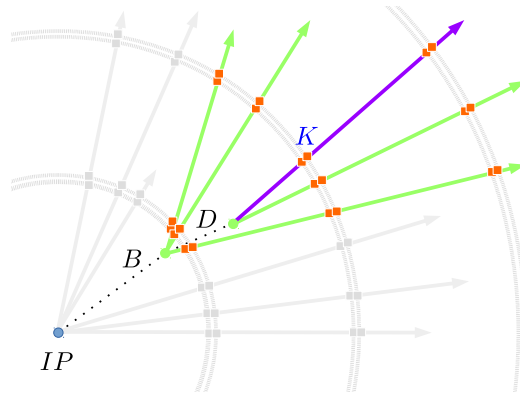


Figure 1: Event display of the $e^+e^- \rightarrow b\bar{b}$ process in a full simulation of the ILC detector (left) and schematic view of the ILC concept [2] (right).

2. b -quark charge measurement

The b -quark polar angle reconstruction requires an accurate b -quark charge measurement. The b -quark charge is identified using two basic signatures:

- **Vertex charge** is a sum of all reconstructed charges, which are associated to the b -hadron vertices.
- **Kaon charge** is a charge of kaons found in b -hadron vertices.

Figure 2: Illustration of b -hadron decays.

The schematic appearance of b -hadron decays in the ILD Vertex Detector is presented in Fig. 2.

It was found, that vertexing algorithms can miss one or more b -hadron decay particles from the reconstructed vertices. This effect decreases vertex charge purity. The developed Vertex Charge Recovery procedure enhances the vertex charge purity by adding the missing b -hadron particles back to the measured vertices using a set of reconstructed observables.

The kaon identification is possible using the TPC dE/dx information. After equalizing the dE/dx in angular spectrum, the kaons from b -hadron vertices can be identified with 97% purity and 87% efficiency.

The plots of the vertex charge purity and the dE/dx as function of particle momentum for different hadrons are shown in Fig. 3.

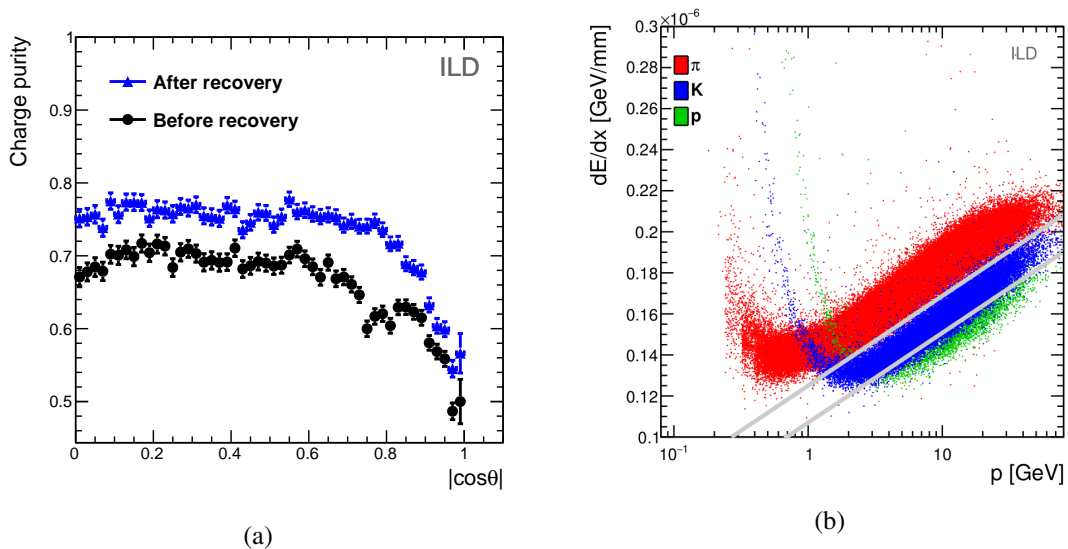


Figure 3: Vertex charge purity as function of $|\cos \theta|$ (left) and energy deposition per unit of length dE/dx as function of particle momentum p (right).

3. b -quark polar angle spectrum

The reconstructed b -quark polar angle distributions at $\sqrt{s} = 250$ GeV using a combination of kaon and vertex charge signatures are demonstrated in Fig. 4. The integrated luminosity $\mathcal{L}_1 = 250 \text{ fb}^{-1}$ is assumed for each beam polarization.

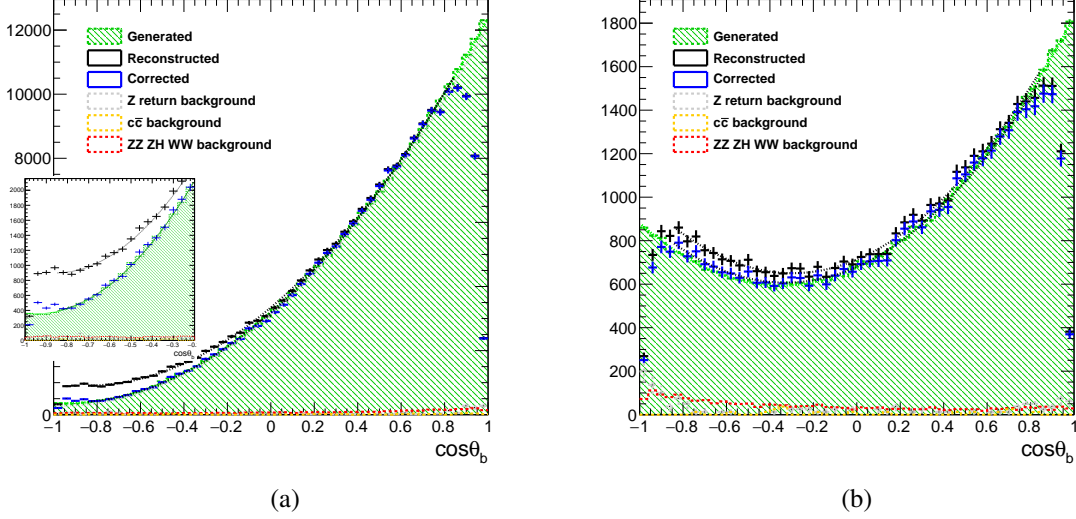


Figure 4: Generated b -quark polar angle distribution compared to the final reconstructed b -quarks polar angle in left-handed case (a) and right-handed case (b) with overlaid background processes.

The kaon and vertex charge purity is defined using the measured events with misreconstructed charges. Using the measured purities, the reconstructed spectrum is corrected using a data-driven procedure. The corrected distributions are fitted by a general cross section function, defined as $S(1 + \cos^2 \theta) + A \cos \theta$. The extracted precision on the S and A parameters is rescaled to the realistic polarization $e_L^-, e_R^+ = \pm 0.8, \mp 0.3$ and the luminosity sharing of the ILC physics program. As one can see from Fig. 4, the contribution of the diboson background processes is small.

4. Interpretation

The relative precisions on the $Z^0 b\bar{b}$ couplings, g_L^Z and g_R^Z , for the LEP I measurements and for the expected ILC performance are shown in Fig. 5. The ILC precision on the g_R^Z coupling is enough to fully confirm or discard the New Physics influence on the b -quark electroweak couplings.

Conclusions

- The developed procedure of the b -quark charge reconstruction allows for measuring the b -quark polar angle. The residual impurity is corrected by a data-driven procedure;
- The b -quark polar angle fit allows for an independent determination of four electroweak couplings of the b -quark. The fit can be extended to include also a term proportional to $\sin^2 \theta$, giving access to an independent determination of the tensorial couplings;

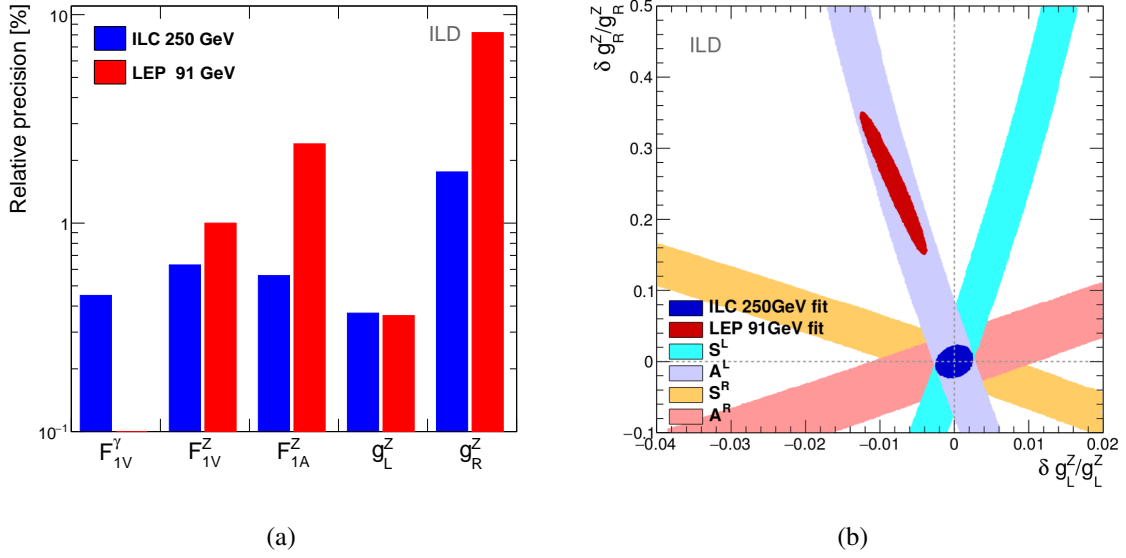


Figure 5: Comparison of the LEP measurements to the expected precision at the ILC. The results of the ILC assume an integrated luminosity of $\mathcal{L}_\mathcal{I} = 500 \text{ fb}^{-1}$ shared between beam polarizations at $\sqrt{s} = 250 \text{ GeV}$.

- The relative precision on the right-handed coupling $dg_R^Z/g_R^Z \approx 2\%$ at the ILC is sufficient to confirm at $> 5\sigma$ or to discard the LEP I effect, which is at the 25% level;
- A reach of new particle mass scale $\Lambda \approx 10 \text{ TeV}$ is achievable for indirect New Physics searches using Effective Field theory approach.

Forthcoming Research

The b -quark charge technique was originally developed for the t -quark polar angle measurement in the semileptonic decay channel and it can be applied to the fully hadronic $t\bar{t}$ decays. The kaon charge method can be extended on the c -quark polar angle analysis, where one can improve the LEP I results on the c -quark couplings precision. Hence, at the ILC one can measure the top, bottom and charm quark electroweak couplings with an excellent sensitivity to New Physics effects.

Acknowledgements

These studies are done using the full ILD simulation and we acknowledge the work of the ILD software and simulation groups.

References

- [1] M. Baak, J. Cúth, J. Haller, A. Hoecker, R. Kogler, K. Mönig, M. Schott, and J. Stelzer. The global electroweak fit at NNLO and prospects for the LHC and ILC. *Eur. Phys. J.*, C74:3046, 2014.

- [2] Ties Behnke, James E. Brau, Brian Foster, Juan Fuster, Mike Harrison, James McEwan Paterson, Michael Peskin, Marcel Stanitzki, Nicholas Walker, and Hitoshi Yamamoto. The International Linear Collider Technical Design Report - Volume 1: Executive Summary. 2013.
- [3] Bilokin S. Hadronic showers in Highly Granular Silicon-Tungsten Electromagnetic Calorimeter and Top and Bottom Production at the International Linear Collider, Université Paris Sud - Paris XI.
- [4] S. Bilokin, R. Pöschl, and F. Richard. Measurement of b quark EW couplings at ILC, arXiv:1709.04289. 2017.
- [5] Abdelhak Djouadi, Gregory Moreau, and Francois Richard. Resolving the A_{FB}^b puzzle in an extra dimensional model with an extended gauge structure. *Nucl. Phys.*, B773:43–64, 2007.