

LCTPC phone meeting, Nov. 16,2017

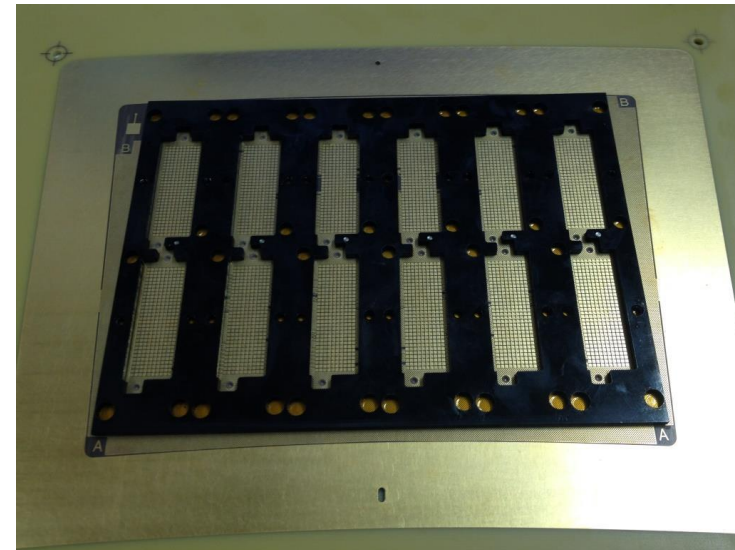
News from Saclay

P. Colas, D. Attié, S. Ganjour

Encapsulated resistive foil Micromegas with reverse polarization

Reserved a test beam period at DESY to test 3 to 4 modules with several improvements:

- Better pad connections (threaded stiffener glued on PCB, under mechanical test, electronic test in 1 or 2 weeks)
- Grounded mesh, anode at +400 V (should give less noise and less distortions)
- DLC just delivered (2 Mohm/sq)
- same test going on for T2K upgrade with cosmic-rays



dE/dx analysis

- With MM data from 2015 by a Russian student (from T2K)
- Will combine 170 padrows to estimate resolution with a track length of 1.2 m

TPC interface document

P. Colas, A. Sugiyama

Integration Task Force

- An integration Task Force is set up in ILD
- Finalize membership early December
(one engineer + one or two physicists per subdetector)
- Face-to-face meeting at DESY or LAL early 2018 (2nd half of January)
- Paul and Serguei @KEK for 2 weeks, with Keisuke, Yumi, Aiko, Tomohisa, Akira,....
- Discussed with Sugimoto the space and location issues for the ancillaries

Locations

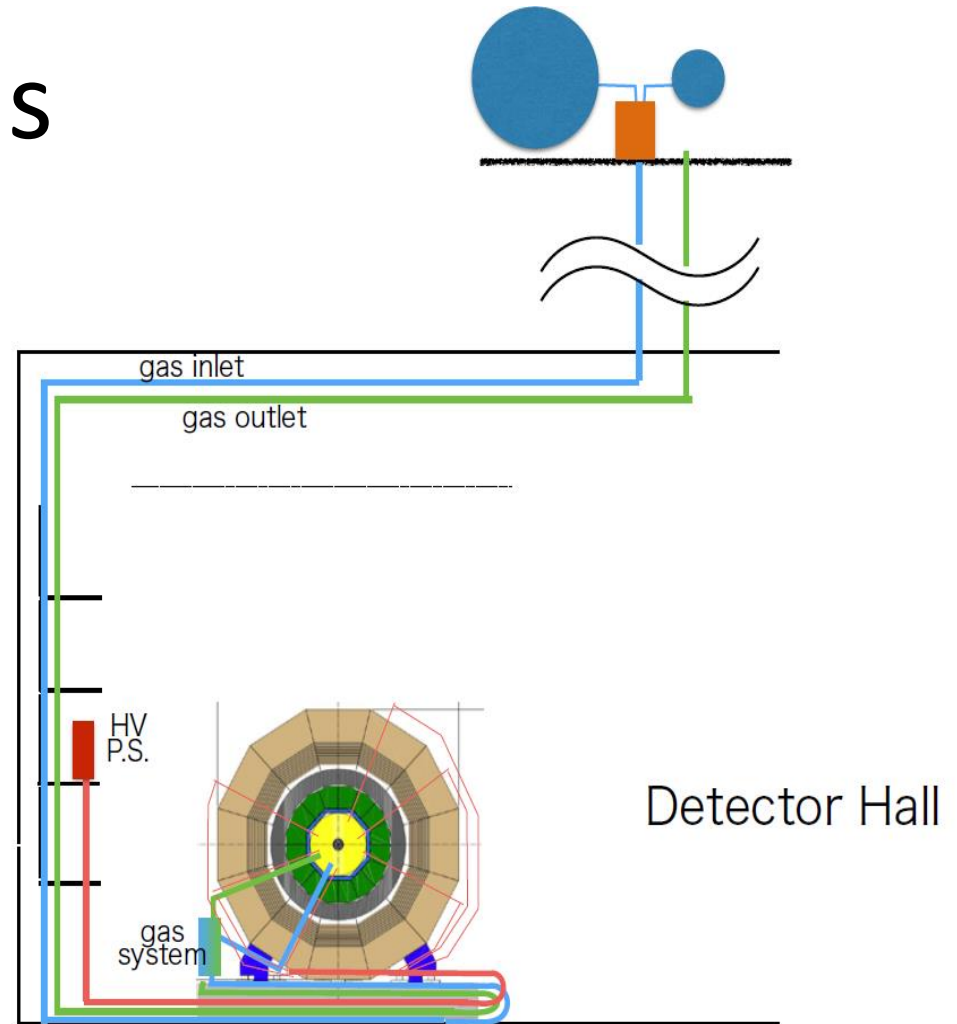
- **platform** (no vibration, space reduced),
- **cavern**,
- **gallery** (facilitated accessibility for maintenance,
- **surface** (less space limitation nor safety constraints but long distance to the detector)

LV has to be close to the detector: platform

Gas analyse system : same

HV : Cavern

Backend and DAQ computers : gallery



SURFACE

Gas slow control computer

UNDERGROUND

Repeated Side A and Side B

EXTERNAL DEVICES

INTERFACE REGION

ON-DETECTOR DEVICES

3V/8A power supply
for ASICs per module

0.4 to few kV power
Supply for gas
amplification

Few V power supply
For gating

DAQ computer
(farm?)
(data and DACs, clock)

6 patch panels

Optical fibre

Module
(x240)
In 6 sectors

Or supermodule (x80)

Europe-Japan matters

- E-Jade now running well, with WP3.3 for ILC-related physics and detector R&D.
- TPC: Paul and Serguei passing the 1st month of secondments
- Central integration : Roman and Karsten are in and travel often
- Next events:
 - ILD meeting in Kitakami : Feb. 20 to 22
 - FJPPL à Nara : May 9 to 11
 - Asian LCWS in Kyushu : May 28 to June 1.