

Discussion on Geometries

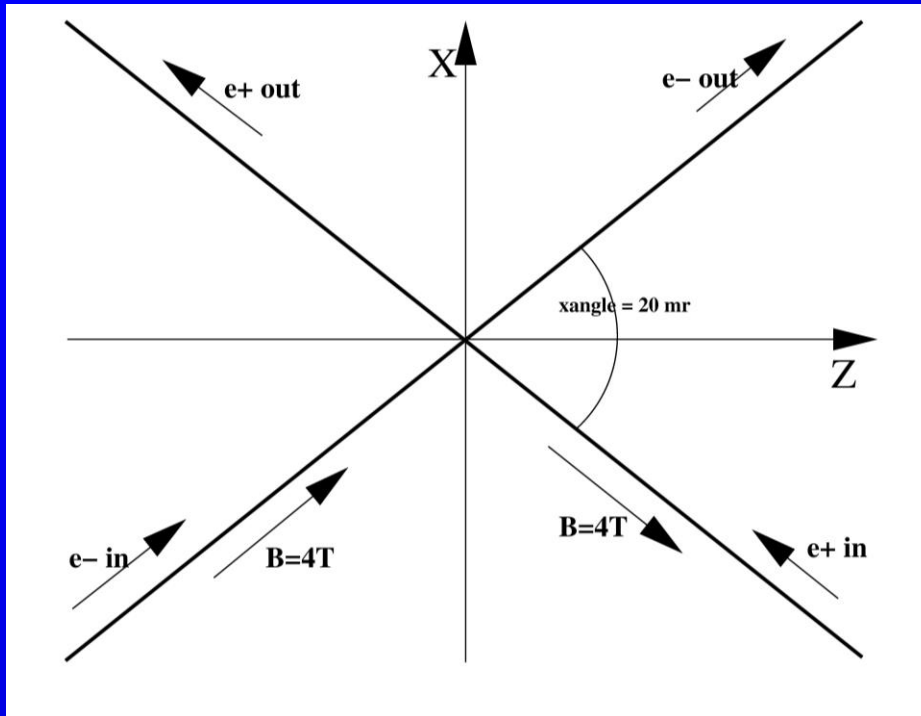


FCAL Collaboration Workshop

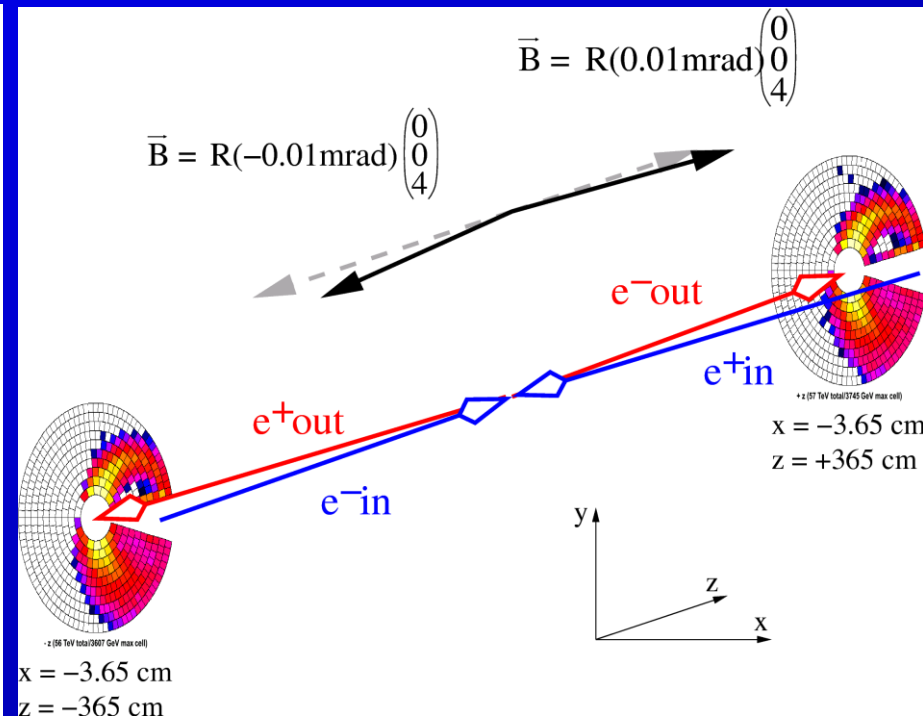
TAU, September 18-19, 2005

Coordinate systems

Coord.-System1:
Geant3 like (Brahms):



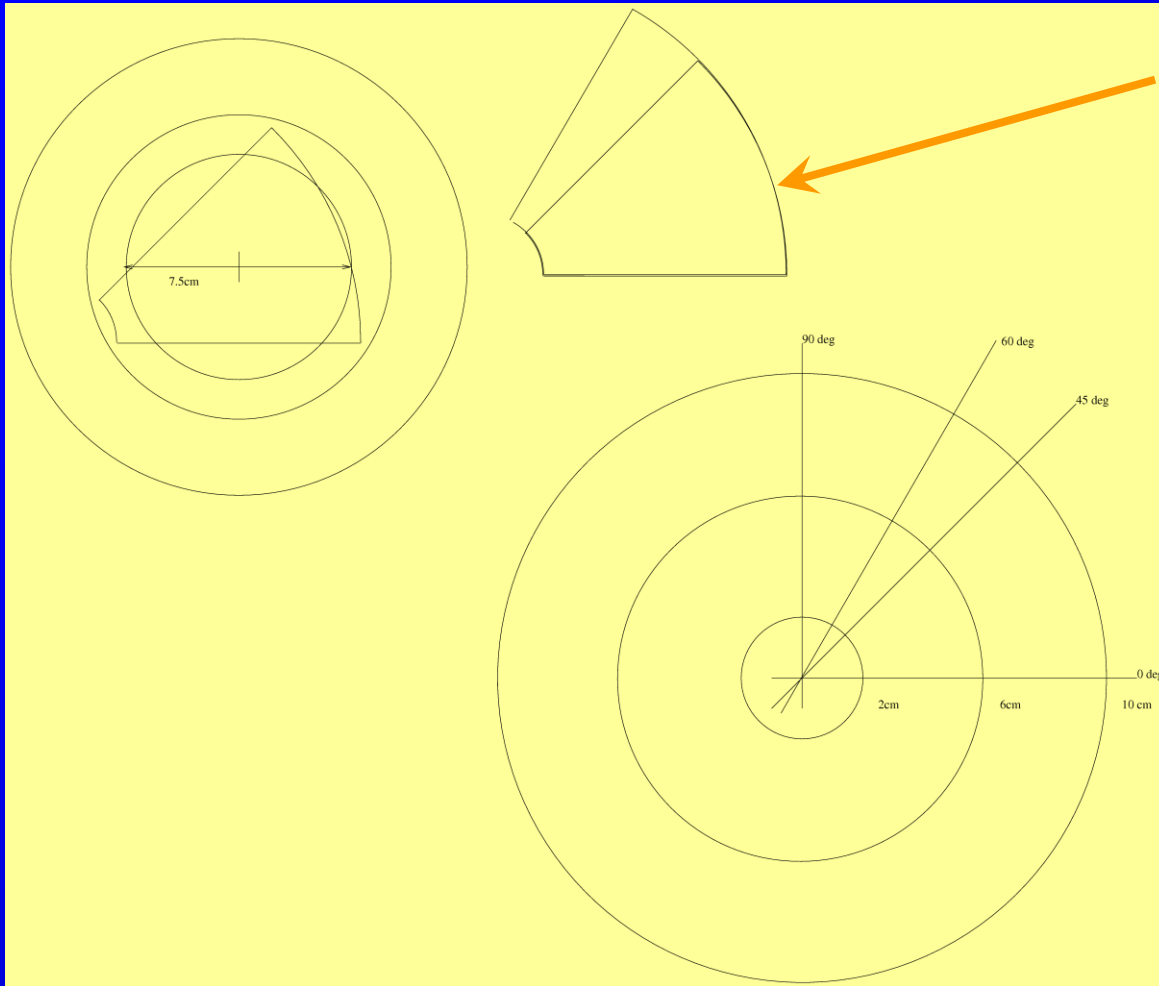
Coord.-System 2:
Geant4 like (Mokka):



Positions/Geometries

- Center Lumi- and BeamCal on outgoing beam.
 - LumiCal: $\pm 3.05\text{cm}$
 - BeamCal: $\pm 3.65\text{cm}$ ($z=370$ is also used)
- Angular Coverage:
 - LumiCal: 8(13) to 28cm
26(43) to 92 mrad
 - BeamCal: 1.5(2) to 10(16)cm
4(5) to 28(44)
- Option: misplace BeamCal and keep aperture small...how to prevent dead area?

BeamCal Segmentation



45/60° calo segment (nseg=8/6)

using 360-opening angle/nseg for 20 mrad

