

# FONT Meeting

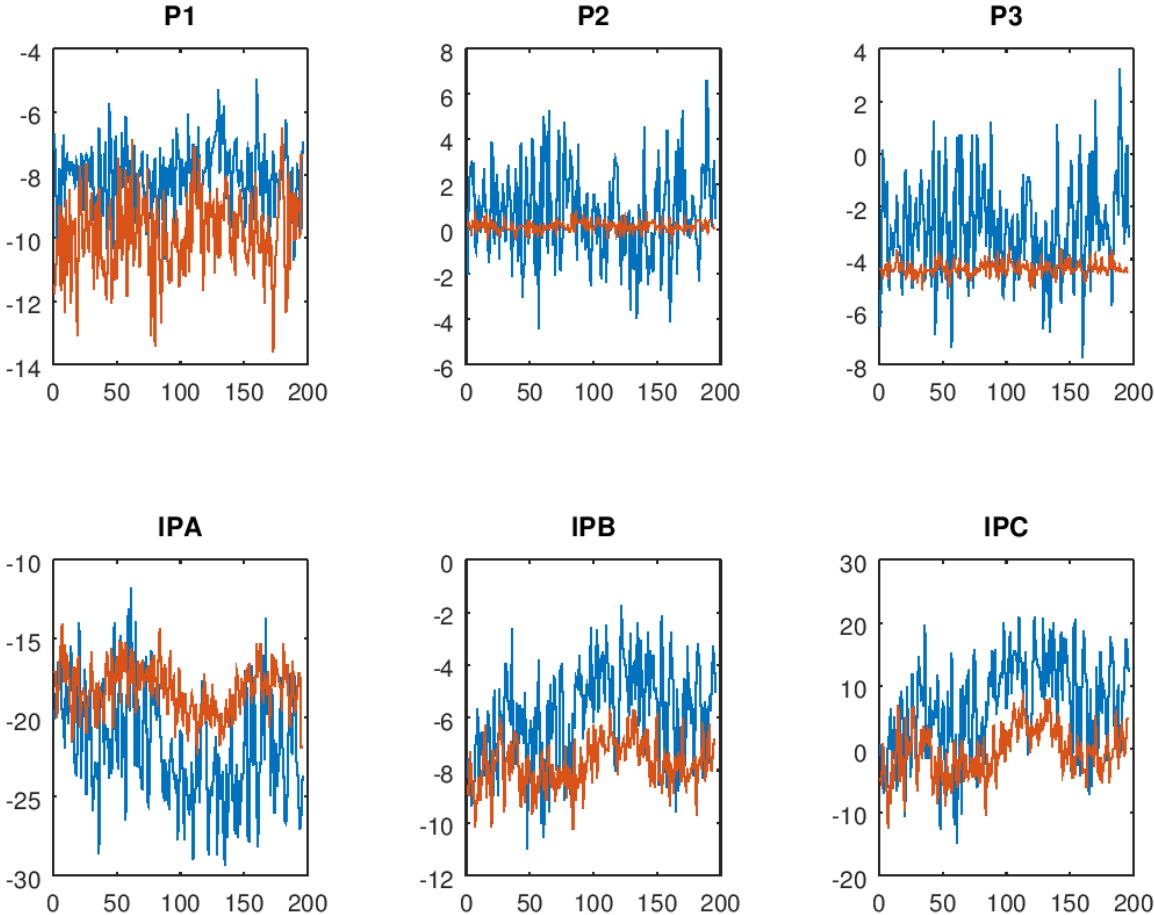
*Friday 23<sup>rd</sup> November 2018*

## **Upstream feedback performance**

Douglas BETT

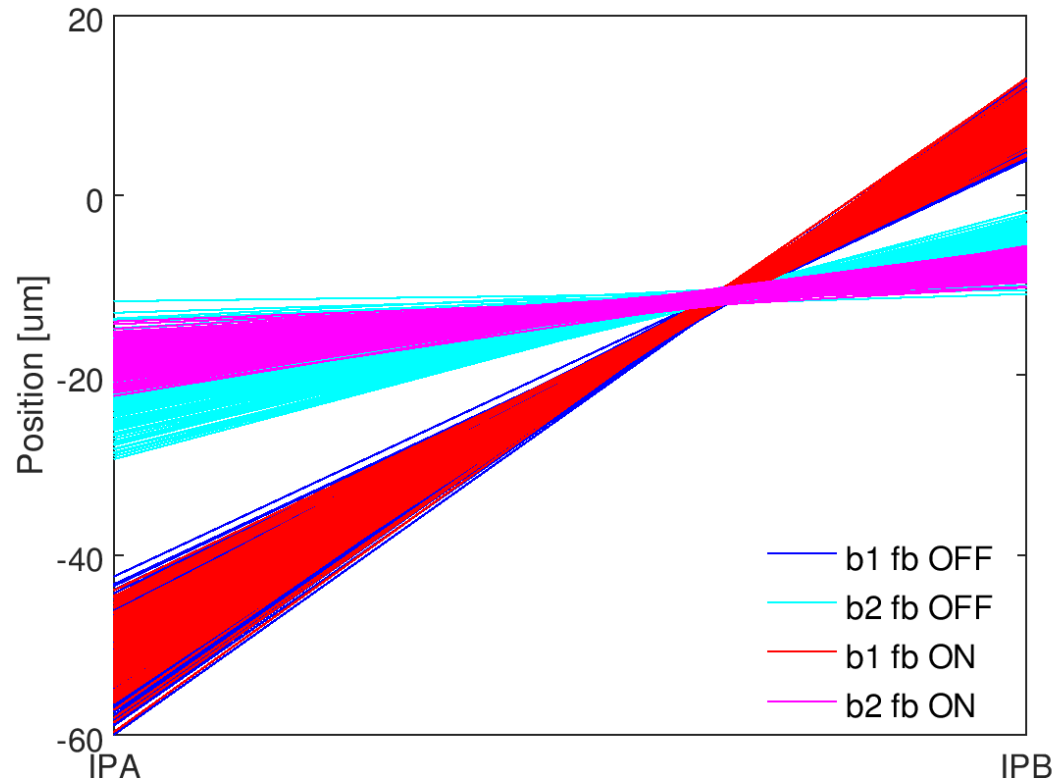
# fbRun15 - 071118

Only interleaved run with IP data  
Nominal optics



	$\sigma_2$ (OFF)	$\sigma_2$ (ON)	Reduction factor
P1	1.075	1.324	0.81
P2	2.026	0.214	9.49
P3	1.918	0.247	7.76
IPA	3.672	1.645	2.23
IPB	1.901	0.931	2.04
IPC	7.818	4.029	1.94

# IP trajectory

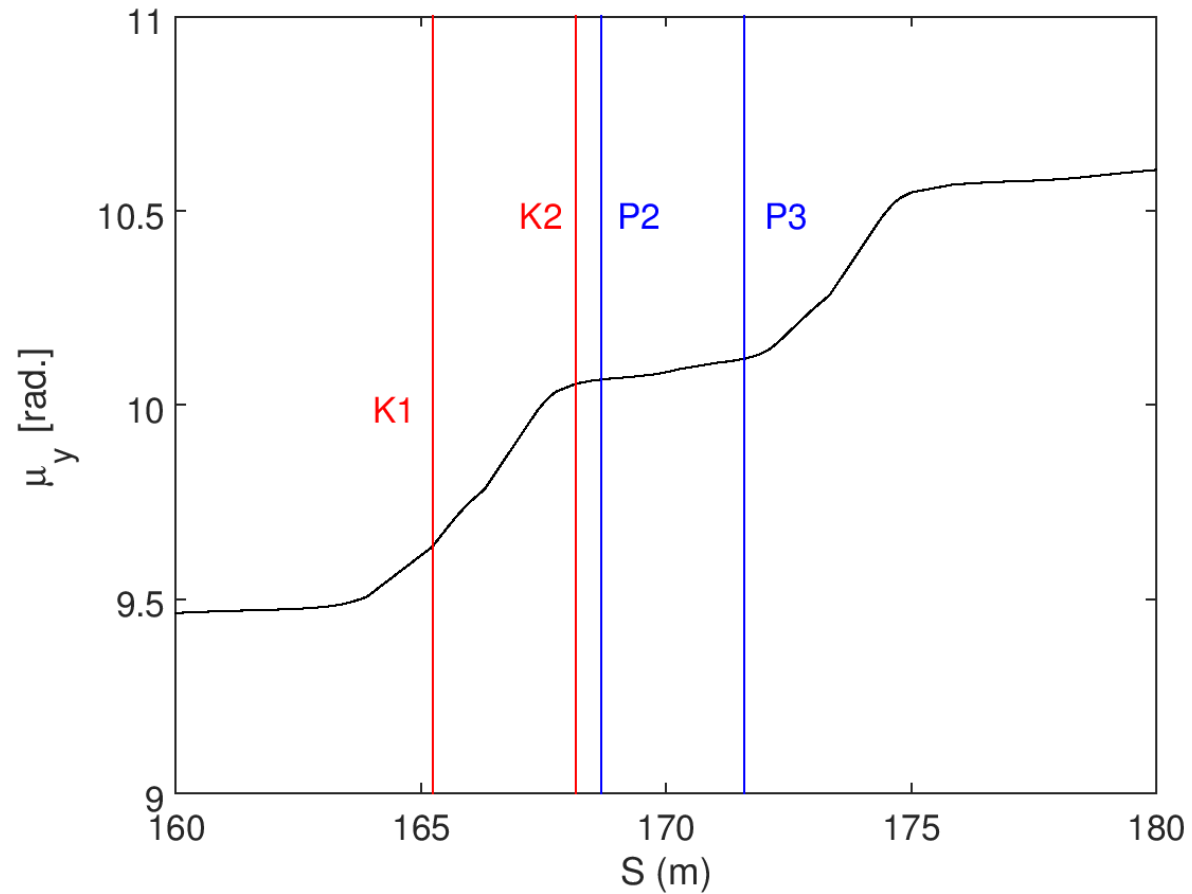


FB OFF: 235.8  $\mu$ rad

FB ON: 86.8  $\mu$ rad

Reduction factor = 2.72

# ATF model



Based on setfile  
set18nov07\_1454.dat

Caveat: used arbitrary tunes for DR

Phase advance between kickers =  $24^\circ$   
Phase advance between BPMs =  $3^\circ$