

Victor
Lohezic

First results

Polar angle
distribution of t

Polar angle
distribution of b

Lepton only
analysis

ILC analysis

$$e^+e^- \rightarrow t\bar{t}$$

Right handed polarisation

Victor Lohezic, Yuichi Okugawa, Ryo Yonamine,
Adrian Irles, Roman Poeschl, Hitoshi Yamamoto

ILC analysis group, Tohoku University, Sendai (Japan)

June 19, 2019

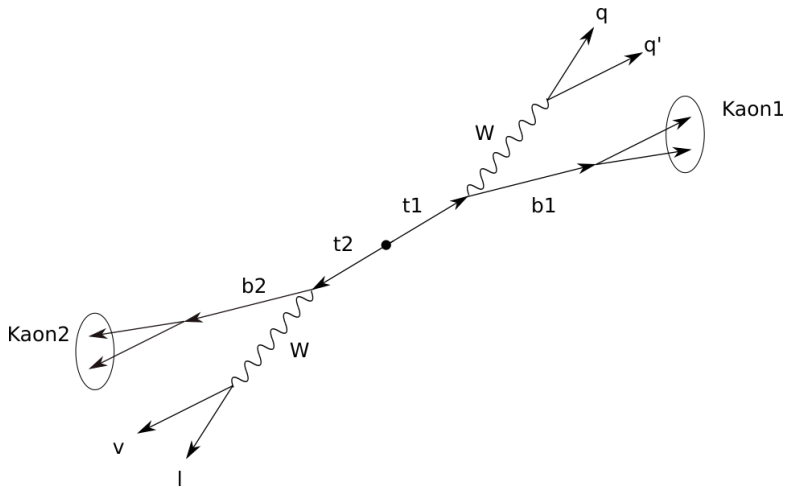


Figure 1 – A nice kinematic diagram of the decay process by Yuichi

First results

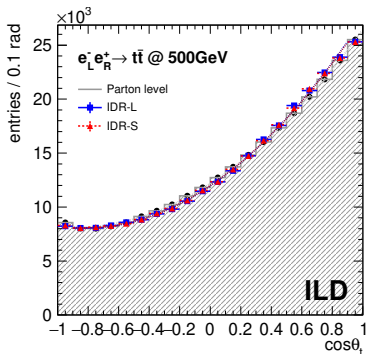
Polar angle distribution of t 

Figure 2 – Left handed (Yuichi)

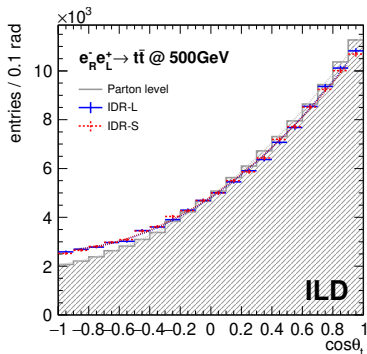


Figure 3 – Right handed (Victor)

	LARGE Detector	SMALL Detector
Final efficiency	30.609%	30.453%

	LARGE Detector	SMALL Detector
Final efficiency	29.2896%	29.1365%

First results

Polar angle distribution of b

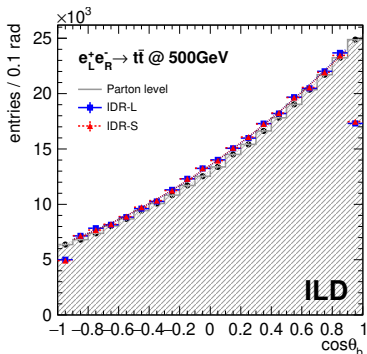


Figure 4 – Left handed (Yuichi)

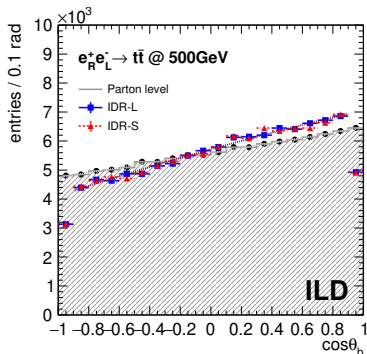


Figure 5 – Right handed (Victor)

	LARGE Detector	SMALL Detector
Final efficiency	30.609%	30.453%

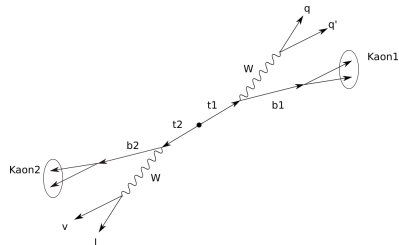
	LARGE Detector	SMALL Detector
Final efficiency	29.290%	29.137%

First results

Polar angle
distribution of tPolar angle
distribution of bLepton only
analysis

Methods used :

- ① vertex1Xvertex2
- ② kaon1Xkaon2
- ③ vertex1Xkaon1 &
vertex2Xkaon2
- ④ vertex1Xkaon2 &
vertex2Xkaon1
- ⑤ leptonXvertex1 &
leptonXvertex2
- ⑥ leptonXkaon1 &
leptonXkaon2
- ⑦ chi2 + lepton



First results

Polar angle
distribution of tPolar angle
distribution of bLepton only
analysis

Lepton only analysis

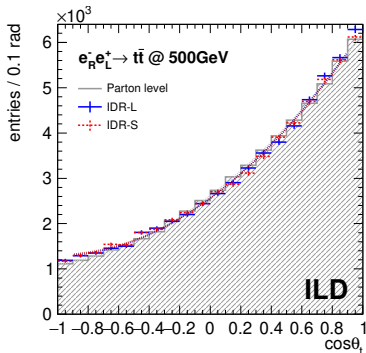


Figure 6 – Distribution of t

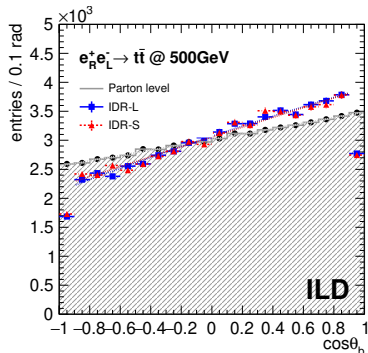


Figure 7 – Distribution of b

	LARGE Detector	SMALL Detector
Final efficiency	15.782%	16.151%