



Welcome, Introduction, Logistics with cherry blossoms

Yasuchika Yamamoto (KEK)

Megurogawa river @Tokyo

Introduction

- I'm very happy to have this review meeting at KEK during the cherry blossom season in Japan.
- The crab cavity team has discussed the crab cavity design for ILC since Nov/2020 (kick-off meeting held).
- After the kick-off, Peter has organized many meetings/discussions related to crab cavity.
- Before his presentation, I will explain some logistics.

COVID-19 protocols at KEK

- **Wearing a mask on campus**

- **Indoor : Required (in principle)**

- **Outdoor : Not required (in principle)**

- **Wearing a mask is required when talking to people whose distance is within 2 meters.**



- **Meeting / Event**

- **Ensuring sufficient space(Half of the venue capacity, provide adequate ventilation)**

- [Reference] **The ventilation capacity and venue capacity of the main conference rooms**

- **Required distance between participants**

- **Leave 1 seat (or more than 1m) on the front, back, left and right.**

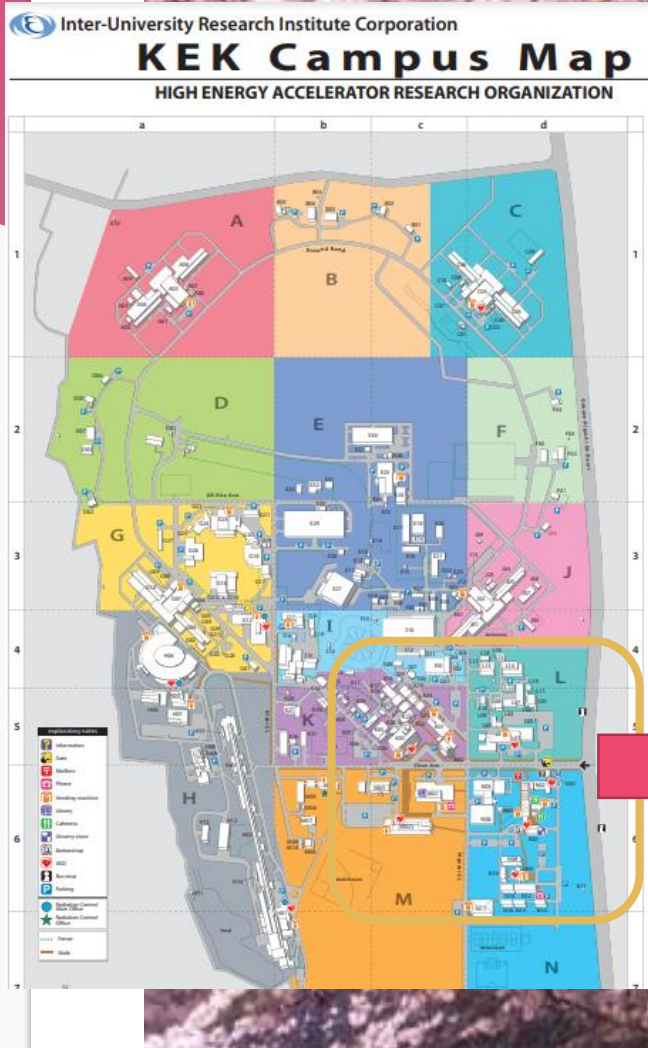
- **Eating and drinking on campus**

- **No alcohol provided : Buffet style is permitted Alcohol provided : Sit-down style only However, events hosted by KEK which held outside of campus must comply with the above too. In either case, avoid crowds, do not speak loudly and wear a mask when you have a conversation.**

- **Eduroam**
 - If you have an account, you can login
- **KEK Guest Network**
 - You need to access to **INDICO**, and will find the manual



Campus map of KEK



Venue: "Large Conf. Room" 1F, Building 2

Cafeteria
Cafe
Grocery Store

KEK Dorm

| explanatory notes | |
|-------------------|-----------------|
| | Information |
| | Gate |
| | Mailbox |
| | Phone |
| | Vending machine |
| | Library |
| | Cafeteria |
| | Grocery store |
| | Barbershop |
| | AED |
| | Bus stop |
| | Parking |

Lunch & Coffee

- **Lunch**

- **KEK can provide lunch box for every attendee every day**
- **You can use the restaurant, cafeteria, and grocery**

- **Coffee**

- **Coffee and confectionary are always available in the meeting room**
- **If it's not enough, please ask the administration office**

Food details inside KEK

<Cafeteria> 【open only on weekdays】

○Lunch 11:30 to 13:30 (weekdays)

○Dinner 17:30 to 18:30

(Tue, Wed, and Thu only. Closed on Mon and Fri)

(-> closest outside restaurant is approx. 2km (approx. 20 min walk))

<Cafe> 【open only on weekdays】

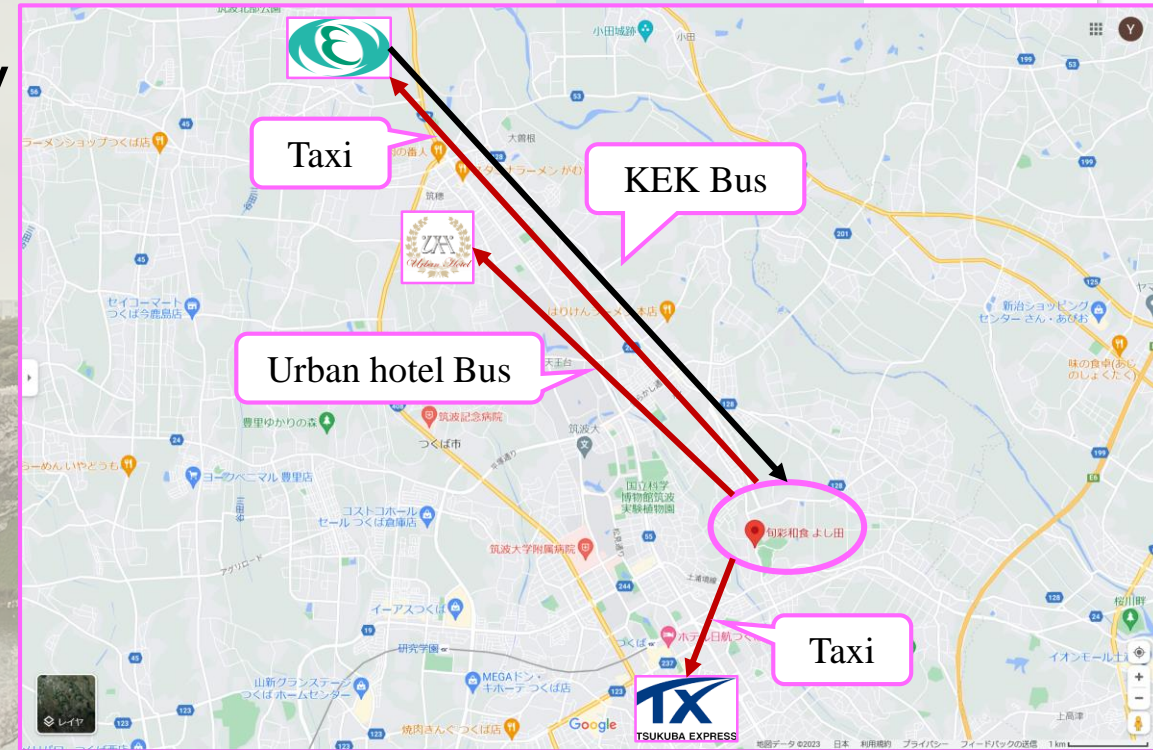
○Lunch 11:30 to 14:00

<Grocery Store> 【open only on weekdays】

○8:30 to 18:00

Special dinner @5/Apr (Wed)

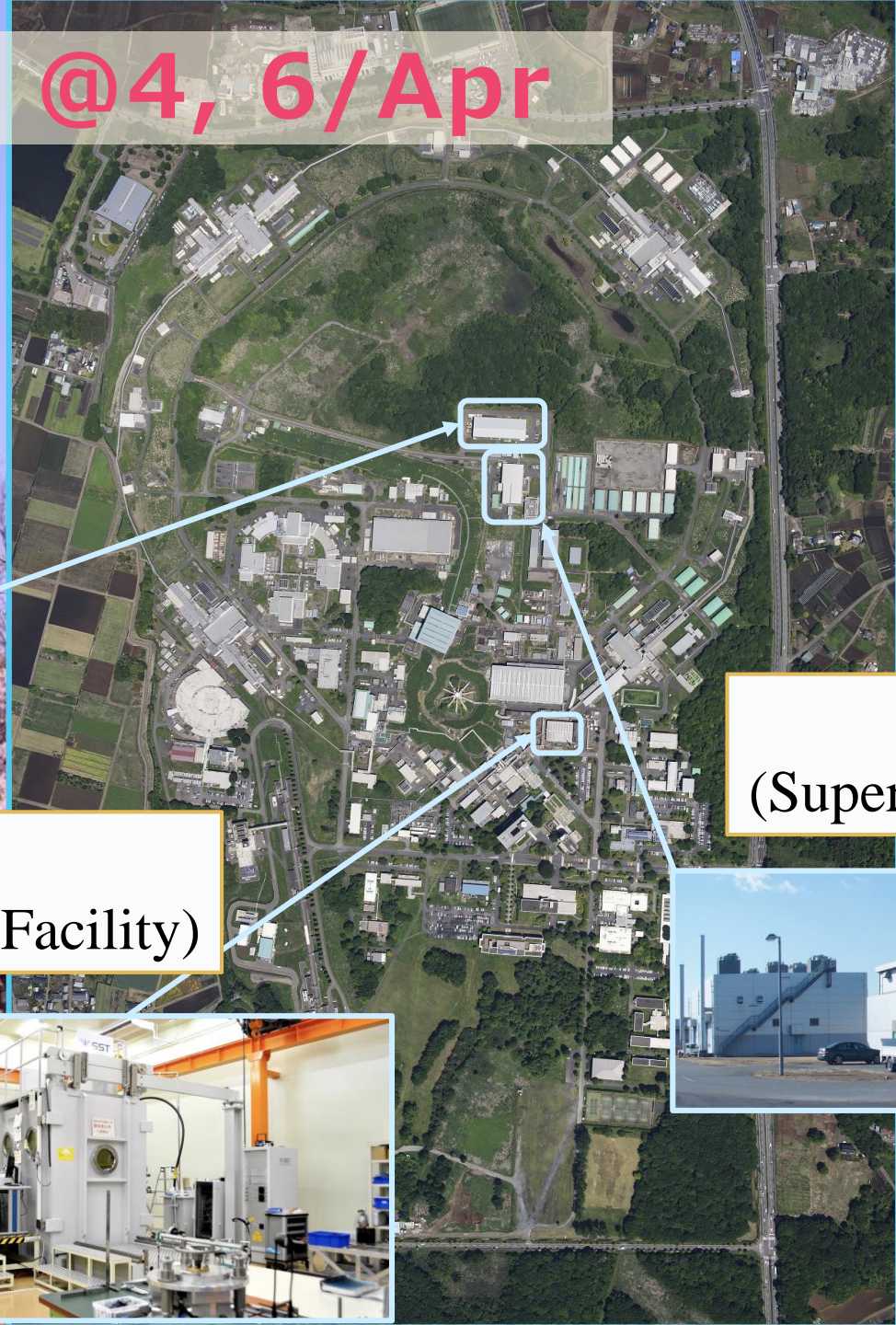
- 5/Apr (Wed) 18:00~20:00
- Shunsai Washoku Yoshida (Japanese style restaurant)
- <http://www.syunsaiwasyoku-yoshida.com/>
- Transport
 - Outward trip: KEK Bus
 - Return to hotel:
 - Tsukuba center by taxi
 - Urban hotel by bus
 - KEK dormitory by taxi



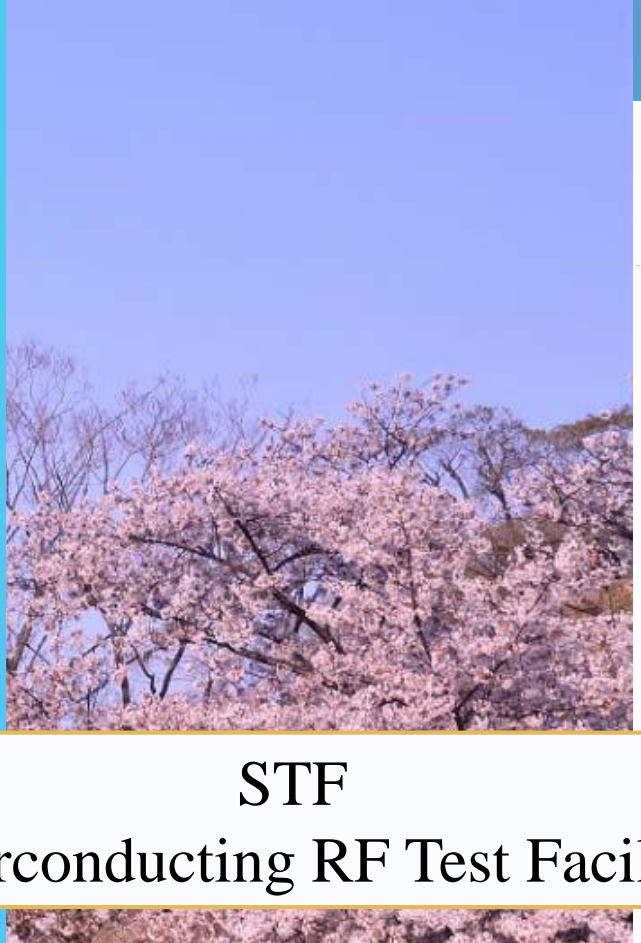
Chidorigafuchi, Imperial Palace @Tokyo

Facility tour @4, 6/Apr

COI
(Center of Innovation)



STF
(Superconducting RF Test Facility)



CFF
(Cavity Fabrication Facility)



Osaka-jou castle @Osaka



Thank you very much!

Only cherry blossom slides



Megurogawa river @Tokyo



Ueno Kouen park @Tokyo





Hirosaki Kouen park @Aomori



Sumidagawa river & Tokyo Sky Tree @Tokyo



Sengen-jinja shrine & Mt. Fuji @Yamanashi



Chidorigafuchi, Imperial Palace @Tokyo



Osaka-jou castle @Osaka